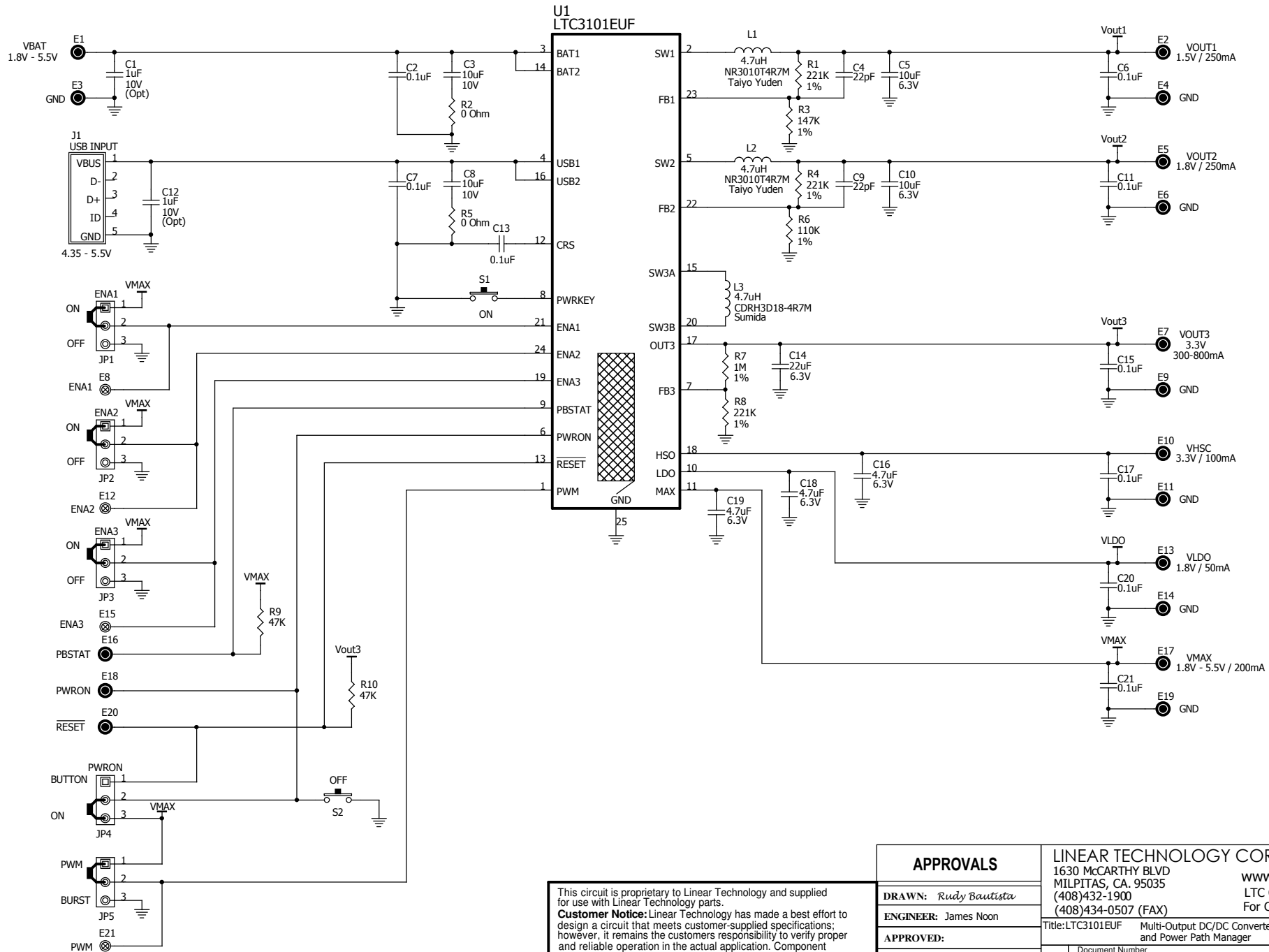


REVISION HISTORY				
ECO	REV	DESCRIPTION	DATE	APPROVED
	0	1st PROTOTYPE		
	1	2nd PROTOTYPE	10/08	



This circuit is proprietary to Linear Technology and supplied for use with Linear Technology parts.
Customer Notice: Linear Technology has made a best effort to design a circuit that meets customer-supplied specifications; however, it remains the customers responsibility to verify proper and reliable operation in the actual application. Component substitution and printed circuit board layout may significantly affect circuit performance or reliability. Contact Linear Applications Engineering for assistance.

APPROVALS		LINEAR TECHNOLOGY CORPORATION	
DRAWN: Rudy Bautista		1630 MCCARTHY BLVD MILPITAS, CA. 95035 (408)432-1900 (408)434-0507 (FAX)	
ENGINEER: James Noon		www.linear.com LTC Confidential - For Customer Use Only	
APPROVED:		Title: LTC3101EUF Multi-Output DC/DC Converter and Power Path Manager	
CHECKED:		SD Document Number Demo Circuit 1443A	
Date: Monday, March 09, 2009		C:\ORCAD\WINCAPTURE\1443A\1443A_REV1.DSN	
		Sheet 1 of 1	