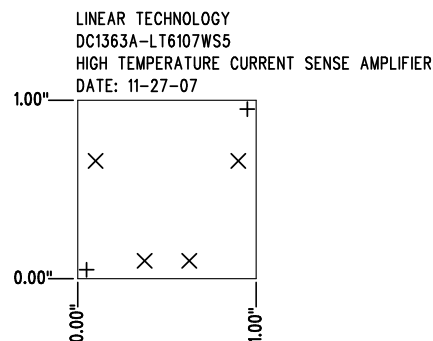


REVISIONS			
REV	DESCRIPTION	APPR	DATE
A	1ST PROTOTYPE	JON M.	12-11-07

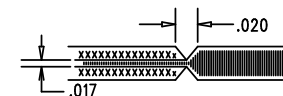
SIZE	QTY	SYM	PLATED	TOL
0.07	2	+	NO	+/-0.003"
0.063	4	X	YES	+/-0.003"




SHOWN FROM COMPONENT SIDE

# NOTES: UNLESS OTHERWISE SPECIFIED

- FAB PER IPC-A-600
- MATERIAL: EPOXY FIBERGLASS, NEMA GRADE FR-406 FOR 150C OPERATION.  
FINISHED THICKNESS TO BE 0.062" +/- .005"  
TOTAL OF 2 LAYERS WITH 2 OZ. CU ON EACH LAYER.  
FLAMMABILITY RATING: 94 V-0 MINIMUM .
- SIZE: CUT TO DIMENSIONS AND TOLERANCES SHOWN.  
0.00" ARE PRIMARY DATUMS.
- DRILLING: DRILL HOLES PER SCHEDULE. PLATE THROUGH HOLES WITH COPPER, 0.001" THICK MIN.  
ALL HOLE SIZES ARE SPECIFIED AFTER PLATING.  
HOLE LOCATION TOLERANCES ARE +/-0.003" IN RELATION TO CENTER
- FINISH: SMOBC USING LPI BOTH SIDES, COLOR GREEN.  
GOLD IMMERSION.  
SILKSCREEN BOTH SIDES: USE WHITE NON-CONDUCTIVE INK.
- DO NOT ALTER ARTWORK e.g. TO ADD LOGO OR DATE CODE.  
PAD SIZE CAN BE MODIFIED TO MEET END FINISH.
- PCBS ARE TO BE RoHS COMPLIANT.
- SCORING FOR PANELIZED PCB:



APPROVALS			 <div> 1630 MCCARTHY BLVD  MILPITAS, CA 95035  PH: (408)432-1900  LTC CONFIDENTIAL-  FOR CUSTOMER USE ONLY </div>	
	INIT	DATE		
DRAWN			<b>TITLE: FABRICATION DRAWING</b> <b>HIGH TEMPERATURE CURRENT SENSE AMPLIFIER</b>  SIZE <b>A</b> DEMO <b>DC1363A-LT6107WS5</b> REV. <b>A</b>	
CHECK				
DESIGN	KIM T.	12-11-07		
ENGR	JON M.	12-11-07		
SCALE = NONE			SHT 1 of 1	