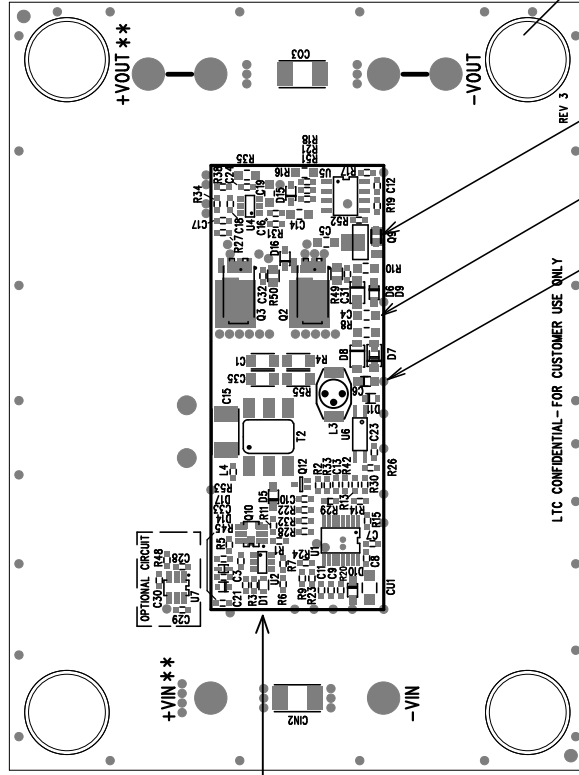


NOTES: UNLESS OTHERWISE SPECIFIED

1. WORKMANSHIP SHALL BE IN ACCORDANCE WITH IPC-A-610.
3. PARTS TO OMIT WILL BE SPECIFIED ON THE BILLS OF MATERIAL. LOCATIONS OF OMITTED PARTS SHALL BE FREE OF SOLDER. MASK THE SOLDER STENCIL WHERE SMT PARTS ARE OMITTED.
4. DEPANELIZE BOARDS AFTER ASSEMBLY AND ROUTE-OUT THE BREAKOUT TABS ON FOUR SIDES OF THE BOARD EDGE.
6. INSTALL 4 RUBBER FEET (BUMFON SJ-5303) AT 4 CORNERS AS SHOWN BELOW:



BOTTOM VIEW

INSTALL 0 OHM RESISTOR HERE FOR Q9 IN "-A, -E".

C4 INSTALLATION FOR "-B"

Q1 INSTALLATION FOR "-E"

C6 INSTALLATION FOR "-B, -C, -D, -G"

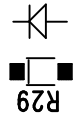
D1 INSTALLATION: FOR "-C, -B",



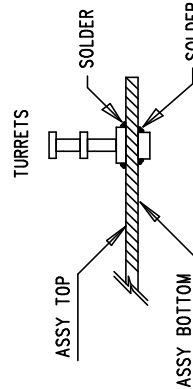
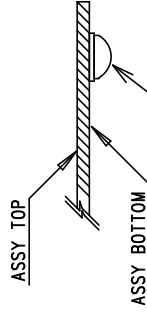
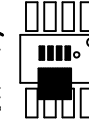
Q13 INSTALLATION

FOR -A, -B, -C, -D, -E

R29 INSTALLATION FOR -B, -C, -D, -F, -G, -H



FOR -F, -G



ASSY DRAWING (BOTTOM VIEW)

APPROVALS		LINEAR TECHNOLOGY		1630 McCarthy Blvd. Milpitas, CA 95035 PH: (408)432-1900	
DRAWN	INIT	DATE		TITLE	LT1952EGN-1, LT4430ES6
CHECK				ISOLATED FORWARD DC/DC CONVERTER	
ENGR	J. WU	9/20/07		SIZE	A
	G. PERICA	9/20/07		DEMO CIRCUIT	DC1317A
				REV.	A
SCALE = NONE				SHT 1 of 1	