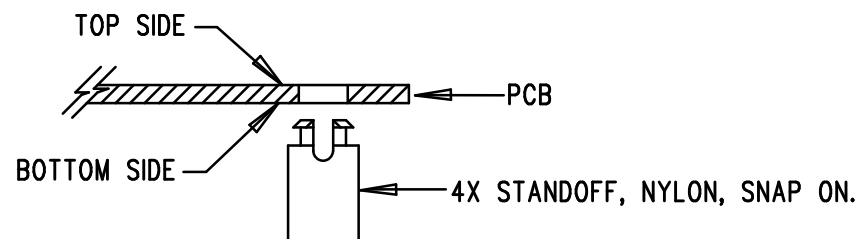


REVISIONS			
REV	DESCRIPTION	APPR	DATE
A-1	FINAL FABRICATION	MIKE S.	11-14-08

NOTES: UNLESS OTHERWISE SPECIFIED

1. WORKMANSHIP SHALL BE IN ACCORDANCE WITH IPC-A-610.
2. INSTALL SHUNT ON JP1-JP2 PINS 1 AND 2.
3. DEPANELIZE BOARDS AFTER ASSEMBLY AND ROUTE-OUT THE BREAKOUT TABS ON FOUR SIDES OF THE BOARD EDGE.
4. ASSEMBLY PROCESS SHALL INCLUDE: REFLOW SOLDER TOP SIDE SMD.
5. INSTALL 4 STANDOFFS AT 4 CORNERS AS SHOWN BELOW:



APPROVALS

	INIT	DATE
DRAWN		
CHECK		
DESIGN	KIM T.	11-14-08
ENGR	MIKE S.	11-14-08

SCALE = NONE



1630 MCCARTHY BLVD
MILPITAS, CA 95035
PH: (408)432-1900
LTC CONFIDENTIAL-
FOR CUSTOMER USE ONLY

TITLE: TOP ASSEMBLY DRAWING
NO RSENSE™ STEP-DOWN DC-DC CONVERTER

SIZE	DEMO	REV.
A	DC1292A-1 * LTC3878EGN	A-1

SHT 1 of 2