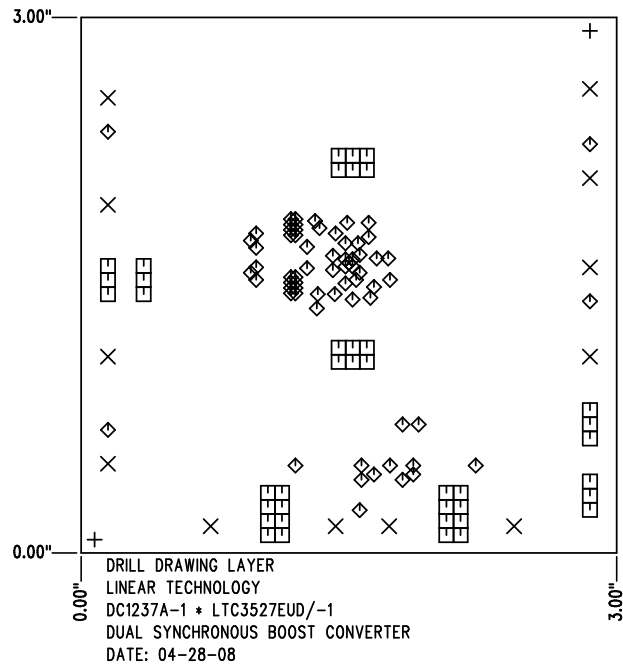


REVISIONS			
REV	DESCRIPTION	APPR	DATE
A-1	FINAL FABRICATION	FH	04-28-08

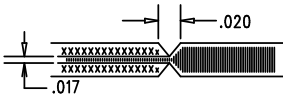



SHOWN FROM COMPONENT SIDE

SIZE	QTY	SYM	PLATED	TOL
0.07	2	+	NO	+/-0.003"
0.094	12	×	YES	+/-0.003"
0.035	40	□	YES	+/-0.003"
0.012	68	◇	YES	+/-0.003"

NOTES: UNLESS OTHERWISE SPECIFIED

1. FAB PER IPC-A-600
2. MATERIAL: EPOXY FIBERGLASS, NEMA GRADE FR-4
 FINISHED THICKNESS TO BE 0.062" +/- .005"
 TOTAL OF 4 LAYERS WITH 2 OZ. CU ON THE
 OUTER LAYERS AND 1 OZ. CU ON THE INNER LAYERS.
 FLAMMABILITY RATING: 94 V-0 MINIMUM .
3. SIZE: CUT TO DIMENSIONS AND TOLERANCES SHOWN.
 0.00" ARE PRIMARY DATUMS.
4. DRILLING: DRILL HOLES PER SCHEDULE. PLATE THROUGH
 HOLES WITH COPPER, 0.001" THICK MIN.
 ALL HOLE SIZES ARE SPECIFIED AFTER PLATING.
 HOLE LOCATION TOLERANCES ARE +/-0.003"
 IN RELATION TO CENTER
5. FINISH: SMOBC USING LPI BOTH SIDES, COLOR GREEN.
 GOLD IMMERSION. (USE LEAD FREE SOLDER FOR PROTOTYPE)
 FOR SILKSCREEN: USE WHITE NON-CONDUCTIVE INK.
6. DO NOT ALTER ARTWORK e.g. TO ADD LOGO OR DATE CODE.
 PAD SIZE CAN BE MODIFIED TO MEET END FINISH.
7. PCBs ARE TO BE RoHS COMPLIANT.
8. SCORING FOR PANELIZED PCB:



APPROVALS			 <div> 1630 MCCARTHY BLVD MILPITAS, CA 95035 PH: (408)432-1900 LTC CONFIDENTIAL- FOR CUSTOMER USE ONLY </div>	
	INIT	DATE		
DRAWN			TITLE: FABRICATION DRAWING DUAL SYNCHRONOUS BOOST CONVERTER SIZE A DEMO DC1237A-1 LTC3527EUD/EUD-1 REV. A-1	
CHECK				
DESIGN	KIM T.	04-28-08		
ENGR	FRAN H.	04-28-08		
SCALE = NONE			SHT 1 of 1	