

DESCRIPTION

Demonstration circuits 1086/7A are dual synchronous, configurable, high switching frequency buck regulators featuring the LTC3546EUFD. The two different demonstration circuits show the current partitioning capability of the LTC3546EUFD to create either two 2A outputs (DC1086A) or one 3A and one 1A output (DC1087A), just by changing a single pin connection.

The main features of the board are separate RUN, soft start and PGOOD pins for each output and a Mode selector that allow the converter to run in CCM, DCM or Burst Mode operation. Synchronization to an external clock is also possible through some minor component changes. Both boards have an input voltage range of 2.5V to 5.5V. In Burst Mode operation, the DC supply current is typi-

cally only 240 μ A at no load, and less than 1 μ A in shut-down. The entire circuit, including the output capacitors, fit within a 0.95" X 0.6" area on the top layer and is only 1.2mm high. The package style for the LTC3546EUFD is a 4mm x 5mm plastic QFN.

The LTC3546EUFD datasheet gives a complete description of the part, operation and application information and must be read in conjunction with this quick start guide for demo circuits 1086/7A.

Design files for this circuit board are available. Call the LTC factory.

Burst Mode is a trademark of Linear Technology Corporation

Table 1. Performance Summary ($T_A = 25^\circ\text{C}$)

PARAMETER	CONDITION	DC1086A		DC1087A	
		Vout1	Vout2	Vout1	Vout2
Input Voltage Range		2.5V – 5.5V			
Maximum Output Current	$V_{IN} = 2.5\text{V to } 5.5\text{V}$	2A	2A	1A	3A
Output Voltage	$V_{IN} = 2.8\text{V to } 5.5\text{V}$, $I_{OUT} = 0\text{A to max. load}$	$2.5\text{V} \pm 2\%$	$1.8\text{V} \pm 2\%$	$2.5\text{V} \pm 2\%$	$1.2\text{V} \pm 2\%$
Nominal Switching Frequency	$R_T = 143\text{k}\Omega$	1500kHz			
Typical Efficiency	$V_{IN} = 5\text{V}$, $I_{OUT} = \text{Full load}$	87%	83%*	87%*	77%*
	$V_{IN} = 3.3\text{V}$, $I_{OUT} = \text{Full load}$	86%**		87%*	
See Figures 3 – 6	$V_{IN} = 2.5\text{V}$, $I_{OUT} = \text{Full load}$		79%*		74%*

*Up to 2% higher efficiency is possible with alternative higher profile inductors – see Table 2

OPERATING PRINCIPLES

A unique feature of the LTC3546EUFD is the flexible current partitioning. The LTC3546EUFD has two independently regulated outputs that can deliver up to 2A and 1A due to the 90m Ω and 180m Ω internal power MOSFET switches. An additional 1A output, with 180m Ω internal power MOSFET switches, can be paralleled to either of

the outputs to produce either a 3A/1A or a 2A/2A dual output regulator. This external connection is internally detected and the dependent output is automatically gated in accordance to the connected output — nothing more is required.

QUICK START PROCEDURE

QUICK START GUIDE FOR DEMONSTRATION CIRCUITS 1086/7A

DUAL SYNCHRONOUS, CONFIGURABLE, HIGH SWITCHING FREQUENCY BUCK REGULATORS

Demonstration circuits 1086/7A are easy to set up to evaluate the performance of the LTC3546EUFD. Refer to 0 for proper measurement equipment setup and follow the procedure below:

NOTE: When measuring the input or output voltage ripple, care must be taken to avoid a long ground lead on the oscilloscope probe. Measure the input or output voltage ripple by touching the probe tip directly across the input or output ceramic capacitors. See Figure 2 for proper scope probe technique.

1. Place jumpers in the following positions:

JP1	CCM	JP2	SS2
JP3	SS1	JP4	ON
JP5	ON	JP6	180°

2. With power off, connect the input power supply to V_{IN} and GND.

3. Turn on the power at the input.

NOTE: Make sure that the input voltage does not exceed 5.5V.

4. Check for the proper output voltages.

$$V_{OUT1} = 2.450V \text{ to } 2.550V \text{ (Both DC1086/7A)}$$

$$V_{OUT2} = 1.764V \text{ to } 1.836V \text{ (DC1086A)}$$

$$V_{OUT2} = 1.176V \text{ to } 1.224V \text{ (DC1087A)}$$

NOTE: If there is no output, temporarily disconnect the load to make sure that the load is not set too high.

5. Once the proper output voltages are established, adjust the loads within the operating range and observe the output voltage regulation, ripple voltage, efficiency and other parameters.

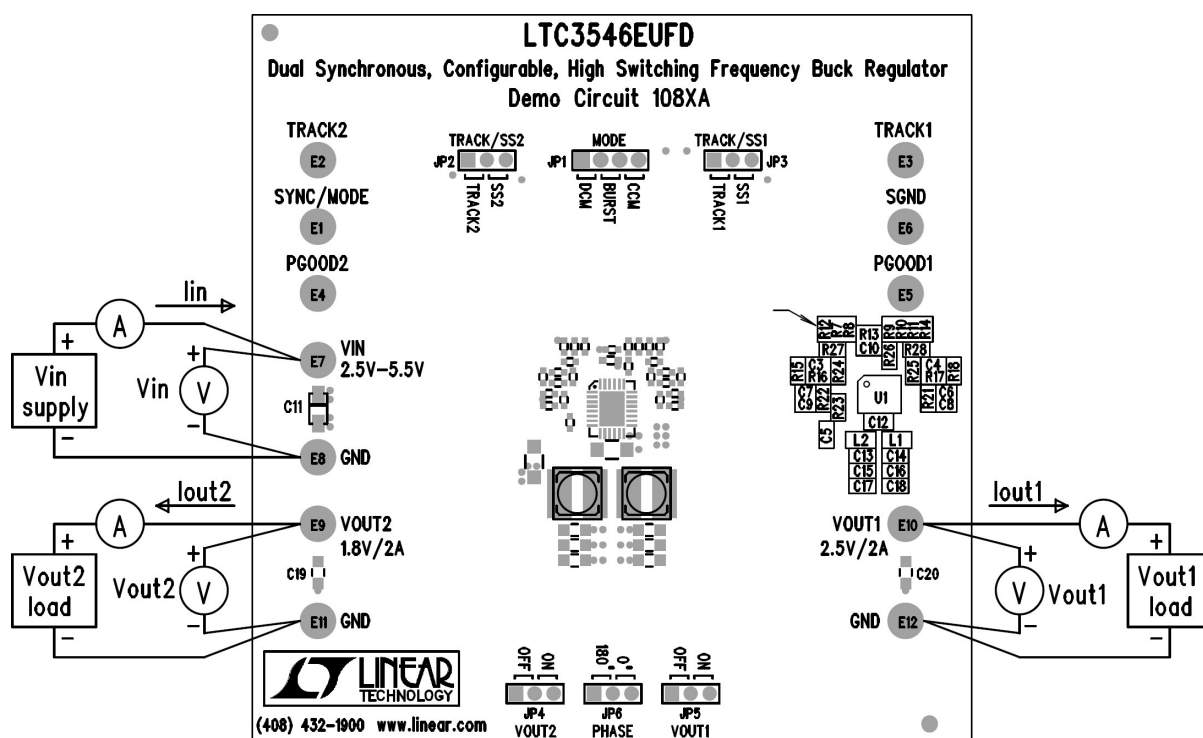


Figure 1. Proper Measurement Equipment Setup

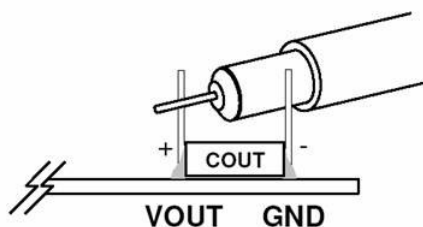


Figure 2. Measuring Input or Output Ripple Directly Across Ceramic Capacitor

OPTIONS

The demonstration circuits 1086/7 are optimized for low profile with a maximum component height of 1.2mm. This height limitation affects the inductor selection and can limit the circuit efficiency. If a higher

efficiency is required and the height limitation can be relaxed, alternative inductors can be selected. In the list of a few alternative components to improve overall efficiency is given in Table 2.

Table 2. Alternative inductor selections for improved efficiency

MANUFACTURER	DC1086A		DC1087A		COMMENTS
	V_{OUT1}	V_{OUT2}	V_{OUT1}	V_{OUT2}	
Würth Elektronik - PD2-MS Series	1.2 μ H	1.2 μ H	0.56 μ H	1.7 μ H	5mm x 6mm x 2mm high
Cooper Bussmann – SDxx Series	SD20 - 1.2 μ H	SD20 - 1.2 μ H	SD25 - 0.47 μ H	SD12 - 1.5 μ H	5.2mm x 5.2mm, height determined by series
Sumida – CDRH4D29LD Series	1.5 μ H	1.5 μ H	0.8 μ H	2.2 μ H	4.9mm x 4.9mm x 3mm high

FREQUENCY SYNCHRONIZATION

Demonstration circuits 1086/7A's Mode selector allows the converter to run in CCM, DCM or Burst Mode operation by changing position of jumper JP1. For synchronizing to an external clock source, however,

some bench modification is needed. Refer to Table 3 and to the data sheet for more details. Please note that the LTC3546EUF will operate in DCM mode when synchronized to an external clock.

Table 3. Free Running and Synchronized Operation Options

CONFIGURATION	FREQ PIN COMPONENTS		MODE SELECTOR
	R13	R26	JP1
Free Running	143k Ω	0 Ω	CCM, DCM or Burst Mode
Synchronized to External Clock	100pF	200k Ω	CCM and clock applied to Sync/Mode pin

QUICK START GUIDE FOR DEMONSTRATION CIRCUITS 1086/7A

DUAL SYNCHRONOUS, CONFIGURABLE, HIGH SWITCHING FREQUENCY BUCK REGULATORS

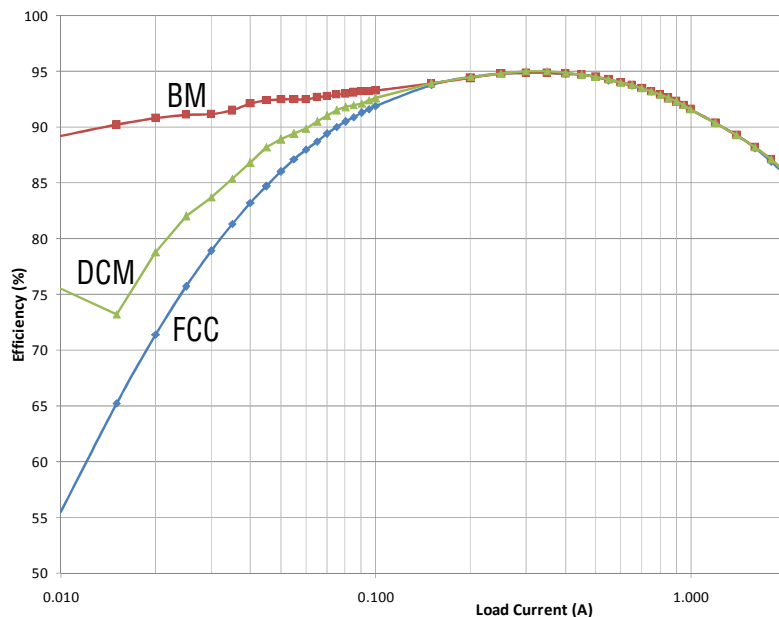


Figure 3. Efficiency vs. load current for different operating modes, DC1086A, $V_{IN} = 3.3V$, $V_{OUT1} = 2.5V$

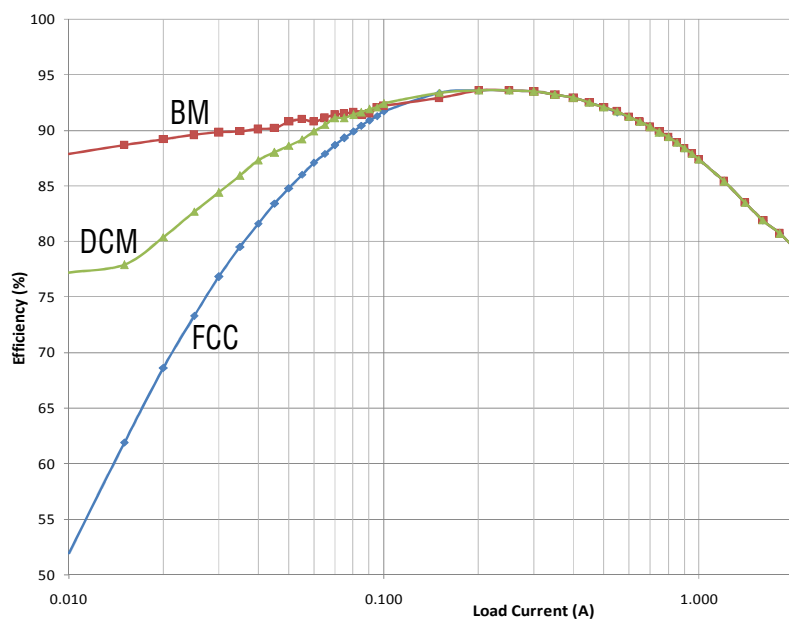


Figure 4. Efficiency vs. load current for different operating modes, DC1086A, $V_{IN} = 2.5V$, $V_{OUT2} = 1.8V$

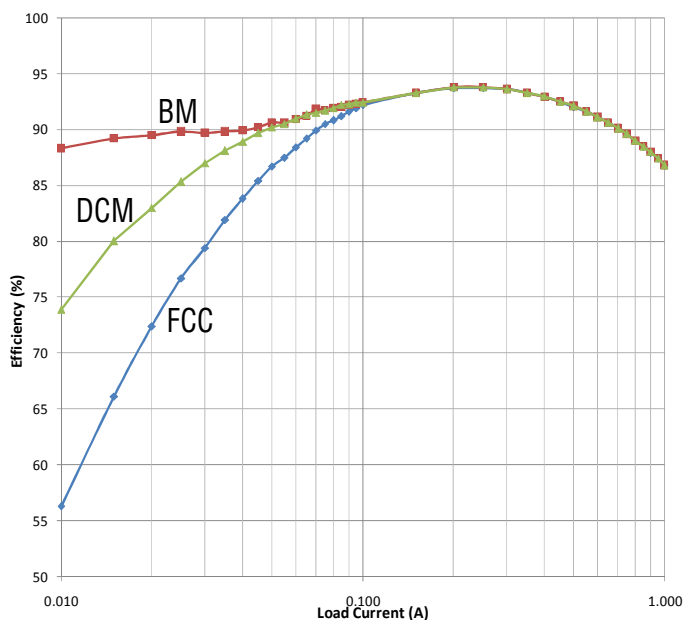


Figure 5. Efficiency vs. load current for different operating modes, DC1087A, $V_{IN} = 3.3V$, $V_{OUT1} = 2.5V$

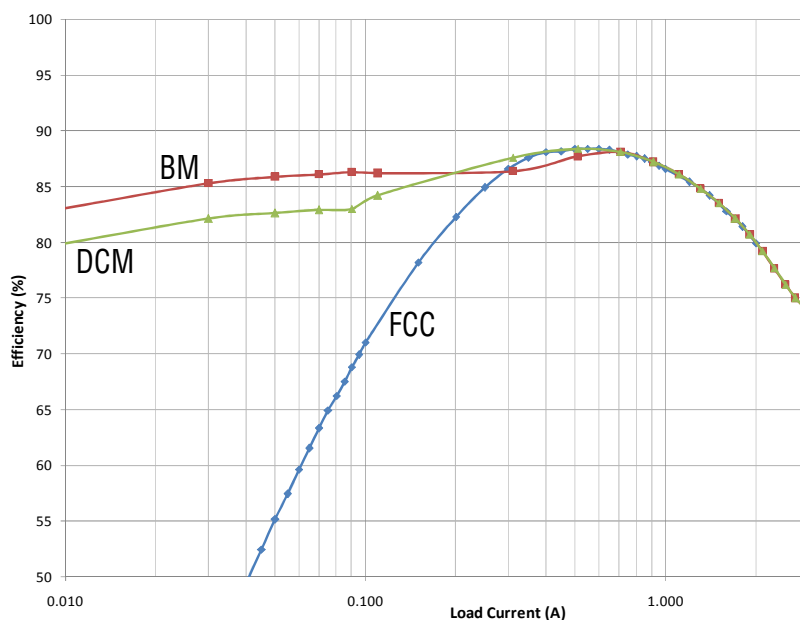


Figure 6. Efficiency vs. load current for different operating modes, DC1087A, $V_{IN} = 2.5V$, $V_{OUT2} = 1.2V$

TRACKING BETWEEN CHANNELS

It is possible to have either of the two output channels act as master to the other channel during startup. In this configuration, the other channel will either ramp coincidental to the master (if it is a lower output voltage), or ramp in a similarly scaled manner. For Dem-

onstration Circuits 1086/7A this is accomplished by tying the output of the Master channel to the Track pin of the opposite channel, and changing the appropriate jumper (JP2 or JP3) to the track position. Please refer to Table 4 and the datasheet for more detail.

QUICK START GUIDE FOR DEMONSTRATION CIRCUITS 1086/7A

DUAL SYNCHRONOUS, CONFIGURABLE, HIGH SWITCHING FREQUENCY BUCK REGULATORS

Table 4. Configuration for Tracking between Channels

TRACKING MODE	CHANNEL CONFIGURATION		JUMPER SELECTION		EXTERNAL CONNECTION
	MASTER	SLAVE	JP2	JP3	
Coincidental	CH1	CH2	TRACK2	SS1	Vout1 connected to TRACK2
Scaled ramp	CH2	CH1	SS2	TRACK1	Vout2 connected to TRACK1

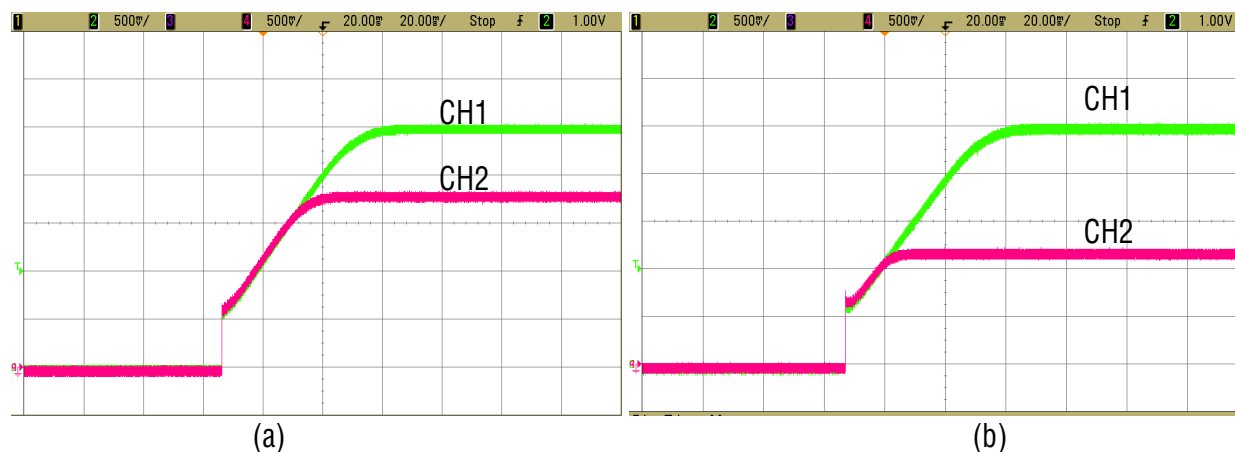


Figure 7. Tracking with CH2 following CH1 for (a) DC1086A and (b) DC1087A respectively

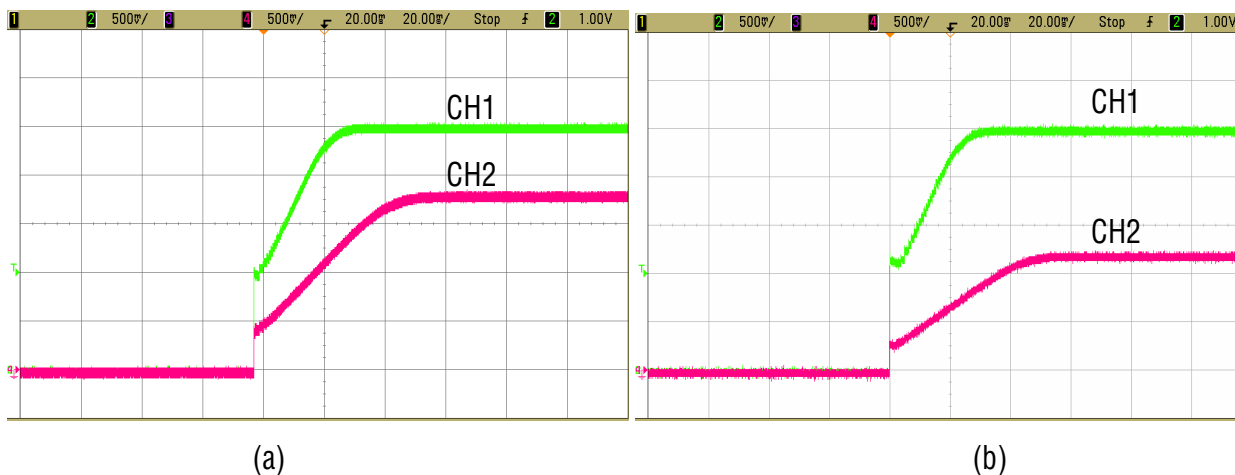
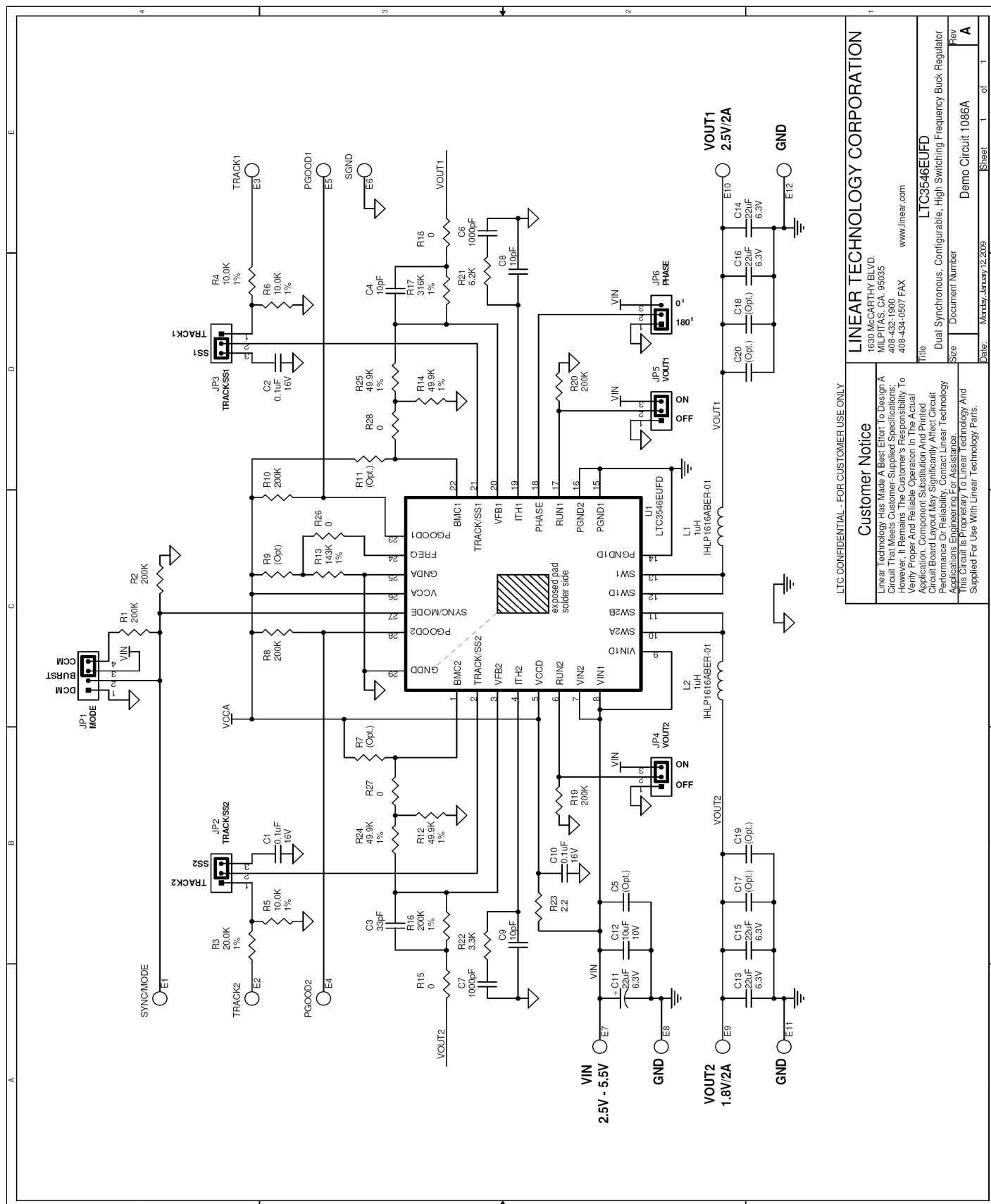


Figure 8. Tracking with CH1 following CH2 for (a) DC1086A and (b) DC1087A respectively

QUICK START GUIDE FOR DEMONSTRATION CIRCUITS 1086/7A

DUAL SYNCHRONOUS, CONFIGURABLE, HIGH SWITCHING FREQUENCY BUCK REGULATORS

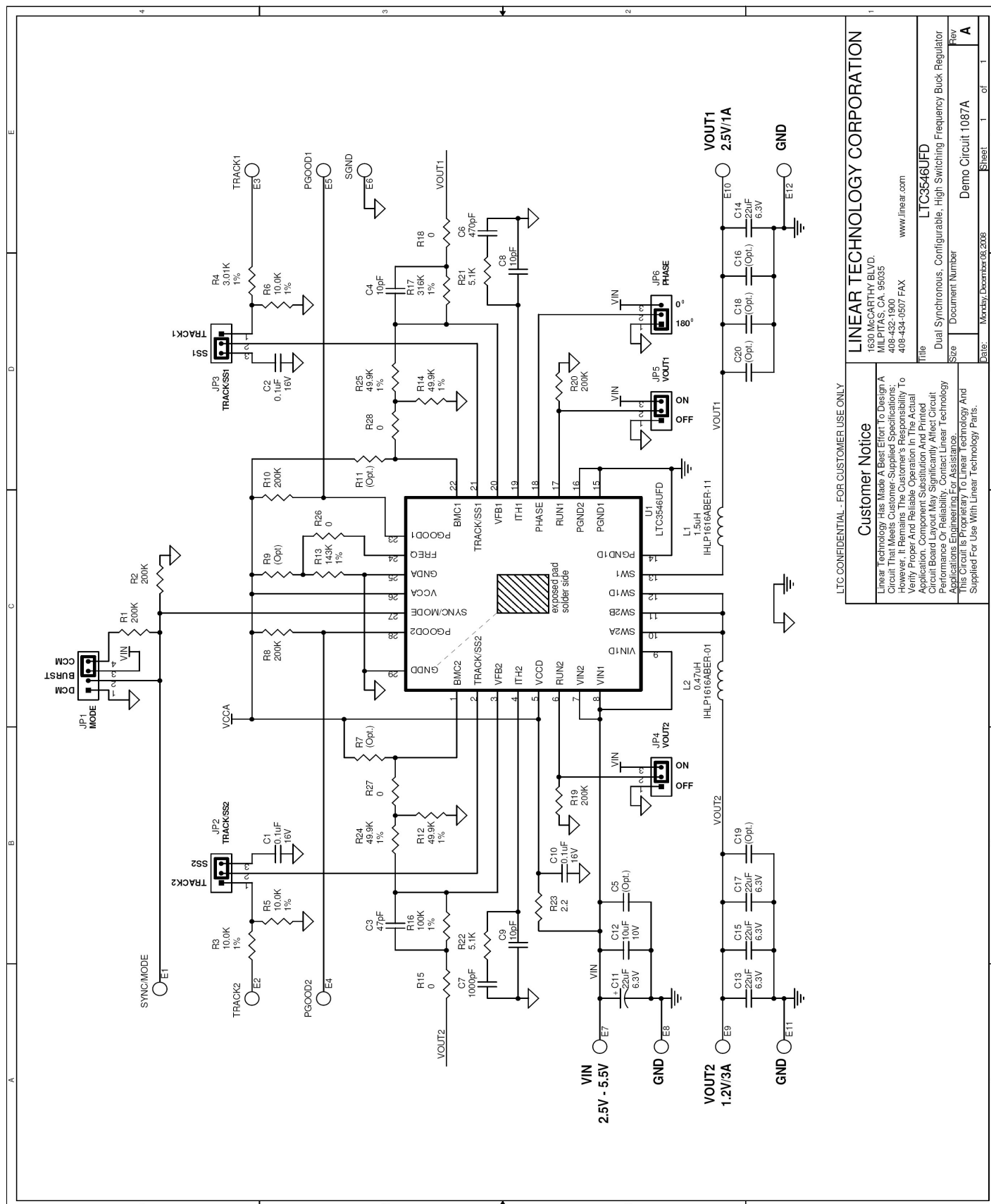


LTC CONFIDENTIAL - FOR CUSTOMER USE ONLY

Customer Notice Linear Technology Has Made A Best Effort To Design A Circuit That Meets Customer-Supplied Specifications; However, It Remains The Customer's Responsibility To Verify Proper And Reliable Operation In The Actual Application. Component Substitution And Printed Circuit Board Layout May Significantly Affect Circuit Performance Or Reliability. Contact Linear Technology Applications Engineering For Assistance. This Circuit Is Provided As A Design Example And Supplied For Use With Linear Technology Parts.	
LINEAR TECHNOLOGY CORPORATION 1630 MCCARTHY BLVD. MILPITAS, CA. 95035 408-432-1900 408-434-0507 FAX www.linear.com	
Title LTC3546EUFD Dual Synchronous, Configurable, High Switching Frequency Buck Regulator	
Size	Document Number
Rev	Demo Circuit 1086A
Date: Monday, January 12, 2009	Sheet 1 of 1

QUICK START GUIDE FOR DEMONSTRATION CIRCUITS 1086/7A

DUAL SYNCHRONOUS, CONFIGURABLE, HIGH SWITCHING FREQUENCY BUCK REGULATORS



LTC CONFIDENTIAL - FOR CUSTOMER USE ONLY

Customer Notice	
Linear Technology Has Made A Best Effort To Design A Circuit That Meets Customer-Supplied Specifications; However, It Remains The Customer's Responsibility To Verify Proper And Reliable Operation In The Actual Application. Component Substitution And Printed Circuit Board Layout May Significantly Affect Circuit Performance Or Reliability. Contact Linear Technology Applications Engineering For Assistance. Linear Technology And The Linear Technology Logo Are Registered Trademarks Of Linear Technology Corporation. All Rights Reserved.	
LTC3546UFD	
Dual Synchronous, Configurable, High Switching Frequency Buck Regulator	
Size	Document Number
Rev	Demo Circuit 1087A
Date	Monday, December 03, 2008
Sheet	1 of 1