

CHECK ONE PER VERSION

☒ FOR DC1040A-A

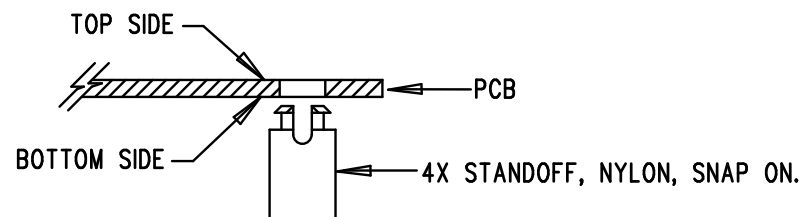
☒ FOR DC1040A-B

NOTES: UNLESS OTHERWISE SPECIFIED

1. WORKMANSHIP SHALL BE IN ACCORDANCE WITH IPC-A-610.
2. INSTALL SHUNT ON JP1-JP4 PINS 1&2.
3. PARTS TO OMIT WILL BE SPECIFIED ON THE BILL OF MATERIALS. LOCATIONS OF OMITTED PARTS SHALL BE FREE OF SOLDER. MASK THE SOLDER STENCIL WHERE SMT PARTS ARE OMITTED.
4. DEPANELIZE BOARDS AFTER ASSEMBLY AND ROUTE-OUT THE BREAKOUT TABS ON FOUR SIDES OF THE BOARD EDGE.
5. ASSY PROCESSES SHALL INCLUDE: REFLOW SOLDER TOP SIDE SMD.
6. MARKED LTC DEMO CIRCUIT ASSY DASH LETTER (SEE TABLE) WITH BLACK PERMANENT MARKER, APPROX. WHERE SHOWN. (SEE BELOW EXAMPLE).

EXAMPLE: DC1040A-A MARKED

7. INSTALL 4 STANDOFFS AT 4 CORNERS AS SHOWN BELOW:



FOR ASSEMBLY

VERSIONS	U1
-A	LTC3544EUD
-B	LTC3544BEUD

APPROVALS

	INIT	DATE
DRAWN		
CHECK		
DESIGN	KIM T.	01-29-07
ENGR	VICTOR K.	01-29-07

SCALE = NONE



LINEAR
TECHNOLOGY

1630 MCCARTHY BLVD
MILPITAS, CA 95035
PH: (408)432-1900
LTC CONFIDENTIAL-
FOR CUSTOMER USE ONLY

TITLE: TOP ASSEMBLY DRAWING

QUAD DC/DC CONVERTER

SIZE A DEMO DC1040A-2
LTC3544EUD/BEUD

REV. A-2

SHT 1 of 2

REVISIONS

REV	DESCRIPTION	APPR	DATE
A-2	FINAL FABRICATION	VK	01-29-07