



AHEAD OF WHAT'S POSSIBLE™

# HIGH DOSE RADIATION TEST REPORT PM111S

*October 1994*

Generic



## Radiation Test Report

Product:	PM111S
Gamma:	0,10k, 20k, 30k,40k, 50k, 24Hr
Gamma Source:	Co60/TM1019 Condition A
Dose Rate:	2.78 Rad/s
Facilities:	LSI Logic
Tested:	October 18th, 1994

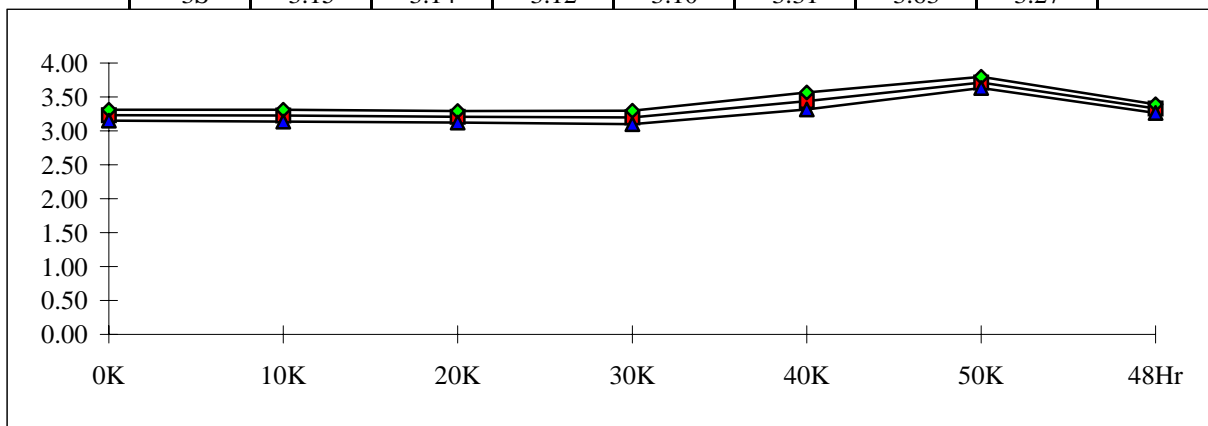
The RADTEST® DATA SERVICE is a compilation of radiation test results on Analog Devices' Space grade products. It is designed to assist customers in selecting the right product for applications where radiation is a consideration. Many products manufactured by Analog Devices, Inc. have been shown to be radiation tolerant to most tactical radiation environments. Analog Devices, Inc. does not make any claim to maintain or guarantee these levels of radiation tolerance without lot qualification test.

It is the responsibility of the Procuring Activity to screen products from Analog Devices, Inc. for compliance to Nuclear Hardness Critical Items (HCI) specifications.

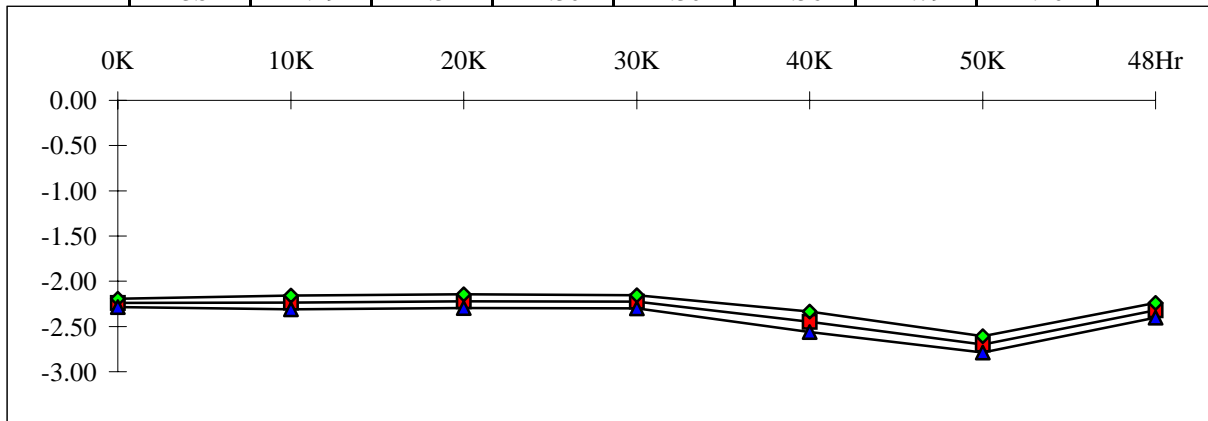
### **Warning:**

Analog Devices, Inc. does not recommend use of this data to qualify other product grades or process levels. Analog Devices, Inc. is not responsible and has no liability for any consequences, and all applicable Warranties are null and void if any Analog Devices product is modified in any way or used outside of normal environmental and operating conditions, including the parameters specified in the corresponding data sheet. Analog Devices, Inc. does not guarantee that wafer manufacturing is the same for all process levels.

T# 5	+ICC, VS=+-15V [MIL T#29]						MA
SN	0K	10K	20K	30K	40K	50K	48Hr
1	3.15	3.16	3.16	3.16	3.16	3.15	3.16
2	3.23	3.22	3.20	3.19	3.40	3.68	3.31
3	3.21	3.20	3.18	3.16	3.40	3.69	3.31
4	3.20	3.20	3.18	3.18	3.44	3.72	3.33
5	3.25	3.25	3.22	3.22	3.48	3.74	3.34
6	3.26	3.26	3.24	3.25	3.48	3.74	3.36
min	3.20	3.20	3.18	3.16	3.40	3.68	3.31
max	3.26	3.26	3.24	3.25	3.48	3.74	3.36
stdev	0.03	0.03	0.03	0.03	0.04	0.03	0.02
mean	3.23	3.23	3.21	3.20	3.44	3.71	3.33
+3S	3.31	3.31	3.29	3.30	3.56	3.80	3.39
-3S	3.15	3.14	3.12	3.10	3.31	3.63	3.27

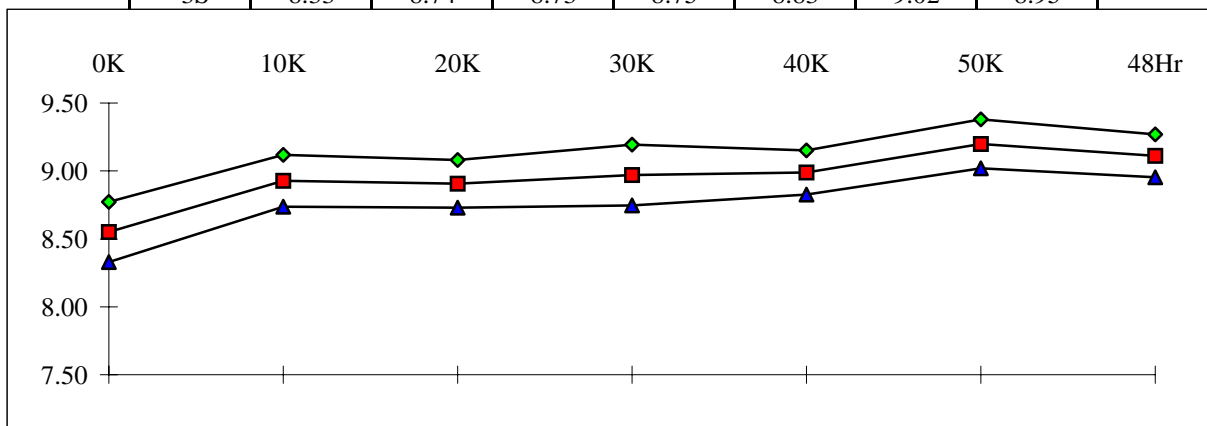


T# 6	-ICC, VS=+-15V [MIL T#30]						MA
SN	0K	10K	20K	30K	40K	50K	48Hr
1	-2.17	-2.17	-2.17	-2.17	-2.18	-2.16	-2.19
2	-2.23	-2.23	-2.22	-2.22	-2.40	-2.66	-2.30
3	-2.23	-2.21	-2.18	-2.19	-2.41	-2.67	-2.29
4	-2.23	-2.21	-2.21	-2.22	-2.46	-2.71	-2.34
5	-2.25	-2.25	-2.23	-2.23	-2.49	-2.73	-2.33
6	-2.26	-2.27	-2.25	-2.26	-2.46	-2.72	-2.35
min	-2.26	-2.27	-2.25	-2.26	-2.49	-2.73	-2.35
max	-2.23	-2.21	-2.18	-2.19	-2.40	-2.66	-2.29
stdev	0.02	0.03	0.03	0.02	0.04	0.03	0.03
mean	-2.24	-2.24	-2.22	-2.23	-2.45	-2.70	-2.32
+3S	-2.19	-2.16	-2.14	-2.15	-2.33	-2.61	-2.24
-3S	-2.29	-2.31	-2.30	-2.30	-2.56	-2.79	-2.40

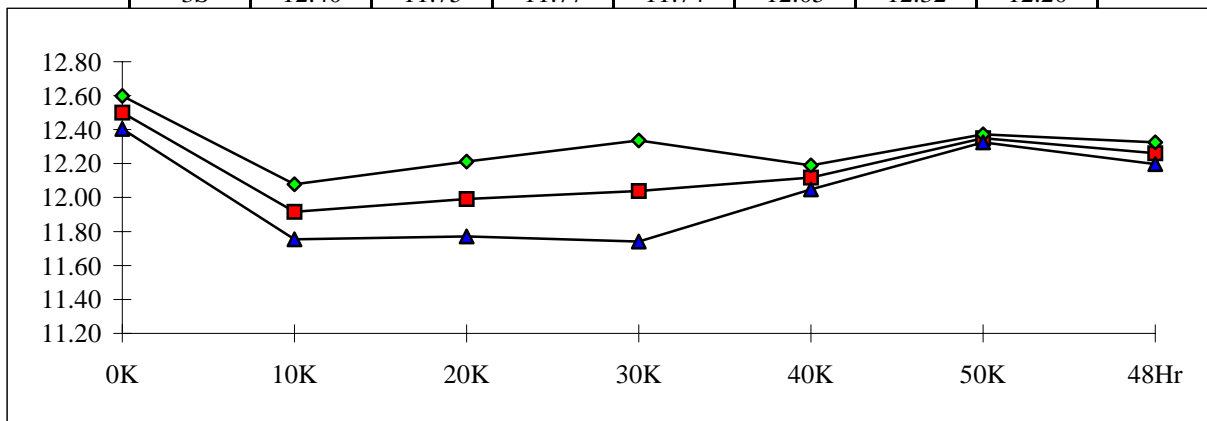




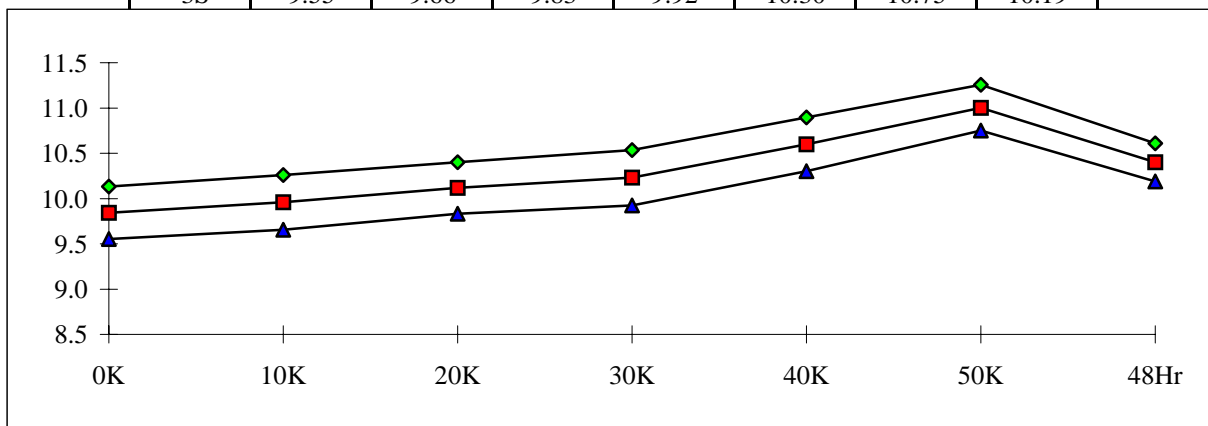
T# 9	II1, VS=+-18V [MIL T#27]						NA
SN	0K	10K	20K	30K	40K	50K	48Hr
1	8.56	8.93	8.91	8.82	8.92	8.92	8.94
2	8.60	8.97	8.86	9.06	9.02	9.17	9.11
3	8.62	8.84	8.99	8.96	9.05	9.19	9.19
4	8.50	8.95	8.86	8.90	8.91	9.27	9.09
5	8.45	8.89	8.88	9.03	8.96	9.24	9.05
6	8.58	8.99	8.94	8.90	9.00	9.12	9.12
min	8.45	8.84	8.86	8.90	8.91	9.12	9.05
max	8.62	8.99	8.99	9.06	9.05	9.27	9.19
stdev	0.07	0.06	0.06	0.07	0.05	0.06	0.05
mean	8.55	8.93	8.91	8.97	8.99	9.20	9.11
+3S	8.77	9.12	9.08	9.19	9.15	9.38	9.27
-3S	8.33	8.74	8.73	8.75	8.83	9.02	8.95



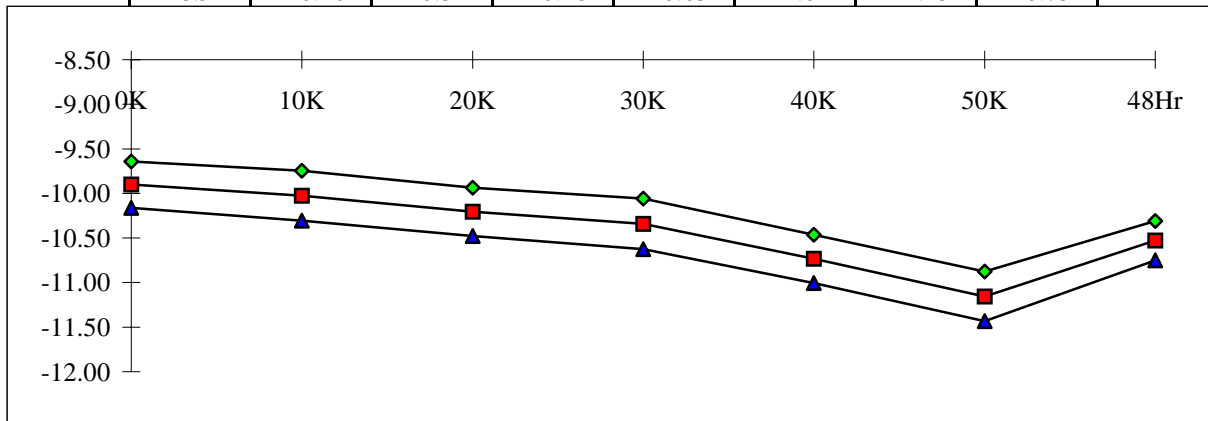
T# 10	II2, VS=+-18V [MIL T#28]						NA
SN	0K	10K	20K	30K	40K	50K	48Hr
1	13.22	11.97	11.97	11.99	12.12	11.97	11.96
2	12.49	11.86	12.12	12.05	12.10	12.35	12.26
3	12.48	11.98	11.95	12.03	12.09	12.35	12.23
4	12.49	11.97	11.99	11.94	12.15	12.34	12.28
5	12.56	11.88	11.94	11.98	12.13	12.35	12.28
6	12.49	11.88	11.96	12.20	12.12	12.36	12.25
min	12.48	11.86	11.94	11.94	12.09	12.34	12.23
max	12.56	11.98	12.12	12.20	12.15	12.36	12.28
stdev	0.03	0.05	0.07	0.10	0.02	0.01	0.02
mean	12.50	11.92	11.99	12.04	12.12	12.35	12.26
+3S	12.60	12.08	12.21	12.34	12.19	12.37	12.33
-3S	12.40	11.75	11.77	11.74	12.05	12.32	12.20



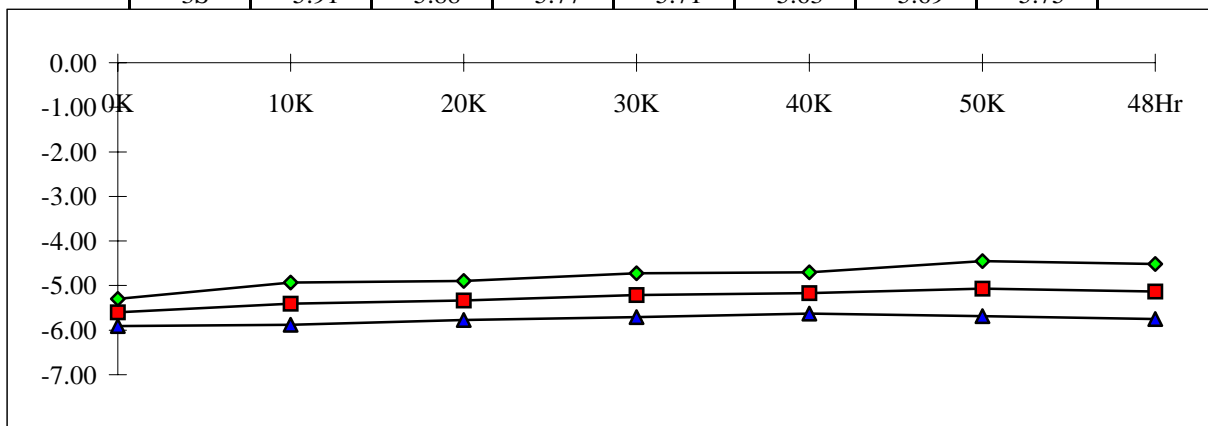
T# 11	VIO(ADJ)+ [MIL T#19]						MV
SN	0K	10K	20K	30K	40K	50K	48Hr
1	9.83	9.81	9.81	9.82	9.82	9.83	9.81
2	9.94	10.05	10.21	10.32	10.66	11.07	10.44
3	9.74	9.86	10.03	10.12	10.49	10.95	10.34
4	9.73	9.84	10.01	10.12	10.51	10.90	10.31
5	9.90	10.04	10.20	10.33	10.72	11.10	10.48
6	9.89	10.01	10.15	10.26	10.62	11.00	10.43
min	9.7	9.8	10.0	10.1	10.5	10.9	10.3
max	9.9	10.0	10.2	10.3	10.7	11.1	10.5
stdev	0.1	0.1	0.1	0.1	0.1	0.1	0.1
mean	9.8	10.0	10.1	10.2	10.6	11.0	10.4
+3S	10.1	10.3	10.4	10.5	10.9	11.3	10.6
-3S	9.55	9.66	9.83	9.92	10.30	10.75	10.19



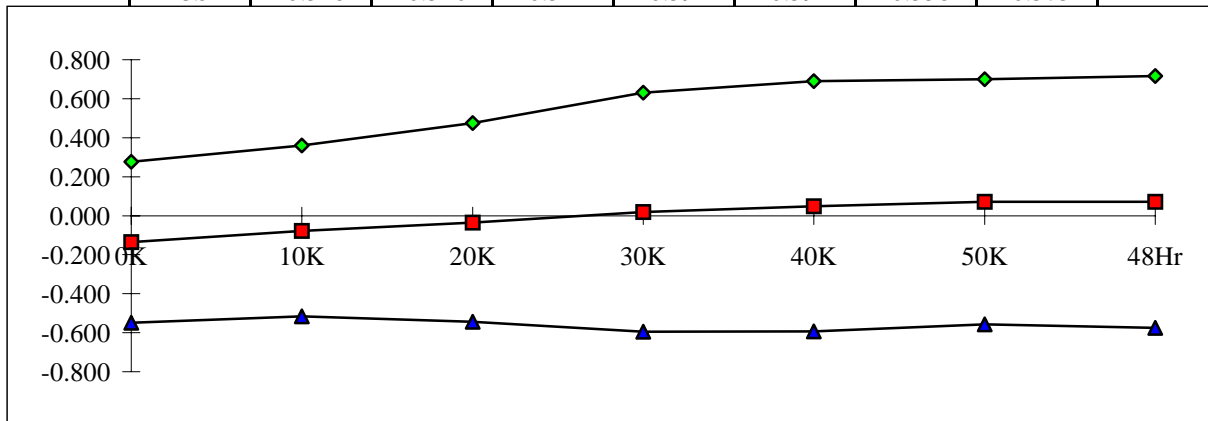
T# 12	VIO(ADJ)- [MIL T#20]						MV
SN	0K	10K	20K	30K	40K	50K	48Hr
1	-9.91	-9.88	-9.88	-9.88	-9.89	-9.89	-9.88
2	-10.00	-10.12	-10.30	-10.43	-10.79	-11.22	-10.57
3	-9.86	-9.99	-10.18	-10.31	-10.70	-11.19	-10.56
4	-9.77	-9.88	-10.07	-10.20	-10.61	-11.01	-10.40
5	-9.92	-10.07	-10.27	-10.43	-10.85	-11.24	-10.59
6	-9.94	-10.06	-10.22	-10.34	-10.72	-11.12	-10.53
min	-10.00	-10.12	-10.30	-10.43	-10.85	-11.24	-10.59
max	-9.77	-9.88	-10.07	-10.20	-10.61	-11.01	-10.40
stdev	0.09	0.09	0.09	0.09	0.09	0.09	0.07
mean	-9.90	-10.03	-10.21	-10.34	-10.73	-11.16	-10.53
+3S	-9.64	-9.75	-9.94	-10.06	-10.46	-10.88	-10.31
-3S	-10.16	-10.31	-10.48	-10.63	-11.01	-11.43	-10.75



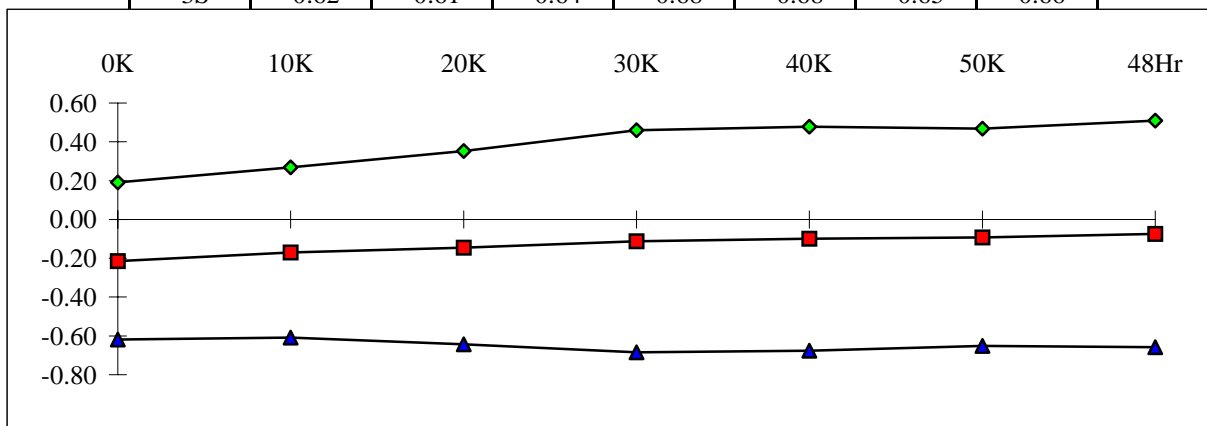
T# 13	IIOR, VS=+-15V, VCM=0V [MIL T#11]						NA
SN	0K	10K	20K	30K	40K	50K	48Hr
1	-5.36	-5.35	-5.34	-5.34	-5.36	-5.32	-5.32
2	-5.65	-5.51	-5.43	-5.30	-5.08	-4.93	-5.02
3	-5.48	-5.26	-5.28	-5.28	-5.27	-5.12	-5.15
4	-5.58	-5.26	-5.18	-5.14	-5.14	-5.25	-5.18
5	-5.56	-5.37	-5.23	-4.97	-4.97	-4.79	-4.88
6	-5.75	-5.63	-5.53	-5.38	-5.36	-5.27	-5.43
min	-5.75	-5.63	-5.53	-5.38	-5.36	-5.27	-5.43
max	-5.48	-5.26	-5.18	-4.97	-4.97	-4.79	-4.88
stdev	0.10	0.16	0.15	0.16	0.15	0.21	0.21
mean	-5.60	-5.41	-5.33	-5.22	-5.17	-5.07	-5.13
+3S	-5.30	-4.93	-4.89	-4.72	-4.70	-4.45	-4.52
-3S	-5.91	-5.88	-5.77	-5.71	-5.63	-5.69	-5.75



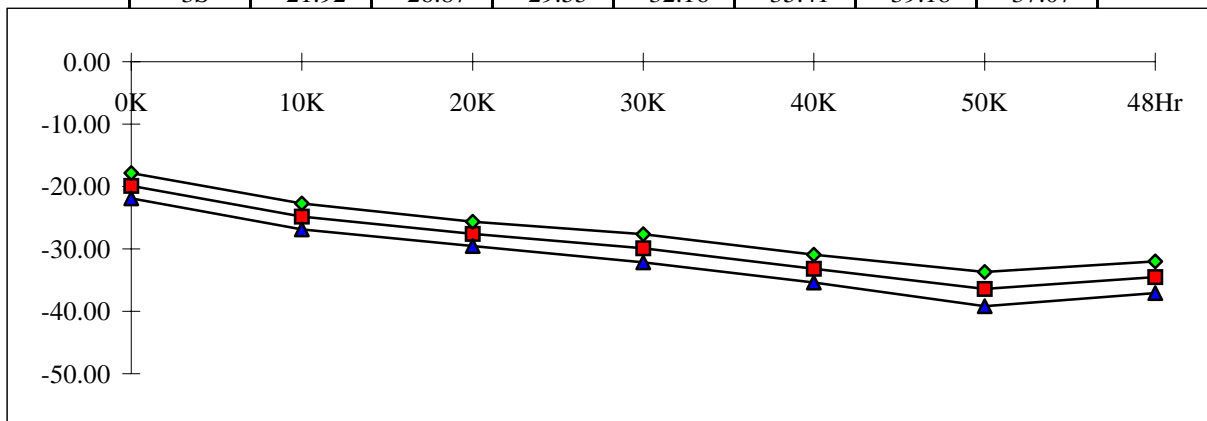
T# 14	VIO, VS=+-15V, VCM=0V [MIL T#1]						MV
SN	0K	10K	20K	30K	40K	50K	48Hr
1	0.151	0.171	0.167	0.167	0.164	0.163	0.171
2	-0.195	-0.147	-0.107	-0.056	-0.024	0.011	0.030
3	0.106	0.175	0.247	0.344	0.374	0.388	0.411
4	-0.176	-0.127	-0.126	-0.114	-0.110	-0.083	-0.086
5	-0.183	-0.097	-0.005	0.083	0.144	0.164	0.130
6	-0.233	-0.195	-0.182	-0.164	-0.146	-0.127	-0.129
min	-0.233	-0.195	-0.182	-0.164	-0.146	-0.127	-0.129
max	0.106	0.175	0.247	0.344	0.374	0.388	0.411
stdev	0.137	0.146	0.170	0.204	0.214	0.209	0.215
mean	-0.136	-0.078	-0.035	0.019	0.048	0.071	0.071
+3S	0.276	0.359	0.475	0.632	0.689	0.699	0.717
-3S	-0.548	-0.516	-0.544	-0.594	-0.594	-0.558	-0.575



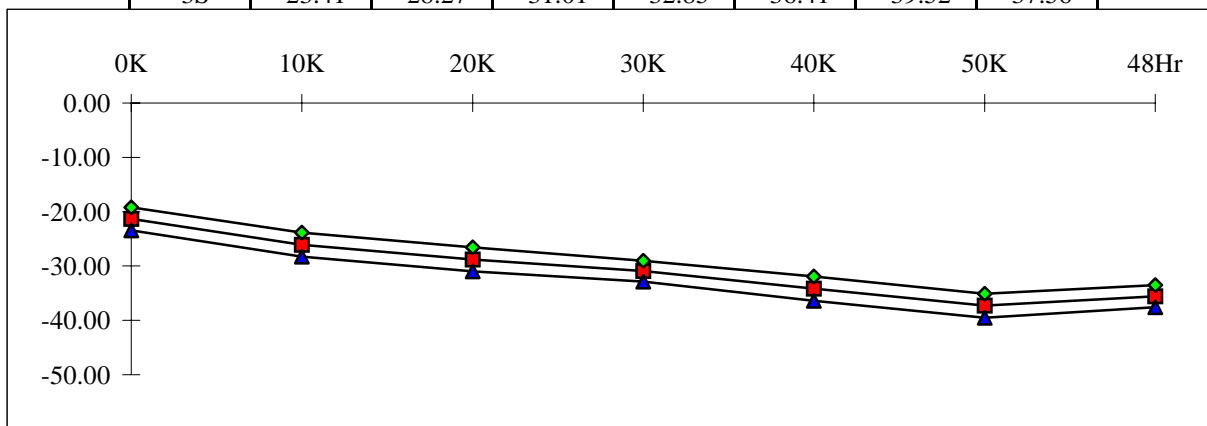
T# 15	VIOR, VS=+-15V, VCM=0V [MIL T#5]						MV
SN	0K	10K	20K	30K	40K	50K	48Hr
1	0.05	0.07	0.07	0.07	0.07	0.06	0.07
2	-0.25	-0.22	-0.20	-0.17	-0.15	-0.14	-0.11
3	-0.04	0.01	0.05	0.12	0.12	0.11	0.16
4	-0.20	-0.16	-0.17	-0.17	-0.16	-0.15	-0.14
5	-0.16	-0.10	-0.04	0.02	0.06	0.07	0.06
6	-0.41	-0.38	-0.38	-0.37	-0.36	-0.35	-0.34
min	-0.41	-0.38	-0.38	-0.37	-0.36	-0.35	-0.34
max	-0.04	0.01	0.05	0.12	0.12	0.11	0.16
stdev	0.13	0.15	0.17	0.19	0.19	0.19	0.19
mean	-0.21	-0.17	-0.15	-0.11	-0.10	-0.09	-0.07
+3S	0.19	0.27	0.35	0.46	0.48	0.47	0.51
-3S	-0.62	-0.61	-0.64	-0.68	-0.68	-0.65	-0.66



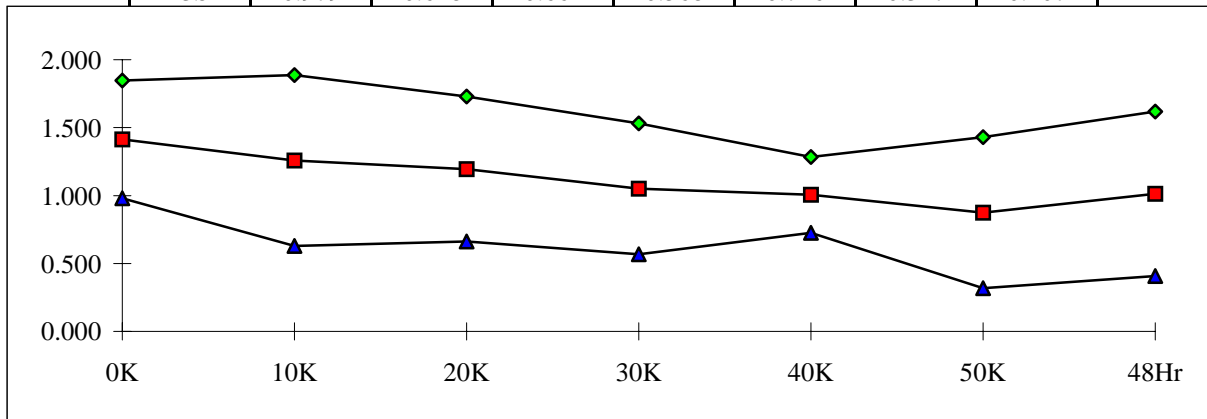
T# 16	+IIB, VS=+-15V, VCM=0V [MIL T#12]						NA
SN	0K	10K	20K	30K	40K	50K	48Hr
1	-20.15	-20.20	-20.24	-20.23	-20.20	-20.20	-20.15
2	-20.79	-25.66	-28.29	-30.64	-33.87	-37.28	-35.36
3	-19.97	-24.89	-27.66	-29.79	-33.08	-36.44	-34.54
4	-19.82	-24.58	-27.30	-29.31	-32.52	-35.56	-33.76
5	-19.97	-25.08	-28.06	-30.69	-34.00	-37.40	-35.39
6	-18.89	-23.79	-26.64	-29.05	-32.38	-35.47	-33.61
min	-20.79	-25.66	-28.29	-30.69	-34.00	-37.40	-35.39
max	-18.89	-23.79	-26.64	-29.05	-32.38	-35.47	-33.61
stdev	0.68	0.69	0.65	0.75	0.75	0.92	0.85
mean	-19.89	-24.80	-27.59	-29.90	-33.17	-36.43	-34.53
+3S	-17.86	-22.74	-25.63	-27.63	-30.93	-33.69	-32.00
-3S	-21.92	-26.87	-29.55	-32.16	-35.41	-39.18	-37.07



T# 17	-IIB, VS=+-15V, VCM=0V [MIL T#15]						NA
SN	0K	10K	20K	30K	40K	50K	48Hr
1	-21.21	-21.33	-21.31	-21.28	-21.30	-21.32	-21.47
2	-22.23	-26.94	-29.69	-31.68	-34.87	-38.04	-36.11
3	-21.15	-25.83	-28.60	-30.89	-34.00	-37.24	-35.47
4	-21.35	-25.88	-28.42	-30.50	-33.67	-36.65	-34.92
5	-21.51	-26.61	-29.35	-31.48	-35.03	-38.07	-36.35
6	-20.27	-25.06	-27.85	-30.18	-33.31	-36.52	-34.88
min	-22.23	-26.94	-29.69	-31.68	-35.03	-38.07	-36.35
max	-20.27	-25.06	-27.85	-30.18	-33.31	-36.52	-34.88
stdev	0.70	0.74	0.74	0.63	0.75	0.74	0.67
mean	-21.30	-26.06	-28.78	-30.95	-34.18	-37.30	-35.55
+3S	-19.19	-23.86	-26.56	-29.05	-31.94	-35.09	-33.53
-3S	-23.41	-28.27	-31.01	-32.85	-36.41	-39.52	-37.56

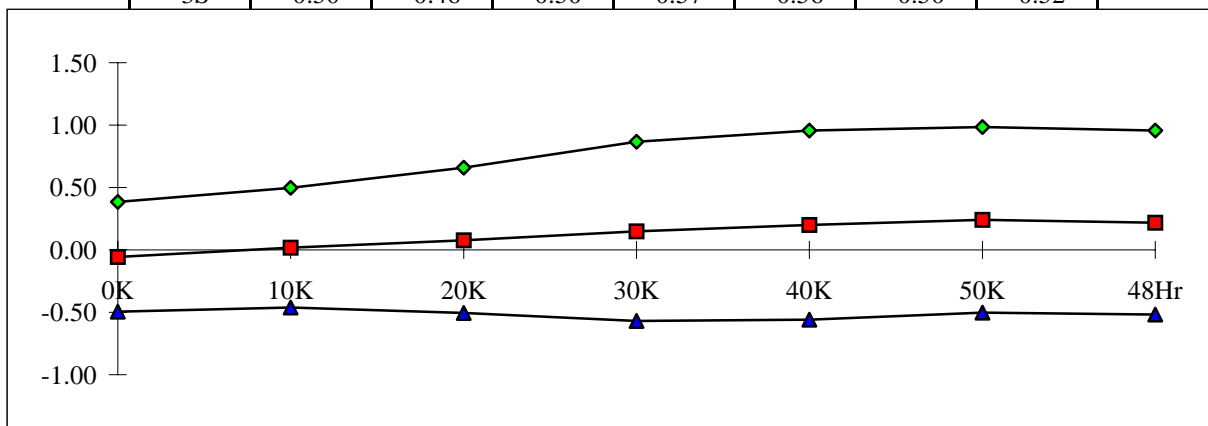


T# 18	IIO, VS=+-15V, VCM=0V [MIL T#8]						NA
SN	0K	10K	20K	30K	40K	50K	48Hr
1	1.052	1.124	1.072	1.048	1.096	1.118	1.315
2	1.437	1.273	1.407	1.038	0.999	0.758	0.750
3	1.180	0.935	0.938	1.094	0.919	0.800	0.931
4	1.528	1.295	1.124	1.197	1.152	1.090	1.156
5	1.534	1.523	1.297	0.782	1.026	0.670	0.958
6	1.385	1.264	1.212	1.139	0.932	1.048	1.265
min	1.180	0.935	0.938	0.782	0.919	0.670	0.750
max	1.534	1.523	1.407	1.197	1.152	1.090	1.265
stdev	0.145	0.210	0.178	0.161	0.093	0.185	0.202
mean	1.413	1.258	1.196	1.050	1.006	0.873	1.012
+3S	1.846	1.888	1.730	1.532	1.285	1.429	1.617
-3S	0.979	0.628	0.661	0.568	0.726	0.317	0.407

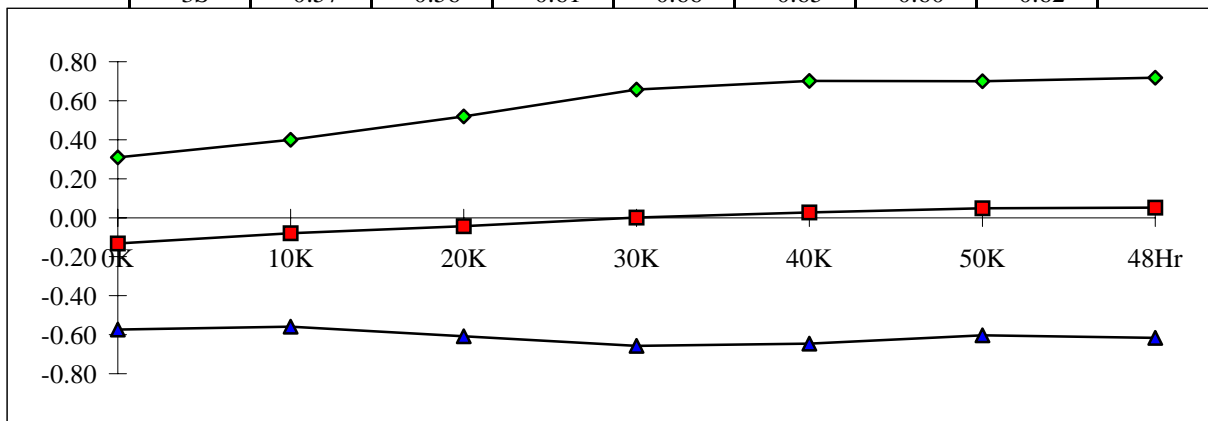




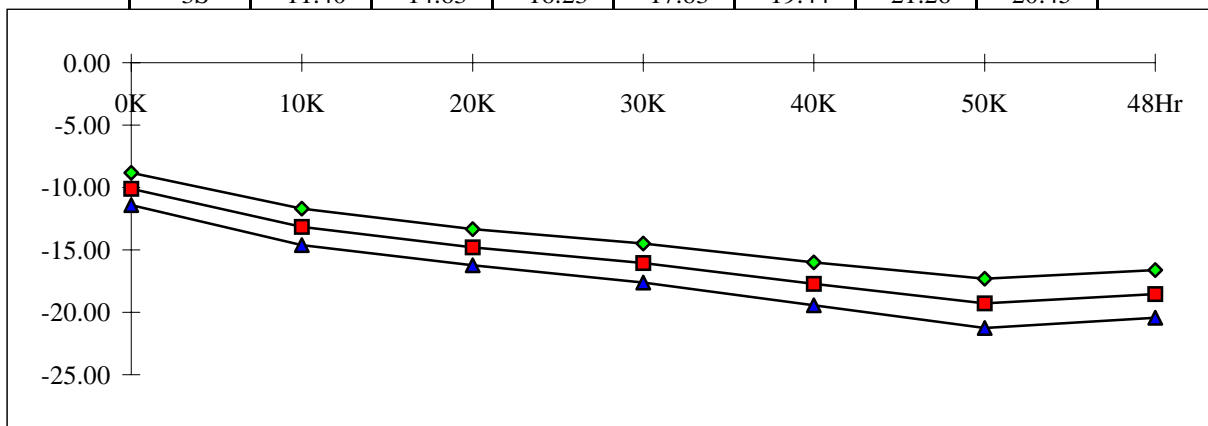
T# 19	VIO, V+=2V,V=-28V,VCM=13V [MIL T#3]						MV
SN	0K	10K	20K	30K	40K	50K	48Hr
1	0.20	0.22	0.22	0.22	0.22	0.21	0.22
2	-0.15	-0.08	-0.03	0.04	0.09	0.15	0.15
3	0.20	0.28	0.37	0.50	0.55	0.58	0.58
4	-0.13	-0.06	-0.05	-0.03	-0.01	0.04	0.02
5	-0.05	0.06	0.18	0.29	0.38	0.42	0.36
6	-0.15	-0.10	-0.08	-0.05	-0.02	0.02	0.00
min	-0.15	-0.10	-0.08	-0.05	-0.02	0.02	0.00
max	0.20	0.28	0.37	0.50	0.55	0.58	0.58
stdev	0.15	0.16	0.19	0.24	0.25	0.25	0.25
mean	-0.06	0.02	0.08	0.15	0.20	0.24	0.22
+3S	0.38	0.50	0.66	0.87	0.96	0.98	0.96
-3S	-0.50	-0.46	-0.50	-0.57	-0.56	-0.50	-0.52



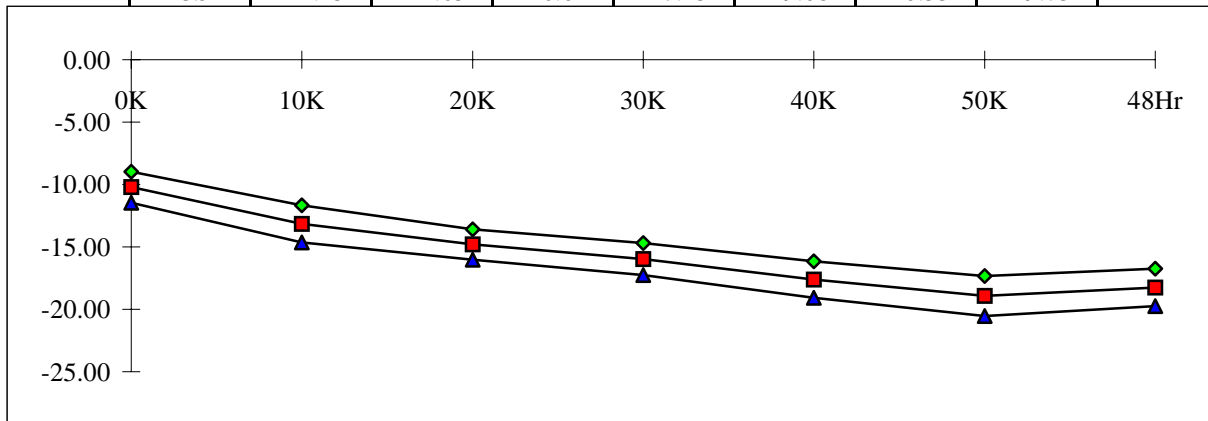
T# 20	VIOR, V+=2V,V=-28V,VCM=13V [MIL T#7]						MV
SN	0K	10K	20K	30K	40K	50K	48Hr
1	0.09	0.11	0.11	0.11	0.11	0.10	0.11
2	-0.20	-0.16	-0.13	-0.09	-0.07	-0.03	-0.02
3	0.04	0.10	0.17	0.24	0.26	0.27	0.30
4	-0.15	-0.10	-0.10	-0.09	-0.08	-0.05	-0.05
5	-0.02	0.05	0.13	0.21	0.26	0.28	0.26
6	-0.33	-0.29	-0.28	-0.27	-0.24	-0.22	-0.23
min	-0.33	-0.29	-0.28	-0.27	-0.24	-0.22	-0.23
max	0.04	0.10	0.17	0.24	0.26	0.28	0.30
stdev	0.15	0.16	0.19	0.22	0.22	0.22	0.22
mean	-0.13	-0.08	-0.04	0.00	0.03	0.05	0.05
+3S	0.31	0.40	0.52	0.66	0.70	0.70	0.72
-3S	-0.57	-0.56	-0.61	-0.66	-0.65	-0.60	-0.62



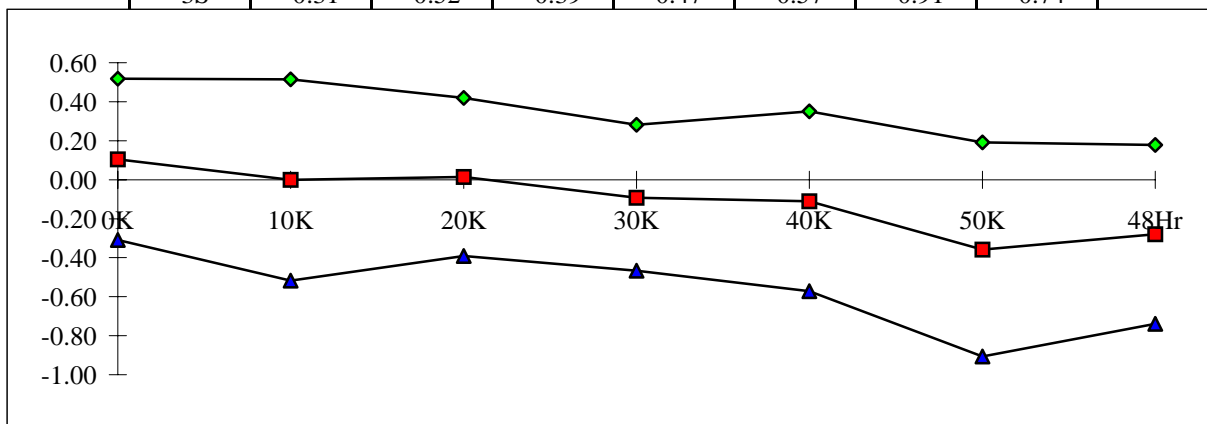
T# 21	+IIB, V+=2V,V=-28V,VCM=13V [MIL T#14]						NA
SN	0K	10K	20K	30K	40K	50K	48Hr
1	-10.08	-10.07	-10.21	-10.17	-10.21	-10.17	-10.15
2	-10.62	-13.68	-15.21	-16.55	-18.18	-19.98	-19.22
3	-10.17	-13.21	-14.81	-15.99	-17.68	-19.23	-18.43
4	-9.95	-12.88	-14.47	-15.60	-17.26	-18.62	-17.95
5	-10.35	-13.56	-15.29	-16.64	-18.42	-19.93	-19.15
6	-9.48	-12.49	-14.15	-15.52	-17.09	-18.68	-17.88
min	-10.62	-13.68	-15.29	-16.64	-18.42	-19.98	-19.22
max	-9.48	-12.49	-14.15	-15.52	-17.09	-18.62	-17.88
stdev	0.43	0.49	0.48	0.52	0.57	0.66	0.64
mean	-10.11	-13.16	-14.78	-16.06	-17.73	-19.29	-18.53
+3S	-8.82	-11.70	-13.33	-14.49	-16.01	-17.32	-16.61
-3S	-11.40	-14.63	-16.23	-17.63	-19.44	-21.26	-20.45



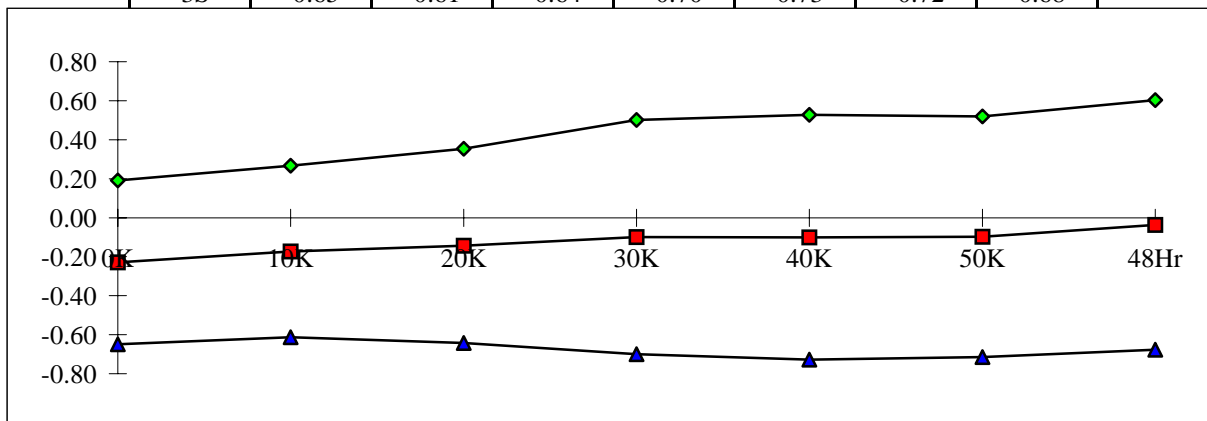
T# 22	-IIB, V+=2V,V=-28V,VCM=13V [MIL T#17]						NA
SN	0K	10K	20K	30K	40K	50K	48Hr
1	-10.05	-10.23	-10.16	-10.14	-10.12	-10.13	-10.11
2	-10.74	-13.78	-15.27	-16.45	-18.18	-19.44	-18.73
3	-10.06	-12.93	-14.68	-15.94	-17.49	-18.98	-18.25
4	-10.21	-13.05	-14.59	-15.64	-17.22	-18.52	-17.78
5	-10.44	-13.53	-15.15	-16.35	-18.07	-19.44	-18.75
6	-9.64	-12.53	-14.30	-15.47	-17.11	-18.27	-17.71
min	-10.74	-13.78	-15.27	-16.45	-18.18	-19.44	-18.75
max	-9.64	-12.53	-14.30	-15.47	-17.11	-18.27	-17.71
stdev	0.41	0.50	0.41	0.43	0.49	0.53	0.50
mean	-10.22	-13.16	-14.80	-15.97	-17.62	-18.93	-18.25
+3S	-8.98	-11.67	-13.58	-14.68	-16.15	-17.33	-16.76
-3S	-11.45	-14.65	-16.01	-17.25	-19.08	-20.53	-19.73



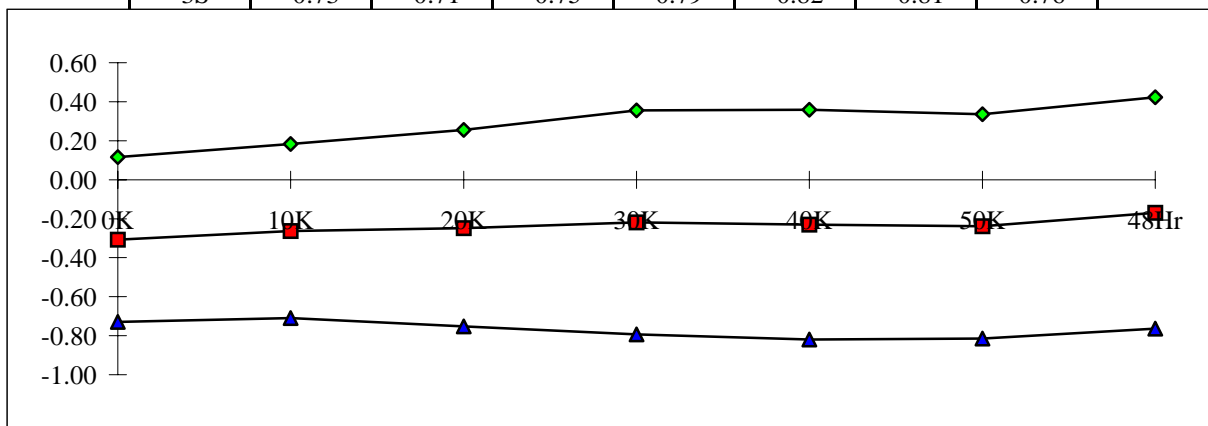
T# 23	IIO, V+=2V, V--=-28V, VCM=13V [MIL T#10]						NA
SN	0K	10K	20K	30K	40K	50K	48Hr
1	-0.03	0.15	-0.05	-0.03	-0.09	-0.04	-0.04
2	0.12	0.10	0.06	-0.10	0.00	-0.54	-0.48
3	-0.12	-0.28	-0.13	-0.06	-0.18	-0.25	-0.19
4	0.26	0.17	0.12	0.04	-0.04	-0.10	-0.16
5	0.10	-0.03	-0.13	-0.29	-0.35	-0.49	-0.41
6	0.16	0.04	0.15	-0.05	0.02	-0.41	-0.16
min	-0.12	-0.28	-0.13	-0.29	-0.35	-0.54	-0.48
max	0.26	0.17	0.15	0.04	0.02	-0.10	-0.16
stdev	0.14	0.17	0.13	0.12	0.15	0.18	0.15
mean	0.10	0.00	0.01	-0.09	-0.11	-0.36	-0.28
+3S	0.52	0.52	0.42	0.28	0.35	0.19	0.18
-3S	-0.31	-0.52	-0.39	-0.47	-0.57	-0.91	-0.74



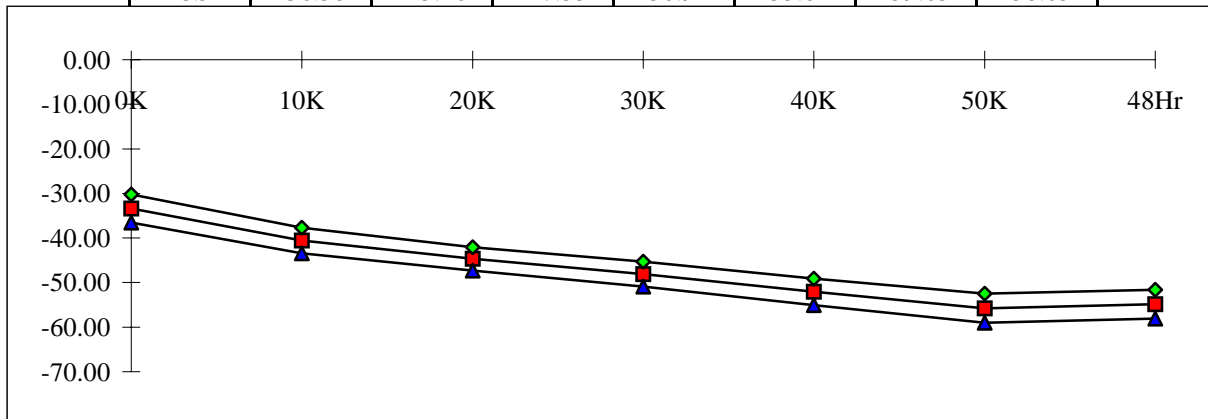
T# 24	VIO, V+=29.5V, V--=-0.5V [MIL T#2]						MV
SN	0K	10K	20K	30K	40K	50K	48Hr
1	0.08	0.11	0.11	0.10	0.10	0.10	0.11
2	-0.26	-0.21	-0.18	-0.14	-0.14	-0.13	-0.05
3	0.01	0.08	0.13	0.22	0.23	0.22	0.30
4	-0.24	-0.20	-0.21	-0.21	-0.23	-0.22	-0.17
5	-0.30	-0.23	-0.15	-0.07	-0.05	-0.04	-0.01
6	-0.35	-0.31	-0.31	-0.30	-0.32	-0.32	-0.26
min	-0.35	-0.31	-0.31	-0.30	-0.32	-0.32	-0.26
max	0.01	0.08	0.13	0.22	0.23	0.22	0.30
stdev	0.14	0.15	0.17	0.20	0.21	0.21	0.21
mean	-0.23	-0.17	-0.14	-0.10	-0.10	-0.10	-0.04
+3S	0.19	0.27	0.35	0.50	0.53	0.52	0.60
-3S	-0.65	-0.61	-0.64	-0.70	-0.73	-0.72	-0.68



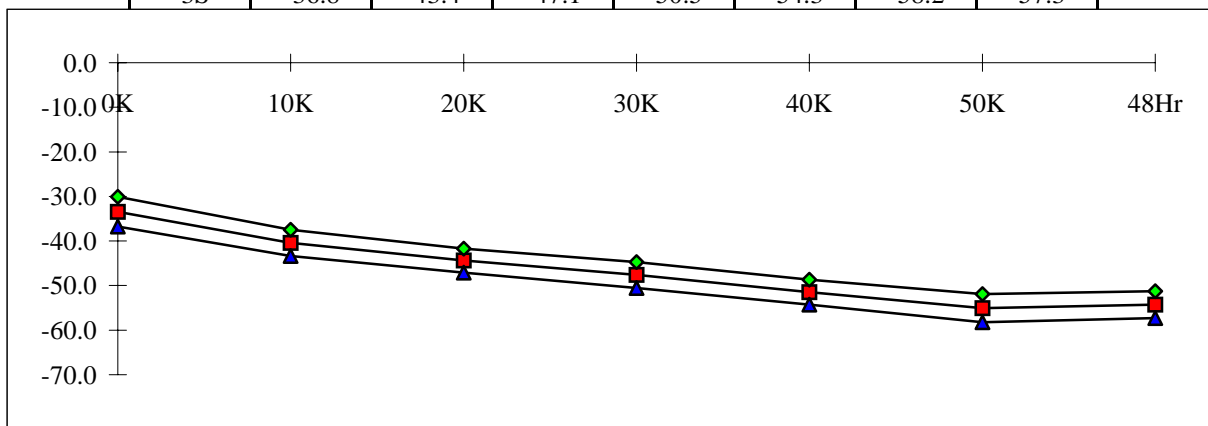
T# 25	VIOR, V+=29.5V, V=-0.5V [MIL T#6]						MV
SN	0K	10K	20K	30K	40K	50K	48Hr
1	0.00	0.02	0.02	0.02	0.01	0.01	0.02
2	-0.31	-0.28	-0.27	-0.24	-0.25	-0.26	-0.18
3	-0.14	-0.09	-0.05	0.02	0.00	-0.02	0.07
4	-0.27	-0.23	-0.25	-0.25	-0.27	-0.28	-0.21
5	-0.28	-0.22	-0.17	-0.12	-0.11	-0.11	-0.07
6	-0.53	-0.50	-0.51	-0.50	-0.52	-0.53	-0.47
min	-0.53	-0.50	-0.51	-0.50	-0.52	-0.53	-0.47
max	-0.14	-0.09	-0.05	0.02	0.00	-0.02	0.07
stdev	0.14	0.15	0.17	0.19	0.20	0.19	0.20
mean	-0.31	-0.26	-0.25	-0.22	-0.23	-0.24	-0.17
+3S	0.12	0.18	0.25	0.36	0.36	0.34	0.42
-3S	-0.73	-0.71	-0.75	-0.79	-0.82	-0.81	-0.76



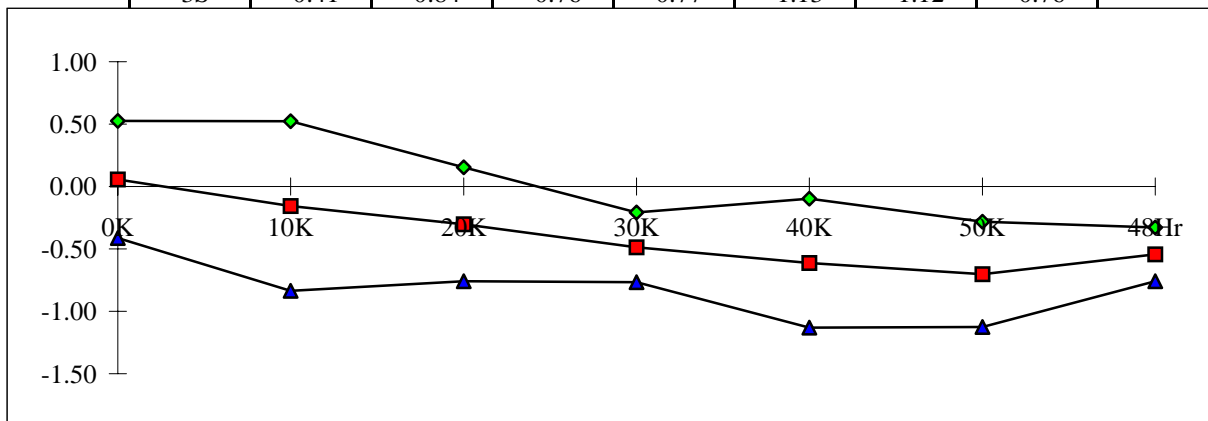
T# 26	+IIB, V+=29.5V, V=-0.5V [MIL T#13]						NA
SN	0K	10K	20K	30K	40K	50K	48Hr
1	-34.11	-34.25	-34.28	-34.27	-34.28	-34.28	-34.25
2	-34.77	-41.72	-45.72	-49.15	-53.10	-56.93	-55.91
3	-33.58	-40.84	-44.80	-48.11	-52.09	-55.95	-54.81
4	-33.53	-40.43	-44.36	-47.41	-51.22	-54.63	-53.82
5	-33.26	-40.85	-45.15	-48.89	-53.02	-56.67	-55.89
6	-31.79	-39.10	-43.38	-46.96	-50.97	-54.64	-53.68
min	-34.77	-41.72	-45.72	-49.15	-53.10	-56.93	-55.91
max	-31.79	-39.10	-43.38	-46.96	-50.97	-54.63	-53.68
stdev	1.06	0.96	0.88	0.94	0.99	1.09	1.08
mean	-33.38	-40.59	-44.68	-48.10	-52.08	-55.76	-54.82
+3S	-30.19	-37.72	-42.04	-45.29	-49.12	-52.50	-51.60
-3S	-36.58	-43.46	-47.33	-50.91	-55.04	-59.03	-58.05



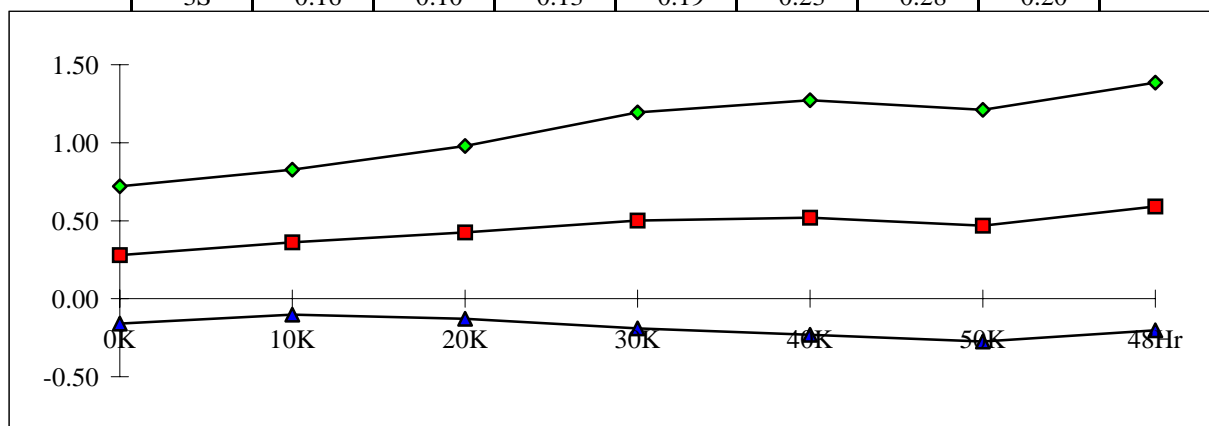
T# 27	-IIB, V+=29.5, V-=-0.5V [MIL T#16]						NA
SN	0K	10K	20K	30K	40K	50K	48Hr
1	-33.94	-34.07	-34.16	-34.19	-34.15	-34.12	-33.91
2	-34.99	-41.77	-45.48	-48.74	-52.49	-56.08	-55.35
3	-33.42	-40.31	-44.44	-47.60	-51.63	-55.09	-54.21
4	-33.50	-40.26	-43.82	-46.77	-50.48	-54.00	-53.36
5	-33.45	-40.79	-44.96	-48.41	-52.19	-56.13	-55.26
6	-31.85	-39.04	-43.21	-46.55	-50.53	-54.00	-53.21
min	-35.0	-41.8	-45.5	-48.7	-52.5	-56.1	-55.4
max	-31.8	-39.0	-43.2	-46.6	-50.5	-54.0	-53.2
stdev	1.1	1.0	0.9	1.0	0.9	1.1	1.0
mean	-33.4	-40.4	-44.4	-47.6	-51.5	-55.1	-54.3
+3S	-30.1	-37.5	-41.7	-44.7	-48.7	-51.9	-51.2
-3S	-36.8	-43.4	-47.1	-50.5	-54.3	-58.2	-57.3



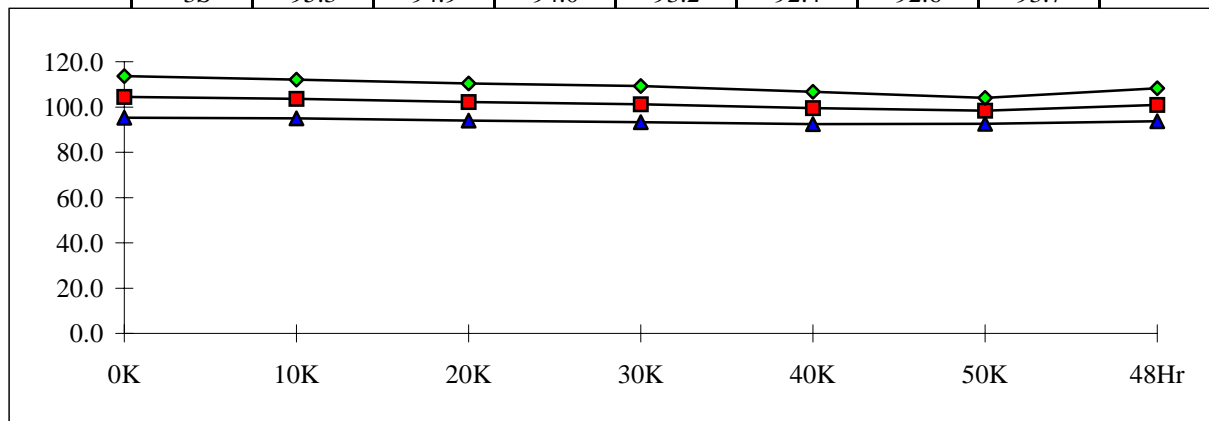
T# 28	IIO, V+=29.5V, V-=-0.5V [MIL T#9]						NA
SN	0K	10K	20K	30K	40K	50K	48Hr
1	-0.17	-0.19	-0.12	-0.08	-0.13	-0.16	-0.34
2	0.23	0.05	-0.24	-0.41	-0.60	-0.84	-0.56
3	-0.16	-0.54	-0.37	-0.51	-0.46	-0.86	-0.60
4	-0.03	-0.18	-0.54	-0.63	-0.74	-0.64	-0.46
5	0.18	-0.06	-0.19	-0.48	-0.83	-0.54	-0.62
6	0.06	-0.06	-0.17	-0.40	-0.44	-0.65	-0.47
min	-0.16	-0.54	-0.54	-0.63	-0.83	-0.86	-0.62
max	0.23	0.05	-0.17	-0.40	-0.44	-0.54	-0.46
stdev	0.16	0.23	0.15	0.09	0.17	0.14	0.07
mean	0.06	-0.16	-0.30	-0.49	-0.61	-0.70	-0.54
+3S	0.53	0.52	0.15	-0.21	-0.10	-0.28	-0.33
-3S	-0.41	-0.84	-0.76	-0.77	-1.13	-1.12	-0.76



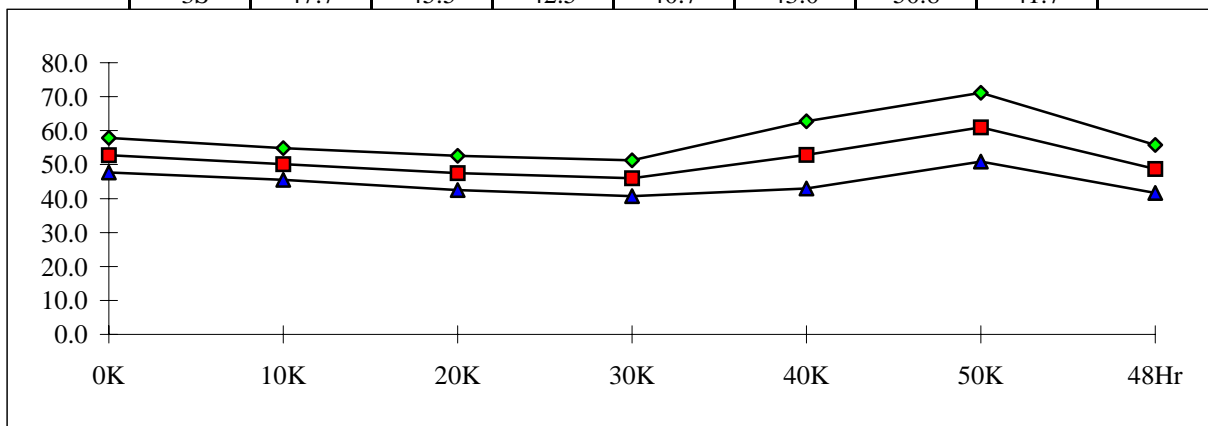
T# 29	VIO, VS=+-2.5V, VCM=0V [MIL T#4]						MV
SN	0K	10K	20K	30K	40K	50K	48Hr
1	0.60	0.62	0.62	0.62	0.62	0.61	0.62
2	0.28	0.36	0.42	0.49	0.52	0.48	0.62
3	0.53	0.62	0.72	0.85	0.88	0.82	0.98
4	0.23	0.30	0.32	0.34	0.32	0.27	0.39
5	0.21	0.32	0.44	0.57	0.62	0.57	0.66
6	0.15	0.21	0.23	0.26	0.25	0.20	0.31
min	0.15	0.21	0.23	0.26	0.25	0.20	0.31
max	0.53	0.62	0.72	0.85	0.88	0.82	0.98
stdev	0.15	0.15	0.18	0.23	0.25	0.25	0.26
mean	0.28	0.36	0.43	0.50	0.52	0.47	0.59
+3S	0.72	0.83	0.98	1.19	1.27	1.21	1.39
-3S	-0.16	-0.10	-0.13	-0.19	-0.23	-0.28	-0.20



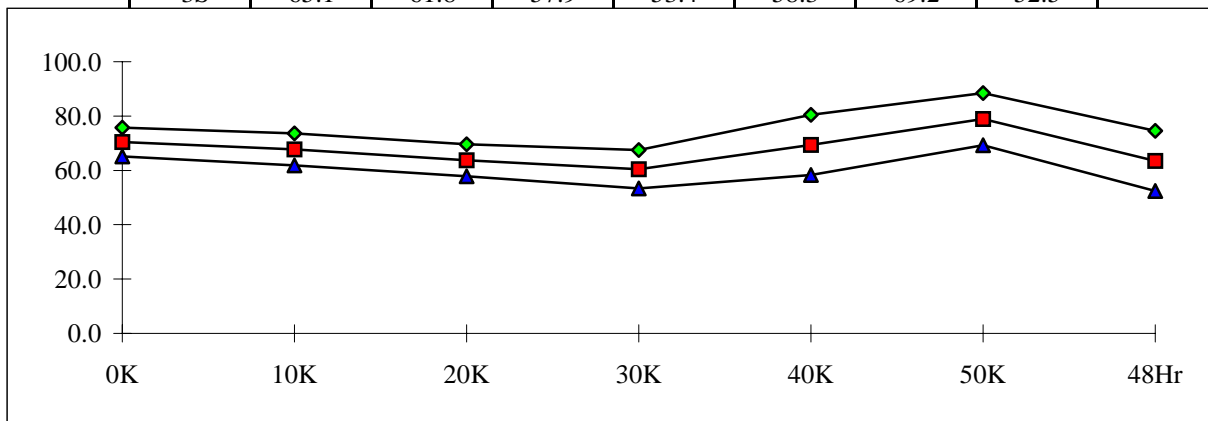
T# 30	CMR, VCM=-14.5V TO 13V [MIL T#21]						DB
SN	0K	10K	20K	30K	40K	50K	48Hr
1	107.60	107.88	108.07	107.77	107.77	107.85	108.02
2	107.78	106.65	104.88	103.68	101.76	99.93	102.95
3	103.47	102.56	101.22	100.07	98.68	97.56	100.04
4	107.37	106.21	104.92	104.02	101.90	100.41	103.55
5	100.57	99.79	98.46	97.57	96.16	95.65	97.51
6	103.06	102.50	101.63	100.91	99.17	98.18	100.63
min	100.6	99.8	98.5	97.6	96.2	95.6	97.5
max	107.8	106.6	104.9	104.0	101.9	100.4	103.5
stdev	3.1	2.9	2.7	2.7	2.4	1.9	2.4
mean	104.5	103.5	102.2	101.3	99.5	98.3	100.9
+3S	113.6	112.1	110.4	109.3	106.7	104.1	108.2
-3S	95.3	94.9	94.0	93.2	92.4	92.6	93.7



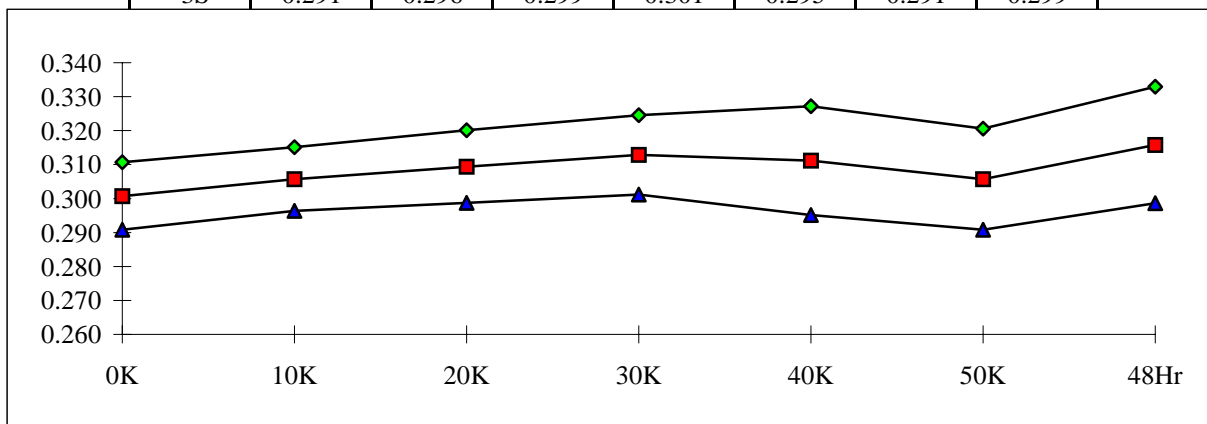
T# 31		+AVE, VGND=0V TO 10V [MIL T#97]						V/MV
SN	0K	10K	20K	30K	40K	50K	48Hr	
1	49.1	49.0	49.9	49.6	49.6	50.0	50.1	
2	50.3	48.2	45.0	43.2	48.2	56.2	46.2	
3	51.9	49.4	46.8	45.4	51.2	59.6	46.6	
4	54.3	52.4	49.2	47.6	56.9	65.4	51.6	
5	54.2	50.2	47.8	46.6	53.6	61.5	48.8	
6	53.2	50.5	48.8	47.1	54.3	62.3	50.6	
min	50.3	48.2	45.0	43.2	48.2	56.2	46.2	
max	54.3	52.4	49.2	47.6	56.9	65.4	51.6	
stdev	1.7	1.5	1.7	1.8	3.3	3.4	2.4	
mean	52.8	50.2	47.5	46.0	52.9	61.0	48.7	
+3S	57.9	54.8	52.6	51.3	62.8	71.1	55.8	
-3S	47.7	45.5	42.5	40.7	43.0	50.8	41.7	



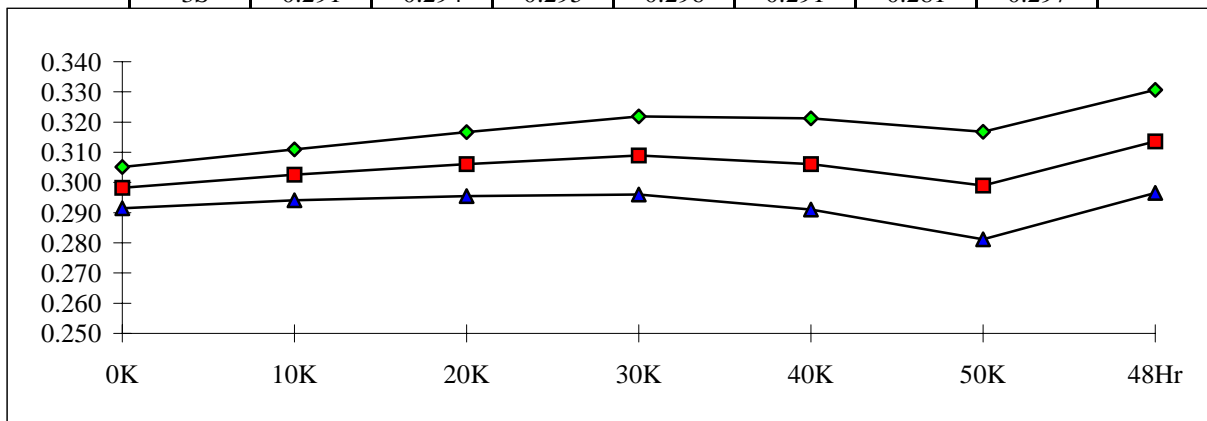
T# 32		-AVE, VGND=0V TO -10V [MIL T#98]						V/MV
SN	0K	10K	20K	30K	40K	50K	48Hr	
1	67.5	69.8	67.3	68.6	67.4	67.3	67.5	
2	68.3	65.2	61.6	58.7	65.0	75.5	60.3	
3	70.0	66.6	62.2	58.1	67.2	77.1	60.8	
4	71.8	69.5	66.5	64.1	74.8	84.0	69.4	
5	72.6	69.8	64.5	60.3	69.1	78.4	62.6	
6	69.4	67.3	64.0	61.2	70.6	79.2	64.5	
min	68.3	65.2	61.6	58.1	65.0	75.5	60.3	
max	72.6	69.8	66.5	64.1	74.8	84.0	69.4	
stdev	1.8	2.0	2.0	2.4	3.7	3.2	3.7	
mean	70.4	67.7	63.8	60.5	69.3	78.9	63.5	
+3S	75.7	73.6	69.6	67.5	80.4	88.5	74.6	
-3S	65.1	61.8	57.9	53.4	58.3	69.2	52.5	



T# 33	VOL1, VCM=-1.75V [MIL T#22]						V
SN	0K	10K	20K	30K	40K	50K	48Hr
1	0.307	0.309	0.309	0.308	0.309	0.308	0.309
2	0.304	0.309	0.312	0.315	0.316	0.310	0.319
3	0.304	0.309	0.314	0.318	0.316	0.310	0.323
4	0.297	0.302	0.305	0.309	0.305	0.299	0.310
5	0.299	0.305	0.309	0.314	0.312	0.307	0.317
6	0.299	0.304	0.307	0.309	0.307	0.302	0.310
min	0.297	0.302	0.305	0.309	0.305	0.299	0.310
max	0.304	0.309	0.314	0.318	0.316	0.310	0.323
stdev	0.003	0.003	0.004	0.004	0.005	0.005	0.006
mean	0.301	0.306	0.309	0.313	0.311	0.306	0.316
+3S	0.311	0.315	0.320	0.325	0.327	0.321	0.333
-3S	0.291	0.296	0.299	0.301	0.295	0.291	0.299

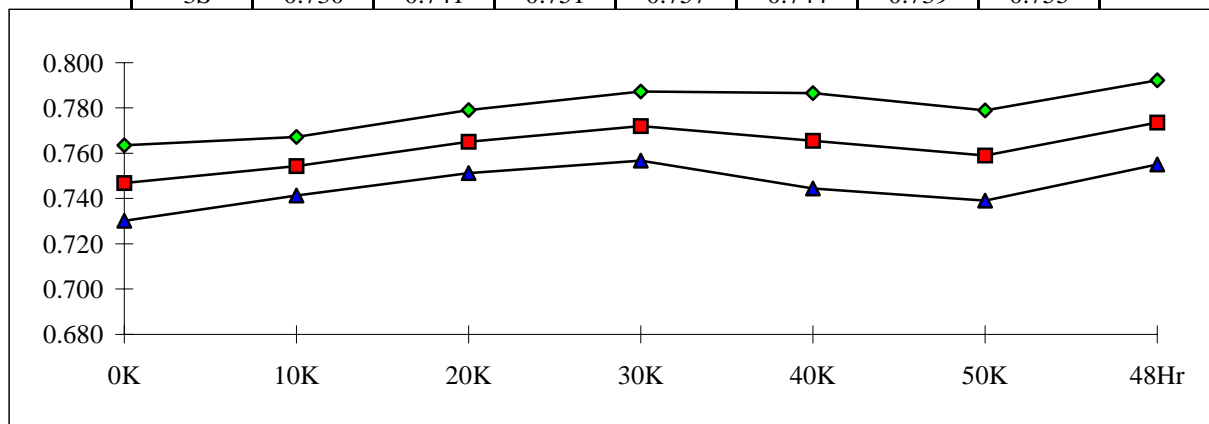


T# 34	VOL2, VCM=0.75V [MIL T#23]						V
SN	0K	10K	20K	30K	40K	50K	48Hr
1	0.305	0.305	0.305	0.305	0.305	0.305	0.306
2	0.299	0.305	0.309	0.312	0.310	0.304	0.318
3	0.302	0.305	0.310	0.314	0.312	0.305	0.319
4	0.297	0.299	0.302	0.304	0.301	0.291	0.307
5	0.297	0.302	0.305	0.310	0.305	0.301	0.316
6	0.297	0.301	0.304	0.305	0.302	0.295	0.308
min	0.297	0.299	0.302	0.304	0.301	0.291	0.307
max	0.302	0.305	0.310	0.314	0.312	0.305	0.319
stdev	0.002	0.003	0.004	0.004	0.005	0.006	0.006
mean	0.298	0.303	0.306	0.309	0.306	0.299	0.314
+3S	0.305	0.311	0.317	0.322	0.321	0.317	0.331
-3S	0.291	0.294	0.295	0.296	0.291	0.281	0.297

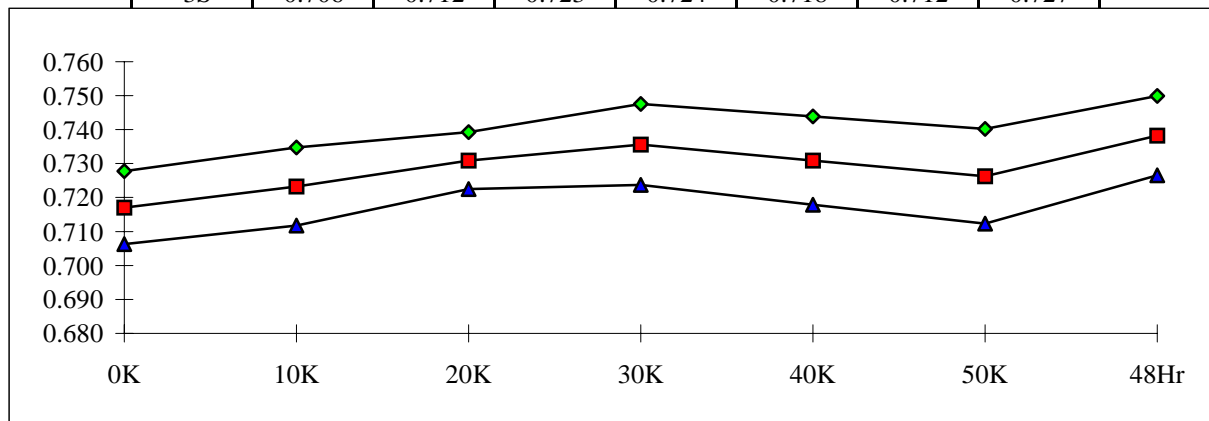




T# 35	VOL3, VCM=13V [MIL T#24]						V
SN	0K	10K	20K	30K	40K	50K	48Hr
1	0.756	0.754	0.753	0.754	0.753	0.754	0.754
2	0.751	0.758	0.768	0.777	0.772	0.765	0.778
3	0.751	0.758	0.770	0.775	0.771	0.763	0.779
4	0.739	0.747	0.758	0.764	0.754	0.748	0.764
5	0.743	0.753	0.765	0.773	0.767	0.760	0.776
6	0.751	0.756	0.764	0.771	0.764	0.758	0.771
min	0.739	0.747	0.758	0.764	0.754	0.748	0.764
max	0.751	0.758	0.770	0.777	0.772	0.765	0.779
stdev	0.006	0.004	0.005	0.005	0.007	0.007	0.006
mean	0.747	0.754	0.765	0.772	0.766	0.759	0.774
+3S	0.764	0.767	0.779	0.787	0.787	0.779	0.792
-3S	0.730	0.741	0.751	0.757	0.744	0.739	0.755



T# 36	VOL4@ VCM=0V, VS=+-15V, IO=50MA, VIN=-5MV						V
SN	0K	10K	20K	30K	40K	50K	48Hr
1	0.724	0.720	0.720	0.722	0.720	0.724	0.721
2	0.720	0.726	0.734	0.741	0.736	0.732	0.742
3	0.718	0.724	0.732	0.735	0.732	0.726	0.740
4	0.712	0.717	0.726	0.730	0.724	0.719	0.732
5	0.715	0.724	0.731	0.736	0.731	0.728	0.740
6	0.720	0.725	0.731	0.736	0.731	0.726	0.737
min	0.712	0.717	0.726	0.730	0.724	0.719	0.732
max	0.720	0.726	0.734	0.741	0.736	0.732	0.742
stdev	0.004	0.004	0.003	0.004	0.004	0.005	0.004
mean	0.717	0.723	0.731	0.736	0.731	0.726	0.738
+3S	0.728	0.735	0.739	0.748	0.744	0.740	0.750
-3S	0.706	0.712	0.723	0.724	0.718	0.712	0.727



T# 37	ISC, VS=+-15V [MIL T#31]						MA
SN	0K	10K	20K	30K	40K	50K	48Hr
1	80.67	78.81	78.56	78.43	78.36	78.34	82.27
2	80.98	79.55	78.95	79.26	80.16	82.46	84.61
3	80.75	79.20	78.67	78.86	79.39	80.64	83.71
4	81.61	80.34	79.51	79.42	82.03	85.52	85.27
5	82.10	80.66	80.27	80.31	81.62	83.30	85.33
6	81.61	80.33	80.01	80.06	82.26	84.98	86.05
min	80.8	79.2	78.7	78.9	79.4	80.6	83.7
max	82.1	80.7	80.3	80.3	82.3	85.5	86.0
stdev	0.5	0.6	0.7	0.6	1.3	2.0	0.9
mean	81.4	80.0	79.5	79.6	81.1	83.4	85.0
+3S	83.0	81.8	81.5	81.4	84.9	89.3	87.6
-3S	79.8	78.2	77.4	77.8	77.3	77.5	82.4

