



AHEAD OF WHAT'S POSSIBLE™

HIGH DOSE RADIATION TEST REPORT OP37S

September 2008
Generic



Radiation Test Report	
Product:	OP37S
Gamma:	0, 30k, 50k, 100k, 24Hr
Gamma Source:	Co60/TM1019 Condition A
Dose Rate:	194 Rad/s
Facilities:	UMass @ Lowell
Tested:	September 16th, 2008

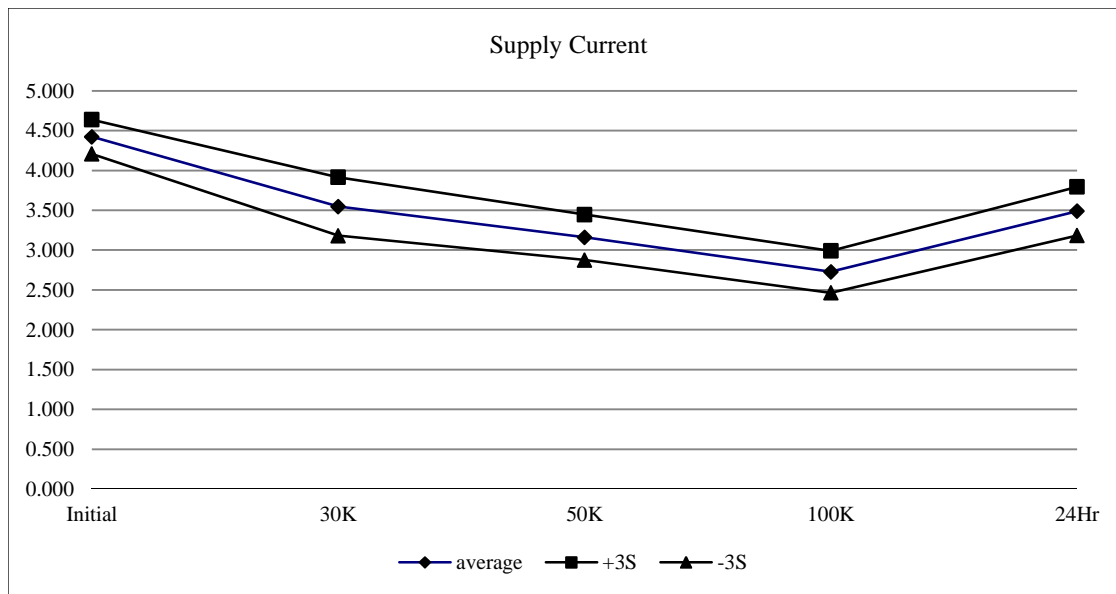
The RADTEST® DATA SERVICE is a compilation of radiation test results on Analog Devices' Space grade products. It is designed to assist customers in selecting the right product for applications where radiation is a consideration. Many products manufactured by Analog Devices, Inc. have been shown to be radiation tolerant to most tactical radiation environments. Analog Devices, Inc. does not make any claim to maintain or guarantee these levels of radiation tolerance without lot qualification test.

It is the responsibility of the Procuring Activity to screen products from Analog Devices, Inc. for compliance to Nuclear Hardness Critical Items (HCI) specifications.

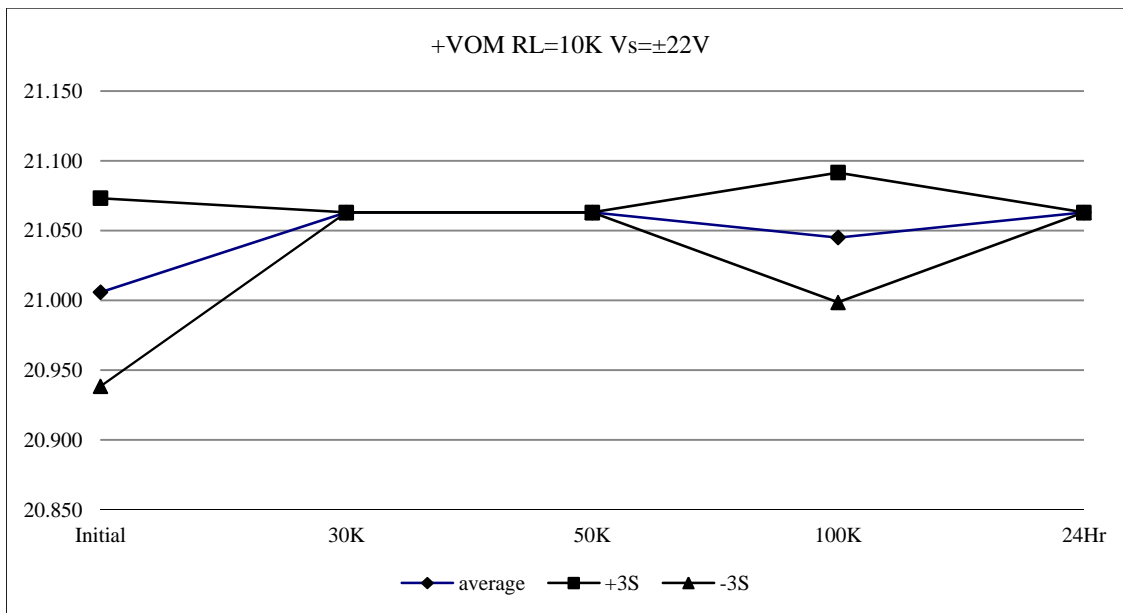
Warning:

Analog Devices, Inc. does not recommend use of this data to qualify other product grades or process levels. Analog Devices, Inc. is not responsible and has no liability for any consequences, and all applicable Warranties are null and void if any Analog Devices product is modified in any way or used outside of normal environmental and operating conditions, including the parameters specified in the corresponding data sheet. Analog Devices, Inc. does not guarantee that wafer manufacturing is the same for all process levels.

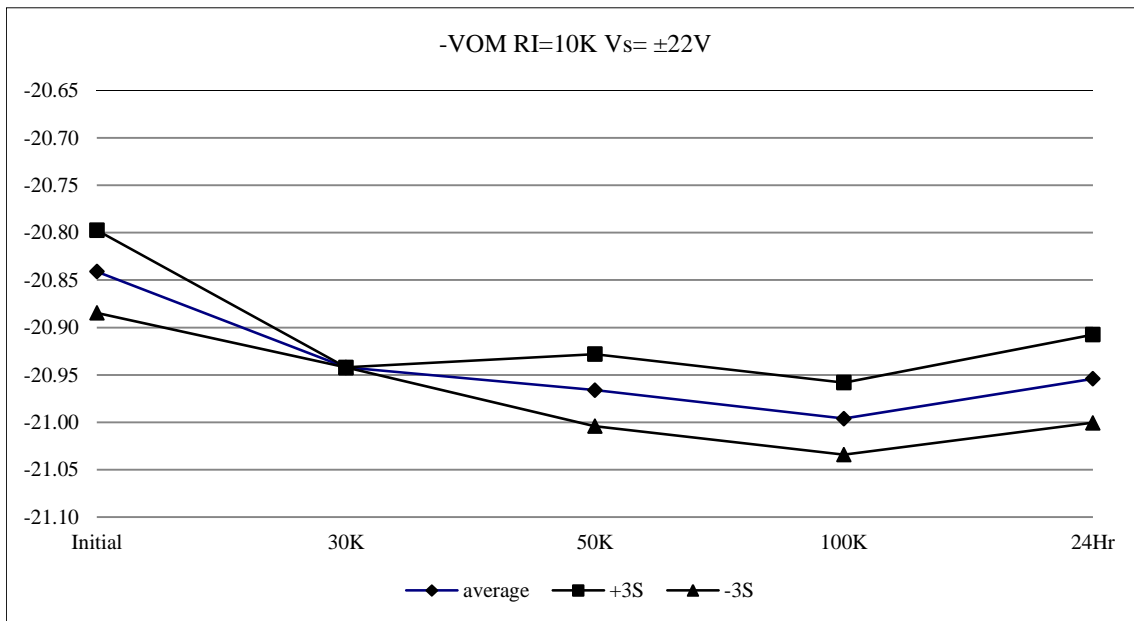
T# 1	ISY				mA
SN	Initial	30K	50K	100K	24Hr
491	4.464	4.452	4.456	4.453	4.451
495	4.472	3.566	3.166	2.752	3.541
502	4.326	3.350	3.013	2.581	3.322
505	4.431	3.479	3.125	2.703	3.462
509	4.401	3.600	3.201	2.753	3.484
510	4.389	3.706	3.321	2.847	3.465
512	4.352	3.397	3.055	2.633	3.397
514	4.556	3.729	3.283	2.847	3.678
516	4.361	3.509	3.111	2.661	3.434
522	4.447	3.526	3.136	2.705	3.495
523	4.499	3.616	3.205	2.787	3.607
min	4.326	3.350	3.013	2.581	3.322
max	4.556	3.729	3.321	2.847	3.678
stdev	0.072	0.122	0.095	0.088	0.102
average	4.423	3.548	3.162	2.727	3.489
+3S	4.639	3.914	3.447	2.990	3.794
-3S	4.208	3.182	2.876	2.464	3.183



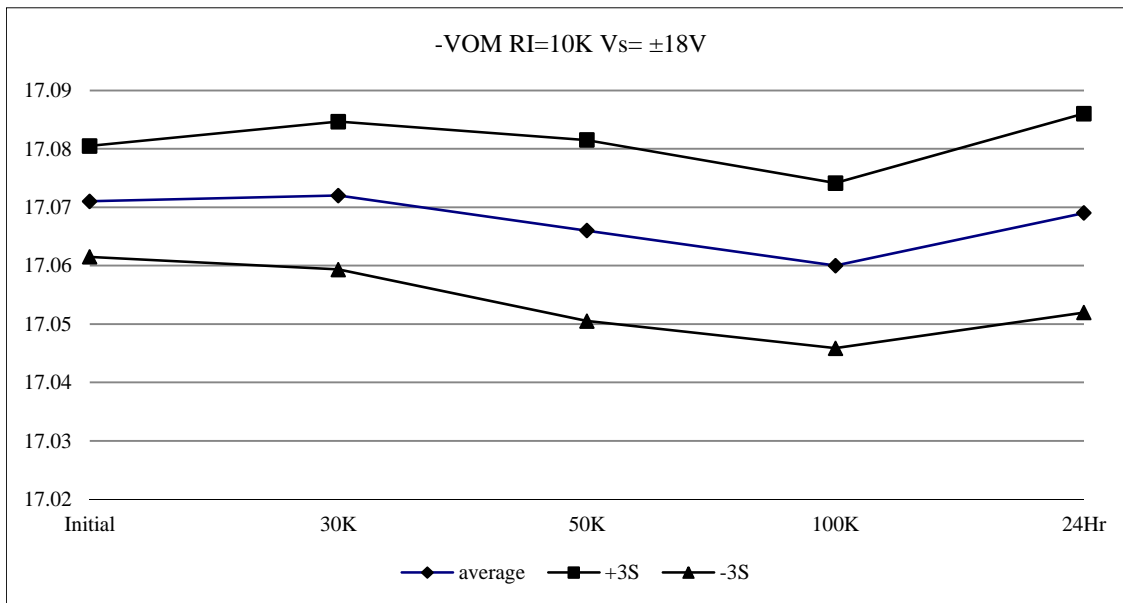
T# 2	+VOM RL=10K Vs=±22V				V
SN	Initial	30K	50K	100K	24Hr
491	20.972	20.972	20.972	20.972	20.972
495	21.003	21.063	21.063	21.063	21.063
502	21.033	21.063	21.063	21.033	21.063
505	20.972	21.063	21.063	21.033	21.063
509	21.003	21.063	21.063	21.033	21.063
510	21.003	21.063	21.063	21.033	21.063
512	20.972	21.063	21.063	21.033	21.063
514	21.003	21.063	21.063	21.063	21.063
516	21.003	21.063	21.063	21.033	21.063
522	21.033	21.063	21.063	21.063	21.063
523	21.033	21.063	21.063	21.063	21.063
min	20.97	21.06	21.06	21.03	21.06
max	21.03	21.06	21.06	21.06	21.06
stdev	0.02	0.00	0.00	0.02	0.00
average	21.006	21.063	21.063	21.045	21.063
+3S	21.073	21.063	21.063	21.091	21.063
-3S	20.938	21.063	21.063	20.999	21.063



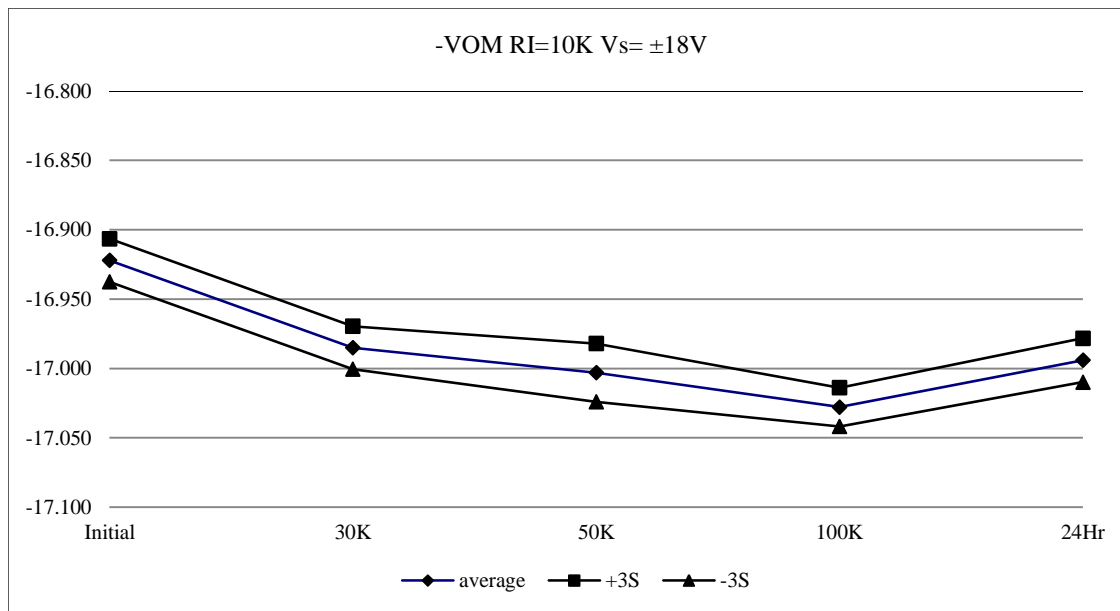
T# 3	-VOM RI=10K Vs=+/-22V				V
SN	Initial	30K	50K	100K	24Hr
491	-20.85	-20.85	-20.85	-20.85	-20.85
495	-20.85	-20.942	-20.972	-21.002	-20.942
502	-20.85	-20.942	-20.972	-21.002	-20.972
505	-20.85	-20.942	-20.972	-21.002	-20.972
509	-20.85	-20.942	-20.972	-21.002	-20.942
510	-20.85	-20.942	-20.942	-20.972	-20.942
512	-20.82	-20.942	-20.972	-21.002	-20.972
514	-20.82	-20.942	-20.942	-20.972	-20.942
516	-20.85	-20.942	-20.972	-21.002	-20.972
522	-20.85	-20.942	-20.972	-21.002	-20.942
523	-20.82	-20.942	-20.972	-21.002	-20.942
min	-20.85	-20.94	-20.97	-21.00	-20.97
max	-20.82	-20.94	-20.94	-20.97	-20.94
stdev	0.01	0.00	0.01	0.01	0.02
average	-20.84	-20.94	-20.97	-21.00	-20.95
+3S	-20.80	-20.94	-20.93	-20.96	-20.91
-3S	-20.88	-20.94	-21.00	-21.03	-21.00



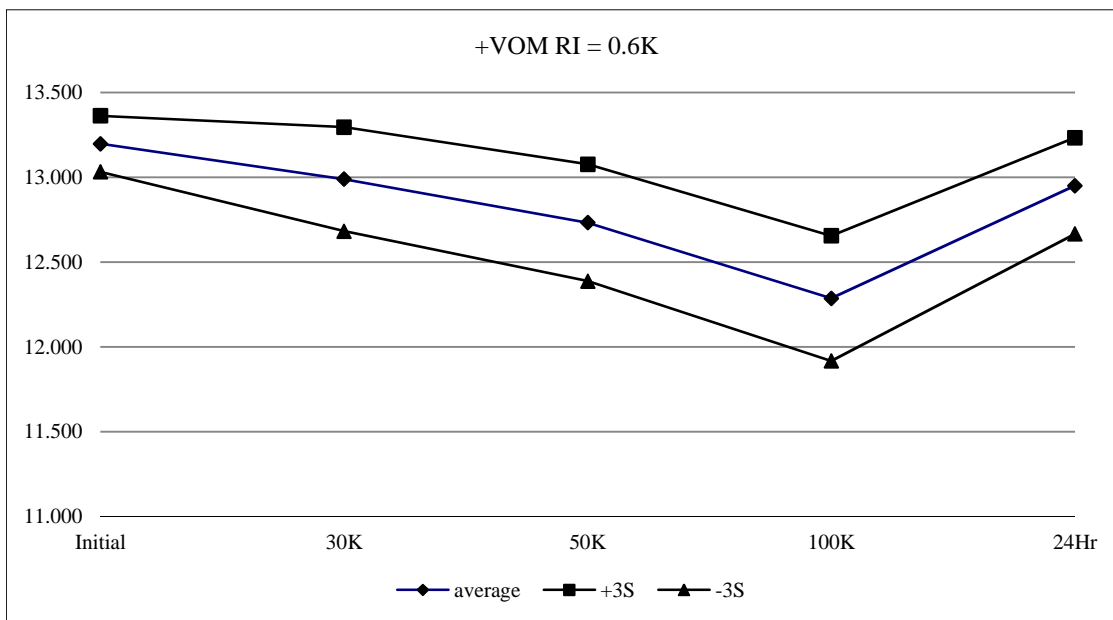
T# 4	+VOM RI=10K Vs=+/-18V				V
SN	Initial	30K	50K	100K	24Hr
491	17.07	17.07	17.07	17.06	17.07
495	17.07	17.07	17.07	17.06	17.07
502	17.07	17.07	17.06	17.06	17.06
505	17.07	17.07	17.07	17.06	17.07
509	17.07	17.07	17.07	17.06	17.07
510	17.07	17.07	17.06	17.06	17.07
512	17.07	17.07	17.06	17.06	17.07
514	17.07	17.08	17.07	17.07	17.07
516	17.07	17.07	17.06	17.05	17.06
522	17.07	17.07	17.07	17.06	17.07
523	17.08	17.08	17.07	17.06	17.08
min	17.07	17.07	17.06	17.05	17.06
max	17.08	17.08	17.07	17.07	17.08
stdev	0.00	0.00	0.01	0.00	0.01
average	17.07	17.07	17.07	17.06	17.07
+3S	17.08	17.08	17.08	17.07	17.09
-3S	17.06	17.06	17.05	17.05	17.05



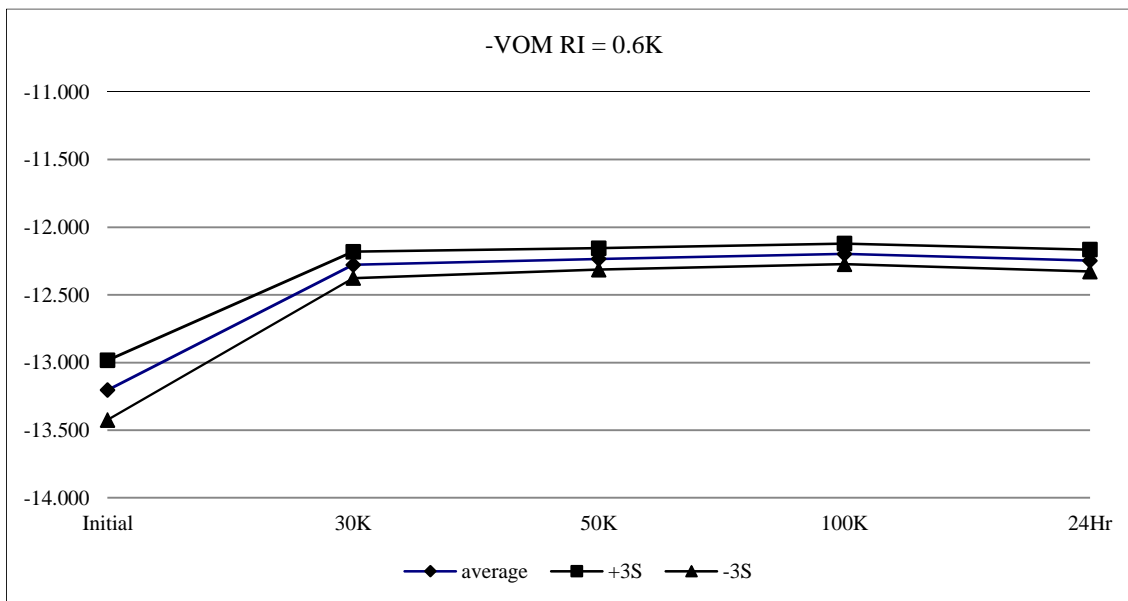
T# 5	-VOM RI=10K Vs=+/-18V				V
	Initial	30K	50K	100K	24Hr
491	-16.918	-16.918	-16.918	-16.918	-16.918
495	-16.918	-16.989	-17.009	-17.030	-16.999
502	-16.928	-16.989	-17.009	-17.030	-16.999
505	-16.928	-16.989	-17.009	-17.030	-16.999
509	-16.918	-16.979	-16.999	-17.030	-16.989
510	-16.918	-16.979	-16.989	-17.019	-16.989
512	-16.928	-16.989	-17.009	-17.030	-16.999
514	-16.918	-16.979	-16.999	-17.019	-16.989
516	-16.928	-16.989	-17.009	-17.030	-16.999
522	-16.918	-16.989	-16.999	-17.030	-16.989
523	-16.918	-16.979	-16.999	-17.030	-16.989
min	-16.928	-16.989	-17.009	-17.030	-16.999
max	-16.918	-16.979	-16.989	-17.019	-16.989
stdev	0.005	0.005	0.007	0.005	0.005
average	-16.922	-16.985	-17.003	-17.028	-16.994
+3S	-16.907	-16.970	-16.982	-17.014	-16.978
-3S	-16.937	-17.000	-17.024	-17.042	-17.010



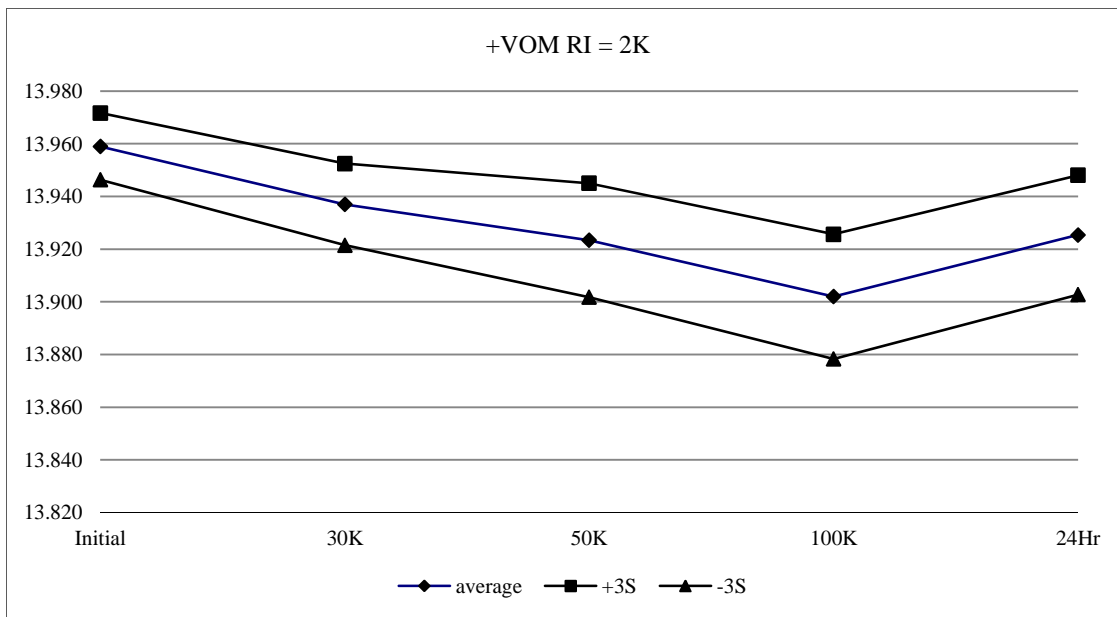
T# 6	+VOM RI=0.6K				V
SN	Initial	30K	50K	100K	24Hr
491	13.168	13.168	13.158	13.158	13.168
495	13.209	13.016	12.742	12.345	12.965
502	13.179	12.904	12.610	12.081	12.853
505	13.158	12.864	12.589	12.132	12.843
509	13.270	13.128	12.894	12.467	13.087
510	13.199	13.077	12.874	12.427	12.975
512	13.250	13.047	12.772	12.254	13.036
514	13.148	12.945	12.701	12.335	12.914
516	13.280	13.118	12.853	12.305	13.077
522	13.118	12.853	12.599	12.193	12.833
523	13.158	12.935	12.691	12.325	12.914
min	13.118	12.853	12.589	12.081	12.833
max	13.280	13.128	12.894	12.467	13.087
stdev	0.055	0.102	0.115	0.123	0.094
average	13.197	12.989	12.733	12.286	12.950
+3S	13.362	13.295	13.077	12.655	13.233
-3S	13.032	12.682	12.388	11.918	12.666



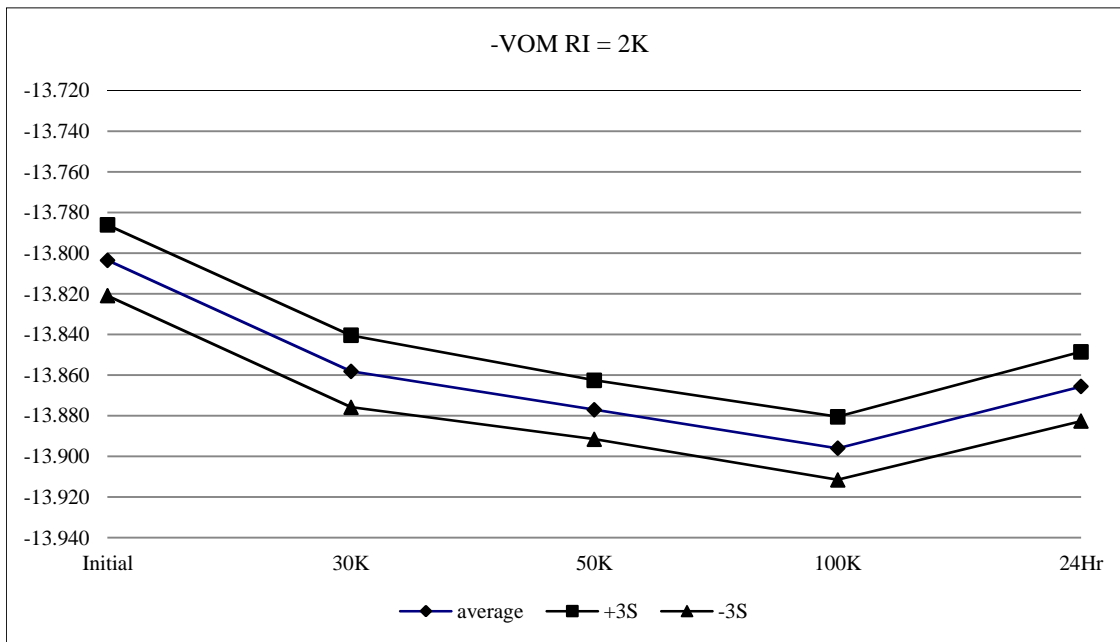
T# 7	-VOM RI=0.6K				V
SN	Initial	30K	50K	100K	24Hr
491	-13.199	-13.199	-13.189	-13.199	-13.199
495	-13.229	-12.284	-12.234	-12.203	-12.244
502	-13.179	-12.254	-12.224	-12.183	-12.234
505	-13.168	-12.254	-12.224	-12.183	-12.234
509	-13.280	-12.315	-12.264	-12.224	-12.274
510	-13.240	-12.295	-12.244	-12.213	-12.254
512	-13.280	-12.315	-12.264	-12.224	-12.284
514	-13.158	-12.254	-12.213	-12.173	-12.224
516	-13.290	-12.325	-12.274	-12.234	-12.284
522	-13.057	-12.234	-12.193	-12.163	-12.203
523	-13.158	-12.254	-12.213	-12.173	-12.234
min	-13.290	-12.325	-12.274	-12.234	-12.284
max	-13.057	-12.234	-12.193	-12.163	-12.203
stdev	0.074	0.033	0.026	0.025	0.027
average	-13.204	-12.278	-12.235	-12.197	-12.247
+3S	-12.983	-12.181	-12.156	-12.121	-12.166
-3S	-13.424	-12.376	-12.314	-12.274	-12.328



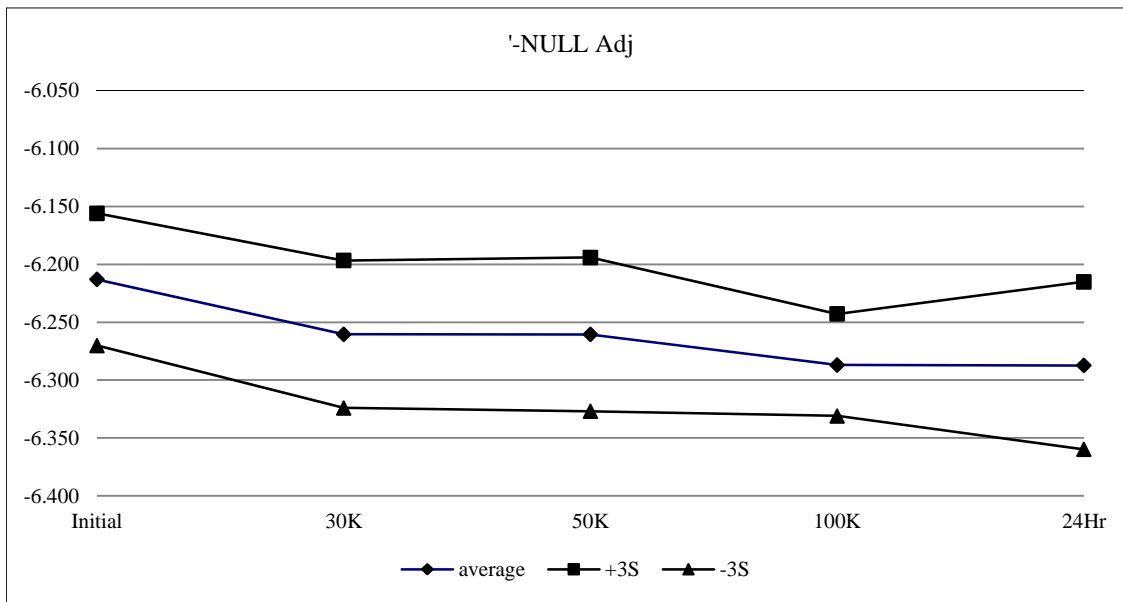
T# 8	+VOM RI=2K				V
SN	Initial	30K	50K	100K	24Hr
491	13.951	13.951	13.951	13.951	13.951
495	13.961	13.941	13.931	13.910	13.931
502	13.951	13.931	13.910	13.890	13.920
505	13.951	13.931	13.920	13.890	13.920
509	13.961	13.941	13.931	13.910	13.931
510	13.961	13.941	13.920	13.900	13.920
512	13.961	13.931	13.920	13.900	13.920
514	13.961	13.941	13.931	13.910	13.941
516	13.961	13.931	13.920	13.900	13.920
522	13.961	13.941	13.920	13.900	13.920
523	13.961	13.941	13.931	13.910	13.931
min	13.951	13.931	13.910	13.890	13.920
max	13.961	13.941	13.931	13.910	13.941
stdev	0.004	0.005	0.007	0.008	0.008
average	13.959	13.937	13.923	13.902	13.925
+3S	13.972	13.952	13.945	13.926	13.948
-3S	13.946	13.922	13.902	13.878	13.903



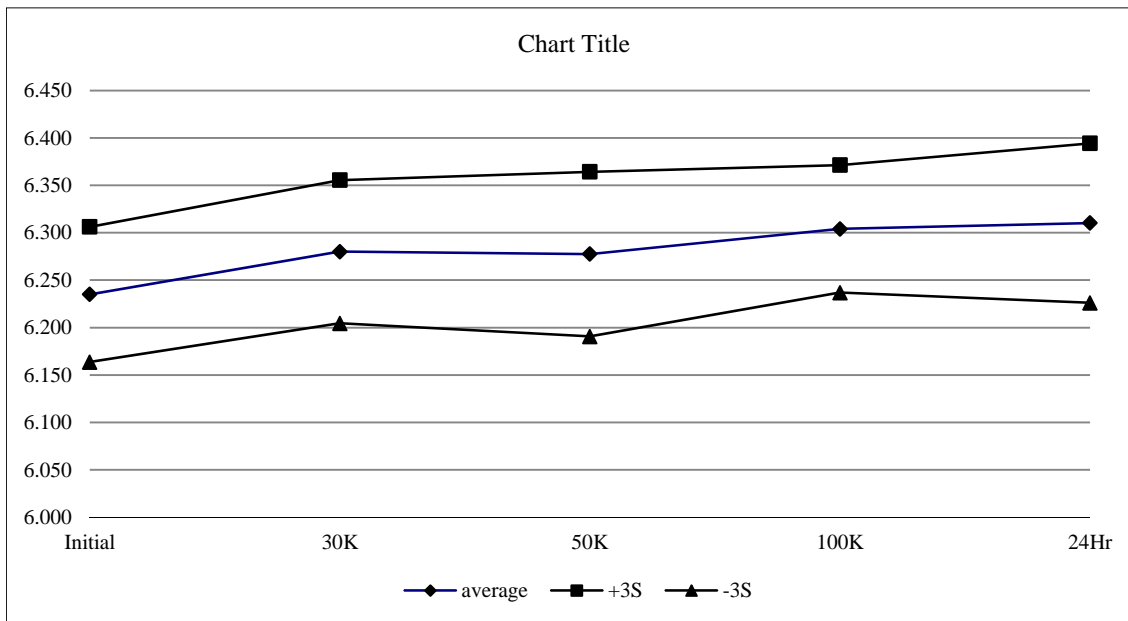
T# 9	-VOM RI=2K				V
SN	Initial	30K	50K	100K	24Hr
491	-13.798	-13.798	-13.798	-13.798	-13.798
495	-13.798	-13.859	-13.880	-13.900	-13.870
502	-13.809	-13.859	-13.880	-13.900	-13.870
505	-13.809	-13.859	-13.880	-13.900	-13.870
509	-13.809	-13.859	-13.880	-13.900	-13.870
510	-13.798	-13.849	-13.870	-13.890	-13.859
512	-13.809	-13.870	-13.880	-13.900	-13.870
514	-13.798	-13.849	-13.870	-13.890	-13.859
516	-13.809	-13.859	-13.880	-13.900	-13.870
522	-13.798	-13.859	-13.870	-13.890	-13.859
523	-13.798	-13.859	-13.880	-13.890	-13.859
min	-13.809	-13.870	-13.880	-13.900	-13.870
max	-13.798	-13.849	-13.870	-13.890	-13.859
stdev	0.006	0.006	0.005	0.005	0.006
average	-13.804	-13.858	-13.877	-13.896	-13.866
+3S	-13.786	-13.840	-13.863	-13.881	-13.849
-3S	-13.821	-13.876	-13.891	-13.911	-13.883



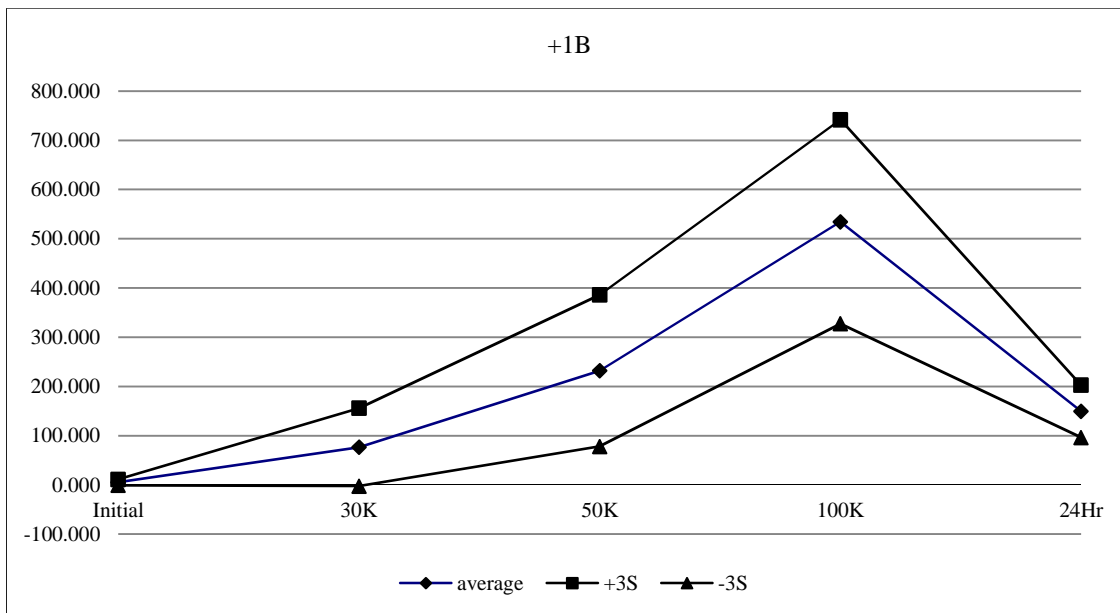
T# 10	'-NULL Adj.				mV
	Initial	30K	50K	100K	24Hr
491	-6.203	-6.191	-6.216	-6.191	-6.203
495	-6.203	-6.252	-6.276	-6.288	-6.301
502	-6.191	-6.228	-6.240	-6.276	-6.264
505	-6.228	-6.288	-6.301	-6.325	-6.325
509	-6.216	-6.264	-6.276	-6.276	-6.301
510	-6.203	-6.252	-6.228	-6.276	-6.264
512	-6.191	-6.240	-6.240	-6.288	-6.264
514	-6.228	-6.276	-6.264	-6.288	-6.301
516	-6.203	-6.240	-6.252	-6.276	-6.252
522	-6.252	-6.288	-6.276	-6.288	-6.301
523	-6.216	-6.276	-6.252	-6.288	-6.301
min	-6.252	-6.288	-6.301	-6.325	-6.325
max	-6.191	-6.228	-6.228	-6.276	-6.252
stdev	0.019	0.021	0.022	0.015	0.024
average	-6.213	-6.260	-6.261	-6.287	-6.287
+3S	-6.156	-6.197	-6.194	-6.243	-6.215
-3S	-6.270	-6.324	-6.327	-6.331	-6.360



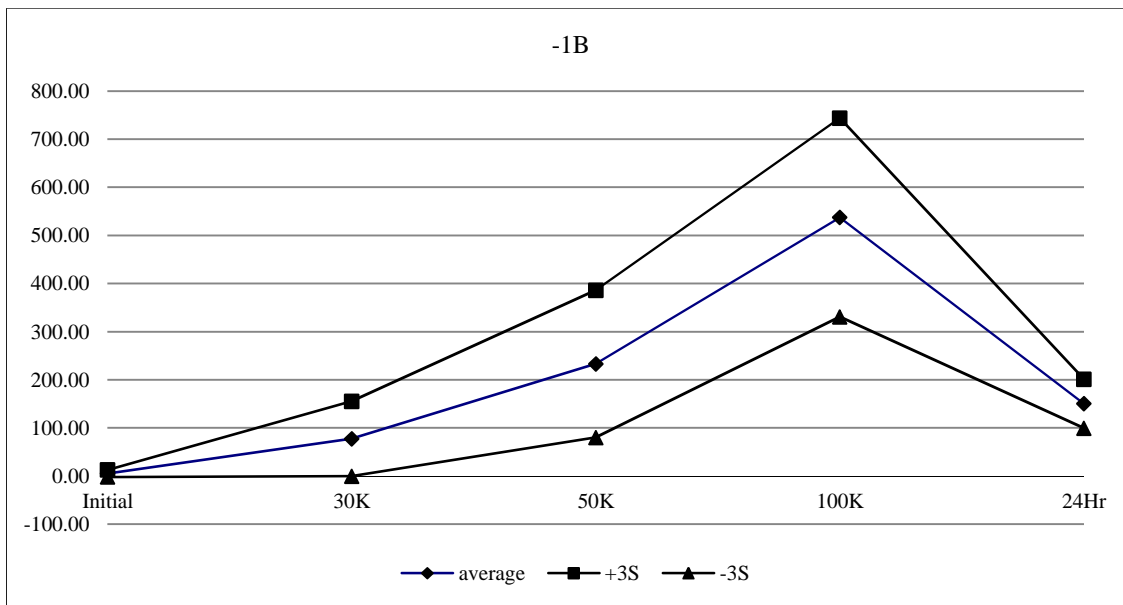
T# 11	+NULL Adj.				mV
	Initial	30K	50K	100K	24Hr
491	6.216	6.203	6.203	6.203	6.203
495	6.216	6.252	6.276	6.288	6.313
502	6.203	6.252	6.252	6.288	6.276
505	6.252	6.313	6.313	6.325	6.349
509	6.252	6.301	6.325	6.337	6.337
510	6.228	6.252	6.252	6.276	6.276
512	6.203	6.264	6.240	6.288	6.288
514	6.228	6.276	6.252	6.288	6.301
516	6.240	6.276	6.276	6.301	6.288
522	6.276	6.313	6.301	6.337	6.337
523	6.252	6.301	6.288	6.313	6.337
min	6.203	6.252	6.240	6.276	6.276
max	6.276	6.313	6.325	6.337	6.349
stdev	0.024	0.025	0.029	0.022	0.028
average	6.235	6.280	6.278	6.304	6.310
+3S	6.306	6.355	6.364	6.371	6.394
-3S	6.164	6.205	6.191	6.237	6.226



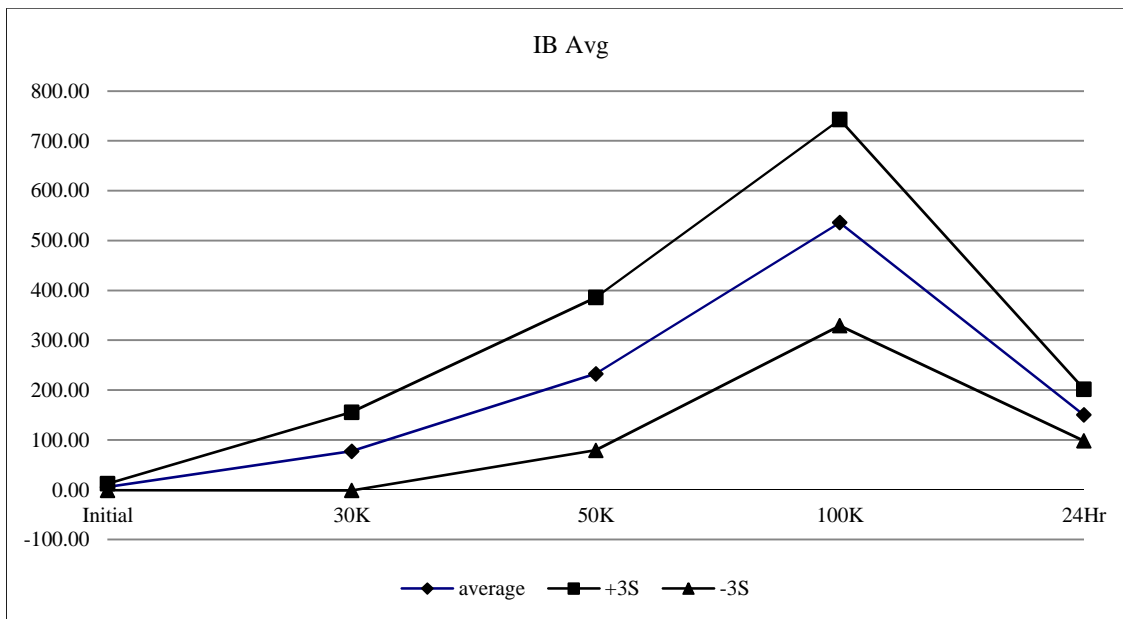
T# 12	+IB				nA
	Initial	30K	50K	100K	24Hr
491	1.188	1.312	1.165	1.216	1.090
495	4.191	104.80	273.4	573.8	158.0
502	5.387	80.35	241.5	566.3	161.3
505	4.932	101.40	276.5	606.9	169.5
509	8.454	59.09	199.1	497.1	145.3
510	2.056	16.82	113.9	385.6	114.2
512	5.393	69.20	210.8	486.0	127.5
514	3.860	81.30	250.4	557.4	154.1
516	8.761	62.78	206.5	489.5	141.0
522	4.501	92.85	276.1	602.2	166.8
523	4.456	97.34	270.5	579.7	157.9
min	2.056	16.82	113.9	385.6	114.2
max	8.761	104.80	276.5	606.9	169.5
stdev	2.032	26.39	51.3	69.1	17.7
average	5.199	76.59	231.9	534.5	149.6
+3S	11.294	155.75	385.7	741.6	202.7
-3S	-0.896	-2.57	78.0	327.3	96.4



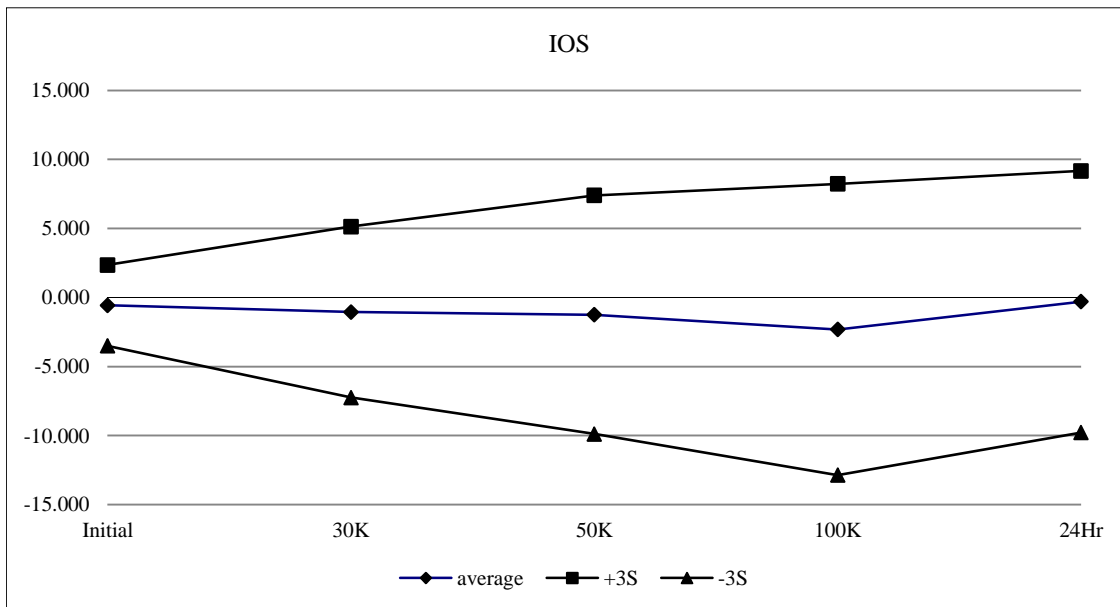
T# 13	-IB				nA
SN	Initial	30K	50K	100K	24Hr
491	1.667	1.658	1.497	1.442	1.421
495	4.288	104.67	274.2	577.9	156.2
502	5.571	81.95	247.0	572.7	166.9
505	4.774	106.20	279.8	613.5	170.8
509	9.68	60.02	201.2	498.8	145.4
510	2.477	18.74	114.5	387.4	116.0
512	7.292	70.54	215.0	493.8	133.2
514	4.519	80.40	246.5	556.4	152.7
516	9.113	66.20	208.2	492.7	140.0
522	2.906	90.88	273.9	599.5	163.1
523	4.666	96.25	271.4	580.4	159.2
min	2.48	18.74	114.5	387.4	116.0
max	9.68	106.20	279.8	613.5	170.8
stdev	2.43	25.94	51.0	68.8	16.9
average	5.53	77.58	233.2	537.3	150.4
+3S	12.83	155.39	386.1	743.8	201.1
-3S	-1.77	-0.23	80.2	330.8	99.6



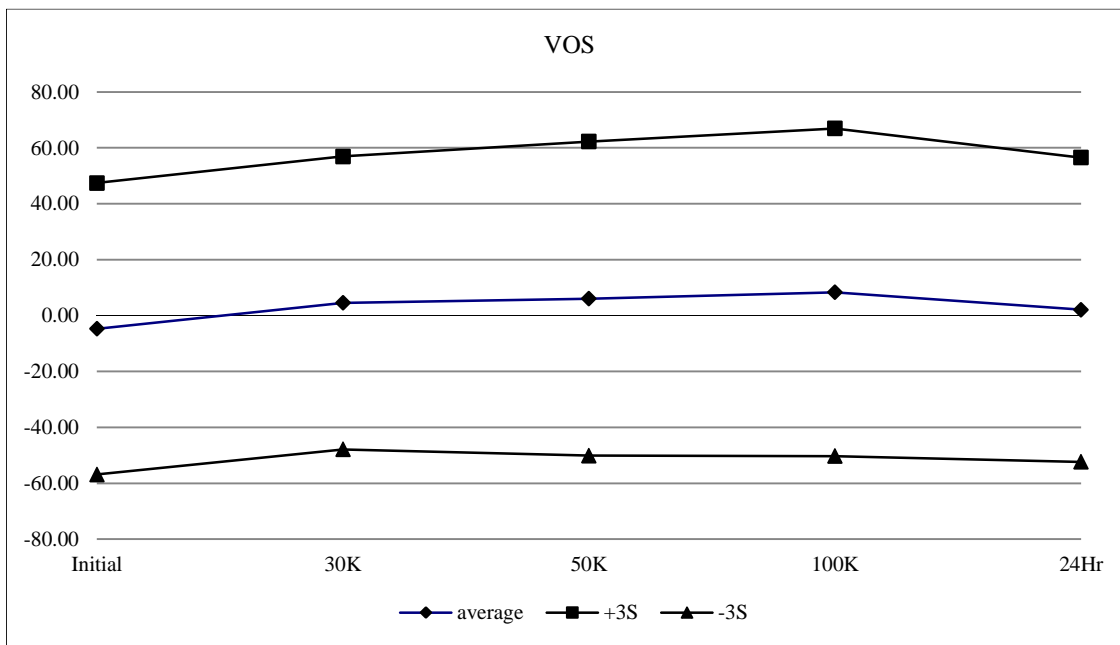
T# 14	IB Avg.				nA
	Initial	30K	50K	100K	24Hr
491	1.428	1.485	1.331	1.329	1.255
495	4.239	104.73	273.8	575.9	157.1
502	5.479	81.15	244.3	569.5	164.1
505	4.853	103.80	278.1	610.2	170.1
509	9.067	59.56	200.1	498.0	145.3
510	2.266	17.78	114.2	386.5	115.1
512	6.342	69.87	212.9	489.9	130.4
514	4.189	80.85	248.5	556.9	153.4
516	8.937	64.49	207.4	491.1	140.5
522	3.704	91.86	275.0	600.8	165.0
523	4.561	96.79	270.9	580.1	158.6
min	2.27	17.78	114.2	386.5	115.1
max	9.07	104.73	278.1	610.2	170.1
stdev	2.19	26.14	51.1	68.9	17.3
average	5.36	77.09	232.5	535.9	150.0
+3S	11.95	155.51	385.9	742.6	201.7
-3S	-1.22	-1.34	79.2	329.1	98.2



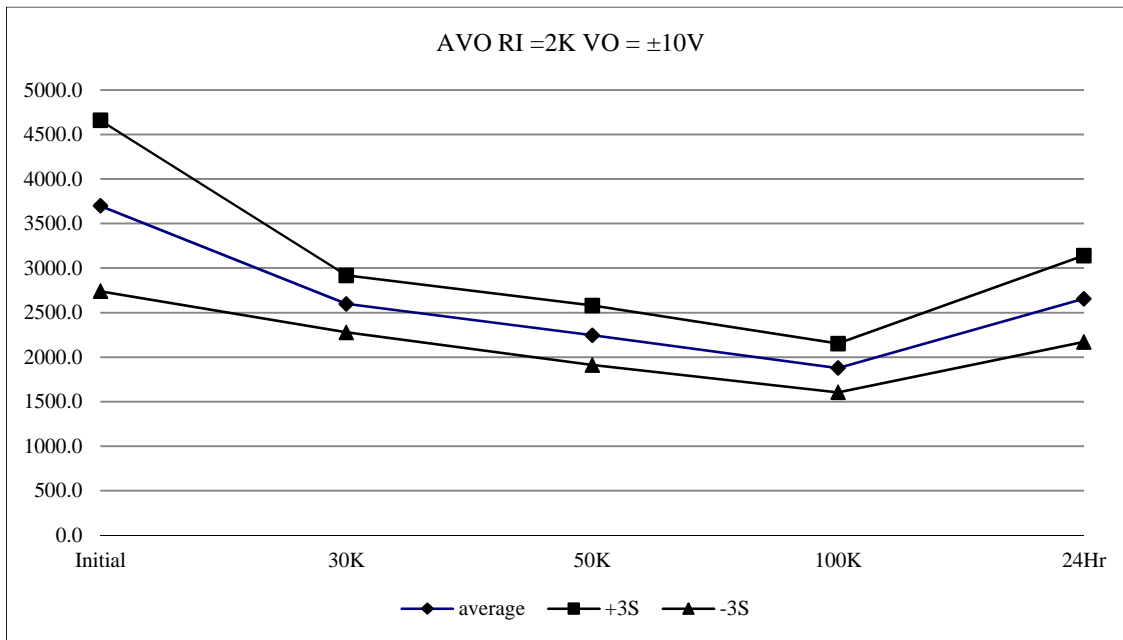
T# 15	IOS				nA
SN	Initial	30K	50K	100K	24Hr
491	-0.665	-0.479	-0.507	-0.507	-0.507
495	-0.305	0.535	-1.079	-2.399	2.133
502	-0.359	-1.439	-5.731	-6.331	-5.077
505	-0.092	-4.744	-3.239	-5.971	-0.479
509	-1.412	-1.439	-2.345	-1.319	0.295
510	-0.599	-1.772	-0.719	-1.559	-1.799
512	-2.399	-1.679	-4.172	-7.264	-5.519
514	-0.905	0.562	3.720	0.988	1.827
516	-0.599	-3.424	-0.932	-3.092	1.653
522	1.440	1.800	2.667	3.987	4.467
523	-0.425	1.080	-0.599	-0.212	-0.518
min	-2.399	-4.744	-5.731	-7.264	-5.519
max	1.440	1.800	3.720	3.987	4.467
stdev	0.976	2.062	2.880	3.515	3.157
average	-0.566	-1.052	-1.243	-2.317	-0.302
+3S	2.362	5.134	7.397	8.228	9.170
-3S	-3.493	-7.238	-9.883	-12.863	-9.774



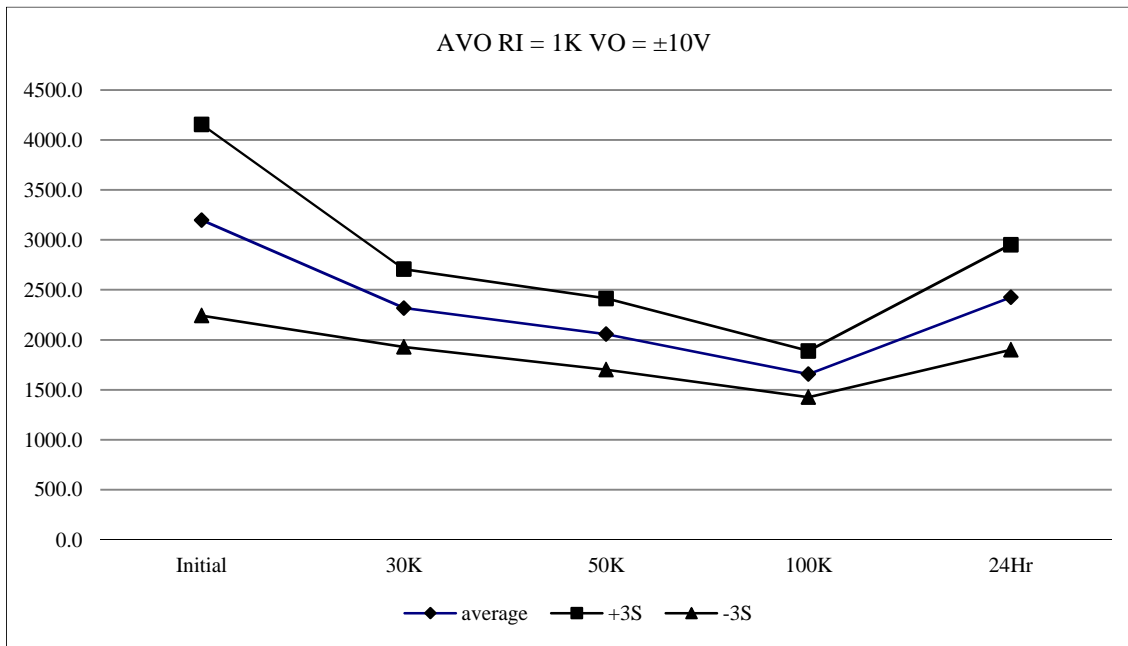
T# 16	VOS				uV
SN	Initial	30K	50K	100K	24Hr
491	23.46	22.55	22.54	22.28	22.70
495	-23.24	-6.85	-4.43	1.77	-9.07
502	-0.18	4.75	6.86	8.45	3.76
505	1.10	13.93	14.24	18.79	11.97
509	-5.77	6.24	8.32	10.95	3.43
510	-26.22	-19.24	-18.52	-17.24	-21.31
512	23.37	33.61	40.59	43.87	33.95
514	20.27	28.22	28.26	29.75	24.43
516	-25.02	-18.33	-19.00	-19.29	-23.39
522	-9.64	3.97	5.71	9.71	-0.41
523	-1.99	-0.95	-1.47	-3.31	-2.30
min	-26.22	-19.24	-19.00	-19.29	-23.39
max	23.37	33.61	40.59	43.87	33.95
stdev	17.38	17.47	18.73	19.54	18.14
average	-4.73	4.53	6.05	8.35	2.11
+3S	47.40	56.93	62.24	66.95	56.54
-3S	-56.87	-47.86	-50.13	-50.26	-52.32



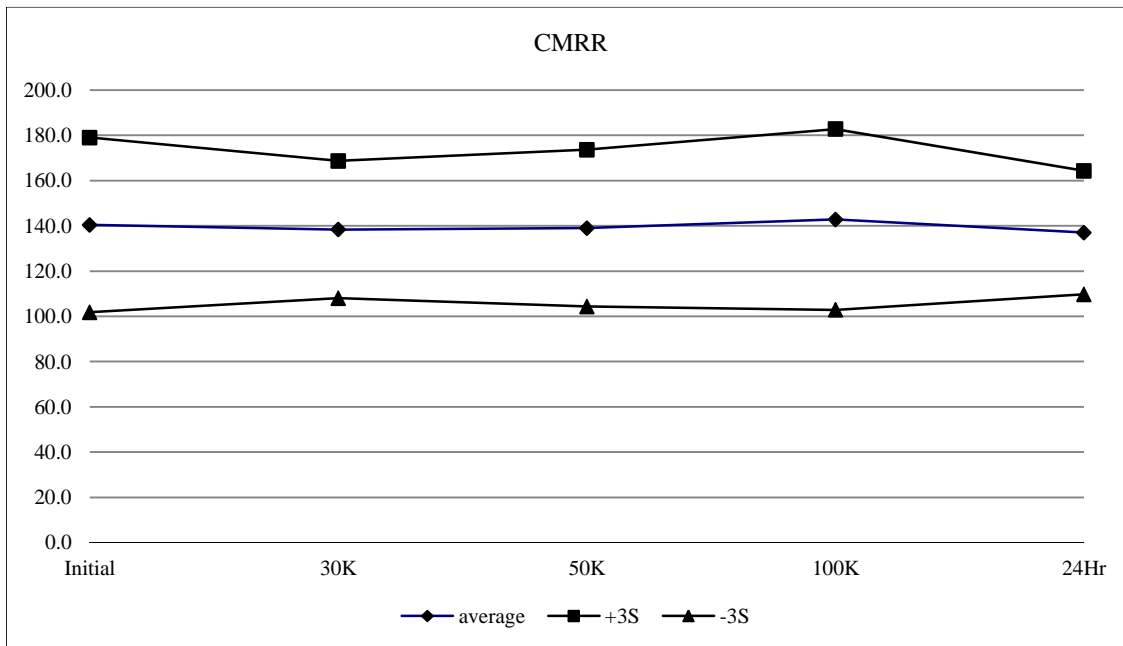
T# 17	AVO RI=2K VO=+/-10V				V/mV
SN	Initial	30K	50K	100K	24Hr
491	3425.9	3569.9	3981.0	3587.0	3786.8
495	4014.3	2641.3	2236.3	1842.9	2686.8
502	3711.5	2674.8	2191.0	1889.0	2676.2
505	4030.7	2521.1	2379.6	1995.4	2933.8
509	3534.5	2638.9	2321.6	1857.6	2588.3
510	3659.0	2645.0	2348.6	2034.6	2641.8
512	4050.8	2717.6	2322.9	1753.5	2664.1
514	3185.1	2483.2	2273.0	1856.2	2656.3
516	3621.7	2567.7	2121.7	1850.3	2562.1
522	3953.9	2704.6	2248.1	1942.8	2826.2
523	3225.7	2386.1	2016.1	1760.2	2318.3
min	3185.1	2386.1	2016.1	1753.5	2318.3
max	4050.8	2717.6	2379.6	2034.6	2933.8
stdev	319.9	106.6	111.6	91.2	161.7
average	3698.7	2598.0	2245.9	1878.2	2655.4
+3S	4658.4	2917.8	2580.8	2151.9	3140.4
-3S	2739.0	2278.3	1911.0	1604.6	2170.4



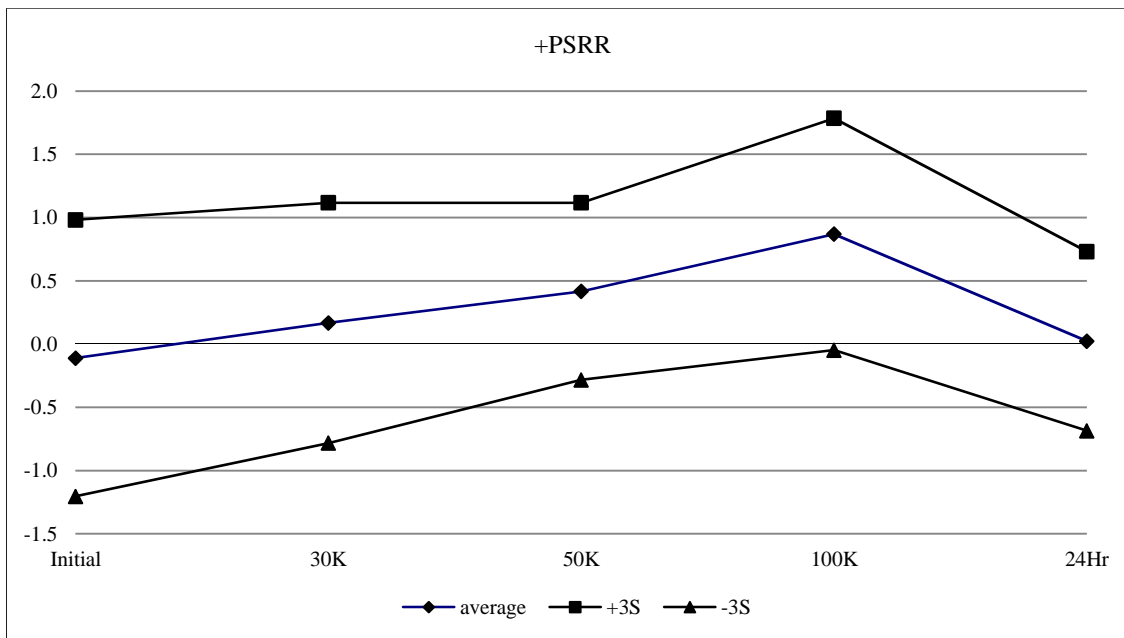
T# 18	AVO RI=1K VO=+/-10V				V/mV
SN	Initial	30K	50K	100K	24Hr
491	3599.9	3589.8	3233.4	3583.9	3468.7
495	3545.0	2442.2	2117.0	1723.2	2673.1
502	3263.1	2233.8	1979.9	1579.4	2304.8
505	3489.7	2456.9	2189.0	1708.7	2521.2
509	3333.1	2380.6	2018.2	1736.0	2533.9
510	3023.7	2477.9	2185.0	1723.5	2229.9
512	3247.9	2277.4	2105.3	1670.8	2575.4
514	3169.8	2246.6	1945.0	1668.1	2249.5
516	2844.0	2121.5	1930.1	1566.5	2387.2
522	3525.8	2395.7	2213.4	1688.7	2596.9
523	2549.2	2150.1	1893.5	1514.8	2187.4
min	2549.2	2121.5	1893.5	1514.8	2187.4
max	3545.0	2477.9	2213.4	1736.0	2673.1
stdev	318.9	129.5	118.8	77.1	175.1
average	3199.1	2318.3	2057.6	1658.0	2425.9
+3S	4155.9	2706.7	2414.0	1889.1	2951.3
-3S	2242.4	1929.9	1701.2	1426.8	1900.5



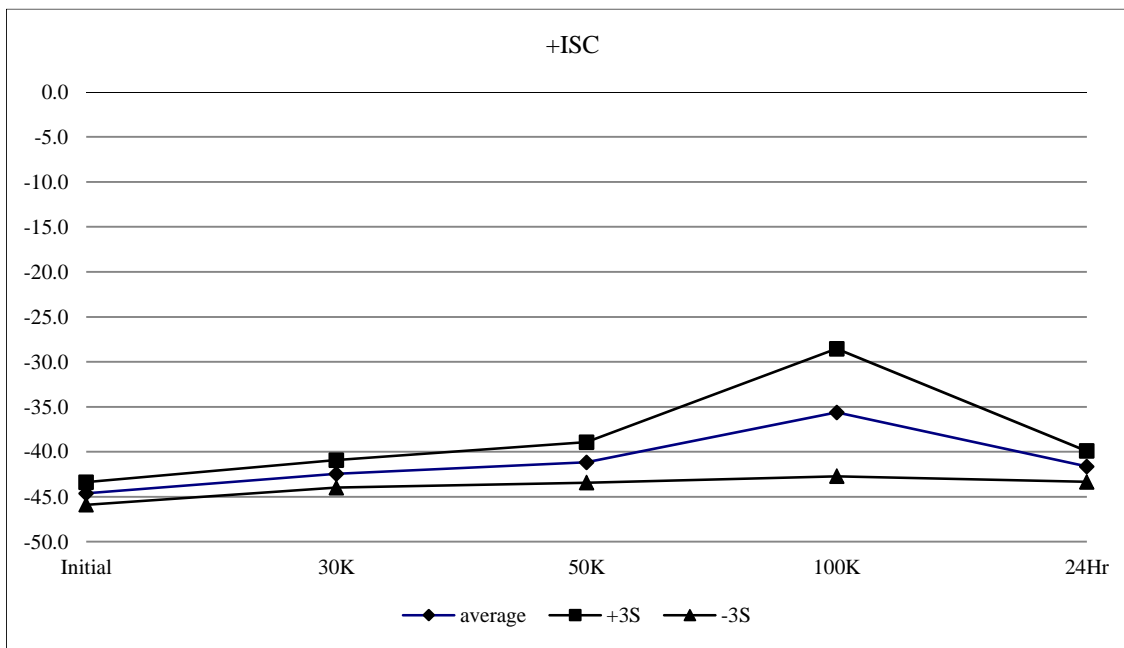
T# 19	CMRR				dB
	Initial	30K	50K	100K	24Hr
SN	165.0	142.1	143.1	154.2	144.2
491	165.0	142.1	143.1	154.2	144.2
495	136.3	138.4	139.0	139.7	137.8
502	151.1	141.2	159.0	154.2	138.4
505	129.2	124.8	132.5	133.1	131.6
509	119.4	124.2	122.5	124.3	123.3
510	147.0	142.8	142.1	142.1	142.1
512	142.1	153.0	145.5	171.1	139.0
514	145.5	143.1	136.3	148.8	154.2
516	165.0	146.5	154.2	142.1	145.5
522	138.4	125.2	126.8	129.2	128.2
523	130.1	144.2	132.2	143.1	129.9
min	119.4	124.2	122.5	124.3	123.3
max	165.0	153.0	159.0	171.1	154.2
stdev	12.9	10.1	11.5	13.3	9.1
average	140.4	138.3	139.0	142.8	137.0
+3S	179.0	168.7	173.7	182.7	164.3
-3S	101.8	108.0	104.4	102.8	109.7



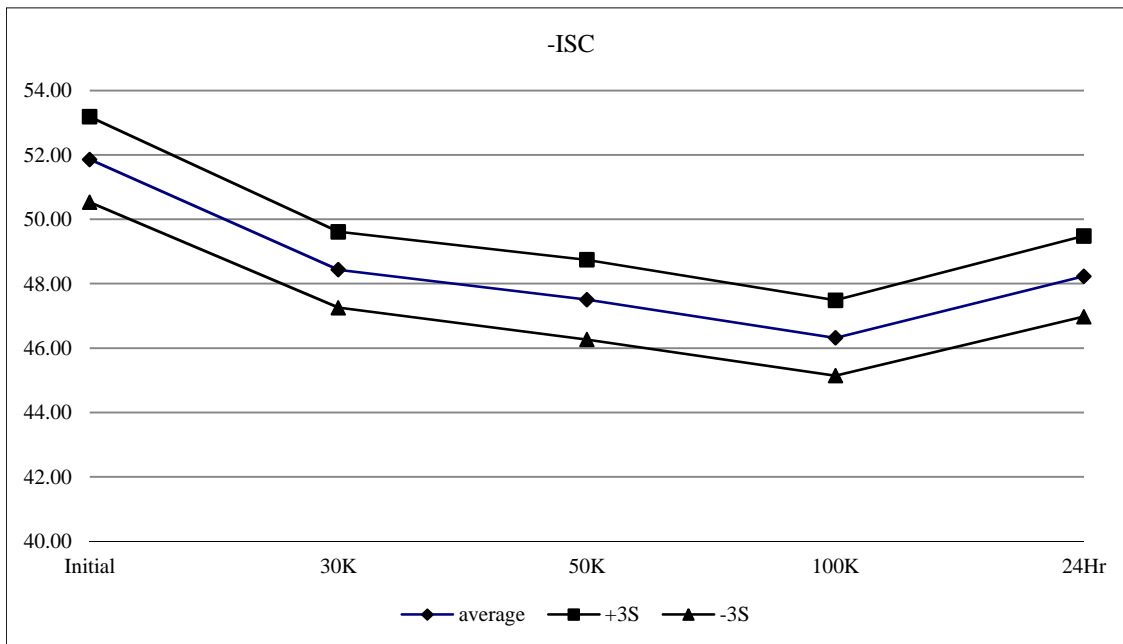
T# 20	+PSRR				uV/V
	Initial	30K	50K	100K	24Hr
491	0.0	0.0	-0.1	0.0	-0.1
495	0.0	0.9	0.8	1.4	0.1
502	0.0	0.0	0.6	1.0	0.2
505	0.0	0.0	0.2	1.0	0.2
509	-1.0	-0.1	0.1	0.2	-0.6
510	-0.1	0.0	0.3	0.8	0.0
512	-0.5	0.2	0.4	1.0	0.1
514	0.1	0.6	0.7	1.1	0.1
516	0.3	0.0	0.6	0.7	0.2
522	0.0	0.0	0.3	0.9	0.0
523	0.1	0.1	0.3	0.7	-0.1
min	-1.0	-0.1	0.1	0.2	-0.6
max	0.3	0.9	0.8	1.4	0.2
stdev	0.4	0.3	0.2	0.3	0.2
average	-0.1	0.2	0.4	0.9	0.0
+3S	1.0	1.1	1.1	1.8	0.7
-3S	-1.2	-0.8	-0.3	0.0	-0.7



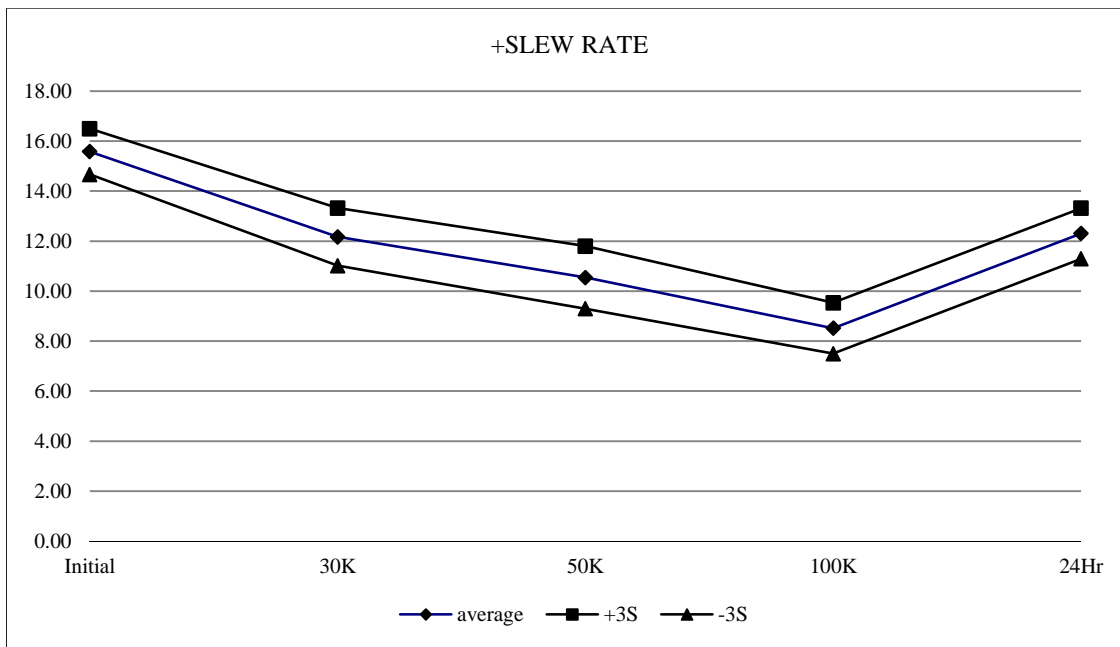
T# 21	+ISC				mA
SN	Initial	30K	50K	100K	24Hr
491	-44.2	-44.3	-44.3	-44.4	-44.3
495	-44.8	-42.9	-41.5	-36.8	-41.9
502	-44.1	-41.6	-39.9	-32.4	-40.6
505	-44.7	-42.1	-40.6	-34.1	-41.3
509	-44.9	-42.8	-41.5	-35.8	-41.9
510	-44.1	-42.2	-41.2	-37.0	-41.1
512	-44.6	-42.2	-40.6	-33.2	-41.4
514	-45.2	-43.2	-42.4	-39.0	-42.6
516	-44.9	-42.5	-40.8	-33.0	-41.7
522	-44.0	-42.1	-41.1	-36.6	-41.5
523	-45.0	-43.1	-42.2	-38.5	-42.3
min	-45.2	-43.2	-42.4	-39.0	-42.6
max	-44.0	-41.6	-39.9	-32.4	-40.6
stdev	0.4	0.5	0.7	2.4	0.6
average	-44.6	-42.5	-41.2	-35.6	-41.6
+3S	-43.4	-40.9	-38.9	-28.5	-39.9
-3S	-45.9	-44.0	-43.4	-42.7	-43.3



T# 22	-ISC				mA
SN	Initial	30K	50K	100K	24Hr
491	51.592	51.713	51.673	51.794	51.713
495	51.875	48.32	47.148	46.138	47.997
502	51.309	47.835	46.865	45.734	47.673
505	52.279	48.522	47.552	46.461	48.401
509	51.956	48.764	47.714	46.542	48.32
510	51.309	48.522	47.633	46.259	47.875
512	51.996	48.522	47.673	46.381	48.481
514	52.441	48.724	47.956	46.663	48.643
516	52.239	48.966	48.037	46.906	48.966
522	51.188	47.714	46.865	45.653	47.714
523	51.996	48.441	47.593	46.421	48.239
min	51.19	47.71	46.87	45.65	47.67
max	52.44	48.97	48.04	46.91	48.97
stdev	0.44	0.39	0.41	0.39	0.42
average	51.86	48.43	47.50	46.32	48.23
+3S	53.19	49.61	48.74	47.49	49.48
-3S	50.53	47.25	46.27	45.15	46.98



T# 23	+SLEW RATE				V/uS
	Initial	30K	50K	100K	24Hr
SN					
491	15.224	15.345	15.304	15.313	15.297
495	15.893	11.98	10.431	8.524	12.387
502	15.071	11.578	9.886	7.909	11.601
505	15.45	11.993	10.298	8.407	12.268
509	15.783	12.514	10.825	8.73	12.3
510	15.34	12.751	11.351	9.079	12.285
512	15.293	11.629	10.113	8.118	11.999
514	15.874	12.54	10.886	8.835	12.806
516	15.792	12.279	10.498	8.427	12.252
522	15.375	12.191	10.482	8.476	12.446
523	15.911	12.264	10.684	8.66	12.698
min	15.07	11.58	9.89	7.91	11.60
max	15.91	12.75	11.35	9.08	12.81
stdev	0.31	0.38	0.42	0.34	0.34
average	15.58	12.17	10.55	8.52	12.30
+3S	16.49	13.32	11.80	9.53	13.32
-3S	14.66	11.02	9.29	7.50	11.29



T# 24	-SLEW RATE				V/uS
	Initial	30K	50K	100K	24Hr
491	14.791	14.645	14.585	14.948	14.771
495	15.199	11.933	10.451	8.477	12.181
502	14.507	11.582	9.864	7.959	11.524
505	14.797	11.827	10.337	8.308	11.952
509	15.108	12.419	10.88	8.716	12.158
510	15.018	12.637	11.281	9.102	11.984
512	14.921	11.621	10.114	8.174	11.863
514	15.432	12.412	10.803	8.755	12.418
516	15.183	12.134	10.494	8.437	12.166
522	14.947	12.11	10.424	8.426	12.072
523	15.168	12.133	10.49	8.566	12.369
min	14.51	11.58	9.86	7.96	11.52
max	15.43	12.64	11.28	9.10	12.42
stdev	0.26	0.35	0.40	0.32	0.26
average	15.03	12.08	10.51	8.49	12.07
+3S	15.79	13.12	11.71	9.45	12.84
-3S	14.26	11.04	9.32	7.53	11.29

