

# HIGH DOSE RADIATION TEST REPORT AMP01S

March 2009

Generic

## Radiation Test Report

Product:	AMP01S
Gamma:	0,30k, 50k, 100k, 24hr
Gamma Source:	Co60/TM1019 Condition A
Dose Rate:	181 Rad/s
Facilities:	U Mass @ Lowell
Tested:	March 10, 2009

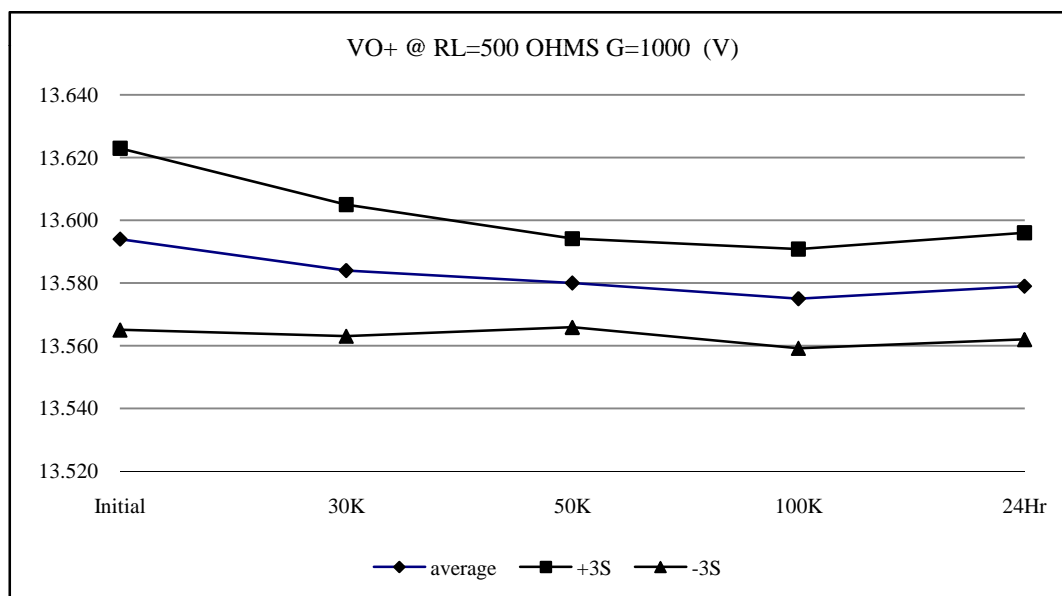
The RADTEST® DATA SERVICE is a compilation of radiation test results on Analog Devices' Space grade products. It is designed to assist customers in selecting the right product for applications where radiation is a consideration. Many products manufactured by Analog Devices, Inc. have been shown to be radiation tolerant to most tactical radiation environments. Analog Devices, Inc. does not make any claim to maintain or guarantee these levels of radiation tolerance without lot qualification test.

It is the responsibility of the Procuring Activity to screen products from Analog Devices, Inc. for compliance to Nuclear Hardness Critical Items (HCI) specifications.

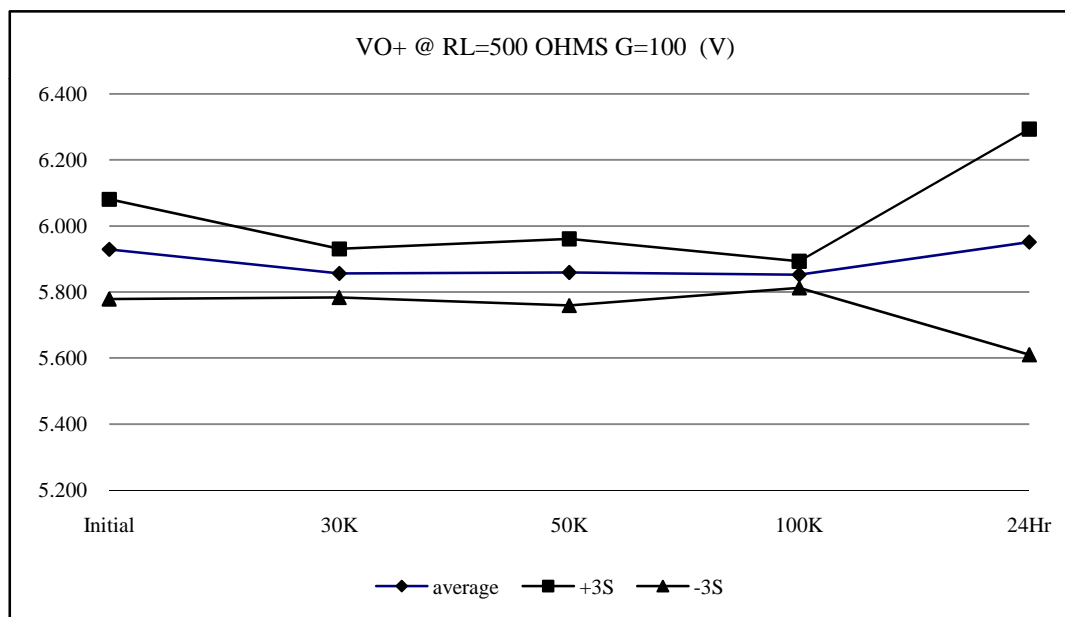
### Warning:

Analog Devices, Inc. does not recommend use of this data to qualify other product grades or process levels. Analog Devices, Inc. is not responsible and has no liability for any consequences, and all applicable Warranties are null and void if any Analog Devices product is modified in any way or used outside of normal environmental and operating conditions, including the parameters specified in the corresponding data sheet. Analog Devices, Inc. does not guarantee that wafer manufacturing is the same for all process levels.

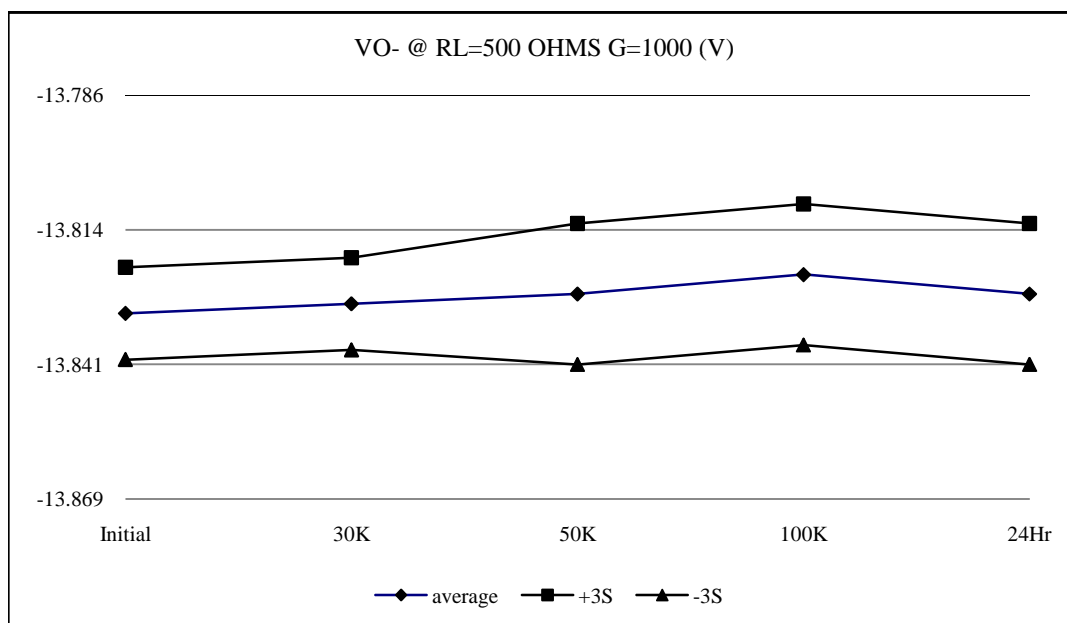
T# 3	VO+ @ RL=500 OHMS G=1000				V
SN	Initial	30K	50K	100K	24Hr
3	13.600	13.600	13.600	13.600	13.600
4	13.590	13.580	13.580	13.570	13.580
5	13.600	13.590	13.590	13.580	13.590
6	13.600	13.590	13.580	13.580	13.580
7	13.600	13.580	13.580	13.570	13.580
8	13.590	13.580	13.580	13.570	13.580
9	13.600	13.590	13.580	13.580	13.580
10	13.590	13.580	13.580	13.570	13.570
13	13.570	13.570	13.570	13.570	13.570
14	13.600	13.590	13.580	13.580	13.580
15	13.600	13.590	13.580	13.580	13.580
min	13.570	13.570	13.570	13.570	13.570
max	13.600	13.590	13.590	13.580	13.590
stdev	0.010	0.007	0.005	0.005	0.006
average	13.594	13.584	13.580	13.575	13.579
+3S	13.623	13.605	13.594	13.591	13.596
-3S	13.565	13.563	13.566	13.559	13.562



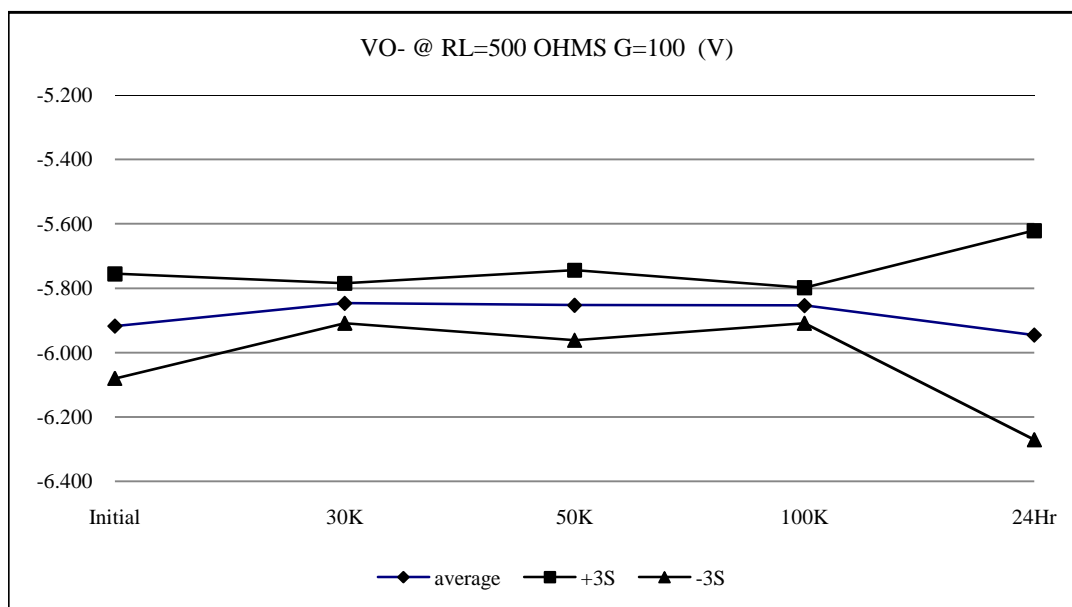
T# 3.1	VO+ @ RL=500 OHMS G=100				V
SN	Initial	30K	50K	100K	24Hr
3	5.910	5.840	5.840	5.880	5.810
4	5.930	5.870	5.870	5.850	5.860
5	5.910	5.850	5.870	5.850	5.850
6	5.920	5.850	5.840	5.860	5.910
7	5.920	5.860	5.890	5.830	6.130
8	5.900	5.840	5.820	5.840	6.100
9	5.900	5.840	5.820	5.860	6.110
10	5.910	5.840	5.840	5.870	5.930
13	5.930	5.840	5.870	5.870	5.890
14	5.910	5.920	5.850	5.840	5.870
15	6.070	5.860	5.930	5.860	5.870
min	5.900	5.840	5.820	5.830	5.850
max	6.070	5.920	5.930	5.870	6.130
stdev	0.050	0.025	0.034	0.013	0.114
average	5.930	5.857	5.860	5.853	5.952
+3S	6.081	5.931	5.961	5.893	6.294
-3S	5.779	5.783	5.759	5.813	5.610



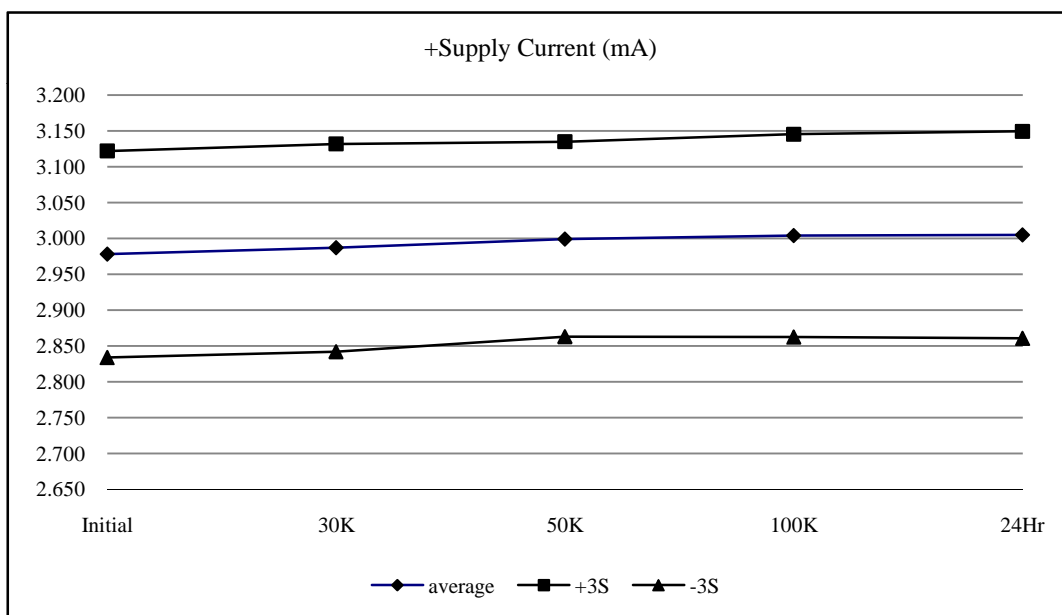
T# 4	VO- @ RL=500 OHMS G=1000				V
SN	Initial	30K	50K	100K	24Hr
3	-13.830	-13.830	-13.830	-13.830	-13.830
4	-13.830	-13.830	-13.830	-13.820	-13.830
5	-13.830	-13.830	-13.830	-13.820	-13.830
6	-13.840	-13.830	-13.830	-13.830	-13.830
7	-13.830	-13.830	-13.830	-13.820	-13.830
8	-13.830	-13.830	-13.830	-13.820	-13.830
9	-13.830	-13.830	-13.830	-13.830	-13.830
10	-13.830	-13.830	-13.820	-13.820	-13.820
13	-13.830	-13.820	-13.820	-13.820	-13.820
14	-13.830	-13.830	-13.820	-13.820	-13.820
15	-13.830	-13.830	-13.830	-13.830	-13.830
min	-13.840	-13.830	-13.830	-13.830	-13.830
max	-13.830	-13.820	-13.820	-13.820	-13.820
stdev	0.003	0.003	0.005	0.005	0.005
average	-13.831	-13.829	-13.827	-13.823	-13.827
+3S	-13.822	-13.820	-13.813	-13.809	-13.813
-3S	-13.840	-13.838	-13.841	-13.837	-13.841



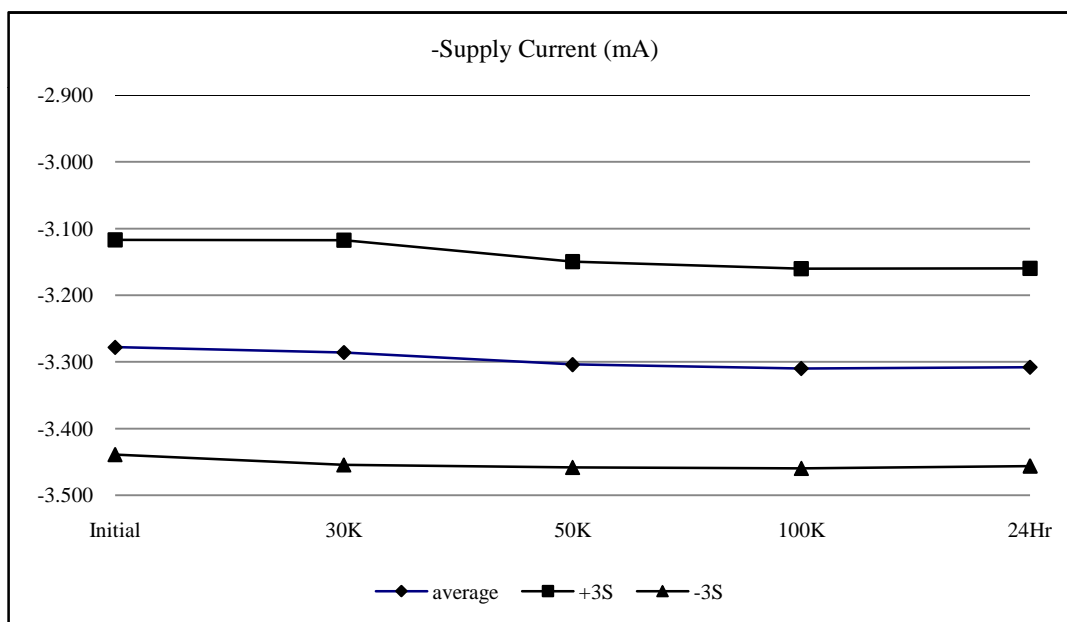
T# 4.1	VO- @ RL=500 OHMS G=100				V
SN	Initial	30K	50K	100K	24Hr
3	-5.910	-5.840	-5.840	-5.880	-5.810
4	-5.910	-5.850	-5.870	-5.860	-5.860
5	-5.900	-5.830	-5.870	-5.850	-5.850
6	-5.910	-5.850	-5.800	-5.870	-5.910
7	-5.900	-5.850	-5.880	-5.810	-6.080
8	-5.910	-5.840	-5.830	-5.860	-6.110
9	-5.900	-5.840	-5.830	-5.870	-6.110
10	-5.900	-5.830	-5.830	-5.860	-5.910
13	-5.880	-5.830	-5.850	-5.870	-5.880
14	-5.900	-5.900	-5.840	-5.840	-5.880
15	-6.070	-5.850	-5.930	-5.850	-5.870
min	-6.070	-5.900	-5.930	-5.870	-6.110
max	-5.880	-5.830	-5.800	-5.810	-5.850
stdev	0.054	0.021	0.036	0.018	0.108
average	-5.918	-5.847	-5.853	-5.854	-5.946
+3S	-5.756	-5.785	-5.744	-5.799	-5.621
-3S	-6.080	-5.909	-5.962	-5.909	-6.271



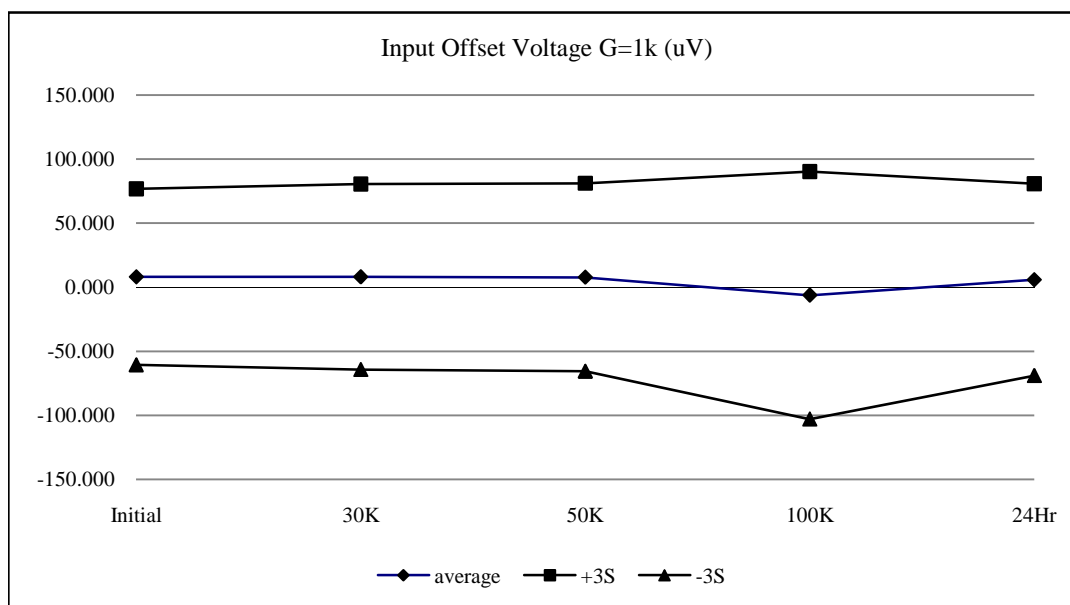
T# 5	IQ TOTAL+				mA
SN	Initial	30K	50K	100K	24Hr
3	2.960	2.960	2.960	2.960	2.960
4	2.970	2.980	2.990	3.000	3.000
5	2.940	2.950	2.960	2.970	2.970
6	2.950	2.960	2.970	2.980	2.980
7	3.020	3.030	3.040	3.040	3.050
8	3.020	3.030	3.050	3.060	3.060
9	2.920	2.930	2.950	2.950	2.950
10	2.960	2.960	2.980	2.980	2.980
13	3.080	3.090	3.090	3.100	3.100
14	2.950	2.970	2.980	2.980	2.980
15	2.970	2.970	2.980	2.980	2.980
min	2.920	2.930	2.950	2.950	2.950
max	3.080	3.090	3.090	3.100	3.100
stdev	0.048	0.048	0.045	0.047	0.048
average	2.978	2.987	2.999	3.004	3.005
+3S	3.122	3.132	3.135	3.146	3.149
-3S	2.834	2.842	2.863	2.862	2.861



T# 6	IQ TOTAL-				mA
SN	Initial	30K	50K	100K	24Hr
3	-3.260	-3.260	-3.260	-3.260	-3.260
4	-3.270	-3.270	-3.290	-3.300	-3.300
5	-3.240	-3.240	-3.260	-3.270	-3.270
6	-3.250	-3.260	-3.280	-3.280	-3.280
7	-3.320	-3.330	-3.350	-3.360	-3.350
8	-3.320	-3.340	-3.360	-3.360	-3.360
9	-3.220	-3.230	-3.250	-3.250	-3.250
10	-3.250	-3.260	-3.280	-3.290	-3.290
13	-3.400	-3.410	-3.410	-3.410	-3.410
14	-3.250	-3.260	-3.280	-3.290	-3.280
15	-3.260	-3.260	-3.280	-3.290	-3.290
min	-3.400	-3.410	-3.410	-3.410	-3.410
max	-3.220	-3.230	-3.250	-3.250	-3.250
stdev	0.054	0.056	0.051	0.050	0.049
average	-3.278	-3.286	-3.304	-3.310	-3.308
+3S	-3.117	-3.117	-3.150	-3.160	-3.160
-3S	-3.439	-3.455	-3.458	-3.460	-3.456

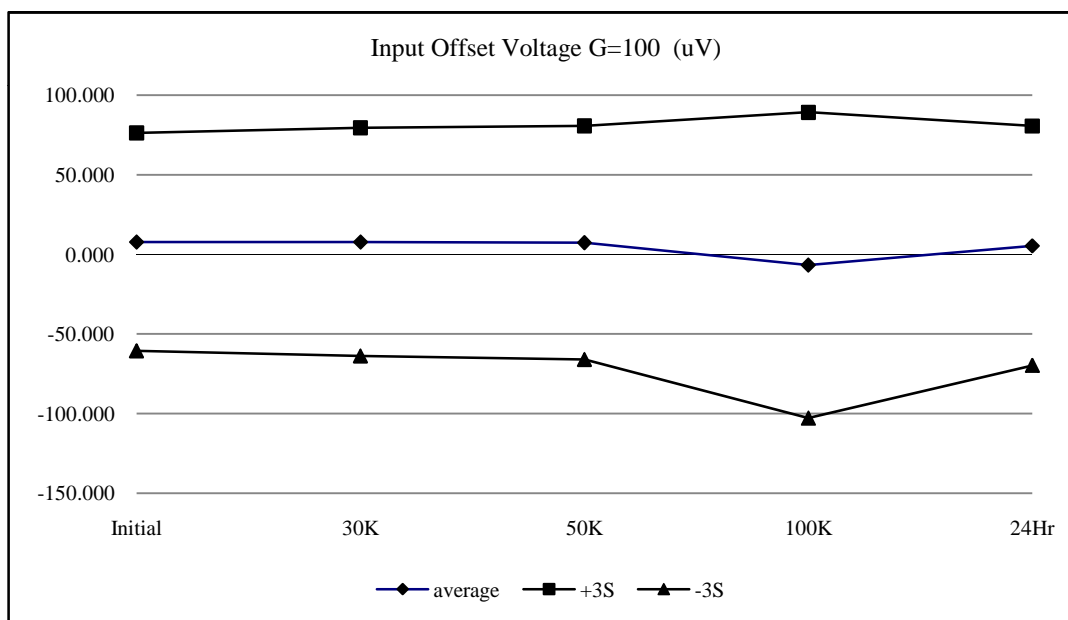


T# 8	VIOS G=1000				uV
SN	Initial	30K	50K	100K	24Hr
3	-46.360	-49.470	-51.960	-47.940	-48.520
4	-11.920	-9.150	-8.990	-71.740	-28.350
5	41.810	40.680	40.590	27.260	32.390
6	12.480	15.010	19.130	8.830	14.370
7	33.960	34.000	37.630	22.390	36.680
8	-28.780	-33.680	-33.500	-41.340	-28.970
9	-15.510	-15.920	-15.960	-29.370	-18.980
10	16.370	17.100	19.780	14.500	16.920
13	-4.610	-9.820	-11.600	-12.970	-6.260
14	26.290	27.520	22.460	17.980	30.070
15	10.520	15.540	7.980	1.300	10.810
min	-28.780	-33.680	-33.500	-71.740	-28.970
max	41.810	40.680	40.590	27.260	36.680
stdev	22.875	24.117	24.450	32.223	24.959
average	8.061	8.128	7.752	-6.316	5.868
+3S	76.685	80.479	81.103	90.354	80.744
-3S	-60.563	-64.223	-65.599	-102.986	-69.008

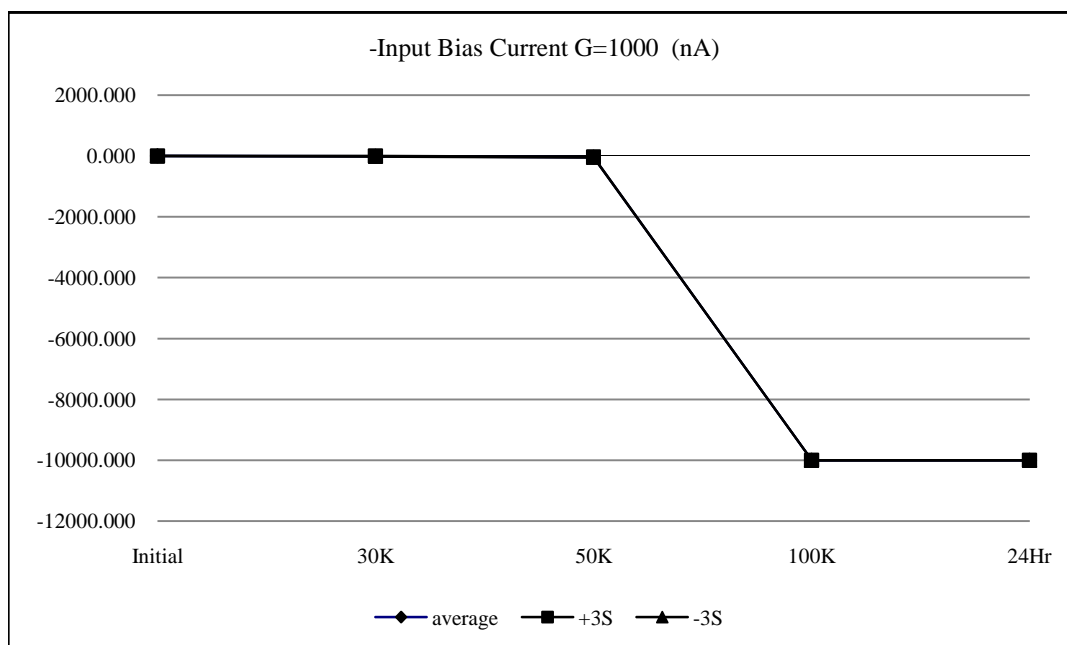




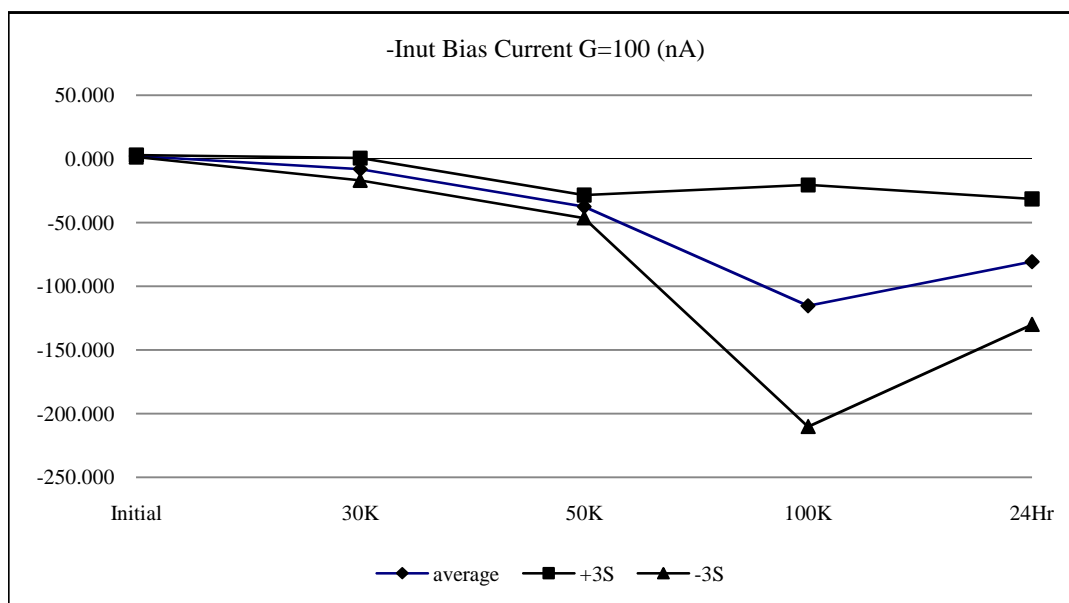
T# 8.1	VIOS G=100				uV
SN	Initial	30K	50K	100K	24Hr
3	-46.590	-50.370	-52.460	-47.780	-48.920
4	-12.150	-9.170	-8.830	-71.060	-28.800
5	41.290	40.350	39.420	26.520	31.520
6	11.910	14.740	18.560	8.180	13.500
7	33.610	33.310	37.700	22.240	36.690
8	-28.870	-33.150	-33.960	-41.940	-29.630
9	-16.100	-16.710	-16.250	-30.330	-19.640
10	16.230	16.350	19.590	13.810	17.110
13	-4.610	-9.960	-12.960	-13.180	-6.920
14	25.960	26.850	22.040	17.550	29.610
15	10.410	15.490	7.850	0.520	10.380
min	-28.870	-33.150	-33.960	-71.060	-29.630
max	41.290	40.350	39.420	26.520	36.690
stdev	22.804	23.885	24.447	31.986	25.057
average	7.768	7.810	7.316	-6.769	5.382
+3S	76.180	79.466	80.657	89.188	80.552
-3S	-60.644	-63.846	-66.025	-102.726	-69.788



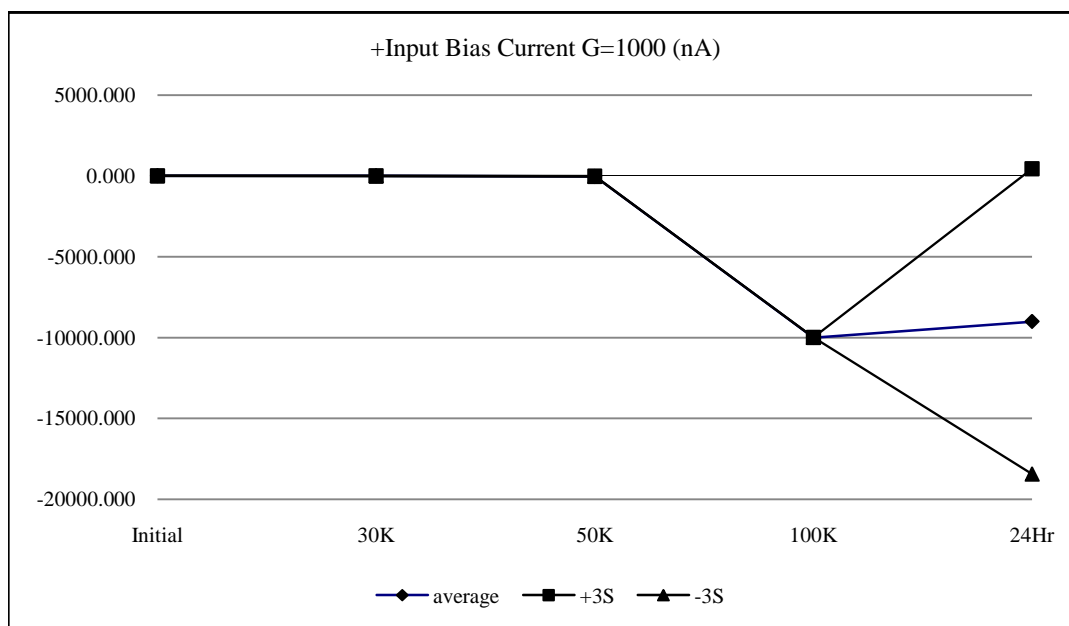
T# 9	-IBias G=1000				nA
SN	Initial	30K	50K	100K	24Hr
3	2.770	2.800	2.780	2.810	2.840
4	1.850	-3.250	-38.570	-10000.850	-10000.310
5	2.340	-7.730	-34.470	-9999.770	-9999.710
6	2.060	-7.110	-33.930	-9999.950	-9999.890
7	2.030	-11.410	-41.230	-9999.790	-9999.640
8	2.340	-10.060	-41.610	-10000.430	-10000.300
9	2.440	-9.080	-39.950	-10000.350	-10000.220
10	2.700	-3.990	-33.150	-9999.850	-9999.820
13	1.810	-12.670	-37.770	-10000.110	-10000.040
14	2.220	-8.100	-36.630	-9999.860	-9999.730
15	2.200	-8.540	-37.810	-10000.010	-9999.900
min	1.810	-12.670	-41.610	-10000.850	-10000.310
max	2.700	-3.250	-33.150	-9999.770	-9999.640
stdev	0.273	2.949	2.976	0.348	0.249
average	2.199	-8.194	-37.512	-10000.097	-9999.956
+3S	3.018	0.654	-28.583	-9999.053	-9999.209
-3S	1.380	-17.042	-46.441	-10001.141	-10000.703



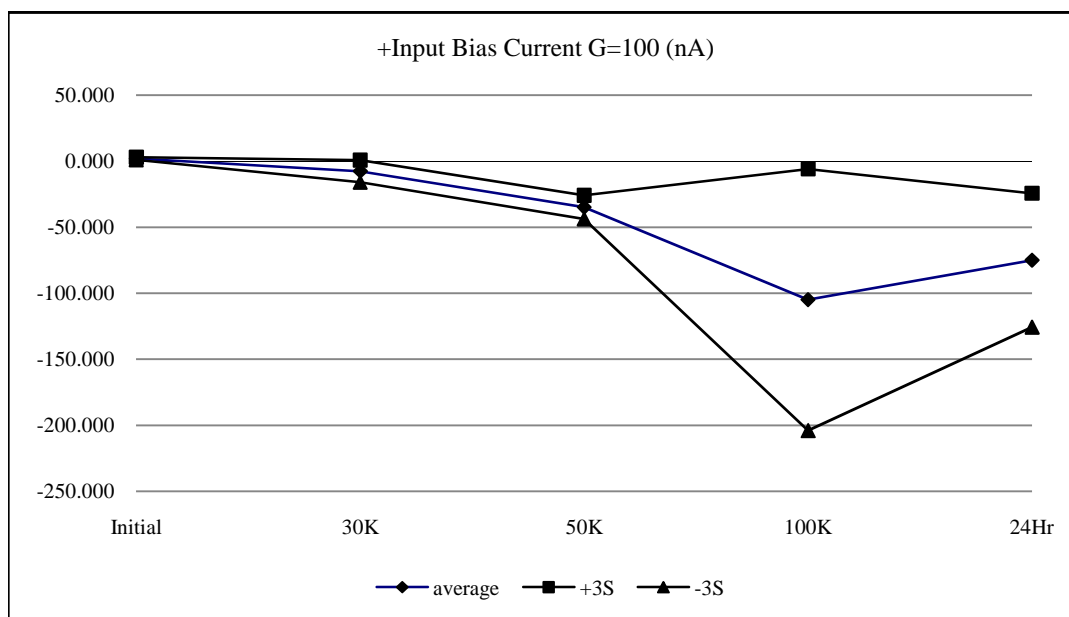
T# 9.1	-IBias G=100				nA
SN	Initial	30K	50K	100K	24Hr
3	2.770	2.810	2.800	2.800	2.830
4	1.840	-3.290	-38.550	-187.020	-108.900
5	2.330	-7.760	-34.460	-92.680	-65.110
6	2.070	-7.130	-33.880	-98.200	-70.670
7	2.020	-11.370	-41.250	-102.500	-74.370
8	2.310	-10.070	-41.660	-121.690	-87.030
9	2.450	-9.130	-39.890	-143.420	-103.410
10	2.690	-3.960	-33.120	-118.120	-82.770
13	1.790	-12.640	-37.860	-71.160	-54.730
14	2.230	-8.050	-36.630	-106.210	-78.140
15	2.210	-8.500	-37.850	-112.810	-82.960
min	1.790	-12.640	-41.660	-187.020	-108.900
max	2.690	-3.290	-33.120	-71.160	-54.730
stdev	0.275	2.937	2.995	31.602	16.415
average	2.194	-8.190	-37.515	-115.381	-80.809
+3S	3.018	0.622	-28.531	-20.574	-31.564
-3S	1.370	-17.002	-46.499	-210.188	-130.054



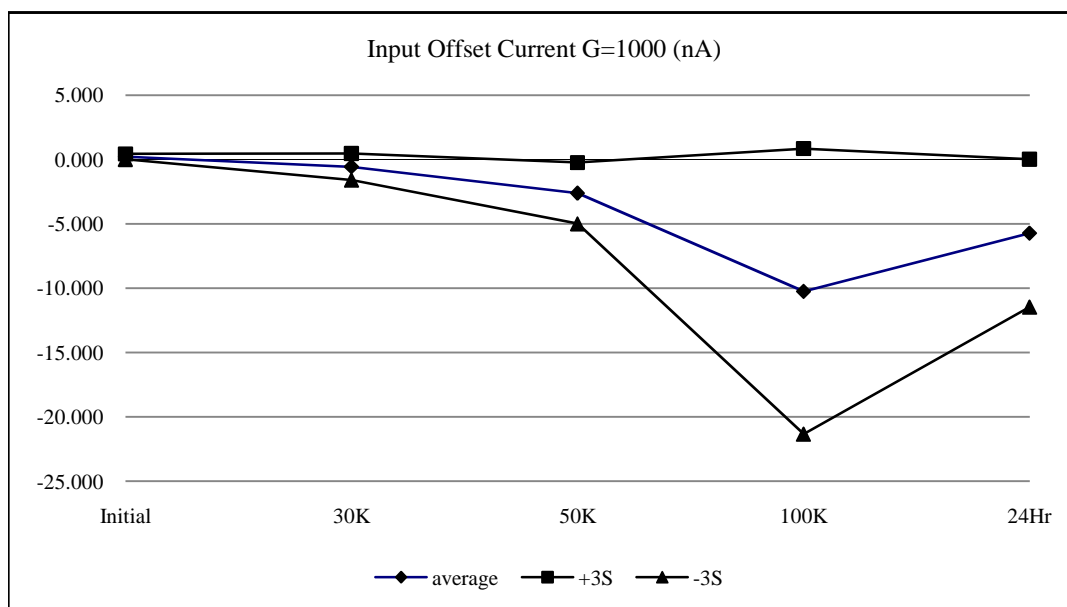
T# 10	+IBias G=1000				nA	
	SN	Initial	30K	50K	100K	24Hr
3		2.540	2.560	2.540	2.580	2.540
4		1.580	-3.340	-36.630	-9999.140	-9999.680
5		2.350	-7.000	-32.500	-10000.220	-10000.280
6		1.990	-6.520	-31.440	-10000.040	-10000.100
7		1.940	-10.440	-37.450	-10000.200	-10000.340
8		2.170	-9.680	-39.170	-9999.550	-9999.680
9		2.390	-7.810	-36.210	-9999.640	-9999.760
10		2.640	-3.380	-29.190	-10000.140	-10000.170
13		1.690	-12.060	-35.460	-9999.870	-49.110
14		2.240	-7.270	-34.340	-10000.130	-10000.260
15		2.140	-7.820	-34.900	-9999.970	-10000.090
min		1.580	-12.060	-39.170	-10000.220	-10000.340
max		2.640	-3.340	-29.190	-9999.140	-49.110
stdev		0.323	2.787	2.984	0.349	3146.760
average		2.113	-7.532	-34.729	-9999.890	-9004.947
+3S		3.082	0.830	-25.778	-9998.844	435.334
-3S		1.144	-15.894	-43.680	-10000.936	-18445.228



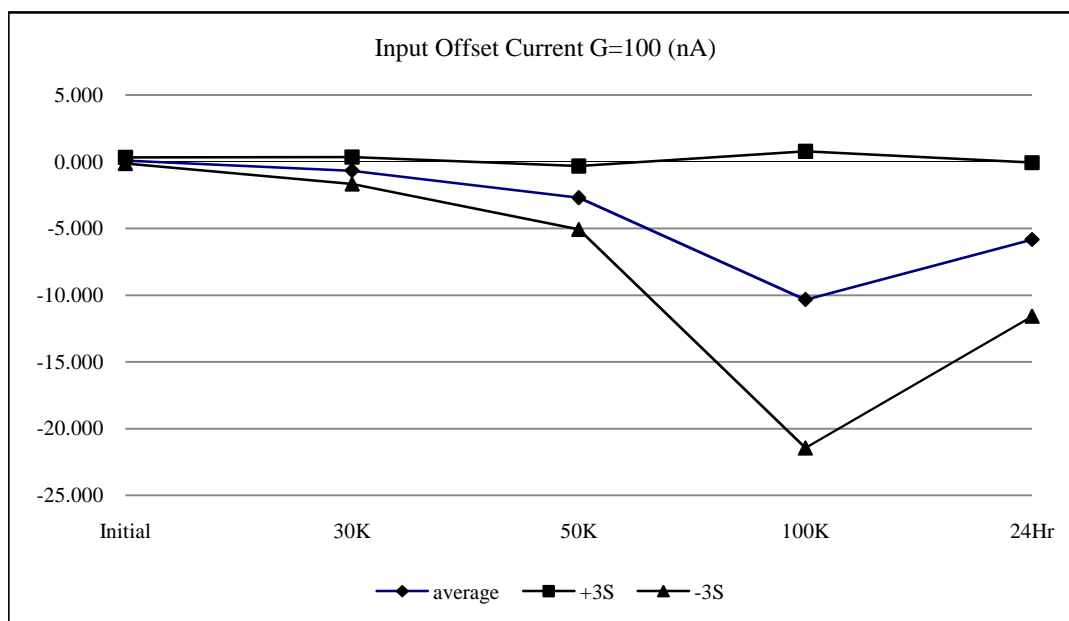
T# 10.1	+IBias G=100				nA
SN	Initial	30K	50K	100K	24Hr
3	2.430	2.440	2.430	2.510	2.460
4	1.440	-3.450	-36.750	-185.100	-107.800
5	2.240	-7.130	-32.670	-84.390	-60.750
6	1.840	-6.600	-31.560	-87.710	-64.640
7	1.800	-10.590	-37.620	-90.890	-67.480
8	2.070	-9.800	-39.260	-109.700	-80.370
9	2.250	-7.870	-36.360	-128.630	-95.400
10	2.520	-3.510	-29.290	-104.200	-77.030
13	1.600	-12.140	-35.590	-62.920	-49.290
14	2.110	-7.400	-34.460	-94.750	-71.210
15	2.070	-7.820	-35.040	-101.260	-76.100
min	1.440	-12.140	-39.260	-185.100	-107.800
max	2.520	-3.450	-29.290	-62.920	-49.290
stdev	0.325	2.783	2.986	33.015	16.893
average	1.994	-7.631	-34.860	-104.955	-75.007
+3S	2.969	0.719	-25.903	-5.911	-24.327
-3S	1.019	-15.981	-43.817	-203.999	-125.687



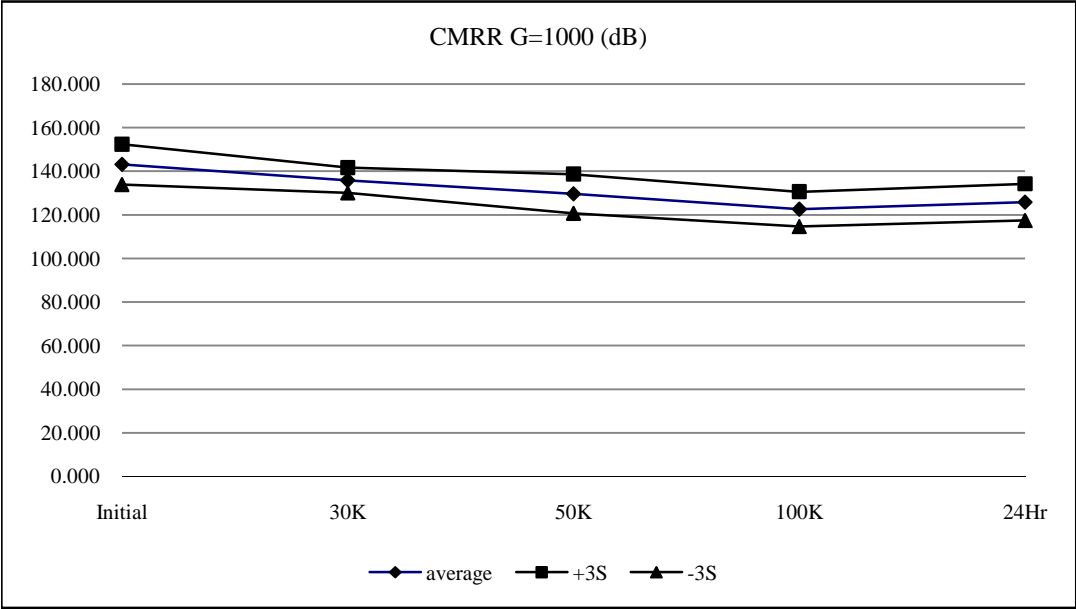
T# 11	IOS G=1000				nA
SN	Initial	30K	50K	100K	24Hr
3	0.380	0.380	0.350	0.350	0.360
4	0.380	0.130	-1.660	-1.480	-1.010
5	0.170	-0.600	-1.780	-8.130	-4.360
6	0.170	-0.530	-2.310	-10.390	-5.920
7	0.230	-0.770	-3.540	-11.560	-6.760
8	0.290	-0.310	-2.360	-11.690	-6.490
9	0.230	-1.230	-3.530	-14.580	-7.900
10	0.220	-0.470	-3.950	-13.790	-5.760
13	0.190	-0.510	-2.170	-8.190	-5.450
14	0.140	-0.670	-2.160	-11.220	-6.890
15	0.180	-0.690	-2.710	-11.420	-6.720
min	0.140	-1.230	-3.950	-14.580	-7.900
max	0.380	0.130	-1.660	-1.480	-1.010
stdev	0.070	0.345	0.793	3.698	1.913
average	0.220	-0.565	-2.617	-10.245	-5.726
+3S	0.431	0.471	-0.239	0.848	0.014
-3S	0.009	-1.601	-4.995	-21.338	-11.466



T# 11.1	IOS G=100				nA
SN	Initial	30K	50K	100K	24Hr
3	0.280	0.230	0.220	0.230	0.240
4	0.260	0.020	-1.780	-1.640	-1.110
5	0.020	-0.660	-1.850	-8.150	-4.430
6	0.040	-0.600	-2.340	-10.380	-6.010
7	0.110	-0.880	-3.630	-11.680	-6.890
8	0.200	-0.420	-2.370	-11.810	-6.570
9	0.090	-1.300	-3.580	-14.830	-8.040
10	0.100	-0.580	-4.020	-13.860	-5.860
13	0.100	-0.610	-2.240	-8.230	-5.570
14	0.030	-0.780	-2.250	-11.310	-6.960
15	0.050	-0.770	-2.880	-11.480	-6.840
min	0.020	-1.300	-4.020	-14.830	-8.040
max	0.260	0.020	-1.780	-1.640	-1.110
stdev	0.077	0.336	0.791	3.707	1.920
average	0.100	-0.658	-2.694	-10.337	-5.828
+3S	0.331	0.350	-0.320	0.784	-0.067
-3S	-0.131	-1.666	-5.068	-21.458	-11.589

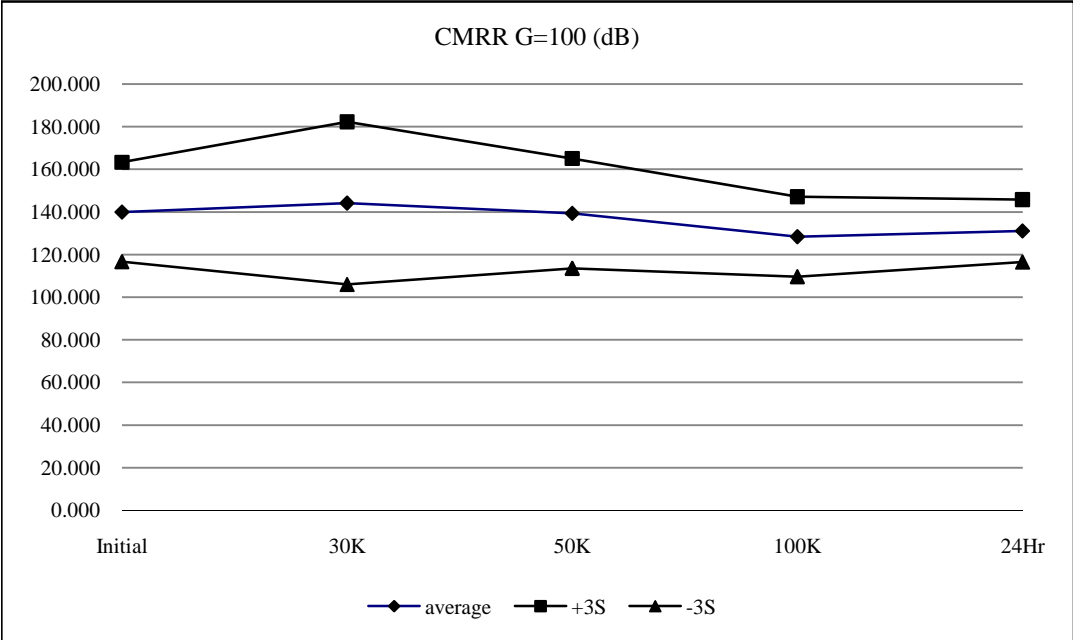


T# 13	CMRR G=1000				dB	
	SN	Initial	30K	50K	100K	24Hr
3		137.400	138.200	138.900	140.000	139.200
4		141.800	132.200	123.000	117.600	119.600
5		142.000	135.500	130.400	123.700	126.600
6		149.200	137.600	131.400	123.200	126.900
7		140.300	136.700	130.800	123.300	127.000
8		140.800	136.000	129.100	122.200	126.100
9		145.600	136.800	129.200	121.500	124.800
10		140.300	134.000	127.800	121.200	124.300
13		145.900	138.300	134.800	128.300	130.800
14		140.400	134.000	129.700	122.200	125.400
15		145.000	137.500	130.800	123.100	126.600
min		140.300	132.200	123.000	117.600	119.600
max		149.200	138.300	134.800	128.300	130.800
stdev		3.092	1.936	2.999	2.652	2.806
average		143.130	135.860	129.700	122.630	125.810
+3S		152.407	141.667	138.696	130.585	134.228
-3S		133.853	130.053	120.704	114.675	117.392

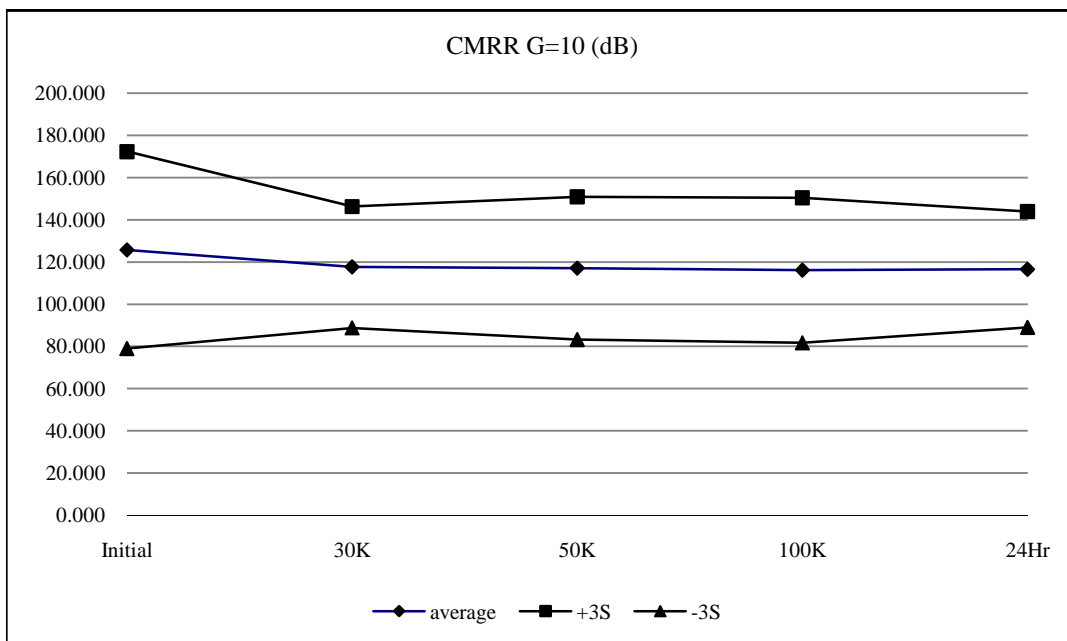




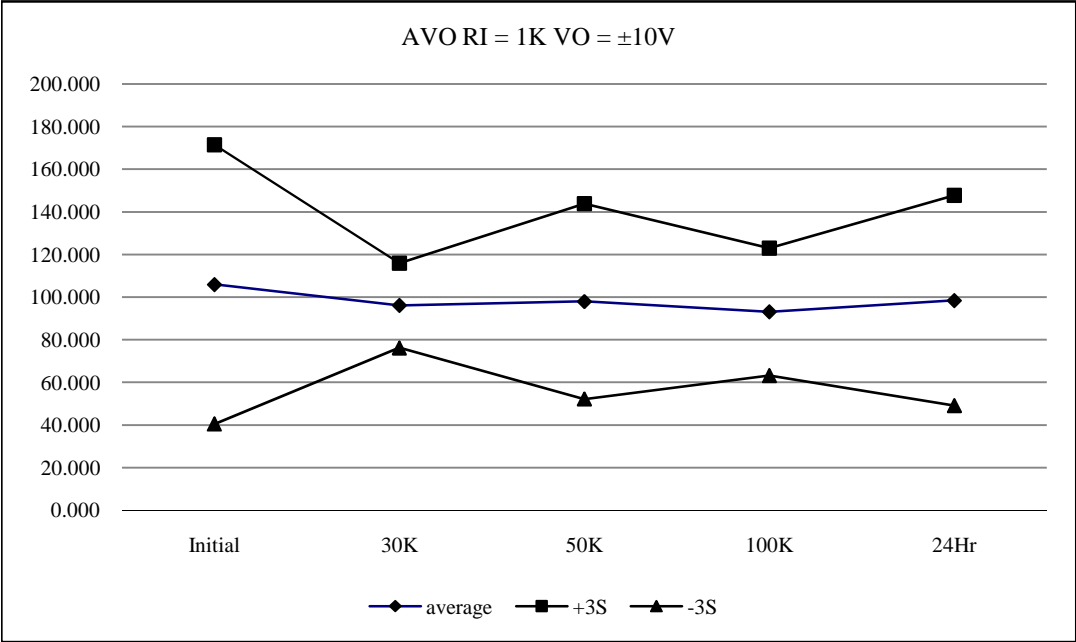
T# 14	CMRR G=100				dB
SN	Initial	30K	50K	100K	24Hr
3	132.100	132.200	131.300	132.700	131.900
4	149.700	153.400	145.800	144.500	131.400
5	138.600	136.500	130.600	123.800	126.500
6	153.600	174.300	136.200	125.200	130.700
7	139.100	147.300	134.100	125.000	128.600
8	144.000	141.500	142.700	132.500	142.400
9	132.400	135.000	154.000	127.100	135.200
10	134.900	145.300	135.100	126.200	128.000
13	130.500	131.800	132.600	128.700	129.600
14	132.600	131.900	130.600	123.300	125.800
15	144.300	144.700	151.300	127.700	132.700
min	130.500	131.800	130.600	123.300	125.800
max	153.600	174.300	154.000	144.500	142.400
stdev	7.782	12.728	8.592	6.255	4.884
average	139.970	144.170	139.300	128.400	131.090
+3S	163.317	182.354	165.077	147.164	145.742
-3S	116.623	105.986	113.523	109.636	116.438



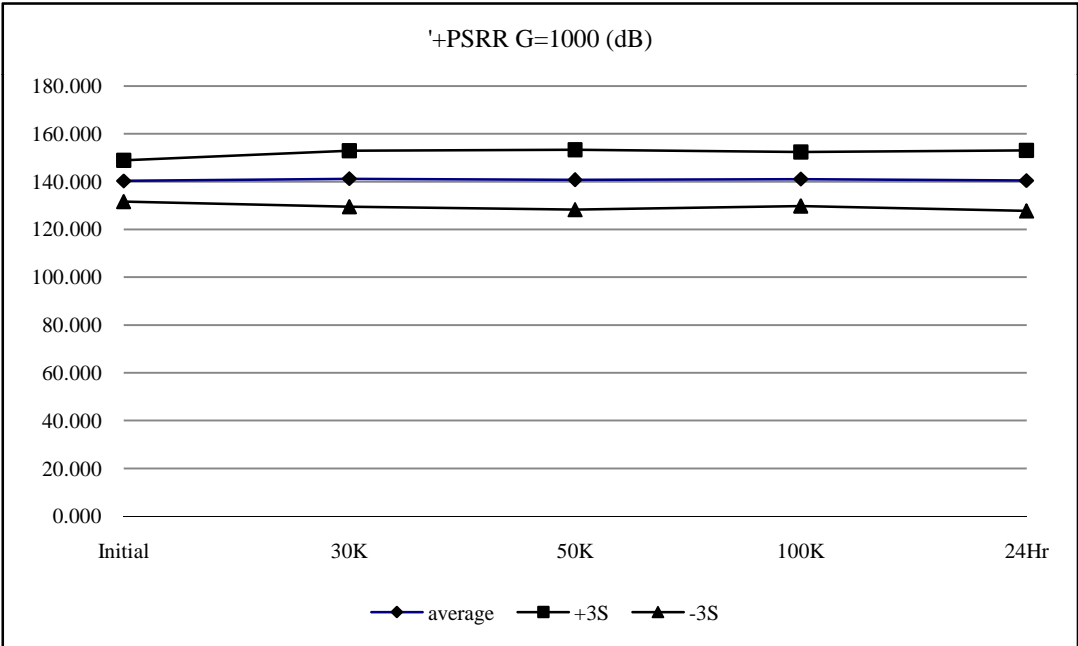
T# 15	CMRR G=10				dB	
	SN	Initial	30K	50K	100K	24Hr
3		116.300	117.300	114.800	116.800	116.800
4		125.400	111.300	103.100	97.800	102.300
5		122.500	142.300	139.800	121.300	130.000
6		124.000	116.900	116.600	116.100	118.000
7		146.200	119.700	119.000	122.800	122.200
8		159.400	110.800	108.000	105.800	107.600
9		108.900	108.500	108.100	108.700	107.700
10		121.100	119.500	111.700	110.700	114.100
13		111.500	114.500	122.600	134.700	124.600
14		117.000	119.500	130.300	131.000	125.900
15		120.300	112.500	111.400	111.900	112.300
min		108.900	108.500	103.100	97.800	102.300
max		159.400	142.300	139.800	134.700	130.000
stdev		15.560	9.583	11.280	11.462	9.145
average		125.630	117.550	117.060	116.080	116.470
+3S		172.310	146.300	150.899	150.467	143.904
-3S		78.950	88.800	83.221	81.693	89.036



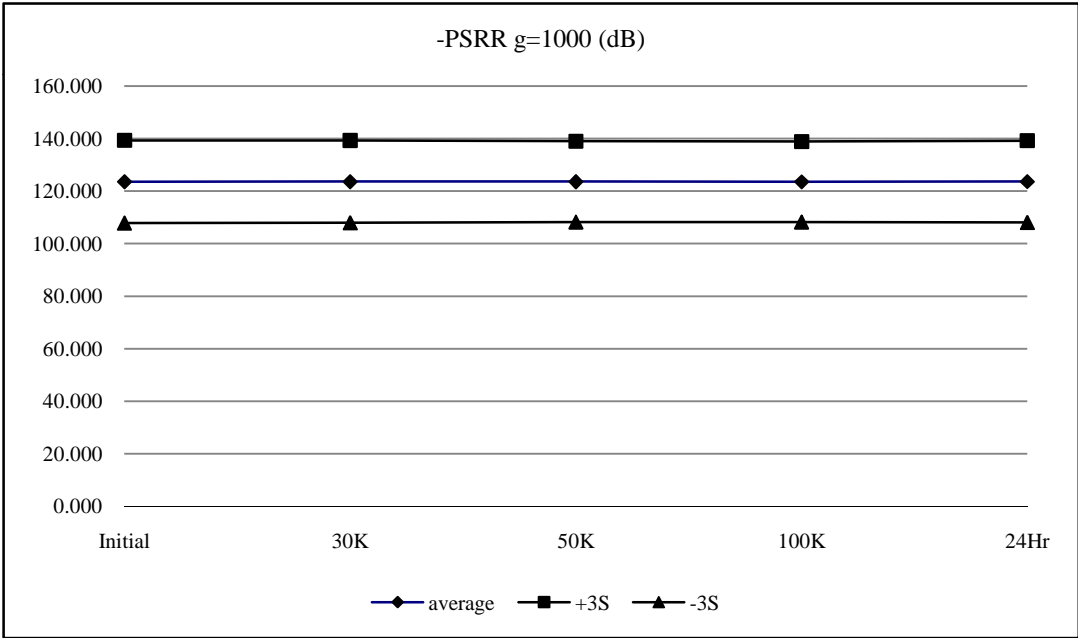
T# 16	CMRR G=1				dB
SN	Initial	30K	50K	100K	24Hr
3	98.000	97.900	95.100	98.200	98.000
4	101.100	90.400	82.800	77.000	81.200
5	105.700	110.000	133.000	111.300	109.800
6	99.600	96.000	94.700	93.900	94.800
7	165.600	97.300	96.200	97.100	97.600
8	110.300	91.100	86.600	84.500	86.200
9	88.700	87.600	87.100	86.900	86.500
10	100.900	100.900	90.800	88.100	91.400
13	91.800	94.500	110.500	104.200	110.200
14	97.000	101.400	108.500	97.600	136.500
15	99.100	92.000	90.000	90.600	90.400
min	88.700	87.600	82.800	77.000	81.200
max	165.600	110.000	133.000	111.300	136.500
stdev	21.836	6.624	15.280	9.968	16.444
average	105.980	96.120	98.020	93.120	98.460
+3S	171.488	115.992	143.860	123.023	147.792
-3S	40.472	76.248	52.180	63.217	49.128



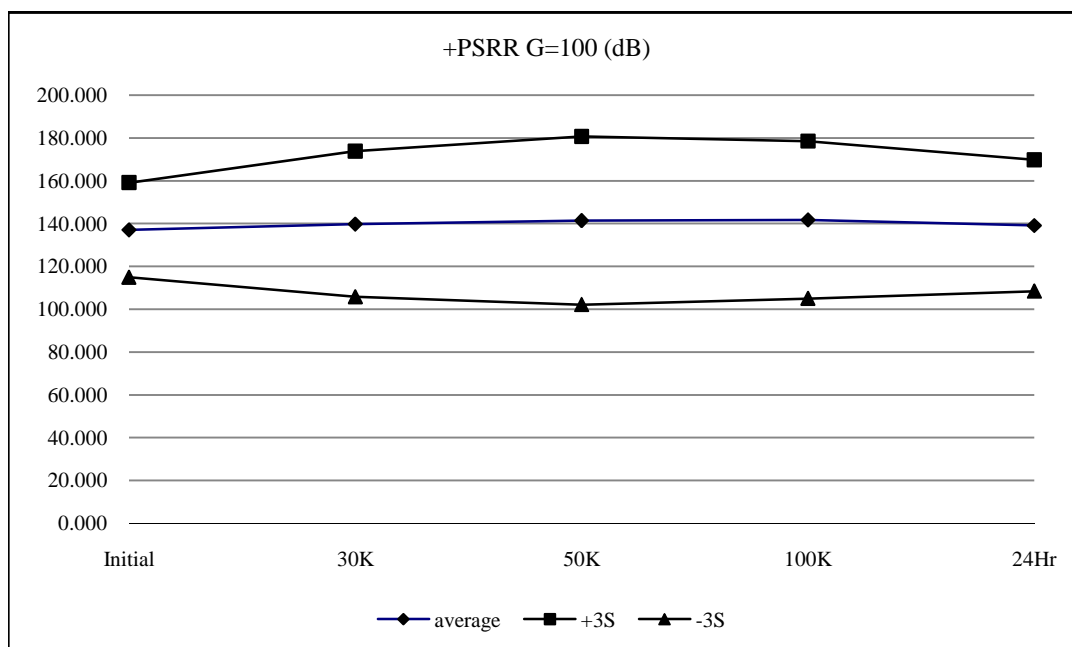
T# 17	+PSRR G=1000				dB	
	SN	Initial	30K	50K		100K
3		136.900	136.700	136.500	136.500	137.100
4		139.300	140.300	140.800	144.500	139.300
5		139.900	140.200	139.000	139.200	138.400
6		140.500	141.000	139.200	139.400	138.600
7		137.600	136.900	136.600	137.400	136.700
8		139.500	140.000	139.800	139.500	140.600
9		143.100	142.400	143.000	141.000	142.200
10		136.900	138.100	138.000	138.600	137.900
13		146.800	151.200	151.700	149.900	151.500
14		138.400	139.600	140.000	138.600	138.200
15		141.000	142.600	139.900	142.900	140.700
min		136.900	136.900	136.600	137.400	136.700
max		146.800	151.200	151.700	149.900	151.500
stdev		2.884	3.906	4.182	3.764	4.214
average		140.300	141.230	140.800	141.100	140.410
+3S		148.953	152.949	153.345	152.392	153.052
-3S		131.647	129.511	128.255	129.808	127.768



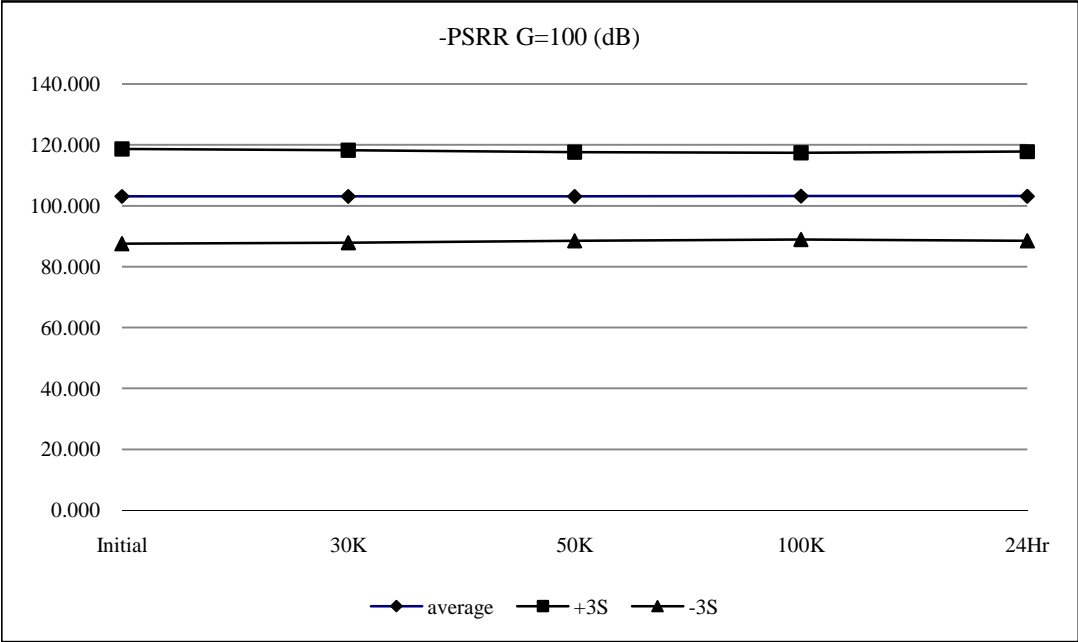
T# 18	-PSRR G=1000				dB	
	SN	Initial	30K	50K	100K	24Hr
3		121.900	122.000	122.000	121.900	121.900
4		118.100	118.100	118.600	118.800	118.500
5		123.300	123.300	123.200	123.500	123.100
6		120.400	120.500	120.400	120.200	120.500
7		120.100	120.100	120.200	120.000	120.100
8		129.300	129.100	128.500	128.200	129.000
9		134.800	134.800	134.800	134.700	134.700
10		127.400	127.600	127.800	127.900	128.000
13		120.900	121.100	121.200	121.000	121.100
14		120.700	120.700	120.900	120.600	120.800
15		120.900	120.800	120.600	120.700	120.600
min		118.100	118.100	118.600	118.800	118.500
max		134.800	134.800	134.800	134.700	134.700
stdev		5.251	5.232	5.122	5.105	5.195
average		123.590	123.610	123.620	123.560	123.640
+3S		139.344	139.307	138.985	138.876	139.226
-3S		107.836	107.913	108.255	108.244	108.054



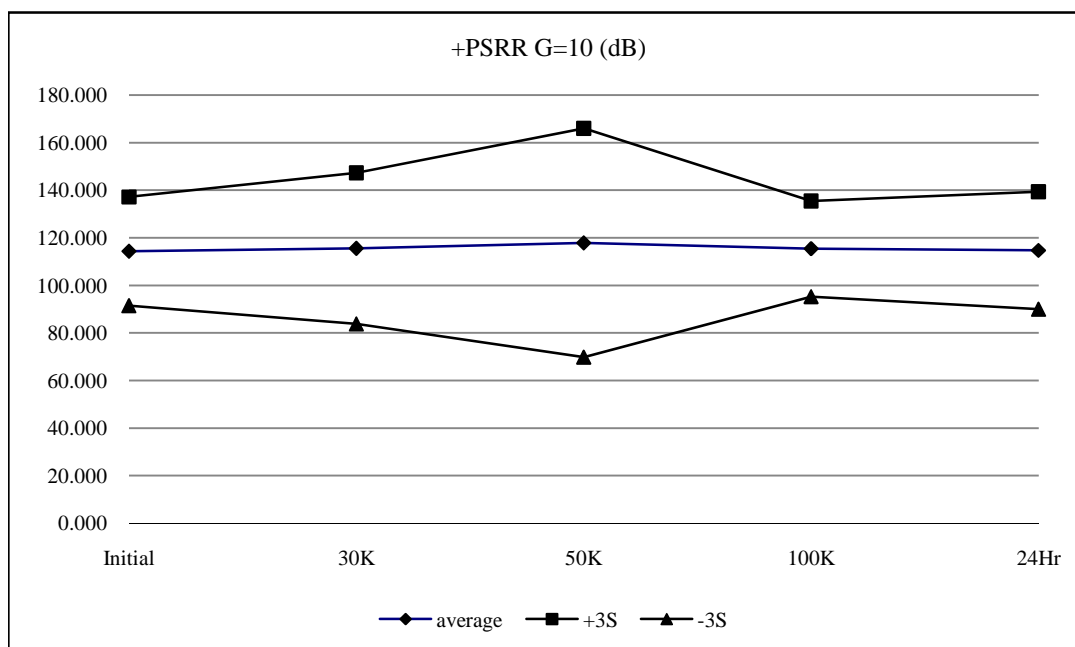
T# 19	+PSRR G=100				dB	
	SN	Initial	30K	50K		100K
3		132.500	132.500	132.200	131.700	133.100
4		134.500	136.800	133.800	133.900	135.400
5		150.300	165.200	160.300	152.400	145.900
6		137.000	142.800	164.200	155.300	158.300
7		138.600	137.100	135.600	135.000	132.600
8		144.300	138.300	140.700	147.700	142.200
9		124.700	125.700	125.600	126.400	125.200
10		134.300	142.300	137.300	137.400	137.400
13		131.100	129.600	131.100	132.200	130.400
14		142.700	149.100	152.500	163.800	150.900
15		132.200	130.500	132.600	133.000	132.100
min		124.700	125.700	125.600	126.400	125.200
max		150.300	165.200	164.200	163.800	158.300
stdev		7.363	11.327	13.090	12.239	10.222
average		136.970	139.740	141.370	141.710	139.040
+3S		159.058	173.722	180.640	178.427	169.706
-3S		114.882	105.758	102.100	104.993	108.374



T# 20	-PSRR G=100				dB
	Initial	30K	50K	100K	24Hr
3	102.900	102.900	102.900	102.900	103.000
4	97.400	97.500	97.800	98.500	98.000
5	104.700	104.600	104.500	104.500	104.600
6	99.400	99.400	99.500	99.400	99.500
7	99.300	99.400	99.400	99.500	99.400
8	112.400	111.600	110.900	110.300	110.900
9	111.100	111.400	111.200	111.500	111.400
10	105.500	105.700	106.000	106.400	106.100
13	99.800	100.000	100.100	100.200	100.100
14	99.800	99.800	99.900	100.000	99.900
15	101.900	101.800	101.700	101.700	101.700
min	97.400	97.500	97.800	98.500	98.000
max	112.400	111.600	111.200	111.500	111.400
stdev	5.192	5.067	4.862	4.749	4.885
average	103.130	103.120	103.100	103.200	103.160
+3S	118.707	118.321	117.686	117.446	117.816
-3S	87.553	87.919	88.514	88.954	88.504

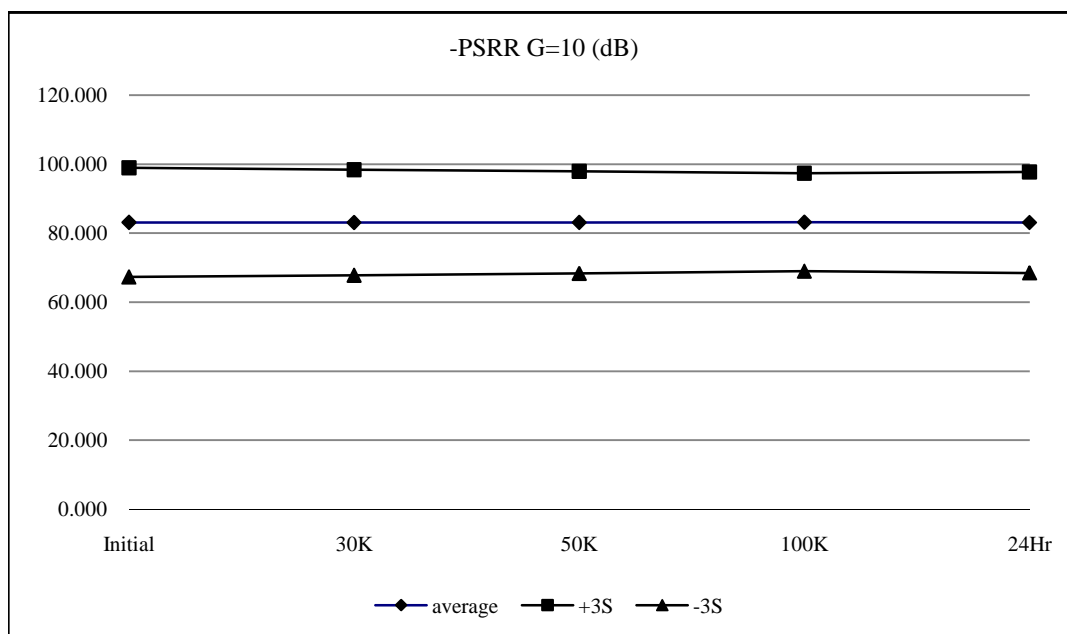


T# 21	+PSRR G=10				dB	
	SN	Initial	30K	50K	100K	24Hr
3		117.600	117.500	117.400	116.900	118.300
4		110.200	111.100	110.600	114.400	111.800
5		115.800	114.300	115.700	117.000	114.100
6		112.200	113.500	116.600	122.600	116.000
7		129.700	133.800	123.900	117.100	120.600
8		115.800	111.900	114.700	115.000	112.800
9		102.900	103.700	103.900	104.800	103.900
10		123.300	135.600	160.700	128.200	134.000
13		109.100	108.700	109.300	109.600	109.500
14		114.500	114.400	115.400	115.600	115.900
15		109.500	108.500	107.900	109.300	108.000
min		102.900	103.700	103.900	104.800	103.900
max		129.700	135.600	160.700	128.200	134.000
stdev		7.630	10.606	16.035	6.713	8.242
average		114.300	115.550	117.870	115.360	114.660
+3S		137.190	147.367	165.975	135.498	139.386
-3S		91.410	83.733	69.765	95.222	89.934

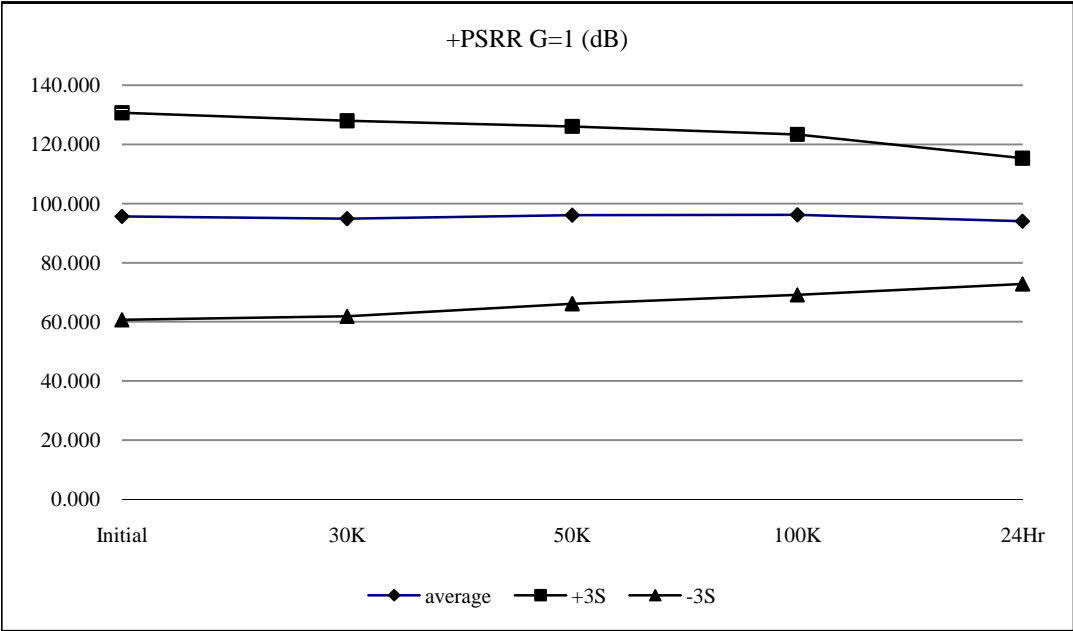




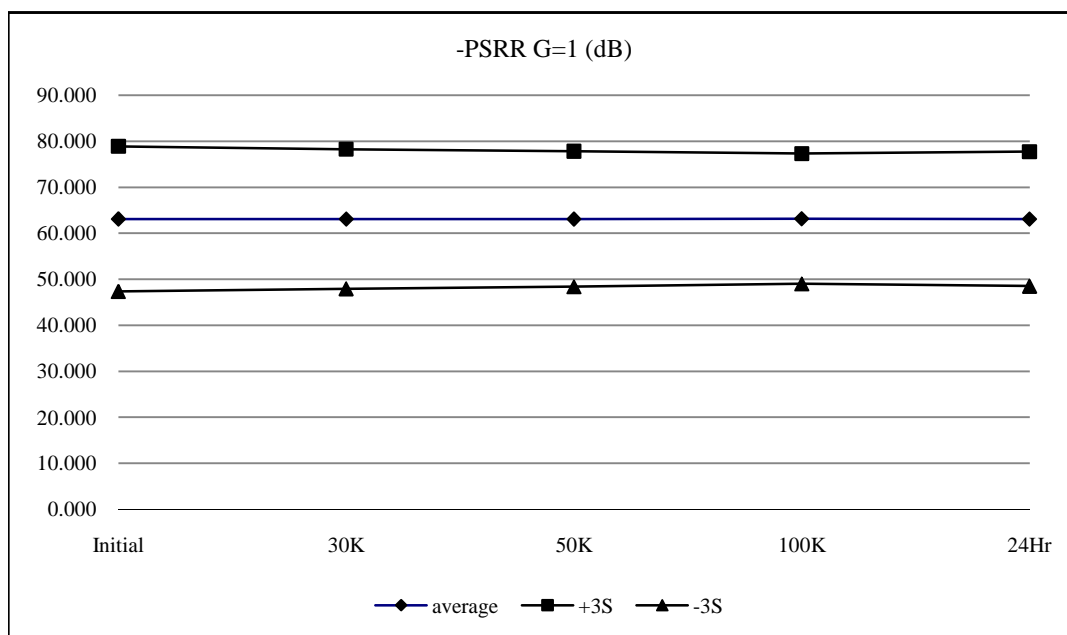
T# 22	-PSRR G=10				dB
	Initial	30K	50K	100K	24Hr
3	83.000	83.000	83.000	83.000	83.000
4	77.300	77.500	77.800	78.500	77.900
5	84.900	84.700	84.700	84.700	84.700
6	79.300	79.300	79.300	79.400	79.400
7	79.200	79.300	79.400	79.400	79.300
8	92.800	91.900	91.200	90.500	91.100
9	90.800	91.100	91.100	91.100	90.900
10	85.400	85.600	86.000	86.200	86.000
13	79.700	79.900	80.000	80.100	80.000
14	79.700	79.800	79.800	79.900	79.800
15	82.100	81.900	81.800	81.800	81.800
min	77.300	77.500	77.800	78.500	77.900
max	92.800	91.900	91.200	91.100	91.100
stdev	5.263	5.089	4.933	4.718	4.867
average	83.120	83.100	83.110	83.160	83.090
+3S	98.910	98.366	97.908	97.315	97.690
-3S	67.330	67.834	68.312	69.005	68.490



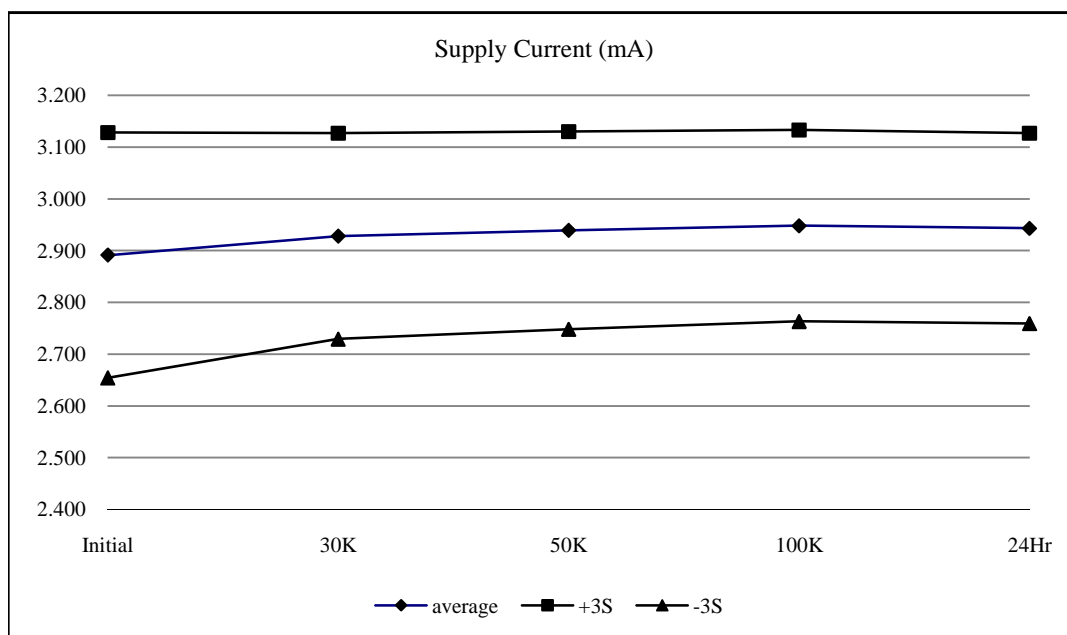
T# 23	+PSRR G=1				dB
	Initial	30K	50K	100K	24Hr
3	99.100	97.500	98.000	98.400	98.300
4	89.800	90.500	90.400	94.900	91.500
5	95.500	94.900	96.200	96.600	93.700
6	91.900	93.100	96.100	96.000	95.000
7	123.600	121.800	106.800	106.600	100.700
8	93.800	92.300	95.000	93.300	93.000
9	82.700	83.000	84.000	84.100	84.300
10	107.400	104.900	118.700	115.800	109.800
13	89.100	88.500	89.900	90.900	89.000
14	93.500	91.900	94.800	95.200	94.500
15	89.300	87.800	88.800	88.600	88.600
min	82.700	83.000	84.000	84.100	84.300
max	123.600	121.800	118.700	115.800	109.800
stdev	11.674	11.030	9.993	9.042	7.082
average	95.660	94.870	96.070	96.200	94.010
+3S	130.682	127.960	126.050	123.327	115.255
-3S	60.638	61.780	66.090	69.073	72.765



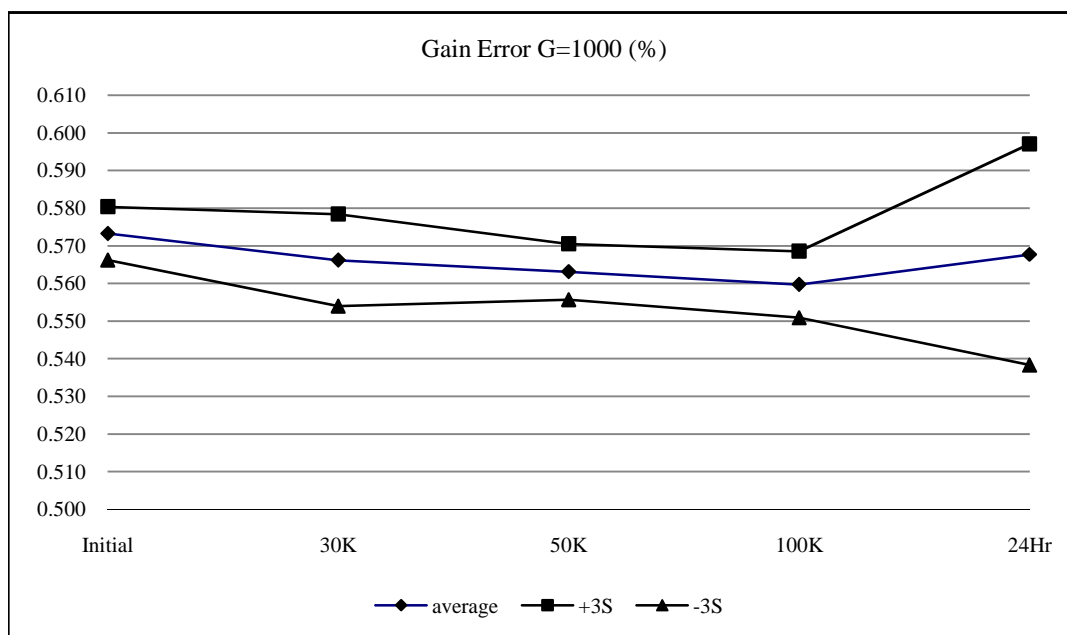
T# 24	-PSRR G=1				dB
	Initial	30K	50K	100K	24Hr
3	63.000	63.000	63.000	63.000	63.000
4	57.300	57.500	57.800	58.400	57.900
5	64.900	64.700	64.700	64.600	64.700
6	59.200	59.300	59.300	59.400	59.400
7	59.200	59.300	59.300	59.400	59.300
8	72.800	71.900	71.000	70.400	71.200
9	70.700	70.900	71.100	71.100	70.800
10	65.400	65.600	66.000	66.300	66.000
13	59.700	59.900	60.000	60.100	60.000
14	59.700	59.800	59.800	59.900	59.800
15	62.100	61.900	61.800	61.800	61.800
min	57.300	57.500	57.800	58.400	57.900
max	72.800	71.900	71.100	71.100	71.200
stdev	5.255	5.054	4.905	4.716	4.867
average	63.100	63.080	63.080	63.140	63.090
+3S	78.866	78.242	77.795	77.288	77.692
-3S	47.334	47.918	48.365	48.992	48.488



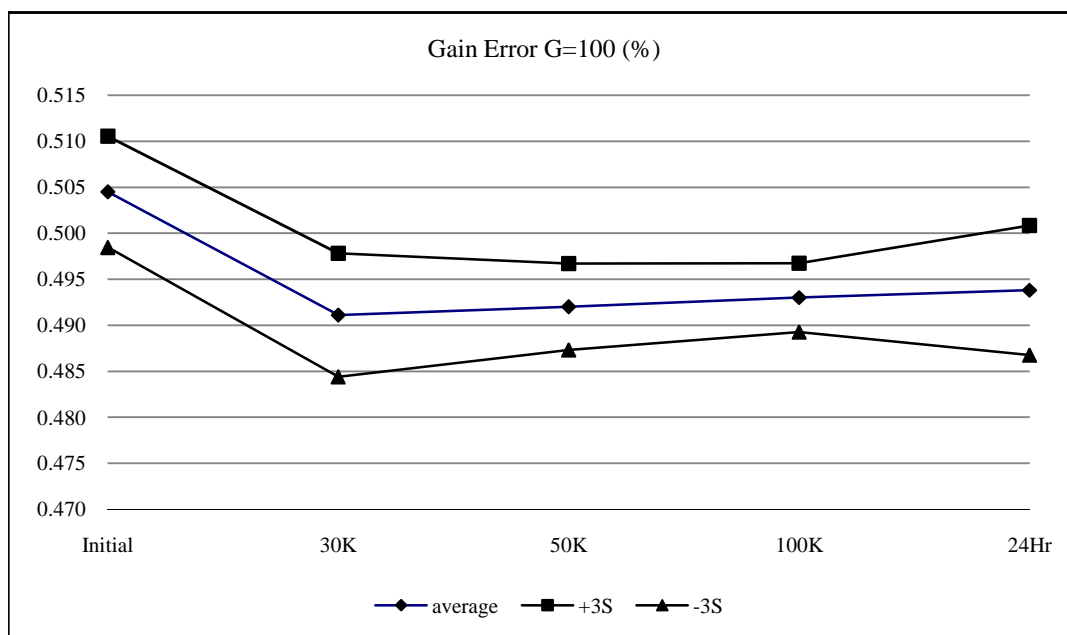
T# 26	Supply Current				mA	
	SN	Initial	30K	50K	100K	24Hr
3		2.870	2.870	2.870	2.860	2.860
4		2.880	2.910	2.920	2.940	2.930
5		2.830	2.890	2.900	2.900	2.900
6		2.850	2.900	2.910	2.920	2.910
7		2.930	2.960	2.980	2.990	2.980
8		2.930	2.980	2.990	3.000	2.990
9		2.820	2.870	2.880	2.890	2.890
10		2.860	2.900	2.910	2.920	2.920
13		3.090	3.090	3.090	3.090	3.090
14		2.860	2.890	2.910	2.920	2.910
15		2.860	2.890	2.900	2.910	2.910
min		2.820	2.870	2.880	2.890	2.890
max		3.090	3.090	3.090	3.090	3.090
stdev		0.079	0.066	0.064	0.062	0.061
average		2.891	2.928	2.939	2.948	2.943
+3S		3.128	3.127	3.130	3.133	3.127
-3S		2.654	2.729	2.748	2.763	2.759



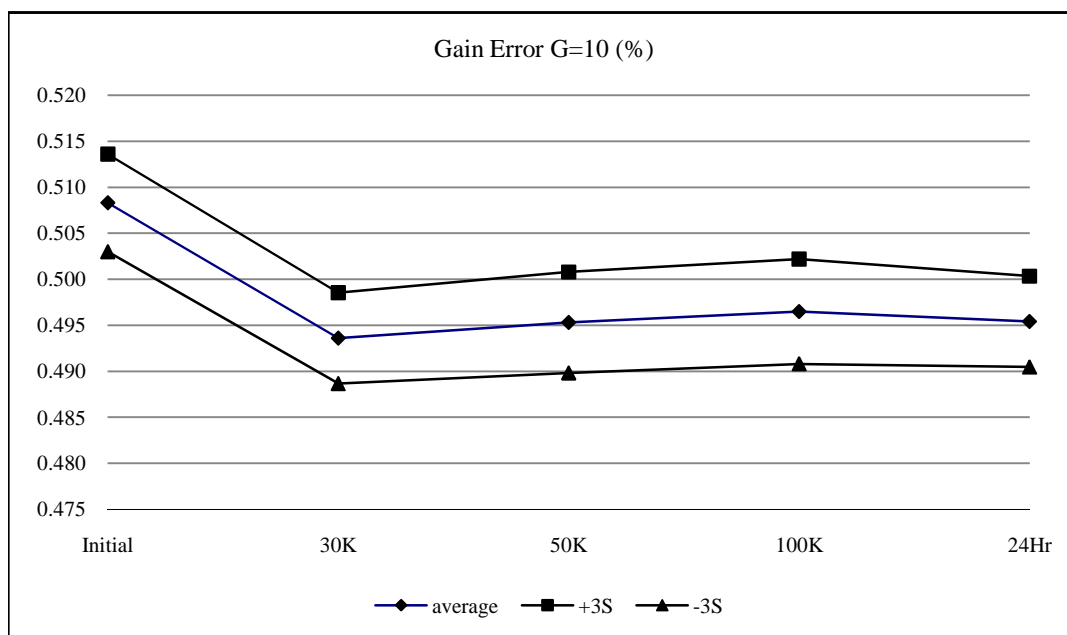
T# 27	Gain Error G=1000				%
SN	Initial	30K	50K	100K	24Hr
3	0.573	0.565	0.561	0.561	0.556
4	0.573	0.573	0.569	0.563	0.559
5	0.571	0.562	0.563	0.558	0.555
6	0.574	0.567	0.562	0.565	0.557
7	0.576	0.567	0.563	0.562	0.564
8	0.573	0.563	0.563	0.560	0.560
9	0.571	0.563	0.563	0.557	0.571
10	0.576	0.568	0.562	0.559	0.580
13	0.571	0.566	0.565	0.559	0.580
14	0.571	0.572	0.561	0.559	0.577
15	0.577	0.561	0.560	0.555	0.574
min	0.571	0.561	0.560	0.555	0.555
max	0.577	0.573	0.569	0.565	0.580
stdev	0.002	0.004	0.002	0.003	0.010
average	0.573	0.566	0.563	0.560	0.568
+3S	0.580	0.578	0.571	0.569	0.597
-3S	0.566	0.554	0.556	0.551	0.538



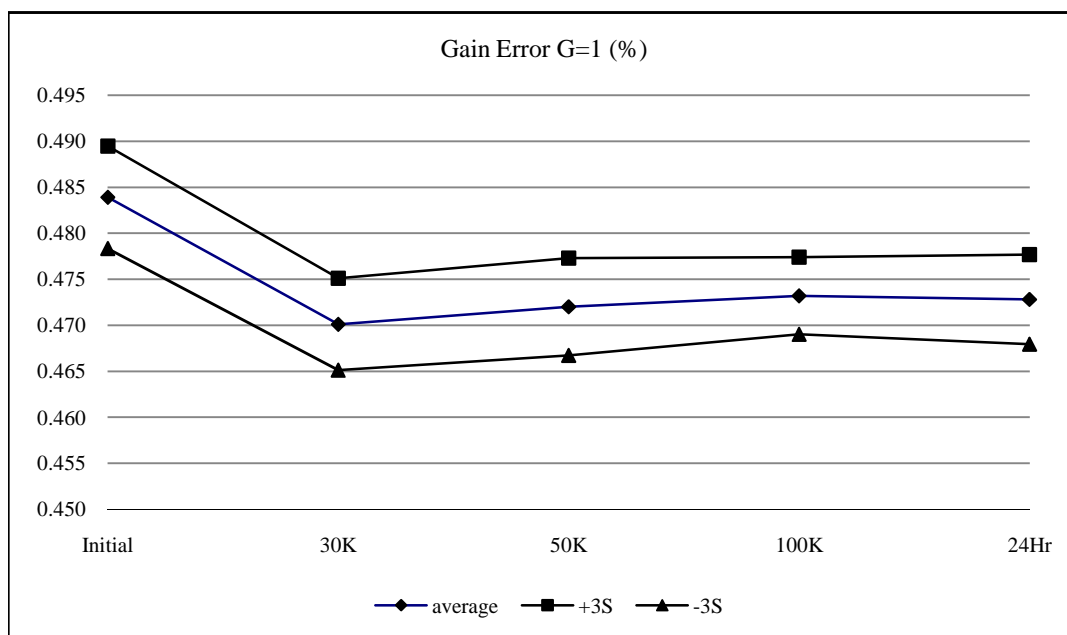
T# 28	Gain Error G=100				%
SN	Initial	30K	50K	100K	24Hr
3	0.504	0.488	0.489	0.491	0.490
4	0.507	0.494	0.494	0.493	0.492
5	0.503	0.487	0.489	0.491	0.489
6	0.507	0.491	0.492	0.495	0.494
7	0.507	0.491	0.493	0.494	0.495
8	0.502	0.490	0.490	0.492	0.492
9	0.503	0.490	0.492	0.492	0.495
10	0.504	0.491	0.492	0.493	0.497
13	0.505	0.492	0.494	0.494	0.496
14	0.505	0.495	0.492	0.494	0.493
15	0.502	0.490	0.492	0.492	0.495
min	0.502	0.487	0.489	0.491	0.489
max	0.507	0.495	0.494	0.495	0.497
stdev	0.002	0.002	0.002	0.001	0.002
average	0.505	0.491	0.492	0.493	0.494
+3S	0.511	0.498	0.497	0.497	0.501
-3S	0.498	0.484	0.487	0.489	0.487



T# 29	Gain Error G=10				%
	Initial	30K	50K	100K	24Hr
3	0.508	0.491	0.494	0.494	0.495
4	0.510	0.496	0.498	0.498	0.496
5	0.507	0.490	0.492	0.494	0.493
6	0.510	0.494	0.496	0.497	0.496
7	0.511	0.494	0.496	0.497	0.496
8	0.506	0.494	0.493	0.493	0.494
9	0.507	0.493	0.495	0.497	0.496
10	0.508	0.494	0.496	0.497	0.498
13	0.509	0.494	0.496	0.498	0.497
14	0.509	0.495	0.497	0.499	0.495
15	0.506	0.492	0.494	0.495	0.493
min	0.506	0.490	0.492	0.493	0.493
max	0.511	0.496	0.498	0.499	0.498
stdev	0.002	0.002	0.002	0.002	0.002
average	0.508	0.494	0.495	0.497	0.495
+3S	0.514	0.499	0.501	0.502	0.500
-3S	0.503	0.489	0.490	0.491	0.490

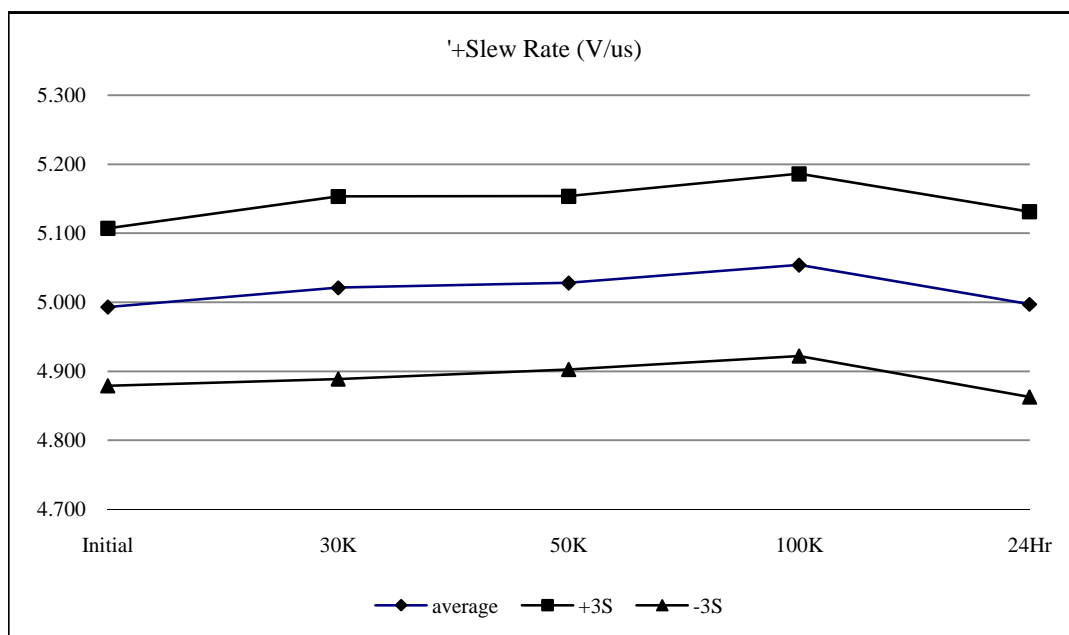


T# 30	Gain Error G=1				%
	Initial	30K	50K	100K	24Hr
3	0.484	0.468	0.470	0.470	0.470
4	0.487	0.471	0.474	0.474	0.474
5	0.482	0.467	0.469	0.471	0.471
6	0.485	0.470	0.472	0.474	0.473
7	0.485	0.471	0.473	0.474	0.474
8	0.482	0.468	0.470	0.472	0.471
9	0.483	0.470	0.471	0.474	0.473
10	0.484	0.471	0.472	0.474	0.475
13	0.485	0.472	0.474	0.475	0.474
14	0.485	0.472	0.474	0.473	0.473
15	0.481	0.469	0.471	0.471	0.470
min	0.481	0.467	0.469	0.471	0.470
max	0.487	0.472	0.474	0.475	0.475
stdev	0.002	0.002	0.002	0.001	0.002
average	0.484	0.470	0.472	0.473	0.473
+3S	0.489	0.475	0.477	0.477	0.478
-3S	0.478	0.465	0.467	0.469	0.468

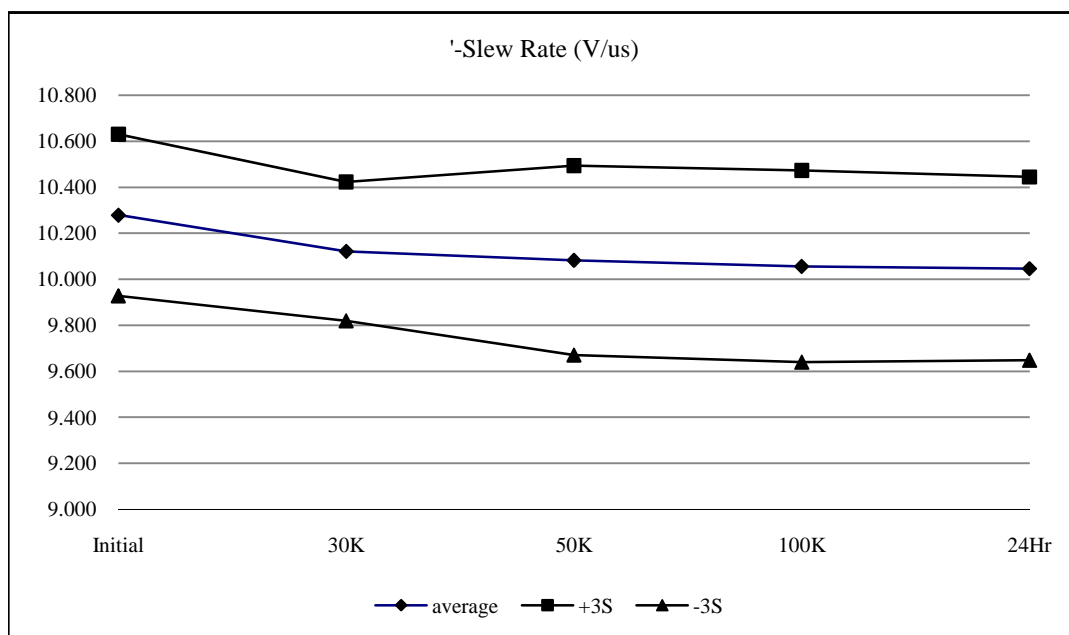




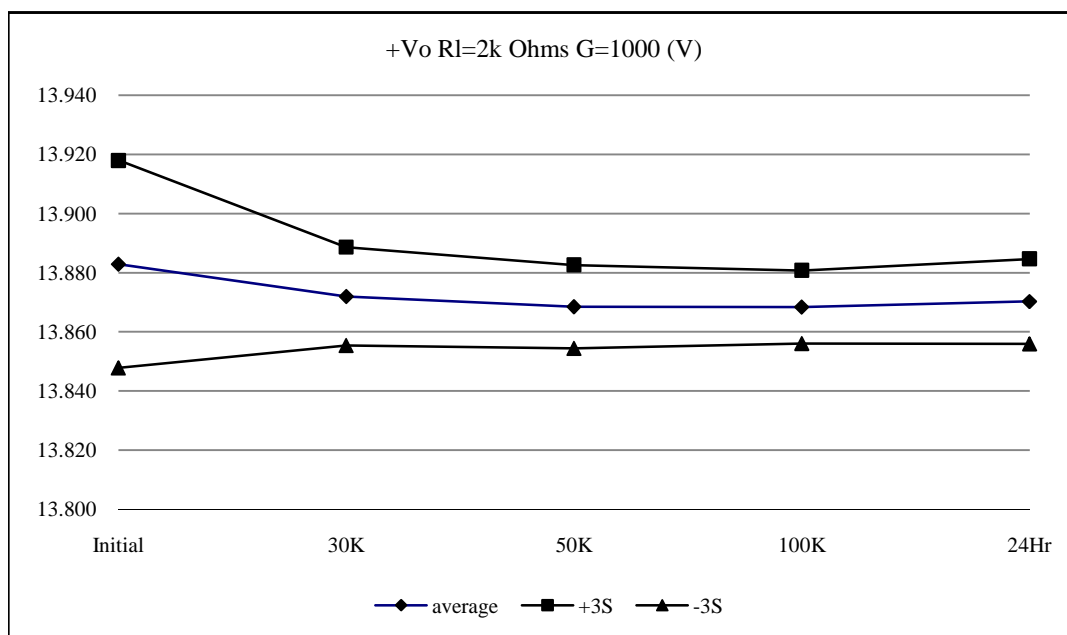
T# 31	+Slew Rate				V/us
SN	Initial	30K	50K	100K	24Hr
3	5.000	5.000	5.000	4.990	5.030
4	5.010	5.080	5.080	5.090	5.000
5	4.980	5.030	5.030	5.060	4.950
6	4.950	4.990	4.990	5.030	4.960
7	5.040	5.060	5.060	5.100	5.050
8	5.050	5.090	5.100	5.140	5.080
9	4.950	4.990	4.980	5.030	4.960
10	4.990	5.010	5.010	5.030	5.000
13	5.030	5.000	5.040	5.040	5.030
14	4.980	5.010	5.010	5.030	4.990
15	4.950	4.950	4.980	4.990	4.950
min	4.950	4.950	4.980	4.990	4.950
max	5.050	5.090	5.100	5.140	5.080
stdev	0.038	0.044	0.042	0.044	0.045
average	4.993	5.021	5.028	5.054	4.997
+3S	5.107	5.153	5.154	5.186	5.131
-3S	4.879	4.889	4.902	4.922	4.863



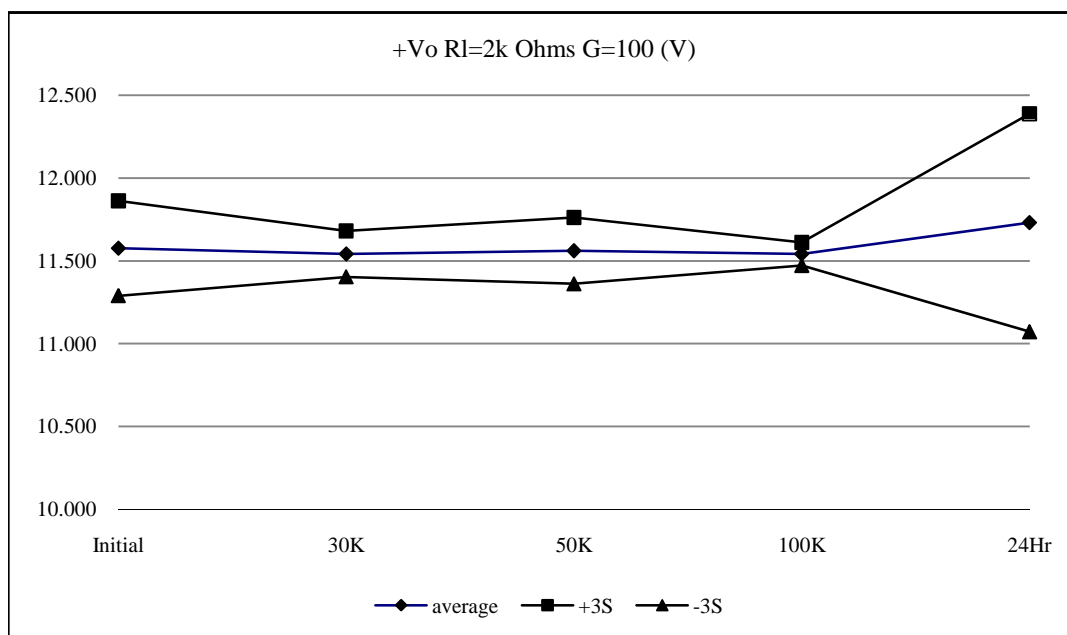
T# 32	-Slew Rate				V/us
	Initial	30K	50K	100K	24Hr
3	10.150	10.100	10.100	10.100	10.150
4	10.260	10.100	10.000	9.900	9.900
5	10.200	10.100	10.100	10.050	9.950
6	10.260	10.150	10.050	10.050	10.050
7	10.200	10.100	10.050	10.050	10.050
8	10.310	10.150	10.150	10.150	10.100
9	10.260	10.100	10.000	10.000	10.000
10	10.150	9.950	9.900	9.850	9.900
13	10.580	10.360	10.420	10.360	10.360
14	10.260	10.100	10.050	10.050	10.050
15	10.310	10.100	10.100	10.100	10.100
min	10.150	9.950	9.900	9.850	9.900
max	10.580	10.360	10.420	10.360	10.360
stdev	0.117	0.100	0.137	0.139	0.133
average	10.279	10.121	10.082	10.056	10.046
+3S	10.630	10.422	10.493	10.472	10.444
-3S	9.928	9.820	9.671	9.640	9.648



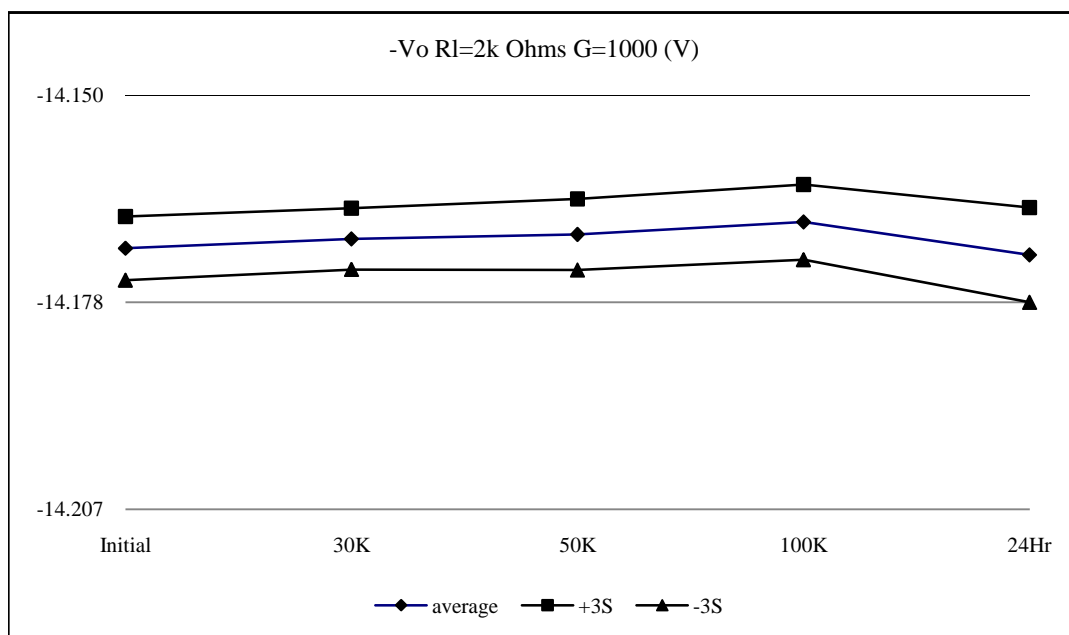
T# 35	+Vo Rl=2k Ohms G=1000				V
SN	Initial	30K	50K	100K	24Hr
3	13.888	13.889	13.888	13.888	13.888
4	13.878	13.866	13.862	13.862	13.865
5	13.890	13.877	13.873	13.872	13.875
6	13.889	13.877	13.873	13.872	13.875
7	13.884	13.871	13.867	13.867	13.870
8	13.886	13.873	13.869	13.869	13.870
9	13.891	13.877	13.874	13.874	13.876
10	13.881	13.868	13.864	13.864	13.866
13	13.852	13.861	13.862	13.864	13.862
14	13.887	13.873	13.868	13.868	13.870
15	13.891	13.877	13.873	13.872	13.874
min	13.852	13.861	13.862	13.862	13.862
max	13.891	13.877	13.874	13.874	13.876
stdev	0.012	0.006	0.005	0.004	0.005
average	13.883	13.872	13.869	13.868	13.870
+3S	13.918	13.889	13.883	13.881	13.885
-3S	13.848	13.855	13.854	13.856	13.856



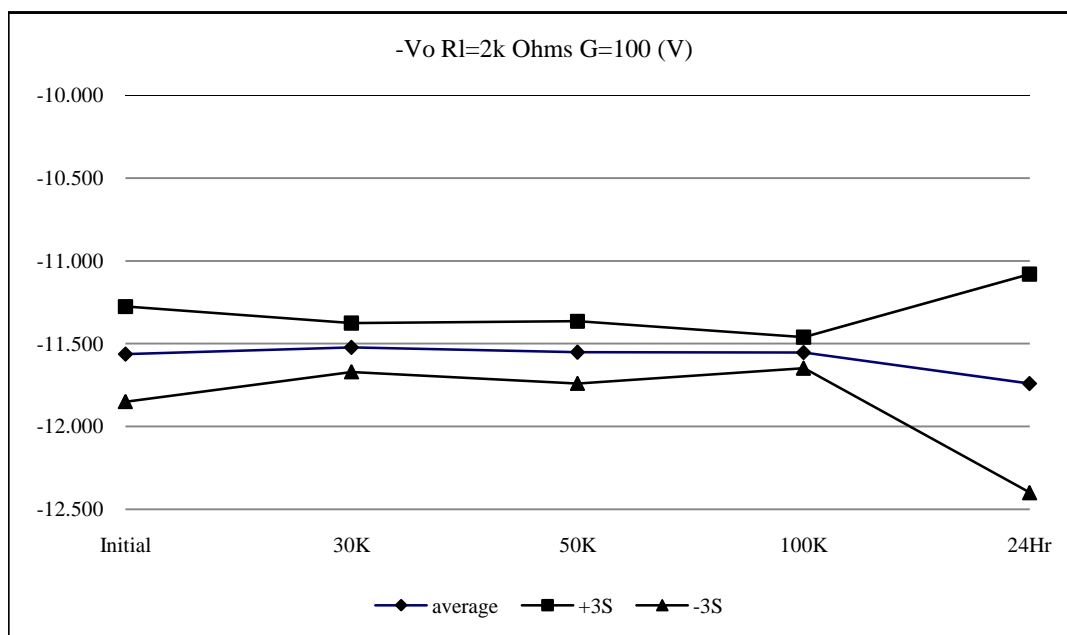
T# 35.1	+Vo RI=2k Ohms G=100				V
SN	Initial	30K	50K	100K	24Hr
3	11.546	11.562	11.503	11.596	11.472
4	11.562	11.567	11.607	11.585	11.578
5	11.523	11.523	11.583	11.542	11.512
6	11.542	11.536	11.524	11.549	11.642
7	11.549	11.546	11.620	11.520	12.072
8	11.527	11.503	11.496	11.519	12.016
9	11.536	11.510	11.485	11.546	12.037
10	11.556	11.522	11.509	11.548	11.667
13	11.579	11.507	11.564	11.570	11.611
14	11.545	11.660	11.531	11.517	11.583
15	11.844	11.550	11.699	11.522	11.583
min	11.523	11.503	11.485	11.517	11.512
max	11.844	11.660	11.699	11.585	12.072
stdev	0.096	0.046	0.067	0.023	0.219
average	11.576	11.542	11.562	11.542	11.730
+3S	11.863	11.681	11.762	11.611	12.388
-3S	11.290	11.404	11.362	11.473	11.072



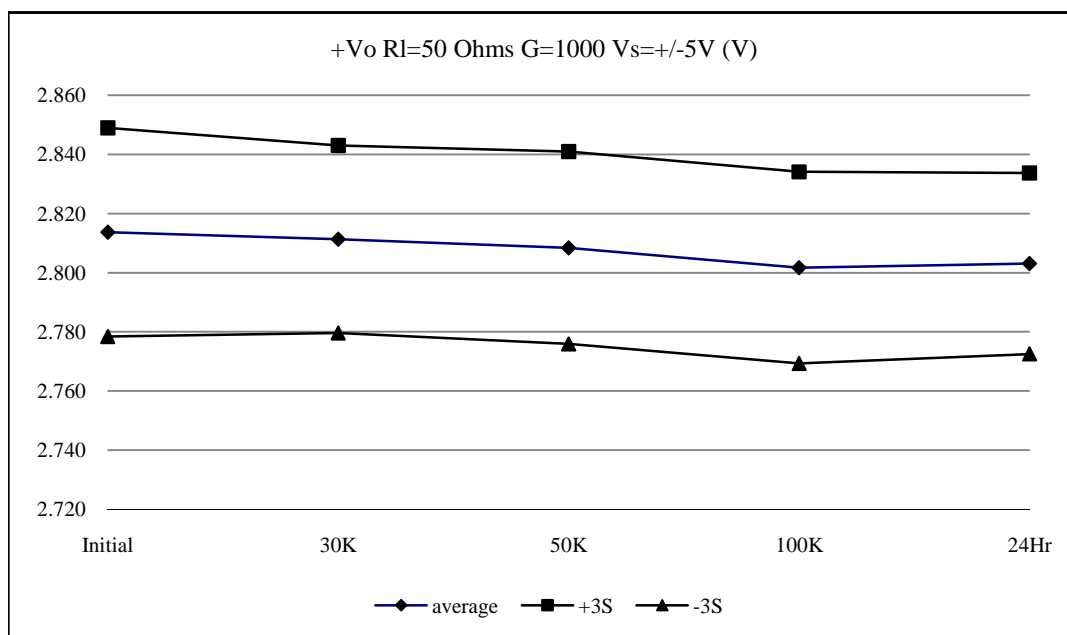
T# 36	-Vo RI=2k Ohms G=1000				V
SN	Initial	30K	50K	100K	24Hr
3	-14.171	-14.172	-14.172	-14.173	-14.170
4	-14.171	-14.167	-14.167	-14.166	-14.173
5	-14.172	-14.169	-14.168	-14.166	-14.176
6	-14.173	-14.170	-14.170	-14.167	-14.173
7	-14.170	-14.169	-14.168	-14.166	-14.170
8	-14.171	-14.169	-14.168	-14.165	-14.170
9	-14.173	-14.171	-14.172	-14.169	-14.174
10	-14.171	-14.170	-14.170	-14.169	-14.171
13	-14.168	-14.171	-14.168	-14.168	-14.169
14	-14.171	-14.170	-14.170	-14.170	-14.171
15	-14.171	-14.172	-14.171	-14.169	-14.173
min	-14.173	-14.172	-14.172	-14.170	-14.176
max	-14.168	-14.167	-14.167	-14.165	-14.169
stdev	0.001	0.001	0.002	0.002	0.002
average	-14.171	-14.170	-14.169	-14.168	-14.172
+3S	-14.167	-14.166	-14.164	-14.162	-14.166
-3S	-14.175	-14.174	-14.174	-14.173	-14.178



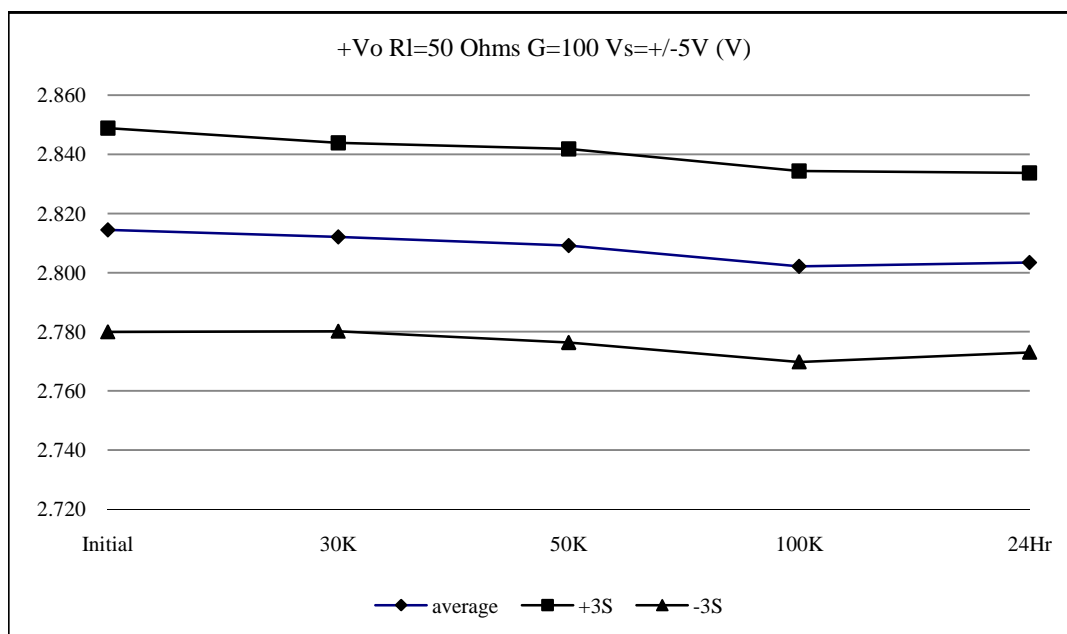
T# 36.1	-Vo RI=2k Ohms G=100				V
SN	Initial	30K	50K	100K	24Hr
3	-11.543	-11.560	-11.506	-11.602	-11.495
4	-11.551	-11.554	-11.586	-11.626	-11.600
5	-11.508	-11.497	-11.562	-11.545	-11.518
6	-11.538	-11.515	-11.509	-11.558	-11.660
7	-11.535	-11.515	-11.593	-11.519	-12.061
8	-11.515	-11.489	-11.506	-11.539	-12.043
9	-11.535	-11.494	-11.483	-11.572	-12.054
10	-11.547	-11.499	-11.491	-11.545	-11.675
13	-11.536	-11.488	-11.567	-11.578	-11.617
14	-11.535	-11.650	-11.537	-11.528	-11.588
15	-11.833	-11.529	-11.691	-11.534	-11.586
min	-11.833	-11.650	-11.691	-11.626	-12.061
max	-11.508	-11.488	-11.483	-11.519	-11.518
stdev	0.096	0.049	0.062	0.031	0.220
average	-11.563	-11.523	-11.553	-11.554	-11.740
+3S	-11.276	-11.376	-11.365	-11.461	-11.081
-3S	-11.850	-11.670	-11.740	-11.648	-12.400



T# 37	+Vo RI=50 Ohms G=1000 Vs=+/-5V				V
SN	Initial	30K	50K	100K	24Hr
3	2.829	2.828	2.828	2.828	2.829
4	2.831	2.832	2.829	2.823	2.820
5	2.806	2.807	2.804	2.799	2.795
6	2.826	2.824	2.821	2.814	2.816
7	2.813	2.810	2.807	2.800	2.803
8	2.807	2.803	2.800	2.793	2.796
9	2.808	2.806	2.802	2.796	2.797
10	2.808	2.806	2.803	2.796	2.799
13	2.833	2.821	2.820	2.812	2.816
14	2.803	2.803	2.800	2.792	2.795
15	2.802	2.801	2.798	2.792	2.794
min	2.802	2.801	2.798	2.792	2.794
max	2.833	2.832	2.829	2.823	2.820
stdev	0.012	0.011	0.011	0.011	0.010
average	2.814	2.811	2.808	2.802	2.803
+3S	2.849	2.843	2.841	2.834	2.834
-3S	2.778	2.780	2.776	2.769	2.772

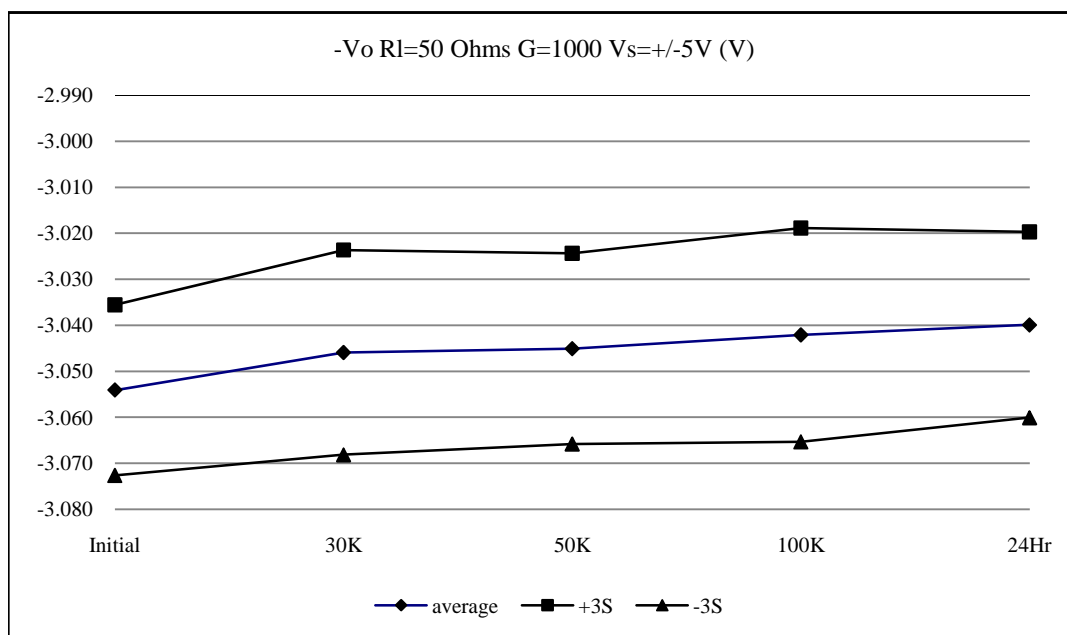


T# 37.1	+Vo Rl=50 Ohms G=100 Vs=+/-5V				V
SN	Initial	30K	50K	100K	24Hr
3	2.830	2.829	2.828	2.828	2.830
4	2.831	2.833	2.830	2.823	2.821
5	2.807	2.807	2.805	2.799	2.796
6	2.827	2.825	2.822	2.815	2.816
7	2.814	2.811	2.808	2.801	2.804
8	2.808	2.804	2.800	2.793	2.797
9	2.809	2.807	2.803	2.797	2.797
10	2.808	2.807	2.804	2.796	2.799
13	2.833	2.821	2.820	2.812	2.815
14	2.804	2.803	2.800	2.792	2.795
15	2.803	2.802	2.799	2.793	2.794
min	2.803	2.802	2.799	2.792	2.794
max	2.833	2.833	2.830	2.823	2.821
stdev	0.011	0.011	0.011	0.011	0.010
average	2.814	2.812	2.809	2.802	2.803
+3S	2.849	2.844	2.842	2.834	2.834
-3S	2.780	2.780	2.776	2.770	2.773





T# 38	-Vo RI=50 Ohms G=1000 Vs=+-5V				V
SN	Initial	30K	50K	100K	24Hr
3	-3.054	-3.053	-3.053	-3.053	-3.055
4	-3.051	-3.045	-3.044	-3.041	-3.036
5	-3.052	-3.048	-3.047	-3.045	-3.038
6	-3.065	-3.058	-3.056	-3.054	-3.051
7	-3.056	-3.048	-3.047	-3.045	-3.043
8	-3.059	-3.051	-3.051	-3.048	-3.046
9	-3.059	-3.051	-3.048	-3.046	-3.044
10	-3.047	-3.037	-3.036	-3.032	-3.032
13	-3.050	-3.037	-3.039	-3.034	-3.035
14	-3.045	-3.035	-3.034	-3.030	-3.030
15	-3.057	-3.049	-3.049	-3.046	-3.044
min	-3.065	-3.058	-3.056	-3.054	-3.051
max	-3.045	-3.035	-3.034	-3.030	-3.030
stdev	0.006	0.007	0.007	0.008	0.007
average	-3.054	-3.046	-3.045	-3.042	-3.040
+3S	-3.036	-3.024	-3.024	-3.019	-3.020
-3S	-3.073	-3.068	-3.066	-3.065	-3.060



T# 38.1	-Vo RI=50 Ohms G=100 Vs=+/-5V				V
SN	Initial	30K	50K	100K	24Hr
3	-3.052	-3.051	-3.050	-3.050	-3.052
4	-3.048	-3.042	-3.041	-3.038	-3.033
5	-3.050	-3.045	-3.044	-3.043	-3.035
6	-3.063	-3.055	-3.053	-3.051	-3.048
7	-3.054	-3.046	-3.044	-3.042	-3.040
8	-3.057	-3.049	-3.048	-3.046	-3.044
9	-3.056	-3.048	-3.046	-3.044	-3.042
10	-3.044	-3.034	-3.033	-3.029	-3.030
13	-3.049	-3.036	-3.036	-3.032	-3.033
14	-3.042	-3.032	-3.030	-3.026	-3.027
15	-3.055	-3.047	-3.046	-3.043	-3.042
min	-3.063	-3.055	-3.053	-3.051	-3.048
max	-3.042	-3.032	-3.030	-3.026	-3.027
stdev	0.006	0.007	0.007	0.008	0.007
average	-3.052	-3.043	-3.042	-3.039	-3.037
+3S	-3.033	-3.021	-3.021	-3.015	-3.017
-3S	-3.071	-3.065	-3.064	-3.063	-3.058

