

RADIATION TEST REPORT

PRODUCT:	REF01AZQMLR
GAMMA:	0,100k
GAMMA SOURCE:	Co60
DOSE RATE:	39.11 Rad(si)/s
FACILITIES:	National Semiconductor Santa Clara, Ca.
TESTED:	1/13/2005

The RADTESTSM DATA SERVICE is a compilation of radiation test results on Analog Devices' Space grade products. It is designed to assist customers in selecting the right product for applications where radiation is a consideration. Many products manufactured by Analog Devices, Inc. have been shown to be radiation tolerant to most tactical radiation environments. Analog Devices, Inc. does not make any claim to maintain or guarantee these levels of radiation tolerance without lot qualification test.

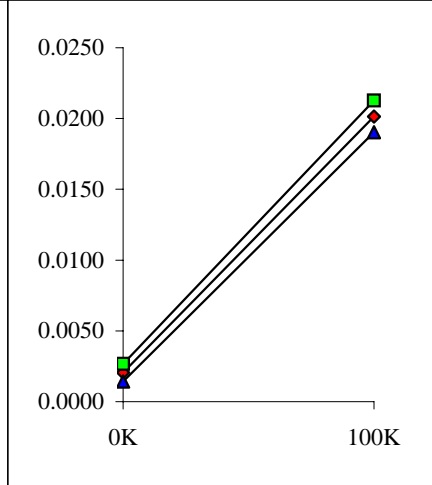
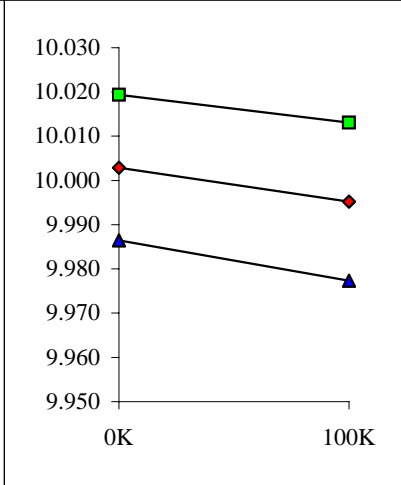
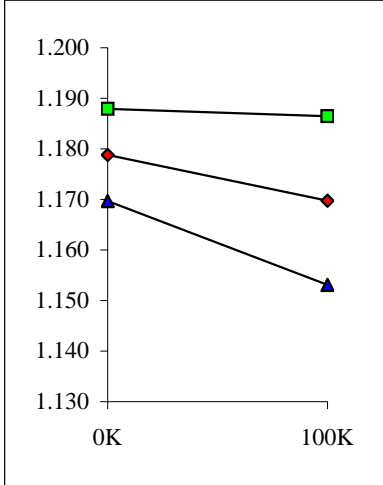
It is the responsibility of the Procuring Activity to screen products from Analog Devices, Inc. for compliance to Nuclear Hardness Critical Items (HCI) specifications.

WARNING:

Analog Devices, Inc. does not recommend use of this data to qualify other product grades or process levels. Analog Devices, Inc. is not responsible and has no liability for any consequences, and all applicable Warranties are null and void if any Analog product is modified in any way or used outside of normal environmental and operating conditions, including the parameters specified in the corresponding data sheet. Analog Devices, Inc. does not guarantee that wafer manufacturing is the same for all process levels.



T#1.0	ISY ,Vin=15V	mA	T# 2.0	VOUT @Vin=15V	V	T# 3.0	LN.REG 13V TO 33V	%/V
SN	OK	100K	SN	OK	100K	SN	OK	100K
1	1.189	1.182	1	10.013	10.012	1	0.0024	0.0024
2	1.180	1.177	2	10.000	9.992	2	0.0018	0.0201
3	1.178	1.170	3	10.005	9.994	3	0.0021	0.0206
4	1.175	1.163	4	9.997	9.991	4	0.0020	0.0202
5	1.182	1.170	5	10.010	10.004	5	0.0023	0.0197
min	1.175	1.163	min	9.997	9.991	min	0.0018	0.0197
max	1.182	1.177	max	10.010	10.004	max	0.0023	0.0206
stdev	0.003	0.006	stdev	0.005	0.006	stdev	0.0002	0.0004
average	1.179	1.170	average	10.003	9.995	average	0.0021	0.0202
+3S	1.188	1.186	+3S	10.019	10.013	+3S	0.0027	0.0213
-3S	1.170	1.153	-3S	9.986	9.977	-3S	0.0014	0.0190



T# 4.0	LD. REG 0 TO 10mA	%/mA
SN	OK	100K
1	0.0020	0.0060
2	-0.0002	0.0040
3	0.0021	0.0056
4	0.0023	0.0035
5	0.0035	0.0029
min	-0.0002	0.0029
max	0.0035	0.0056
stdev	0.0015	0.0012
average	0.0019	0.0040
+3S	0.0066	0.0075
-3S	-0.0027	0.0005

