

RADIATION TEST REPORT

PRODUCT: PM155AZQMLR

MASK:

FILE:

DATE CODE:

GAMMA: 0, 100K

GAMMA SOURCE: Co60

DOSE RATE: 48.97 rad/sec

FACILITIES: National Semiconductor
Sunnyvale, Ca.

TESTED: May 1, 2003

The RADTESTSM DATA SERVICE is a compilation of radiation test results on Analog Devices' Space grade products. It is designed to assist customers in selecting the right product for applications where radiation is a consideration. Many products manufactured by Analog Devices, Inc. have been shown to be radiation tolerant to most tactical radiation environments, Analog Devices, Inc. does not make any claim to maintain or guarantee these levels of radiation tolerance without lot qualification test.

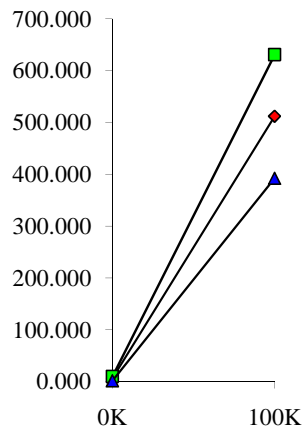
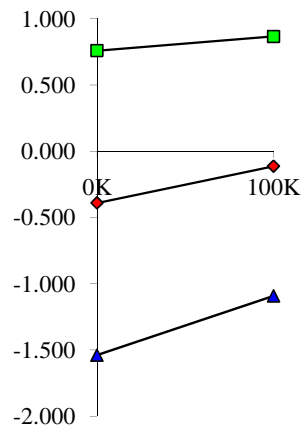
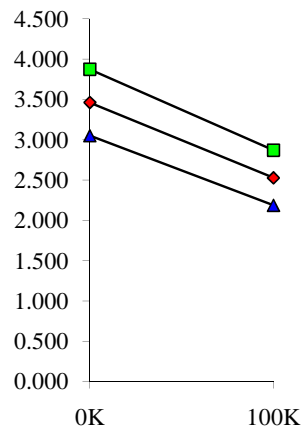
It is the responsibility of the Procuring Activity to screen products from Analog Devices, Inc. for compliance to Nuclear Hardness Critical Items (HCI) specifications.

WARNING:

Analog Devices, Inc. does not recommend use of this data to qualify other product grades or process levels. Analog Devices, Inc. is not responsible and has no liability for any consequences, and all applicable Warranties are null and void, if any Analog product is modified in any way or used outside of normal environmental and operating conditions, including the parameters specified in the corresponding data sheet. Analog Devices does not guarantee that wafer manufacturing is the same for all process levels.



T# 3	ICC	mA	T#5	VIO	mV	T# 6	IIB+	pA
SN	0K	100K	SN	0K	100K	SN	0K	100K
20	3.588	3.603	20	-0.279	-0.272	20	6.268	5.096
21	3.630	2.676	21	-0.123	0.096	21	3.948	542.772
22	3.502	2.534	22	-0.314	-0.073	22	5.670	517.502
23	3.312	2.405	23	-0.953	-0.587	23	5.638	531.648
24	3.397	2.488	24	-0.174	0.110	24	7.166	453.833
min	3.312	2.405	min	-0.953	-0.587	min	3.948	453.833
max	3.630	2.676	max	-0.123	0.110	max	7.166	542.772
stdev	0.137	0.114	stdev	0.383	0.326	stdev	1.315	39.772
average	3.460	2.526	average	-0.391	-0.114	average	5.606	511.439
+3S	3.872	2.866	+3S	0.759	0.866	+3S	9.551	630.754
-3S	3.048	2.185	-3S	-1.541	-1.093	-3S	1.660	392.124



T# 7	IIB-	pA	T# 8	IIO	pA	T# 9	AVS	V/mV
SN	0K	100K	SN	0K	100K	SN	0K	100K
20	4.838	-1.378	20	1.430	6.474	20	363	366
21	4.725	514.815	21	-0.777	27.957	21	394	251
22	4.680	498.173	22	0.990	19.329	22	365	233
23	4.650	504.943	23	0.987	26.705	23	367	244
24	5.260	438.632	24	1.906	15.201	24	361	236
min	4.650	438.632	min	-0.777	15.201	min	361	233
max	5.260	514.815	max	1.906	27.957	max	394	251
stdev	0.289	34.359	stdev	1.122	6.073	stdev	15	8
average	4.829	489.141	average	0.777	22.298	average	372	241
+3S	5.696	592.217	+3S	4.144	40.516	+3S	417	265
-3S	3.961	386.064	-3S	-2.591	4.080	-3S	327	217

