

RADIATION TEST REPORT

PRODUCT: DAC08R000C

MASK:

FILE:

DATE CODE:

GAMMA: 0,100K

GAMMA SOURCE: Co60

DOSE RATE: 39.95 rad/sec

FACILITIES: National Semiconductor
Santa Clara, Ca.

TESTED: 15-Nov-04

The RADTESTSM DATA SERVICE is a compilation of radiation test results on Analog Devices' Space grade products. It is designed to assist customers in selecting the right product for applications where radiation is a consideration. Many products manufactured by Analog Devices, Inc. have been shown to be radiation tolerant to most tactical radiation environments, Analog Devices, Inc. does not make any claim to maintain or guarantee these levels of radiation tolerance without lot qualification test.

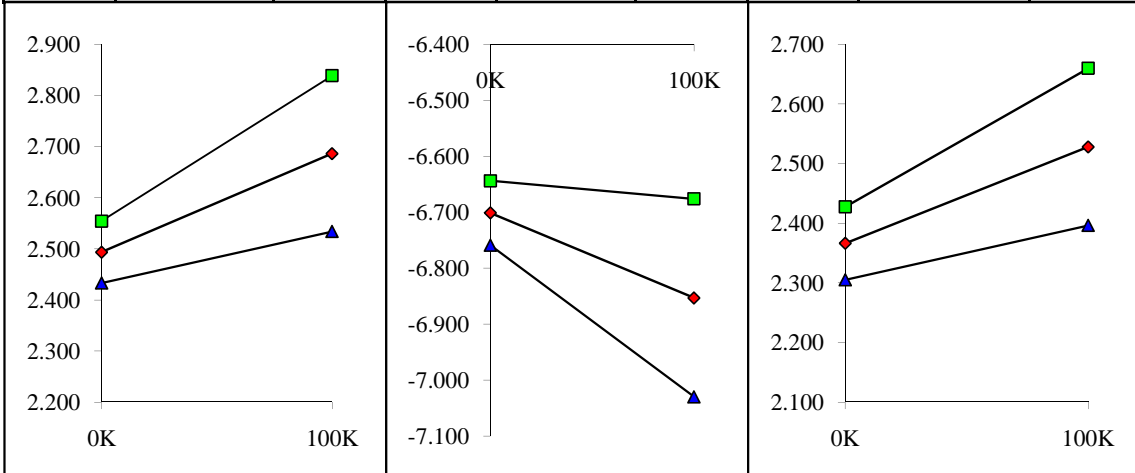
It is the responsibility of the Procuring Activity to screen products from Analog Devices, Inc. for compliance to Nuclear Hardness Critical Items (HCI) specifications.

WARNING:

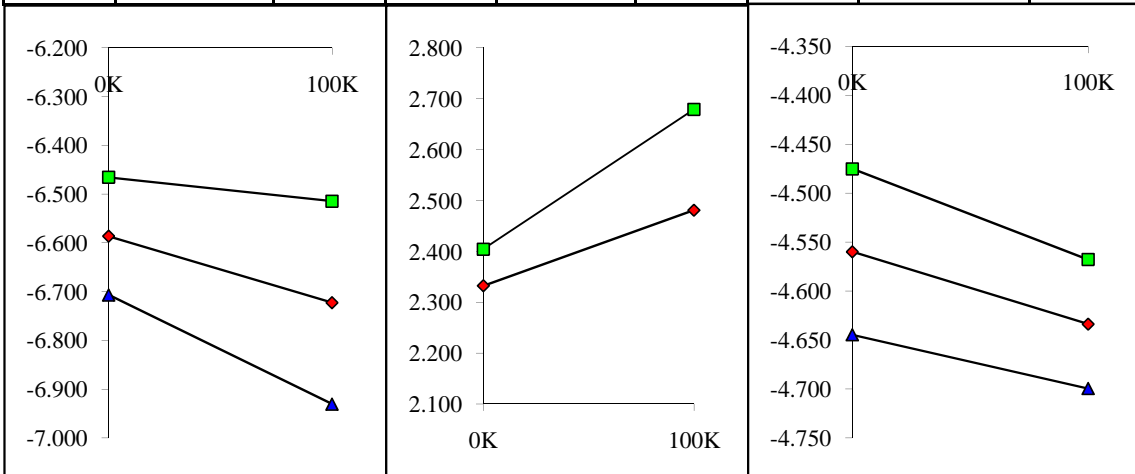
Analog Devices, Inc. does not recommend use of this data to qualify other product grades or process levels. Analog Devices, Inc. is not responsible and has no liability for any consequences, and all applicable Warranties are null and void, if any Analog product is modified in any way or used outside of normal environmental and operating conditions, including the parameters specified in the corresponding data sheet. Analog Devices does not guarantee that wafer manufacturing is the same for all process levels.



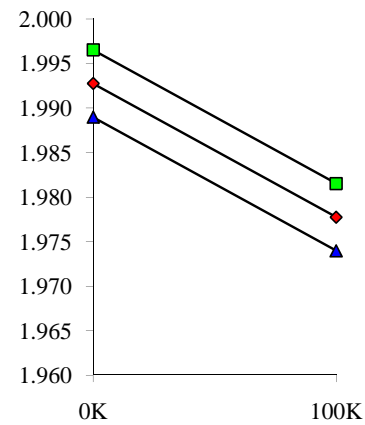
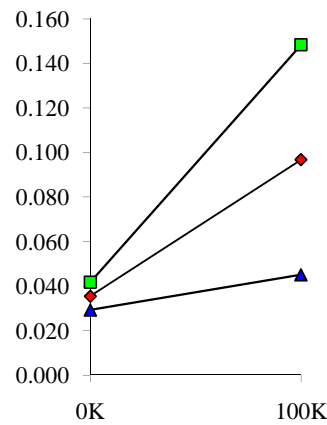
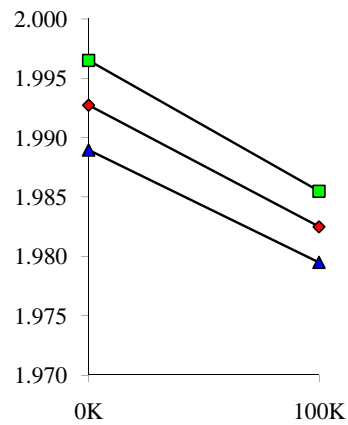
T#1.0	ISY+,@+15V	mA	T# 2.0	ISY-,@+15V	mA	T# 3.0	ISY+,Vs=5V,-15V	mA
SN	0K	100K	SN	0K	100K	SN	0K	100K
1	2.489	2.541	1	-6.690	-6.713	1	2.378	2.366
2	2.512	2.733	2	-6.730	-6.928	2	2.389	2.542
3	2.467	2.637	3	-6.690	-6.815	3	2.349	2.463
4	2.506	2.727	4	-6.690	-6.871	4	2.378	2.559
5	2.489	2.648	5	-6.696	-6.798	5	2.349	2.548
min	2.467	2.637	min	-6.730	-6.928	min	2.349	2.463
max	2.512	2.733	max	-6.690	-6.798	max	2.389	2.559
stdev	0.020	0.051	stdev	0.019	0.059	stdev	0.020	0.044
average	2.494	2.686	average	-6.702	-6.853	average	2.366	2.528
+3S	2.554	2.839	+3S	-6.644	-6.676	+3S	2.428	2.660
-3S	2.433	2.534	-3S	-6.759	-7.030	-3S	2.305	2.396



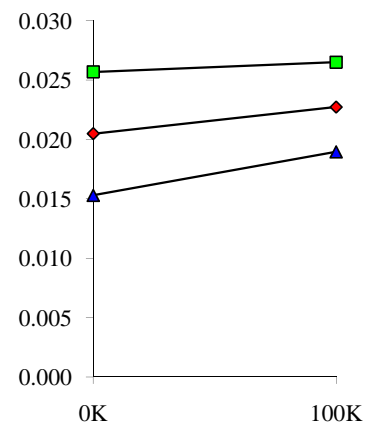
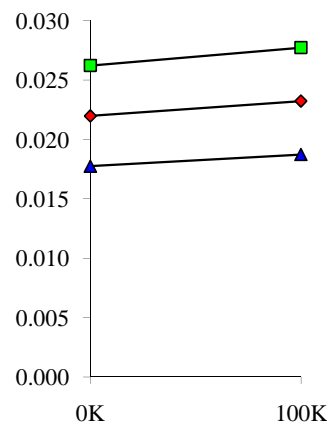
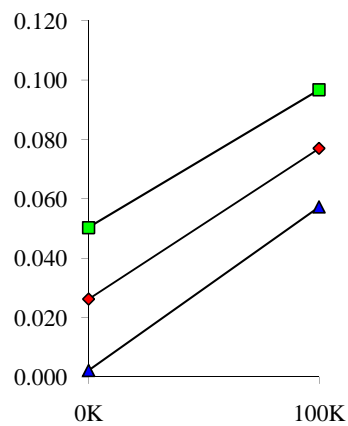
T# 4.0	ISY-,Vs=5V,-15V	mA	T# 5.0	ISY+,Vs=+5V	mA	T# 6.0	ISY-,Vs=+5V	mA
SN	0K	100K	SN	0K	100K	SN	0K	100K
1	-6.645	-6.645	1	2.349	2.361	1	-4.593	-4.581
2	-6.616	-6.803	2	2.349	2.502	2	-4.542	-4.644
3	-6.531	-6.645	3	2.321	2.383	3	-4.530	-4.655
4	-6.616	-6.752	4	2.355	2.514	4	-4.581	-4.604
5	-6.582	-6.690	5	2.304	2.525	5	-4.587	-4.632
min	-6.616	-6.803	min	2.304	2.383	min	-4.587	-4.655
max	-6.531	-6.645	max	2.355	2.525	max	-4.530	-4.604
stdev	0.040	0.069	stdev	0.024	0.066	stdev	0.028	0.022
average	-6.586	-6.723	average	2.332	2.481	average	-4.560	-4.634
+3S	-6.466	-6.515	+3S	2.404	2.679	+3S	-4.475	-4.568
-3S	-6.707	-6.930	-3S	2.260	2.283	-3S	-4.645	-4.700



T# 7.0	IFR4, Vs=+-15V	mA	T# 8.0	IZS	uA	T# 9.0	IFR4*, Vs=+-15V	mA
SN	0K	100K	SN	0K	100K	SN	0K	100K
1	1.989	1.989	1	0.017	0.022	1	1.989	1.989
2	1.994	1.983	2	0.035	0.077	2	1.994	1.978
3	1.993	1.983	3	0.038	0.096	3	1.993	1.979
4	1.991	1.981	4	0.036	0.119	4	1.991	1.976
5	1.993	1.983	5	0.033	0.095	5	1.993	1.978
min	1.991	1.981	min	0.033	0.077	min	1.991	1.976
max	1.994	1.983	max	0.038	0.119	max	1.994	1.979
stdev	0.001	0.001	stdev	0.002	0.017	stdev	0.001	0.001
average	1.993	1.983	average	0.036	0.097	average	1.993	1.978
+3S	1.997	1.986	+3S	0.042	0.148	+3S	1.997	1.982
-3S	1.989	1.980	-3S	0.029	0.045	-3S	1.989	1.974

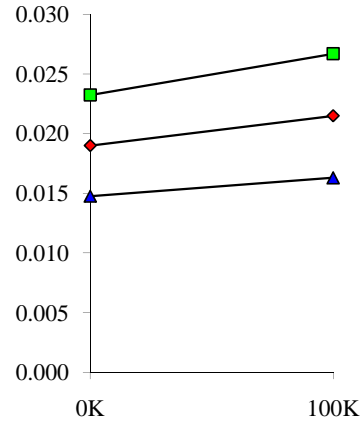
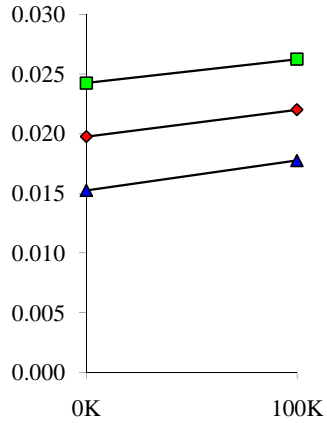
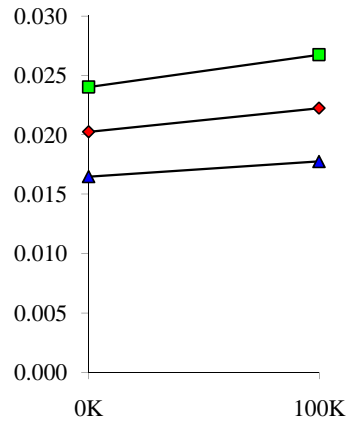


T# 10.0	IZS*	uA	T# 11.0	IIH VL=18V	uA	T# 12.0	IIH VL=18V	uA
SN	0K	100K	SN	0K	100K	SN	0K	100K
1	0.044	0.000	1	0.021	0.020	1	0.020	0.019
2	0.038	0.076	2	0.024	0.024	2	0.023	0.023
3	0.023	0.069	3	0.021	0.024	3	0.019	0.023
4	0.024	0.085	4	0.022	0.024	4	0.020	0.024
5	0.020	0.078	5	0.021	0.021	5	0.020	0.021
min	0.020	0.069	min	0.021	0.021	min	0.019	0.021
max	0.038	0.085	max	0.024	0.024	max	0.023	0.024
stdev	0.008	0.007	stdev	0.001	0.002	stdev	0.002	0.001
average	0.026	0.077	average	0.022	0.023	average	0.021	0.023
+3S	0.050	0.097	+3S	0.026	0.028	+3S	0.026	0.027
-3S	0.002	0.057	-3S	0.018	0.019	-3S	0.015	0.019

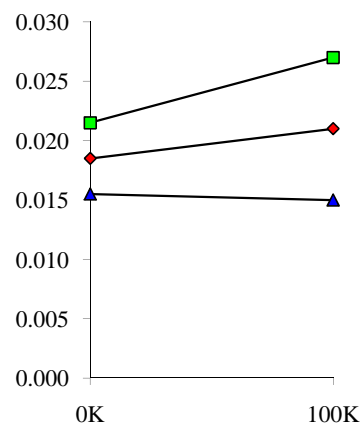
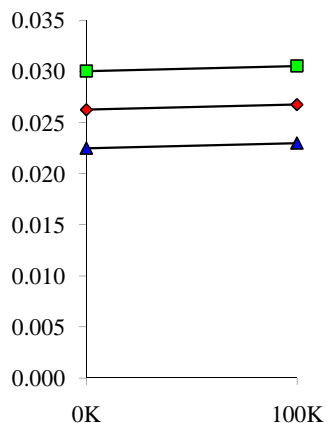
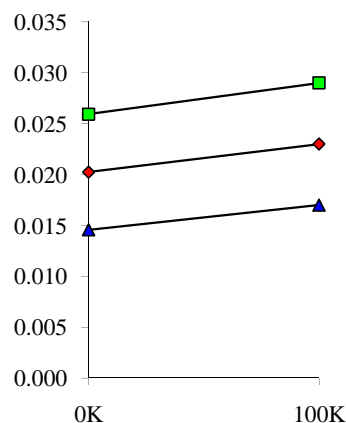


T# 13.0	IIH VL=18V	uA	T# 14.0	IIH VL=18V	uA	T# 15.0	IIH VL=18V	uA
---------	------------	----	---------	------------	----	---------	------------	----

SN	0K	100K	SN	0K	100K	SN	0K	100K
1	0.019	0.019	1	0.019	0.018	1	0.018	0.018
2	0.022	0.023	2	0.022	0.022	2	0.021	0.022
3	0.020	0.023	3	0.019	0.023	3	0.018	0.022
4	0.020	0.023	4	0.019	0.023	4	0.018	0.023
5	0.019	0.020	5	0.019	0.020	5	0.019	0.019
min	0.019	0.020	min	0.019	0.020	min	0.018	0.019
max	0.022	0.023	max	0.022	0.023	max	0.021	0.023
stdev	0.001	0.002	stdev	0.002	0.001	stdev	0.001	0.002
average	0.020	0.022	average	0.020	0.022	average	0.019	0.022
+3S	0.024	0.027	+3S	0.024	0.026	+3S	0.023	0.027
-3S	0.016	0.018	-3S	0.015	0.018	-3S	0.015	0.016

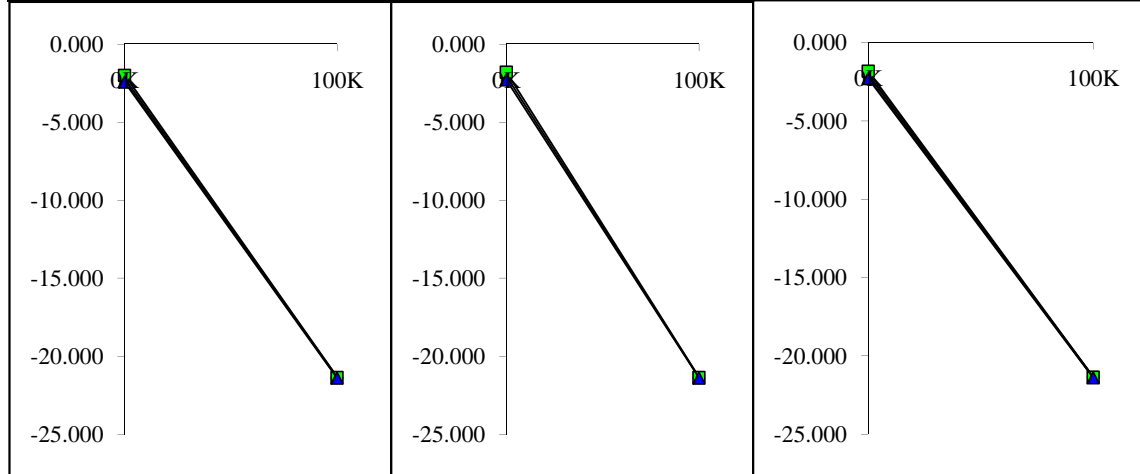


T# 16.0	IIH VL=18V	uA	T# 17.0	IIH VL=18V	uA	T# 18.0	IIH VL=18V	uA
SN	0K	100K	SN	0K	100K	SN	0K	100K
1	0.019	0.019	1	0.026	0.023	1	0.018	0.017
2	0.023	0.024	2	0.028	0.027	2	0.020	0.022
3	0.020	0.024	3	0.026	0.028	3	0.018	0.022
4	0.019	0.024	4	0.026	0.027	4	0.018	0.022
5	0.019	0.020	5	0.025	0.025	5	0.018	0.018
min	0.019	0.020	min	0.025	0.025	min	0.018	0.018
max	0.023	0.024	max	0.028	0.028	max	0.020	0.022
stdev	0.002	0.002	stdev	0.001	0.001	stdev	0.001	0.002
average	0.020	0.023	average	0.026	0.027	average	0.019	0.021
+3S	0.026	0.029	+3S	0.030	0.031	+3S	0.022	0.027
-3S	0.015	0.017	-3S	0.022	0.023	-3S	0.016	0.015

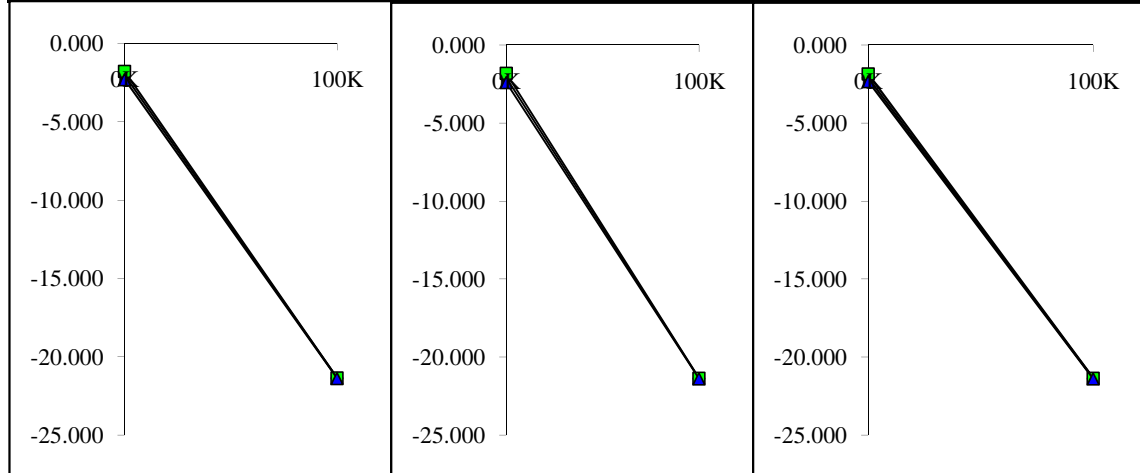


T# 19.0	IIH VL=-10V	uA	T# 20.0	IIH VL=-10V	uA	T# 21.0	IIH VL=-10V	uA
SN	0K	100K	SN	0K	100K	SN	0K	100K

1	-2.045	-2.043	1	-1.923	-1.920	1	-1.862	-1.859
2	-2.282	-21.370	2	-2.037	-21.370	2	-2.159	-21.370
3	-2.220	-21.370	3	-2.098	-21.370	3	-2.037	-21.370
4	-2.109	-21.375	4	-1.926	-21.375	4	-1.987	-21.375
5	-2.232	-21.381	5	-2.109	-21.381	5	-2.109	-21.381
min	-2.282	-21.381	min	-2.109	-21.381	min	-2.159	-21.381
max	-2.109	-21.370	max	-1.926	-21.370	max	-1.987	-21.370
stdev	0.073	0.005	stdev	0.084	0.005	stdev	0.076	0.005
average	-2.211	-21.374	average	-2.043	-21.374	average	-2.073	-21.374
+3S	-1.992	-21.358	+3S	-1.791	-21.358	+3S	-1.845	-21.358
-3S	-2.430	-21.390	-3S	-2.294	-21.390	-3S	-2.301	-21.390

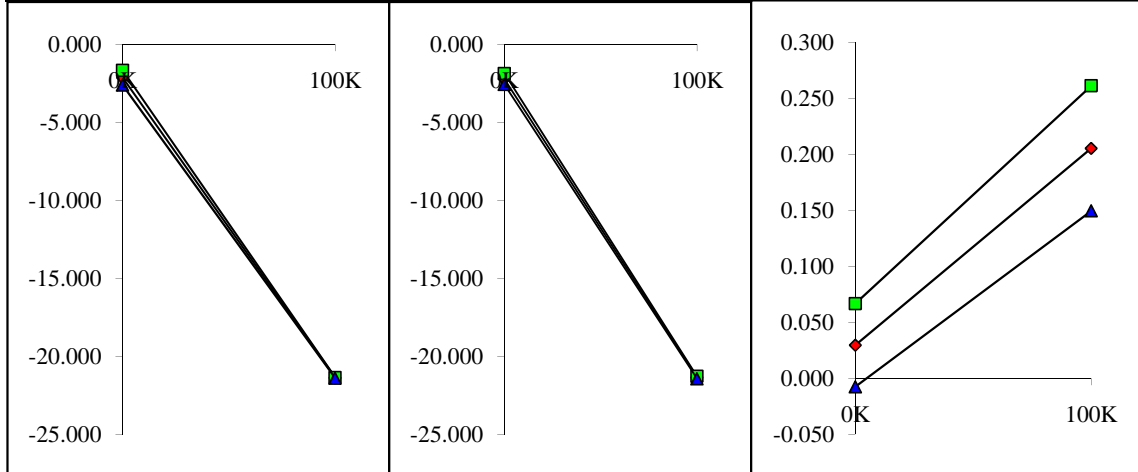


T# 22.0	IIL VL=-10V	uA	T# 23.0	IIL VL=-10V	uA	T# 24.0	IIL VL=-10V	uA
SN	0K	100K	SN	0K	100K	SN	0K	100K
1	-1.923	-1.859	1	-1.923	-1.982	1	-1.984	-1.982
2	-2.098	-21.370	2	-2.220	-21.370	2	-2.159	-21.370
3	-2.098	-21.370	3	-2.159	-21.370	3	-2.159	-21.370
4	-1.926	-21.375	4	-1.987	-21.375	4	-1.987	-21.375
5	-2.109	-21.381	5	-2.109	-21.381	5	-2.109	-21.381
min	-2.109	-21.381	min	-2.220	-21.381	min	-2.159	-21.381
max	-1.926	-21.370	max	-1.987	-21.370	max	-1.987	-21.370
stdev	0.088	0.005	stdev	0.099	0.005	stdev	0.081	0.005
average	-2.058	-21.374	average	-2.119	-21.374	average	-2.104	-21.374
+3S	-1.794	-21.358	+3S	-1.822	-21.358	+3S	-1.860	-21.358
-3S	-2.322	-21.390	-3S	-2.415	-21.390	-3S	-2.347	-21.390



T# 25.0	IIL VL=-10V	uA	T# 26.0	IIL VL=-10V	uA	T# 27.0	NL+	%FS
SN	0K	100K	SN	0K	100K	SN	0K	100K
1	-1.984	-1.982	1	-2.106	-2.104	1	0.050	0.057

2	-2.282	-21.370	2	-2.282	-21.370	2	0.031	0.187
3	-2.220	-21.370	3	-2.282	-21.370	3	0.012	0.192
4	-1.926	-21.375	4	-2.048	-21.375	4	0.040	0.220
5	-2.170	-21.381	5	-2.293	-21.320	5	0.036	0.223
min	-2.282	-21.381	min	-2.293	-21.375	min	0.012	0.187
max	-1.926	-21.370	max	-2.048	-21.320	max	0.040	0.223
stdev	0.156	0.005	stdev	0.119	0.026	stdev	0.012	0.019
average	-2.150	-21.374	average	-2.226	-21.359	average	0.030	0.206
+3S	-1.682	-21.358	+3S	-1.869	-21.281	+3S	0.067	0.261
-3S	-2.617	-21.390	-3S	-2.583	-21.437	-3S	-0.007	0.150



T# 28.0	NL-	%FS	T# 29.0	NL+*	%FS	T# 30.0	NL-*	%FS
SN	0K	100K	SN	0K	100K	SN	0K	100K
1	-0.052	-0.049	1	0.052	0.053	1	-0.054	-0.055
2	-0.037	-0.188	2	0.034	0.228	2	-0.031	-0.225
3	-0.012	-0.189	3	0.016	0.227	3	-0.016	-0.228
4	-0.046	-0.223	4	0.043	0.248	4	-0.044	-0.255
5	-0.039	-0.230	5	0.037	0.254	5	-0.036	-0.253
min	-0.046	-0.230	min	0.016	0.227	min	-0.044	-0.255
max	-0.012	-0.188	max	0.043	0.254	max	-0.016	-0.225
stdev	0.015	0.022	stdev	0.012	0.014	stdev	0.012	0.016
average	-0.034	-0.208	average	0.033	0.239	average	-0.032	-0.240
+3S	0.011	-0.141	+3S	0.067	0.281	+3S	0.004	-0.192
-3S	-0.078	-0.274	-3S	-0.002	0.198	-3S	-0.067	-0.288

