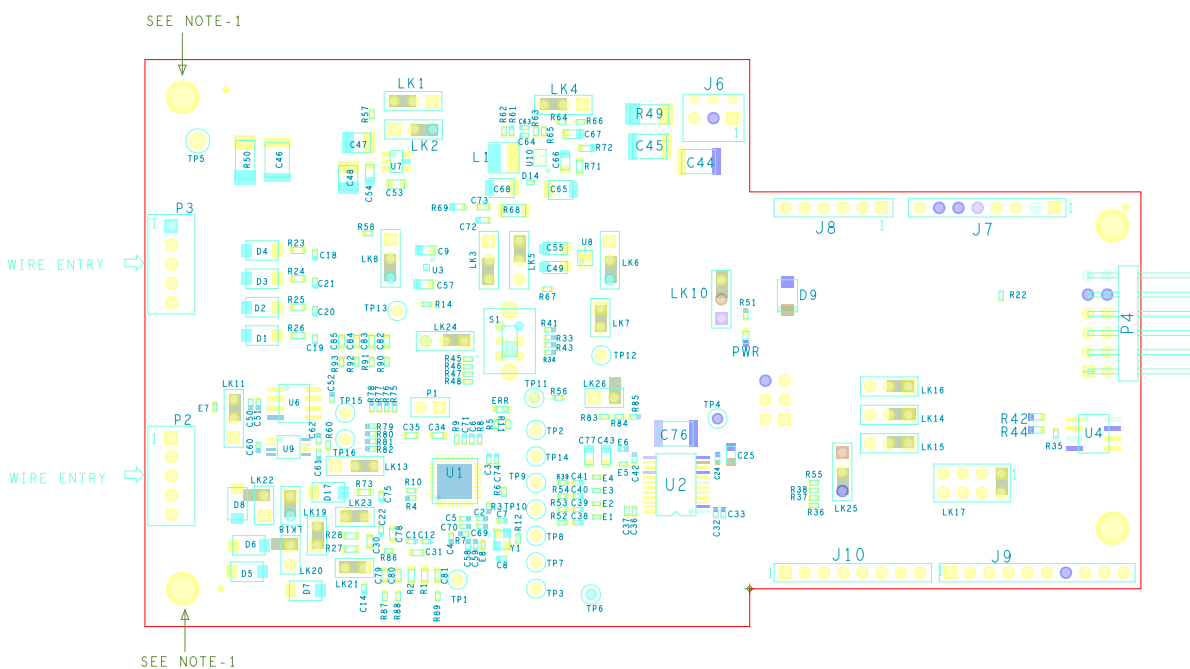


PRIMARY SIDE

REVISION			
REV	DESCRIPTION	DATE	APPROVED
A	INITIAL RELEASE		



ASSEMBLY NOTES:

- Supply standoffs & screws (x2) in sealed plastic bag.
- Insert shunts as shown in drawing - refer to table below.

LINK	TYPE	POSITION
LK1	2.54mm Black	Position B
LK2	2.54mm Black	Position B
LK3	2.54mm Black	Position B
LK4	2.54mm Black	Position B
LK5	2.54mm Black	Position A
LK6	2.54mm Black	Position B
LK7	2.54mm Black	Insert on both pins
LK8	2.54mm Black	Position B
LK10	2.54mm Black	Position A
LK11	2.54mm Black	Position B
LK12	2.54mm Black	Insert on both pins
LK13	2.54mm Black	Position B
LK14	2.54mm Black	Position A
LK15	2.54mm Black	Position A
LK16	2.54mm Black	Position A
LK17	2.54mm Black	Position A
LK18	2.54mm Black	Inserted
LK19	2.54mm Black	Insert on both pins
LK20	2.54mm Black	Insert on one pin only
LK21	2.54mm Black	Insert on both pins
LK22	2.54mm Black	Insert on one pin only
LK23	2.54mm Black	Insert on both pins
LK24	2.54mm Black	Position A
LK25	2.54mm Black	Position B
LK26	2.54mm Black	Insert on one pin only

- Set Switch S1 to "SINGLE" position.
- Do not trim leads of J7 J8 J9 J10 J11

UNLESS OTHERWISE SPECIFIED DIMENSIONS ARE IN MM TOLERANCES DECIMALS FRACTIONS ANGLES .XX +/-0.25    .X +/-0.50    .X +/-1.00	ASSEMBLY		ANALOG DEVICES INTERNATIONAL ERDC Building Raheen Business Park Raheen, LIMERICK, IRELAND	
	MATERIAL	APPROVAL DESIGNED CHECKED	DATE 03AUG2023	TITLE EVAL - AD4113ARDZ
FINISH	APPROVED MFG ENGINEER	SIZE A4	FSCM NO	DRAWING NUMBER 01-072892
DO NOT SCALE DWG		SCALE 1/1		REV B
				SHEET 1 OF 2

4

3

2

1

SECONDARY SIDE

D

D

C

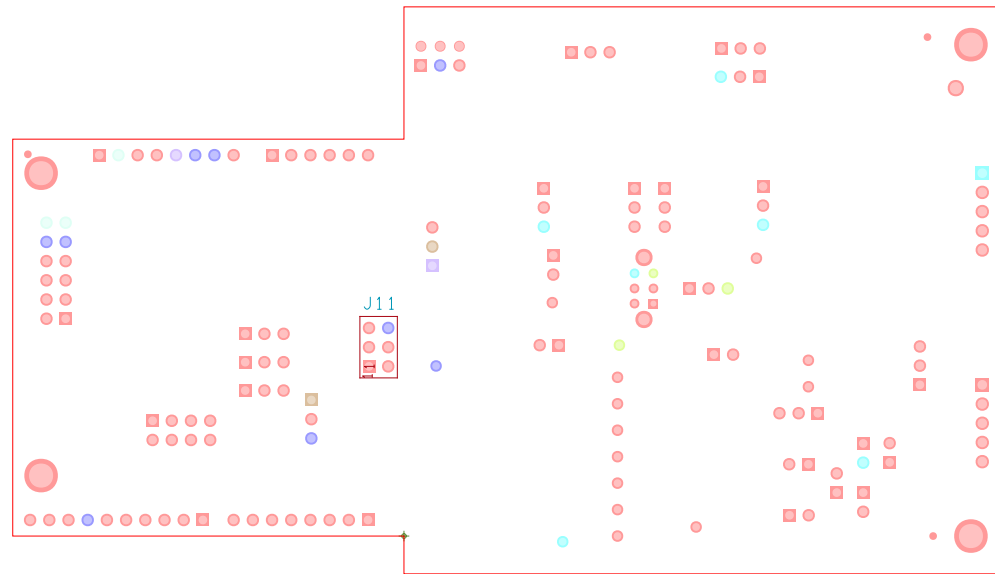
C

B

B

A

A



		ANALOG DEVICES INTERNATIONAL ERDC Building Raheen Business Park Raheen, LIMERICK, IRELAND	
		SIZE	FSCM NO
A4		01-072892	B
SCALE	1/1	SHEET 2 OF 2	

4

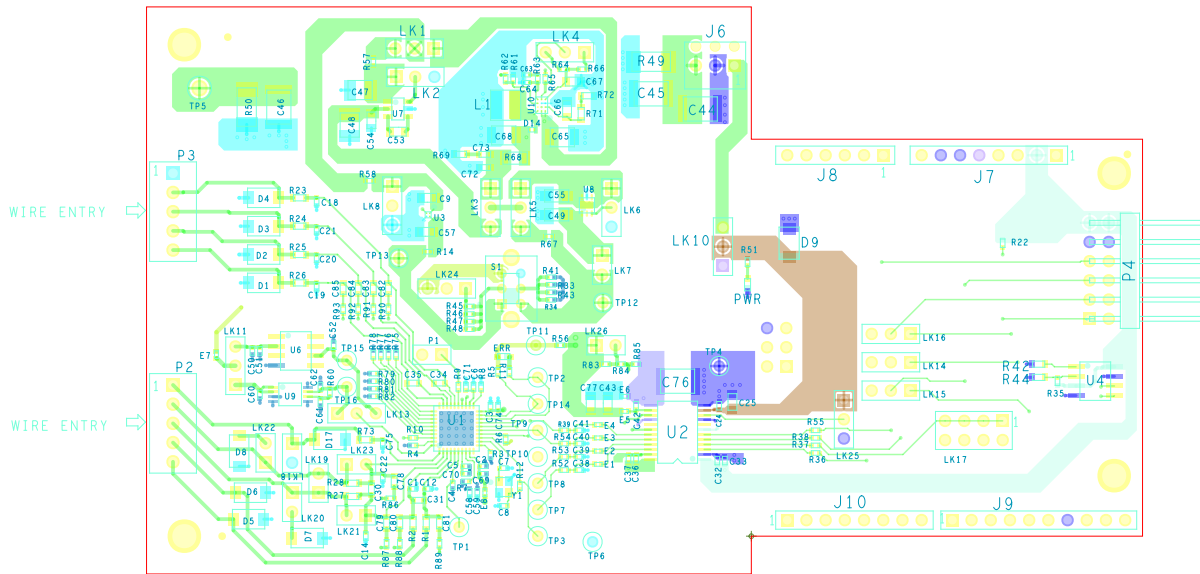
3

2

1



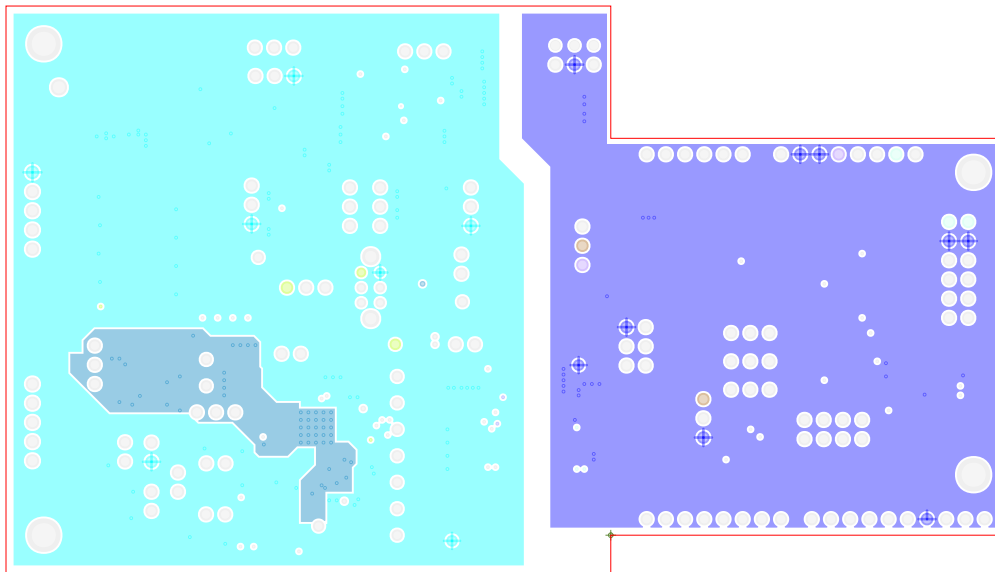
L1 PRIMARY  
08-072892-01  
EVAL-AD4113ARDZ REV B



L2 Internal GND

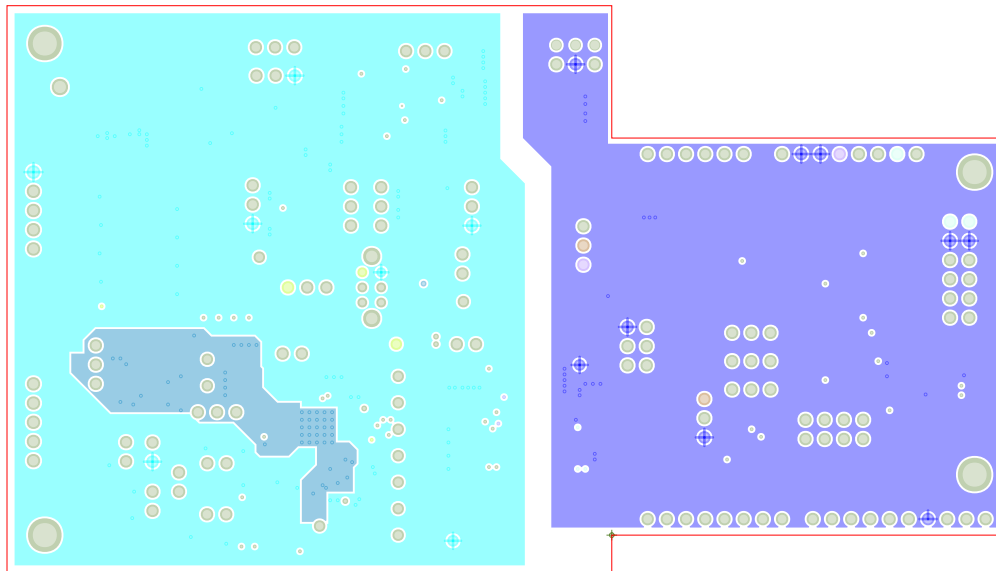
08-072892-07

EVAL-AD4113ARDZ REV B



L3 POWER/GROUND  
08-072892-08

EVAL-AD4113ARDZ REV B

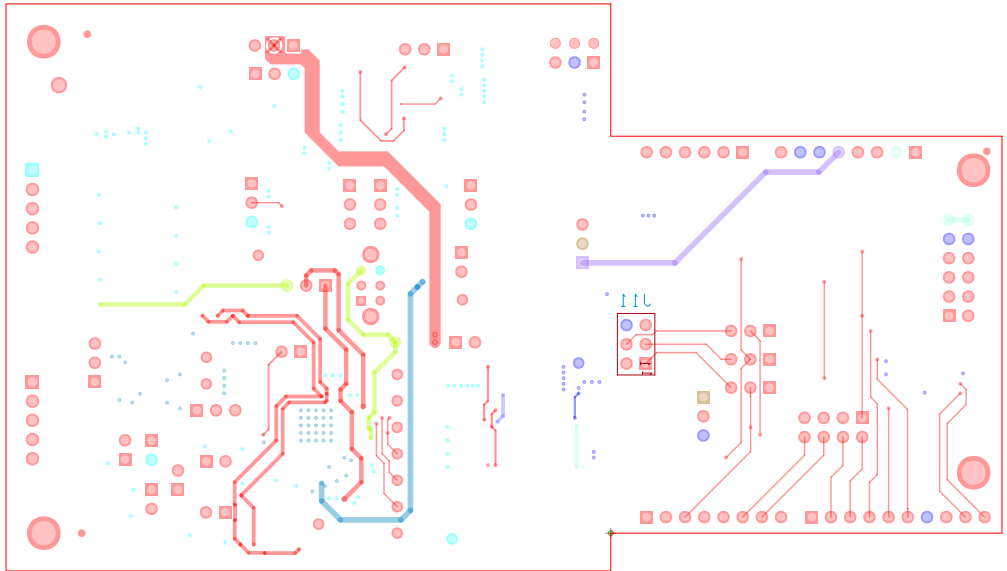


ART FILM - L4\_secondary

L4 SECONDARY

08-072892-02

EVAL-AD4113ARDZ REV B

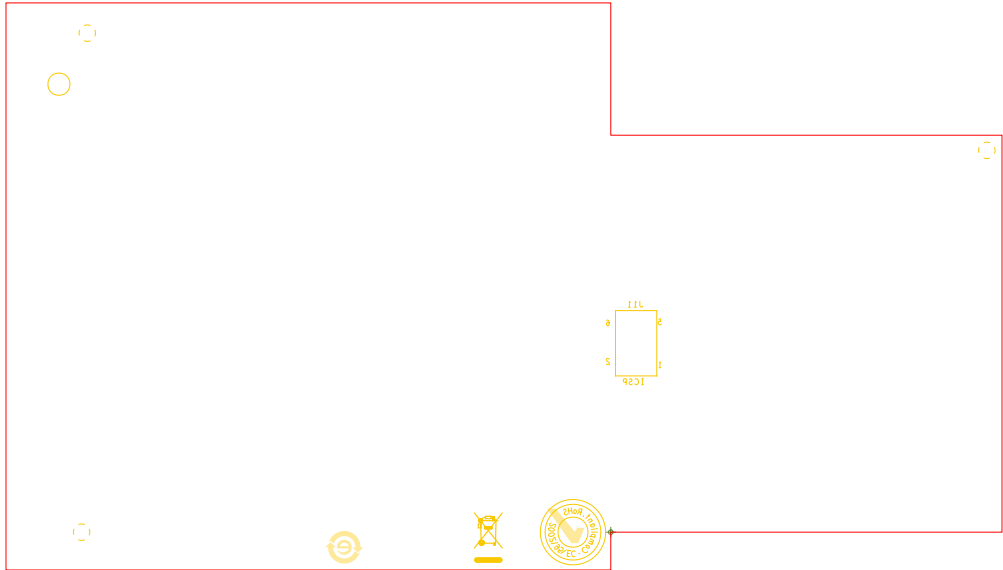


ART FILM - L4\_secondary

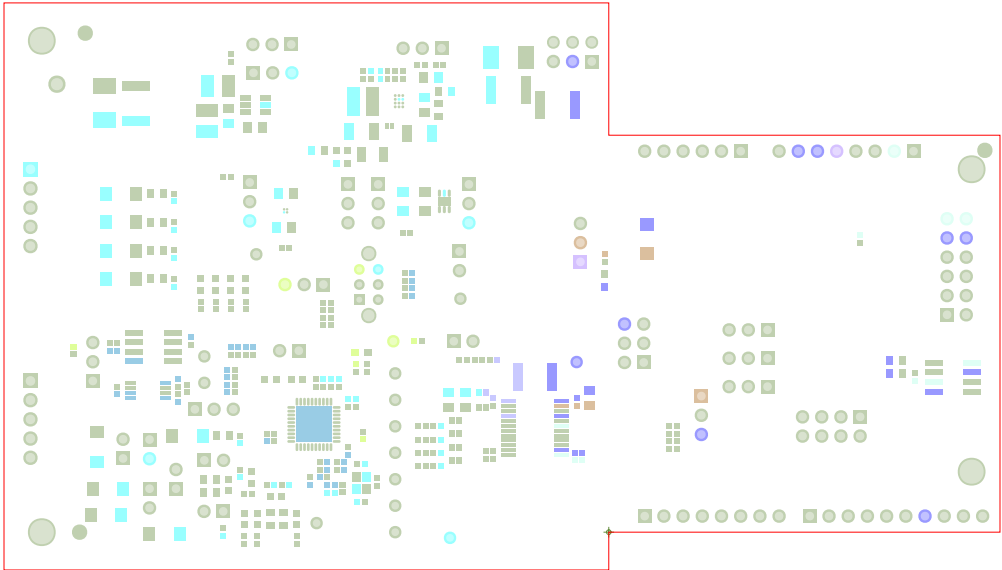
SILKSCREEN SECONDARY

08-072892-05

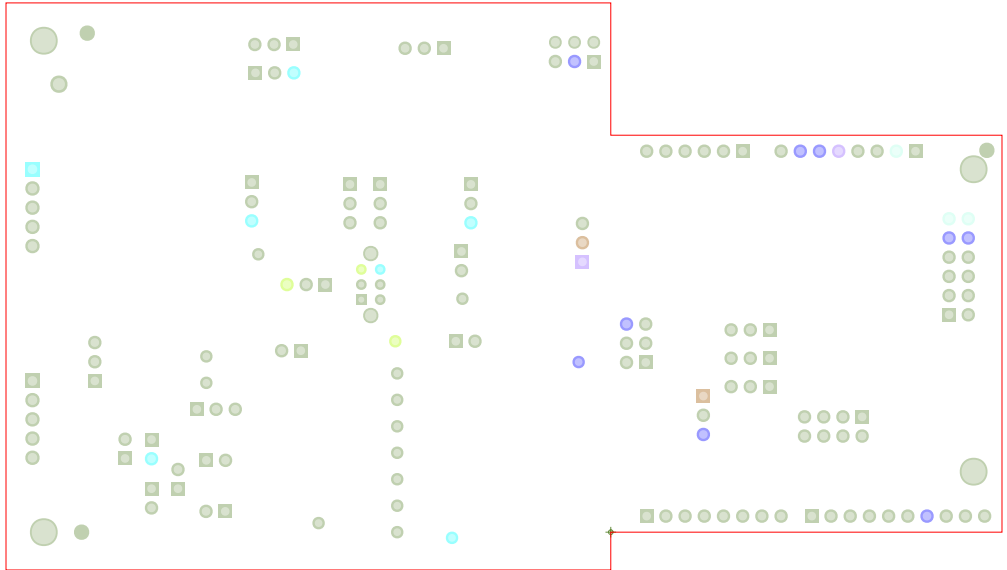
EVAL-AD4113ARDZ REV B



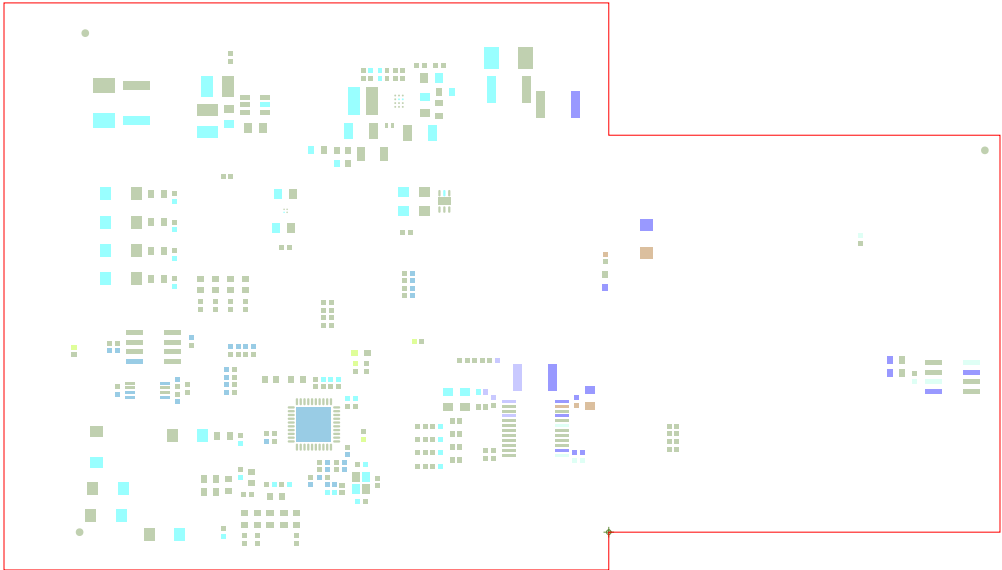
SOLDERMASK PRIMARY  
08-072892-04  
EVAL-AD4113ARDZ REV B



SOLDERMASK SECONDARY  
08-072892-06  
EVAL-AD4113ARDZ REV B



PASTEMASK PRIMARY  
08-072892-09  
EVAL-AD4113ARDZ REV B

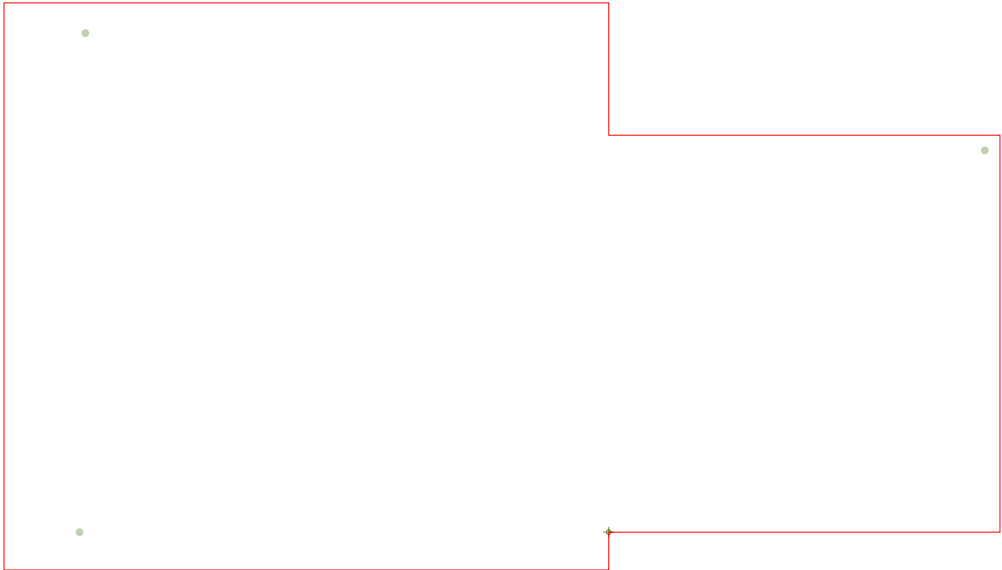


ART FILM - paste\_sec

PASTEMASK SECONDARY

08-072892-10

EVAL-AD4113ARDZ REV B



ART FILM - paste\_sec

PRIMARY SIDE

REVISION			
REV	DESCRIPTION	DATE	APPROVED
A	INITIAL RELEASE		

SPECIFICATIONS:

**MATERIALS:** HOMOGENOUS MATERIALS IN THIS BOARD SHALL BE COMPLIANT THE EU RoHS DIRECTIVE 2002/95/EC ALL LAMINATES AND BONDING MATERIALS SHOULD BE SELECTED FROM IPC-4101 OR IPC-4103, MINIMUM Tg>130degC, Td>300degC, U.L. RATING OF 94 V-0

**MATERIAL FAMILY:** ISOLA 370HR OR EQUIVALENT

**CLADDING:** EXTERNAL LAYERS .5 OZ. COPPER, OVERPLATE TO 1.5 OZ. INTERNAL SIGNAL LAYERS .5 OZ. COPPER. INTERNAL PLANE LAYERS 1 OZ. COPPER.  
NOTE: IF THE LAYER STACKUP CONFLICTS WITH THE ABOVE CLADDING SPECIFICATIONS THEN THE LAYER STACKUP SHALL TAKE PRECEDENCE.

**SOLDER MASK:** SHALL BE LIQUID PHOTOIMAGEABLE (LPI) APPLIED ON BOTH SIDES OVER BARE COPPER OR GOLD AND SHALL MEET IPC-SM-840 (LATEST REV.) CLASS 3. COLOR GREEN.

**SILK SCREEN:** SHALL BE PERMANENT NON-CONDUCTIVE EPOXY INK, COLOR: WHITE SYNTHETIC INKJET PRINTING ALLOWED FOR DENSE BOARDS, COLOR: WHITE

**SURFACE FINISH:** ENIG (Electroless Nickel/Immersion Gold) 2.54um (100 MICRO INCHES) NICKEL/ 0.0762um - 0.127um (3-5 MICRO INCHES) GOLD

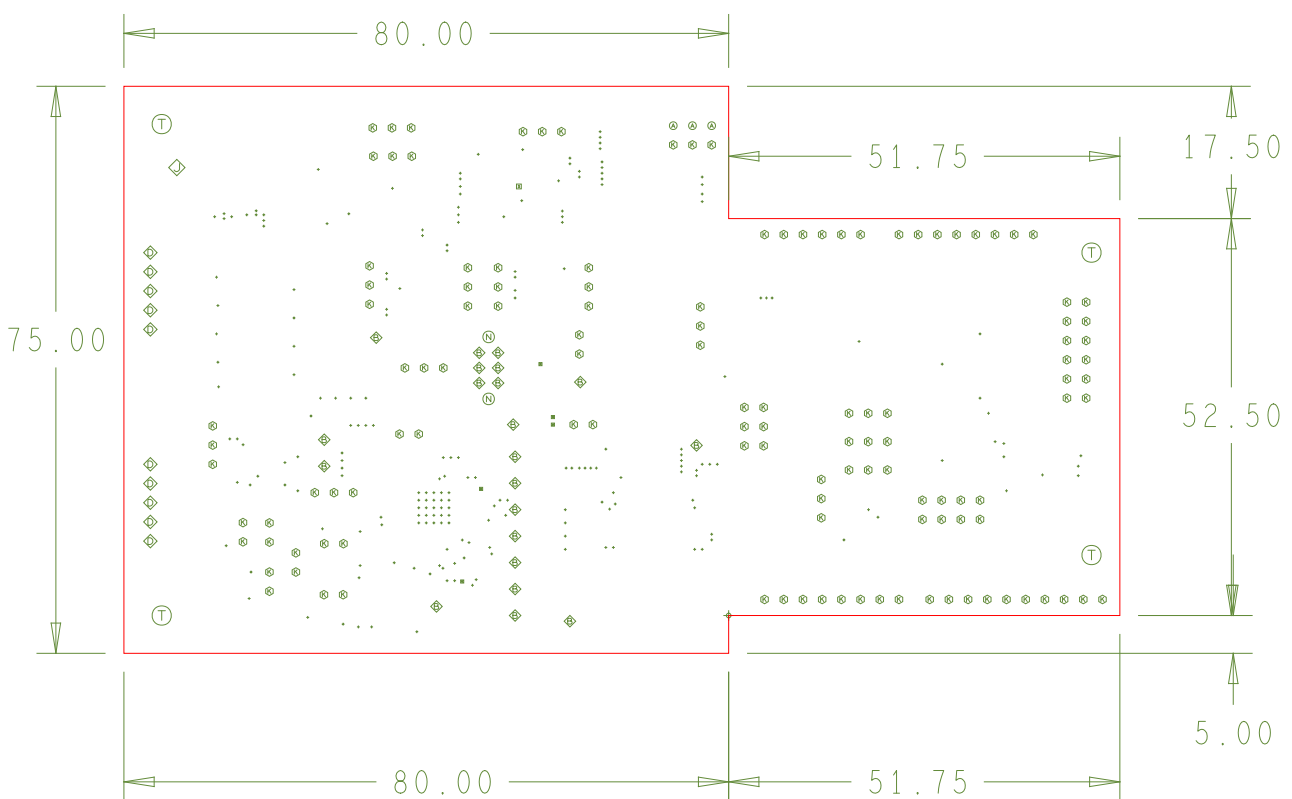
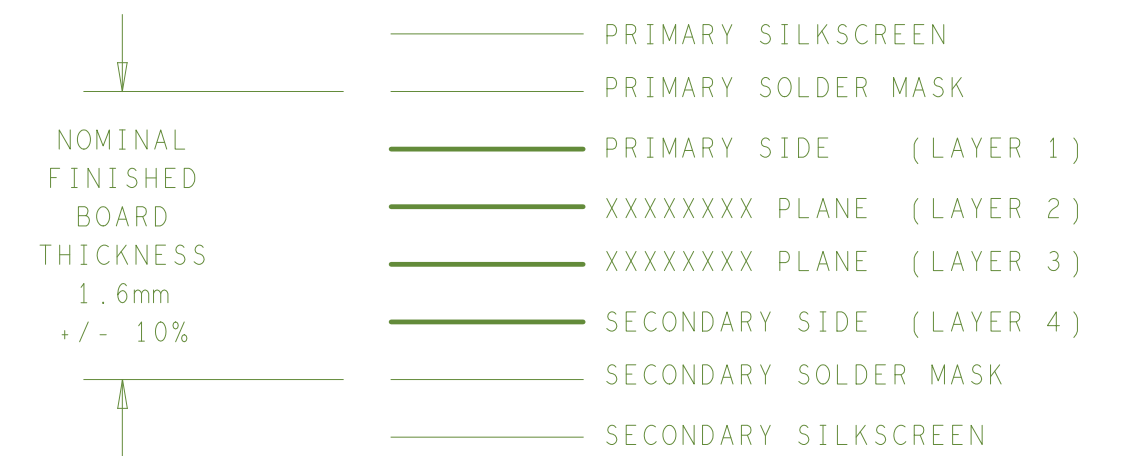
**INTENTIONAL SHORTS:** IF SUPPLIED DATA INCLUDES A FILE "READ\_ME.2", THEN INTENTIONAL NET SHORTS EXIST. CUSTOMER REVIEW AND APPROVAL IS REQUIRED IF SUPPLIED DATA REPORTS ANY CONDITION THAT DOES NOT MATCH "READ\_ME.2" FILE PROVIDED.

**TEST REQUIREMENTS:** 100% NETLIST ELECTRICAL VERIFICATION USING CUSTOMER SUPPLIED IPC-D-356 NETLIST FOR OPENS AND SHORTS WHEN "GERBER DATA" IS PROVIDED. THIS VERIFICATION ALSO REQUIRED FOR "ODB++" DATA PER EMBEDDED NETLIST.

REQUIREMENTS:

- REFER TO IPC-6010 SERIES (LATEST REV.), CLASS 2 FOR FABRICATION UNLESS OTHERWISE SPECIFIED.
- ACCEPTABILITY PER ANALOG DEVICES, INC. SPECIFICATION TST00115. (LATEST REVISION.)
- MODIFICATIONS TO THE ARTWORK ARE NOT ALLOWED WITHOUT WRITTEN AUTHORIZATION.
- HOLE PATTERN TOLERANCES FOR UNDIMENSIONED HOLES SHALL BE A DIAMETER OF 0.127mm (0.005 INCHES) FROM THEIR TRUE POSITION.
- PLATED HOLE WALL THICKNESS SHALL NOT BE LESS THAN 25um (0.001 INCH) MINIMUM AVERAGE, WITH NO READING LESS THAN 20um (.0008) BY CROSS SECTION.
- HOLE DIAMETERS APPLY AFTER PLATING.
- FINISHED CONDUCTOR WIDTHS SHALL NOT BE REDUCED FROM THE NOMINAL INDICATED ON THE MASTER PATTERN, BY MORE THAN THE CONDUCTOR THICKNESS.
- MINIMUM DESIGN LINE WIDTH IS 0.15mm
- MINIMUM DESIGN SPACING IS 0.145
- NON-FUNCTIONAL PAD REMOVAL FROM INNER SIGNAL LAYERS MAY BE PERFORMED AFTER CUSTOMER APPROVAL.
- IF PAD SIZES PROVIDED ARE NOT LARGE ENOUGH TO MAINTAIN ANNULAR RING REQUIREMENT, MFG. MAY REQUEST APPROVAL TO TEAR DROP PADS TO MAINTAIN ANNULAR RING. (AT PAD TO TRACE INTERSECTION ONLY AND ELECTRICAL INTEGRITY MUST BE MAINTAINED.)
- THIEVING MAY BE ADDED TO COMPENSATE FOR LOW COPPER DENSITY AREAS ON THIS DESIGN ONLY AFTER REVIEW AND APPROVAL FROM THE CUSTOMER:
  - THIEVING TO CARD EDGE, FIDUCIALS, NON-PLATED THROUGH HOLES, ALL OTHER FEATURES TO BE 5.08MM (0.200 INCH) MINIMUM.
  - THERE SHALL BE NO THIEVING IN ANY AREAS FREE OF SOLDER MASK OR INTERNAL COPPER PLANES.
- MFG. TO LEGIBLY ETCH OR STAMP/SCREEN WITH PERMANENT NON-CONDUCTIVE INK ON SECONDARY SIDE IN A CLEAR AREA UNLESS OTHERWISE INDICATED:
  - U.L. CODE-FLAMMABILITY RATING
  - DATE CODE (STAMP).
  - LOT NUMBER
  - MFGR LOGO
  - SUCCESSFUL ELECTRICAL TEST.
- REPAIRS PER IPC-7711/21 (LATEST REV.) ARE ALLOWED.
- THRU VIAS FILLED WITH NON-CONDUCTIVE EPOXY AND PLATED OVER. COPLANAR ON BOTH SIDES WITHIN .001 INCH PRIOR TO FINAL PLATING.

4 LAYER STACKUP



**HOLE TOLERANCE**  
UNLESS SPECIFIED  
PLATED: +/- .003  
NON PLATED: +/- .001

DRILL CHART: TOP +o BOTTOM			
ALL UNITS ARE IN MILLIMETERS			
FIGURE	FINISHED SIZE	PLATED	QTY
▪	0.1524	PLATED	1
•	0.254	PLATED	214
•	0.4064	PLATED	5
◆	0.7874	PLATED	6
◆	1.016	PLATED	15
•	1.143	PLATED	124
◆	1.27	PLATED	10
◆	1.6002	PLATED	1
•	1.1938	NON-PLATED	3
⊙	1.524	NON-PLATED	2
⊙	3.18	NON-PLATED	4

UNLESS OTHERWISE SPECIFIED DIMENSIONS ARE IN MM TOLERANCES DECIMALS FRACTIONS ANGLES .01 -0.05 .001 0.001 0.001		FABRICATION APPROVAL DATE		TITLE	
MATERIAL		DATE		EVAL - AD4113ARDZ	
FINISH		SIZE	FSCM NO	DRAWING NUMBER	REV
DO NOT SCALE DWG		A2		09-072892	B
		SCALE	1/1	SHEET 1 OF 1	