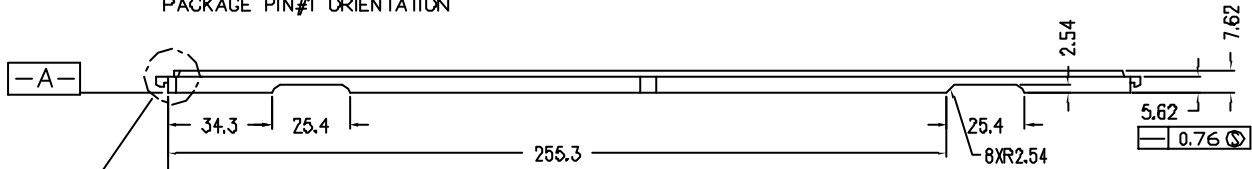


NOTES :

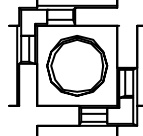
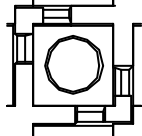
1. MATERIAL - PP6.
2. ALL DIMENSIONS ARE IN MILLIMETERS.
3. TOLERANCES - X.X=±0.25
- X.XX=±0.13
DRAFT ANGLES FOR REFERENCES, UNLESS OTHERWISE SPECIFIED.
4. ESD - SURFACE RESISTIVITY
- 10⁵ TO 10¹¹ OHMS/SQ.
5. FOR PACKAGE - QFN5X5
6. PART NO. : TX QFN0505 1.0 1435 6 REV.C
(PLEASE INDICATE ON PURCHASE ORDER).



SEE DETAIL D

bottom view of cell

top view of cell



REV. NO.	ECN #	DESCRIPTION	DATE
0		RELEASED FOR PRODUCTION	08 MAY 02

THIS DOCUMENT CONTAINS INFORMATION PROPRIETARY TO PEAK PLASTIC & METAL PRODUCTS INTERNATIONAL LIMITED. REPRODUCTION, DISCLOSURE OR USE OF THIS DOCUMENT IS EXPRESSLY PROHIBITED EXCEPT IF OTHERWISE AGREED UPON IN WRITING.

DRAWN BY : FORD	PAGE 1 OF 2
CHECKED BY :	DATE : 08 MAY 02
APPROVED BY :	DATE : 08 MAY 02
APPROVED BY :	DATE : 09 MAY 02
DO NOT SCALE DRAWING	CCDE : CSA08269

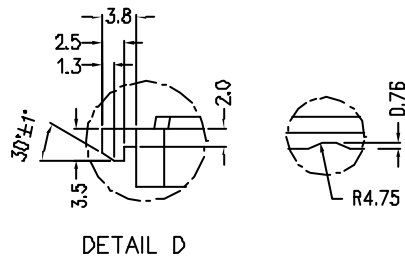
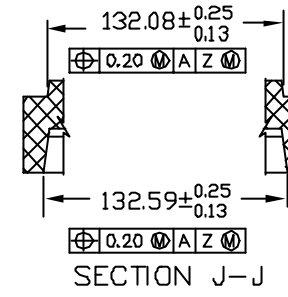
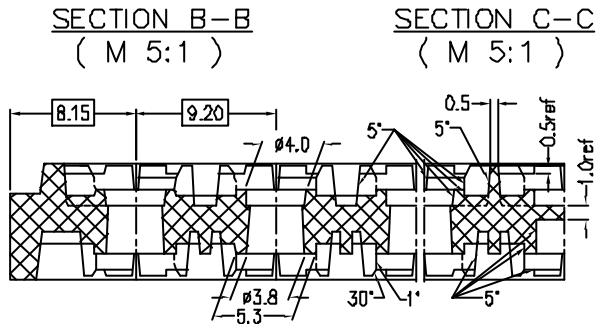
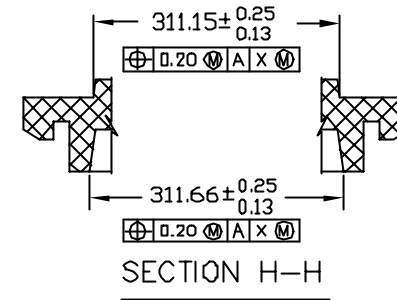
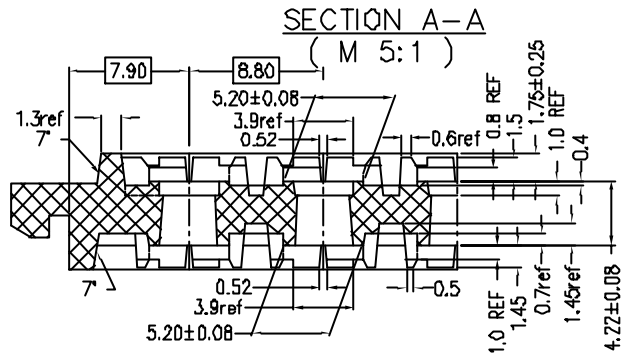
PEAK PEAK PLASTIC & METAL PRODUCTS INT'L LTD.

CUSTOMER : **PEAK**

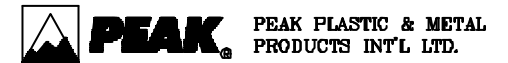
TITLE : TX QFN0505 1.0 1435 6 REV.C

DWG NO.: TX QFN0505 1.0 1435 6 REV.C

REV. 0



DETAIL C
NOTE: SCALLOP IS CENTERED ON SIDE OF TRAY



REV. NO.	ECN #	DESCRIPTION	DATE
0		RELEASED FOR PRODUCTION	08 MAY 02

THIS DOCUMENT CONTAINS INFORMATION PROPRIETARY TO PEAK PLASTIC & METAL PRODUCTS INTERNATIONAL LIMITED. REPRODUCTION, DISCLOSURE OR USE OF THIS DOCUMENT IS EXPRESSLY PROHIBITED EXCEPT IF OTHERWISE AGREED UPON IN WRITING.

DRAWN BY : FORD	PAGE 2 OF 2
CHECKED BY :	DATE : 08 MAY 02
APPROVED BY :	DATE : 08 MAY 02
APPROVED BY :	DATE : 09 MAY 02
DO NOT SCALE DRAWING	CCDE : CSA08269

CUSTOMER :	PEAK
TITLE :	TX QFN0505 1.0 1435 6 REV.C
DWG NO.:	TX QFN0505 1.0 1435 6 REV.C
REV. 0	