

**DOCUMENT TYPE:** POD

**DOCUMENT ID #:** 21-100484

**REVISION:** B-000

**DOCUMENT TITLE:** PACKAGE OUTLINE, 16L THIN QFN, 5.00x5.00

**EFFECTIVE DATE:** 11/04/2022

**EXPIRATION DATE:**

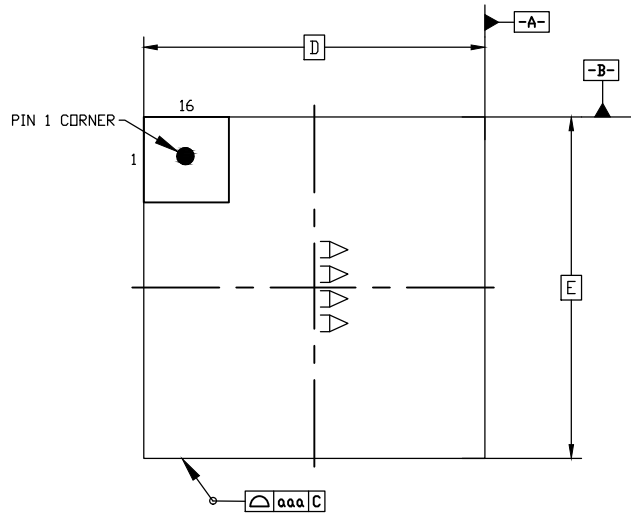
**CHANGE NUMBER:** 1175001

**ORIGINATOR:** Bernard Go

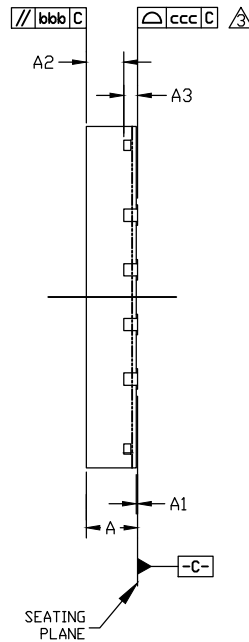
**REASON FOR CHANGE:**

Update Table symbol from J, K, to D2, E2 to match diagram

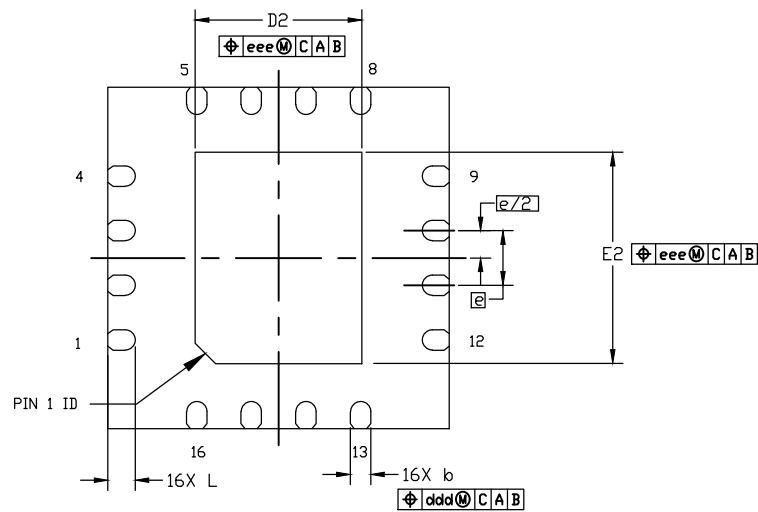
**TOP VIEW**



**SIDE VIEW**



**BOTTOM VIEW**



	SYMBOL	MIN	NOM	MAX
TOTAL THICKNESS	A	0.7	0.75	0.8
STAND OFF	A1	0	0.02	0.05
MOLD THICKNESS	A2	---	0.55	---
L/F THICKNESS	A3	0.203 REF		
LEAD WIDTH	b	0.25	0.3	0.35
BODY SIZE	X	D		
	Y	E		
LEAD PITCH	e	0.8 BSC		
EP SIZE	X	D2	2.339	2.439
	Y	E2	2.998	3.098
LEAD LENGTH	L	0.3	0.4	0.5
PACKAGE EDGE TOLERANCE	aaa	0.1		
MOLD FLATNESS	bbb	0.1		
COPLANARITY	ccc	0.08		
LEAD OFFSET	ddd	0.1		
EXPOSED PAD OFFSET	eee	0.1		

NOTES:

- ALL DIMENSIONS ARE IN MILLIMETERS.
- DIMENSIONING AND TOLERANCING CONFORM TO ASME Y14.5M,-1994.
- COPLANARITY APPLIES TO LEADS CORNER LEADS AND DIE ATTACH PAD. PACKAGE IS JEDEC MO-220 COMPLIANT. N IS THE TOTAL NUMBER OF TERMINALS.
- MARKING SHOWN IS FOR PKG. ORIENTATION PURPOSE ONLY.
- MATERIAL MUST COMPLY WITH BANNED AND RESTRICTED SUBSTANCES SPEC #10-0131.
- ALL DIMENSIONS APPLY TO PBFREE (+) PKG. CODES ONLY.
- TOTAL THICKNESS DOES NOT INCLUDE SAW BURR.
- PACKAGE CODE: T1655+5



TITLE:  
PACKAGE OUTLINE, 16L THIN QFN,  
5.00x5.00x0.75mm

APPROVAL  
JIE MAD

DOCUMENT CONTROL NO.  
21-100484

REV. B 1/1

-DRAWING NOT TO SCALE-

### REVISION HISTORY

REV	CHANGES MADE	DATE	INIT.
A	CN 1080623. INITIAL RELEASE. POD for T1655-5, new pkg code for customized LF, rectangular EP and Paddle	03/23/20	BG
B	CN 1175001. Update Table symbol from J, K, to D2, E2 to match diagram	11/04/22	BG

**TITLE:** PACKAGE OUTLINE, 16L THIN QFN, 5.00x5.00x0.75mm



**DOCUMENT I.D.**  
21-100484

**REVISION**  
B

**PAGE**  
2