

**DOCUMENT TYPE:** POD

**DOCUMENT ID #:** 21-100748

**REVISION:** B-000

**DOCUMENT TITLE:** PACKAGE OUTLINE, 16L TQFN 3x3x0.75mm, WE

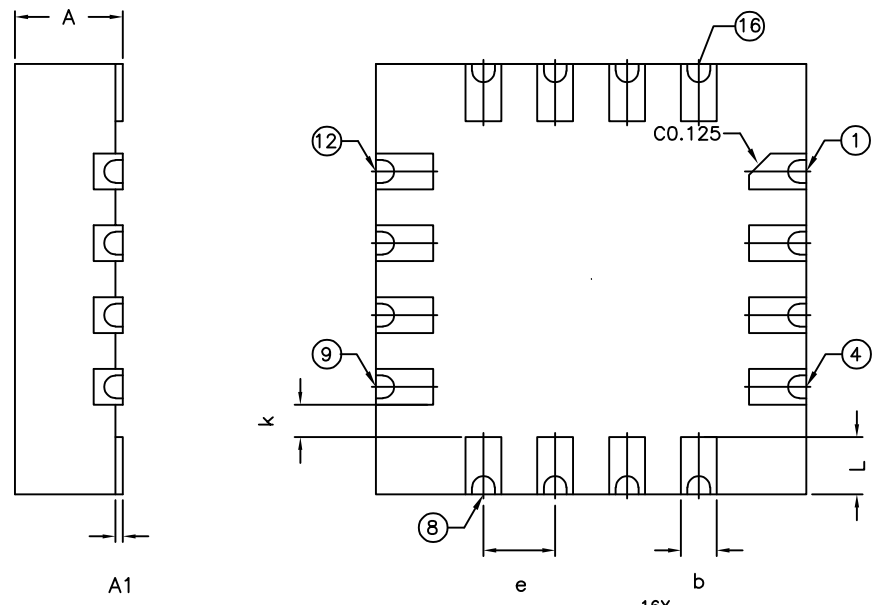
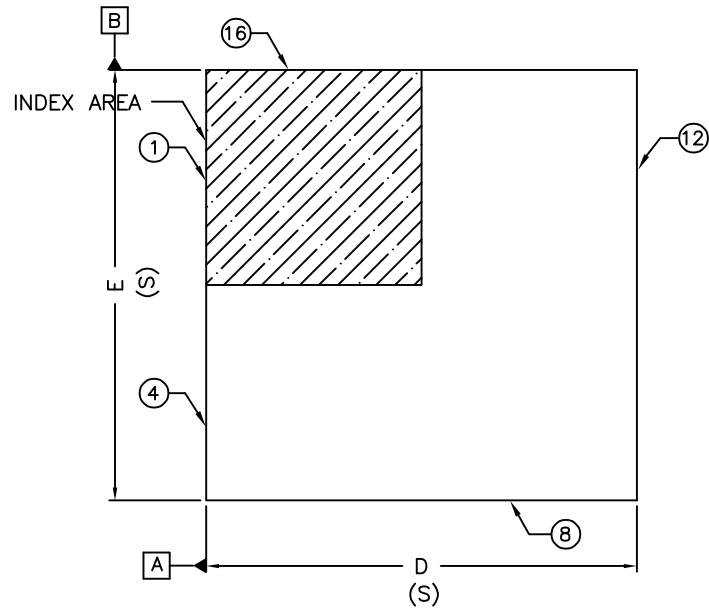
**EFFECTIVE DATE:** 04/04/2024

**EXPIRATION DATE:**

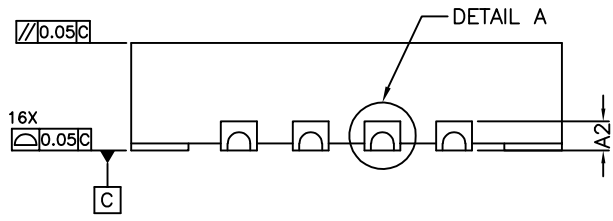
**CHANGE NUMBER:** 1206722

**ORIGINATOR:** Aurelio Giron Jr.

**REASON FOR CHANGE:**  
Additional features added due to design change



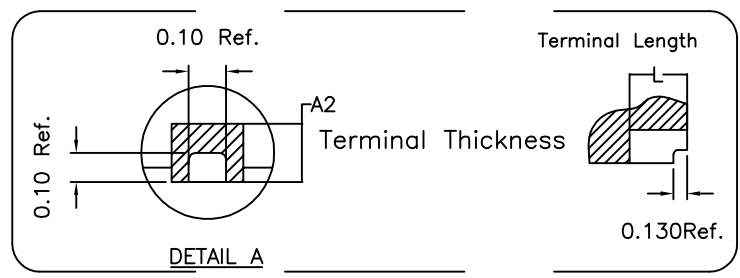
16X  
 $\Phi 0.10 @ CAB$



| COMMON DIMENSIONS |            |      |      |
|-------------------|------------|------|------|
| DIM               | MIN        | NOM  | MAX  |
| A                 | 0.70       | 0.75 | 0.80 |
| A1                | 0.0        | -    | 0.05 |
| A2                | 0.20 REF.  |      |      |
| b                 | 0.20       | 0.25 | 0.30 |
| D                 | 2.95       | 3.00 | 3.05 |
| E                 | 2.95       | 3.00 | 3.05 |
| e                 | 0.50 BSC   |      |      |
| k                 | 0.235 Ref. |      |      |
| L                 | 0.30       | 0.40 | 0.50 |
| N                 | 16         |      |      |

NOTE :

1. ALL DIMENSIONS ARE IN mm. ANGLES IN DEGREES.
2. COPLANARITY APPLIES TO THE EXPOSED PAD AS WELL AS THE TERMINALS. COPLANARITY SHALL NOT EXCEED 0.05 mm.
3. WARPAGE SHALL NOT EXCEED 0.05 mm.
4. PACKAGE LENGTH / PACKAGE WIDTH ARE CONSIDERED AS SPECIAL CHARACTERISTIC. (S)
5. REFER JEDEC MO-220.
6. PACKAGE CODE: T1633CNY+4C



CONFIDENTIAL & PROPRIETARY

---

TITLE:  
 PACKAGE OUTLINE, 16L TQFN  
 3x3x0.75mm, WETTABLE FLANK

|                       |                                  |           |       |
|-----------------------|----------------------------------|-----------|-------|
| APPROVAL<br>Chuck Xia | PACKAGE OUTLINE NO.<br>21-100748 | REV.<br>B | 1 / 1 |
|-----------------------|----------------------------------|-----------|-------|

-DRAWING NOT TO SCALE-

