

**DOCUMENT TYPE:** POD

**DOCUMENT ID #:** 21-100388

**REVISION:** B-000

**DOCUMENT TITLE:** PACKAGE OUTLINE, 20L, SW QFN 4X4X0.75mm

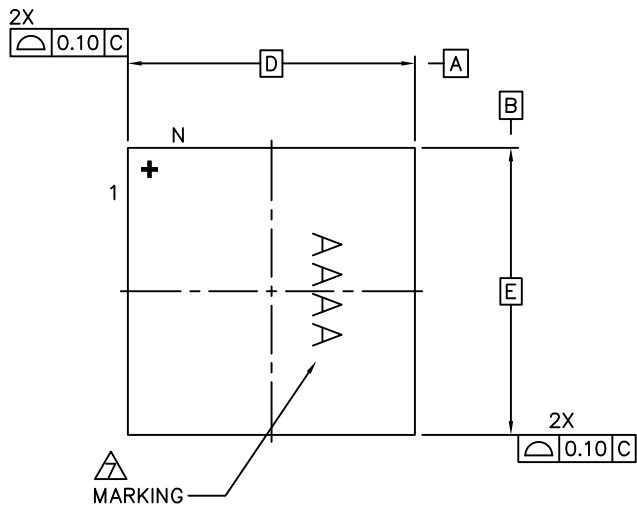
**EFFECTIVE DATE:** 03/08/2024

**EXPIRATION DATE:**

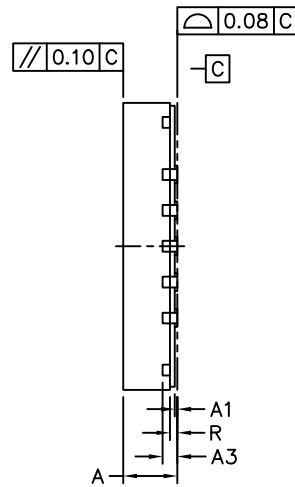
**CHANGE NUMBER:** 1205496

**ORIGINATOR:** Aurelio Giron Jr.

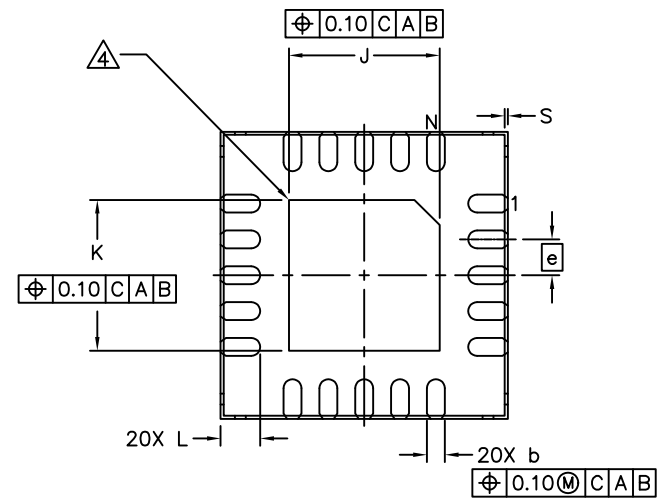
**REASON FOR CHANGE:**  
Move marking AAAA rotate 90 degree clock wise



TOP VIEW



SIDE VIEW



BOTTOM VIEW

NOTES:

1. ALL DIMENSION AND TOLERANCE CONFORM TO ASME Y14.5M-1994.
2. ALL DIMENSION ARE IN MILLIMETERS UNLESS OTHERWISE SPECIFIED.
3. N IS THE TOTAL NUMBER OF TERMINALS.
4. BILATERAL COPLANARITY ZONE APPLIES TO THE EXPOSED PAD AS WELL AS THE TERMINALS.
5. ALL DIMENSION APPLY TO BOTH LEADED (-) AND PbFREE (+) PKG. CODES.
6. DRAWING CONFORMS TO JEDEC MO-220.
7. MARKING SHOWN IS FOR PACKAGE ORIENTATION REFERENCE ONLY.
8. CONTROLLING DIMENSION: mm.
9. PKG. CODE: T2044Y+6C.

-DRAWING NOT TO SCALE-

COMMON DIMENSIONS			
DIM	MIN.	NOM.	MAX.
A	0.70	0.75	0.80
A1	0	0.035	0.05
A3	0.203		REF
b	0.20	0.25	0.30
e	0.50		BSC
D	4.00		BSC
E	4.00		BSC
J	2.00	2.1	2.20
K	2.00	2.1	2.20
L	0.50	0.55	0.60
R		0.1	REF
S	0.01	0.0425	0.075
N	20		



TITLE:  
PACKAGE OUTLINE, 20L,  
SW QFN 4X4X0.75mm

APPROVAL CHUCK XIA	DOCUMENT CONTROL NO. 21-100388	REV. B	1/1
-----------------------	-----------------------------------	-----------	-----

### REVISION HISTORY

REV	CHANGES MADE	DATE	INIT.
A	CN 1053057. INITIAL RELEASE	03/28/19	BG
B	CN 1205496. Move marking AAAA rotate 90 degree clock wise	03/08/24	GA

**TITLE:** PACKAGE OUTLINE, 20L, SW QFN 4X4X0.75mm



**DOCUMENT I.D.**  
21-100388

**REVISION**  
B

**PAGE**  
2