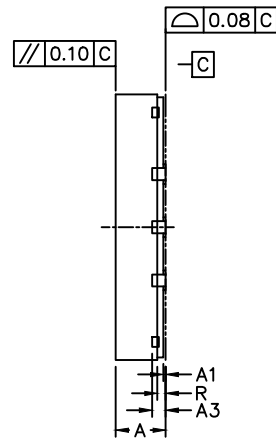
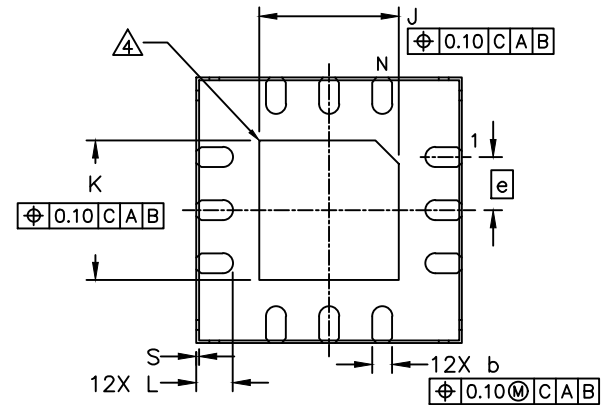


TOP VIEW



SIDE VIEW




BOTTOM VIEW

NOTES:

1. ALL DIMENSION AND TOLERANCE CONFORM TO ASME Y14.5M-1994.
2. ALL DIMENSION ARE IN MILLIMETERS UNLESS OTHERWISE SPECIFIED.
3. N IS THE TOTAL NUMBER OF TERMINALS.
4. BILATERAL COPLANARITY ZONE APPLIES TO THE EXPOSED PAD AS WELL AS THE TERMINALS.
5. ALL DIMENSION APPLY TO BOTH LEADED (-) AND PbFREE (+) PKG. CODES.
6. MARKING SHOWN IS FOR PACKAGE ORIENTATION REFERENCE ONLY.
7. CONTROLLING DIMENSION: mm.
8. PKG. CODE: T1244Y-4C

-DRAWING NOT TO SCALE-

COMMON DIMENSIONS			
DIM	MIN.	NOM.	MAX.
A	0.70	0.75	0.80
A1	0	0.035	0.05
A3	0.203		REF
b	0.25	0.3	0.35
e	0.8		BSC
D	4		BSC
E	4		BSC
J	2.00	2.1	2.20
K	2.00	2.1	2.20
L	0.50	0.55	0.60
S	0.01	0.0425	0.075
N	12		



maxim
integrated™

CONFIDENTIAL & PROPRIETARY

TITLE:
PACKAGE OUTLINE, 12L, WETQFN 4X4X0.75mm

APPROVAL ----	PACKAGE OUTLINE NO. 21-100312	REV. A	1/1
------------------	----------------------------------	-----------	-----