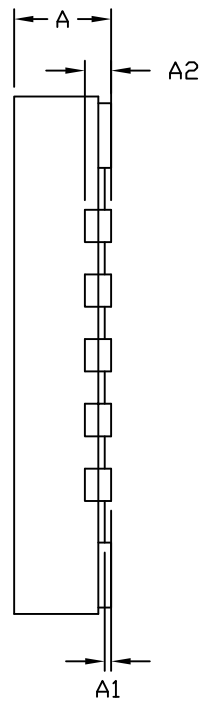
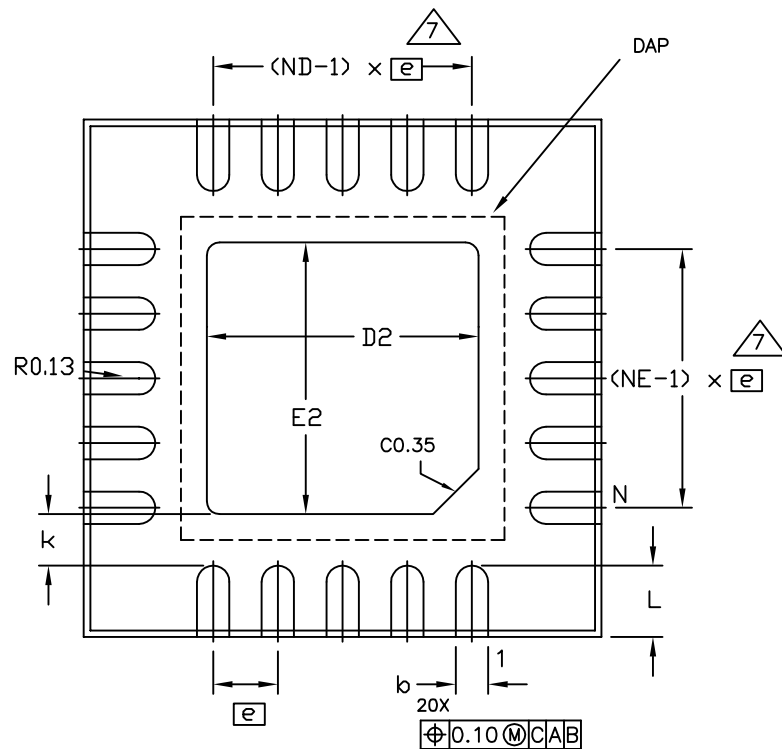


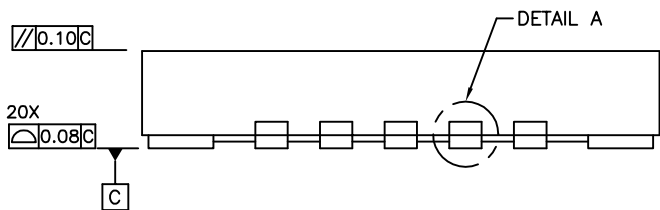
TOP VIEW



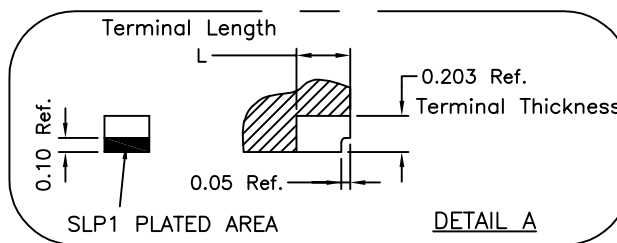
SIDE VIEW



BOTTOM VIEW



SIDE VIEW



TITLE:
 PACKAGE OUTLINE, 20L
 4x4x0.75mm TQFN PKG. w/SLP

DOCUMENT CONTROL NO.
 21-100068

REV. B 1/2

-DRAWING NOT TO SCALE-

COMMON DIMENSIONS			
REF.	MIN.	NOM.	MAX.
A	0.70	0.75	0.80
A1	0.0	0.02	0.05
A2	0.20 REF		
b	0.20	0.25	0.30
D	3.90	4.00	4.10
E	3.90	4.00	4.10
e	0.50 BSC.		
k	0.25	-	-
N	20		
ND	5		
NE	5		

DIMENSION VARIATIONS									
PKG. CODE	D2			E2			L		
	MIN.	NOM.	MAX.	MIN.	NOM.	MAX.	MIN.	NOM.	MAX.
T2044Y-3C	2.00	2.10	2.20	2.00	2.10	2.20	0.50	0.55	0.60
T2044Y-4C	2.80	2.90	3.00	2.80	2.90	3.00	0.25	0.30	0.35

NOTES:

1. ALL DIMENSIONS ARE IN mm. ANGLES IN DEGREES.
2. ALL DIMENSIONS APPLY TO PbFREE (+) PACKAGE CODE ONLY.
3. WARPAGE SHALL NOT EXCEED 0.10mm.
4. PACKAGE LENGTH / PACKAGE WIDTH ARE CONSIDERED AS SPECIAL CHARACTERISTIC. (S) REFER JEDEC MO-220.
5. L/F STOCK#FR0056 (Ag on lead only), UTL PKG CODE TQ-400E4001020A OR TQ-400S4001020A OR TQ-400M4001020A OR TQ-400D4001020A
6. N IS THE TOTAL NUMBER OF TERMINALS.
7. ND AND NE REFER TO THE NUMBER OF TERMINALS ON EACH D AND E SIDE RESPECTIVELY.
8. MARKING IS FOR PACKAGE ORIENTATION REFERENCE ONLY.
9. NUMBER OF LEADS SHOWN ARE FOR REFERENCE ONLY.



TITLE:
PACKAGE OUTLINE, 20L
4x4x0.75mm TQFN PKG. w/SLP

DOCUMENT CONTROL NO.
21-100068

REV. B 2/2