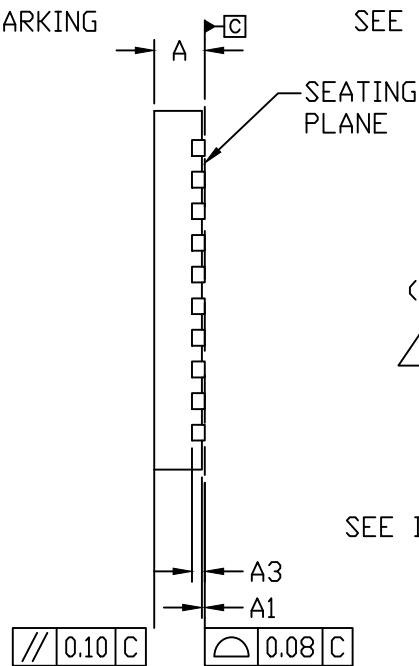
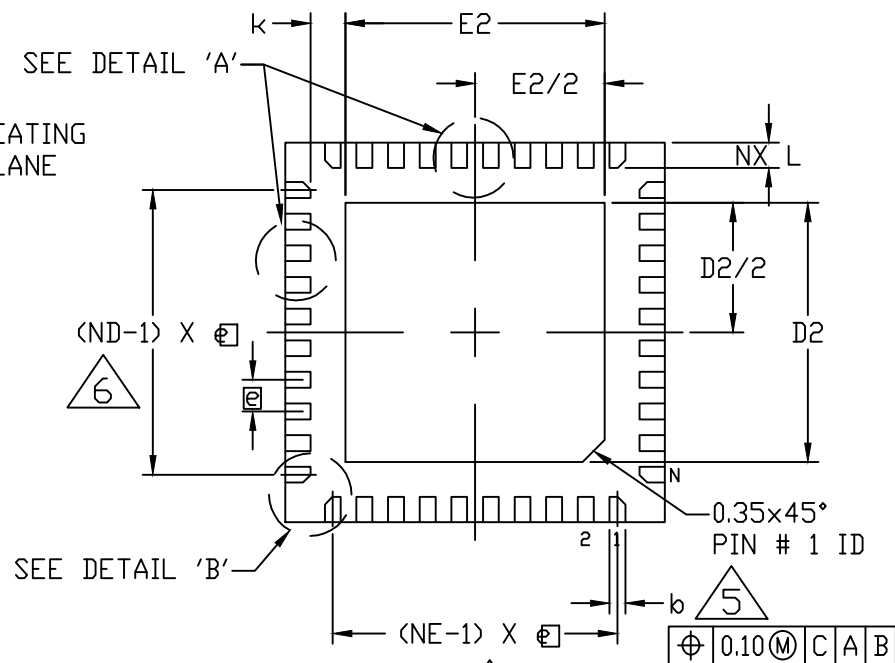


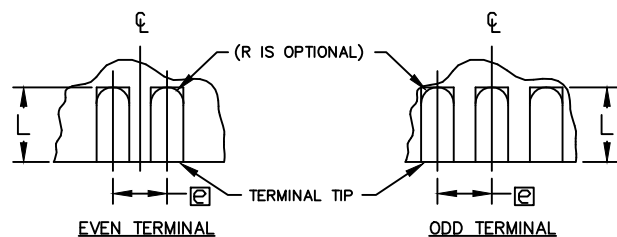
TOP VIEW



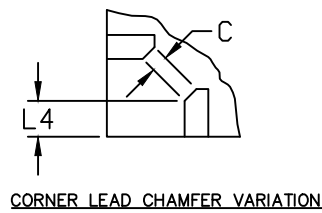
SIDE VIEW



BOTTOM VIEW



DETAIL 'A'



TITLE:  
PACKAGE OUTLINE,  
36, 40, 48L THIN QFN, 6x6x0.75mm

APPROVAL  
JIE MAD

DOCUMENT CONTROL NO.  
21-0141

REV. 1/3  
V

-DRAWING NOT TO SCALE-

COMMON DIMENSIONS									
PKG.	36L 6x6			40L 6x6			48L 6x6		
SYMBOL	MIN.	NOM.	MAX.	MIN.	NOM.	MAX.	MIN.	NOM.	MAX.
A	0.70	0.75	0.80	0.70	0.75	0.80	0.70	0.75	0.80
A1	0	0.02	0.05	0	0.02	0.05	0	-	0.05
A3	0.20 REF.			0.20 REF.			0.20 REF.		
b	0.20	0.25	0.30	0.20	0.25	0.30	0.15	0.20	0.25
D	5.90	6.00	6.10	5.90	6.00	6.10	5.90	6.00	6.10
E	5.90	6.00	6.10	5.90	6.00	6.10	5.90	6.00	6.10
e	0.50 BSC.			0.50 BSC.			0.40 BSC.		
k	0.25	-	-	0.25	-	-	0.25	-	-
L	0.35	0.50	0.65	0.30	0.40	0.50	0.30	0.40	0.50
N	36			40			48		
ND	9			10			12		
NE	9			10			12		
JEDEC	WJJD-1			WJJD-2			-		

CORNER LEAD CHAMFER VARIATION		
PKG. CODES	C	L4
T4066-2	0.12 X 45° REF	0.31 REF
T4066-2C	0.12 X 45° REF	0.31 REF
T4066-3	0.12 X 45° REF	0.31 REF
T4066-5	0.12 X 45° REF	0.31 REF
T4066-5C	0.12 X 45° REF	0.31 REF
T4066M-5	0.12 X 45° REF	0.31 REF
T4066MK-5	0.12 X 45° REF	0.31 REF
T4066MN-5	0.12 X 45° REF	0.31 REF

EXPOSED PAD VARIATIONS						
PKG. CODES	D2			E2		
	MIN.	NOM.	MAX.	MIN.	NOM.	MAX.
T3666-2	3.60	3.70	3.80	3.60	3.70	3.80
T3666-2C	3.60	3.70	3.80	3.60	3.70	3.80
T3666-3	3.60	3.70	3.80	3.60	3.70	3.80
T3666-3C	3.60	3.70	3.80	3.60	3.70	3.80
T3666N-1	3.60	3.70	3.80	3.60	3.70	3.80
T3666MN-1	3.60	3.70	3.80	3.60	3.70	3.80
T4066-2	4.00	4.10	4.20	4.00	4.10	4.20
T4066-2C	4.00	4.10	4.20	4.00	4.10	4.20
T4066-3	4.00	4.10	4.20	4.00	4.10	4.20
T4066-5	4.00	4.10	4.20	4.00	4.10	4.20
T4066-5C	4.00	4.10	4.20	4.00	4.10	4.20
T4066M-5	4.00	4.10	4.20	4.00	4.10	4.20
T4066MK-5	4.00	4.10	4.20	4.00	4.10	4.20
T4066MN-5	4.00	4.10	4.20	4.00	4.10	4.20
T4866-1	4.40	4.50	4.60	4.40	4.50	4.60
T4866-1C	4.40	4.50	4.60	4.40	4.50	4.60
T4866N-1	4.40	4.50	4.60	4.40	4.50	4.60
T4866-2	4.40	4.50	4.60	4.40	4.50	4.60
T4866-2C	4.40	4.50	4.60	4.40	4.50	4.60
T4866-3	4.40	4.50	4.60	4.40	4.50	4.60
T4866-3C	4.40	4.50	4.60	4.40	4.50	4.60
T4866MK-2	4.40	4.50	4.60	4.40	4.50	4.60
T4866-4	4.40	4.50	4.60	4.40	4.50	4.60
T4866-5	4.10	4.20	4.30	4.10	4.20	4.30



TITLE:  
PACKAGE OUTLINE,  
36, 40, 48L THIN QFN, 6x6x0.75mm

APPROVAL  
JIE MAD

DOCUMENT CONTROL NO.  
21-0141

REV. 2/3  
V

-DRAWING NOT TO SCALE-

NOTES:

1. ALL DIMENSIONS ARE IN MILLIMETERS, ANGLES IN DEGREES UNLESS OTHERWISE SPECIFIED
2. DIMENSIONING & TOLERANCING CONFORM TO ASME Y14.5M-1994.
3. MATERIAL MUST BE COMPLIANT WITH MAXIM SPECIFICATION 10-0131 FOR SUBSTANCE CONTENT, MUST BE EU ROHS COMPLIANT WITHOUT EXEMPTION AND PB-FREE.
4. THE TERMINAL #1 IDENTIFIER AND TERMINAL NUMBERING CONVENTION SHALL CONFORM TO JESD 95-1 SPP-012. DETAILS OF TERMINAL #1 IDENTIFIER ARE OPTIONAL, BUT MUST BE LOCATED WITHIN THE ZONE INDICATED. THE TERMINAL #1 IDENTIFIER MAY BE EITHER A MOLD OR MARKED FEATURE.
5. DIMENSION b APPLIES TO METALLIZED TERMINAL AND IS MEASURED BETWEEN 0.25mm AND 0.30mm FROM TERMINAL TIP.
6. ND AND NE REFER TO THE NUMBER OF TERMINALS ON EACH D AND E SIDE, RESPECTIVELY.
7. DRAWING CONFORMS TO JEDEC MQ220, EXCEPT FOR 0.4mm LEAD PITCH: PACKAGE T4866.
8. APPLICABLE ONLY FOR PACKAGES WITH TIGHT CORNER LEADS METAL TO METAL CLEARANCE
9. N IS THE TOTAL NUMBER OF TERMINALS.
10. WARPAGE SHALL NOT EXCEED 0.10mm.
11. MARKING IS FOR PACKAGE ORIENTATION PURPOSE ONLY.
12. NUMBER OF LEADS SHOWN FOR REFERENCE ONLY.
13. ALL DIMENSIONS APPLY TO BOTH LEADED (-) AND PbFREE (+) PKG. CODES.



TITLE:  
PACKAGE OUTLINE,  
36, 40, 48L THIN QFN, 6x6x0.75mm

APPROVAL JIE MAD	DOCUMENT CONTROL NO. 21-0141	REV. V	3/3
---------------------	---------------------------------	-----------	-----

-DRAWING NOT TO SCALE-