



DOCUMENT TYPE: POD

DOCUMENT ID #: 21-0135

REVISION: S-000

DOCUMENT TITLE: PACKAGE OUTLINE, 56L THIN QFN, 8X8X0.75M

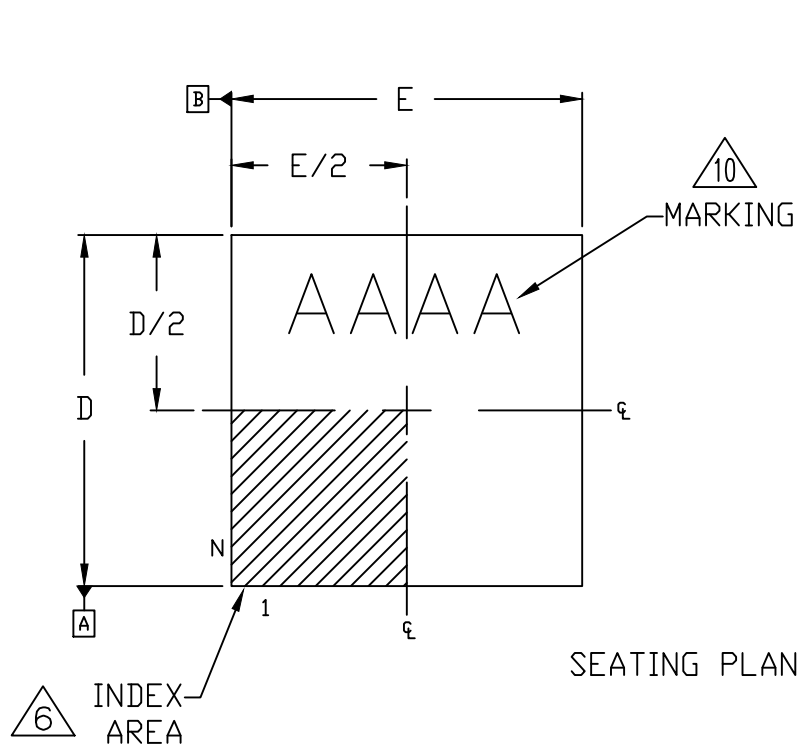
EFFECTIVE DATE: 07/08/2022

EXPIRATION DATE:

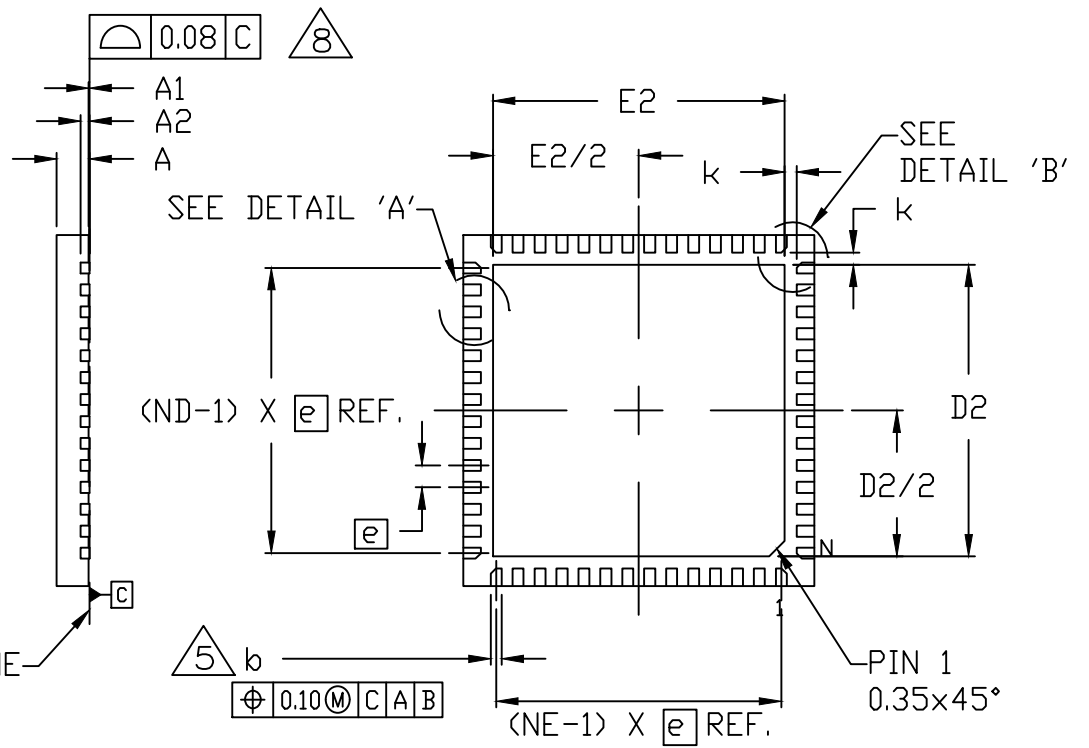
CHANGE NUMBER: 1166953

ORIGINATOR: Bernard Go

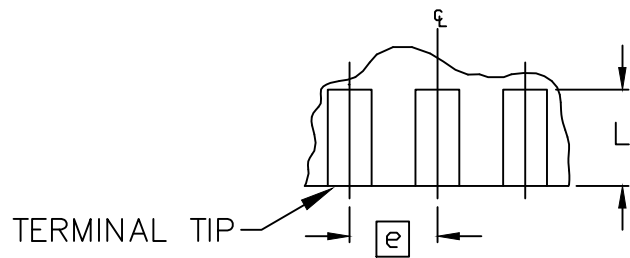
REASON FOR CHANGE:
Add T5688+5C



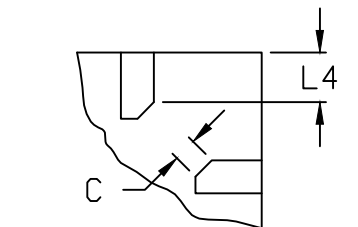
TOP VIEW



BOTTOM VIEW



EVEN TERMINAL
DETAIL 'A'



DETAIL 'B'



TITLE:
PACKAGE OUTLINE, 56L THIN QFN,
8x8x0.75mm

APPROVAL
CHUCK XIA

DOCUMENT CONTROL NO.
21-0135

REV. S 1/2

NOTES:

1. ALL DIMENSIONS ARE IN MILLIMETERS UNLESS OTHERWISE SPECIFIED.
2. DIMENSIONING & TOLERANCING CONFORM TO ASME Y14.5M-1994.
3. N IS THE TOTAL NUMBER OF TERMINALS.
4. ND AND NE REFER TO THE NUMBER OF TERMINALS ON EACH D AND E SIDE, RESPECTIVELY.
5. DIMENSION b APPLIES TO METALLIZED TERMINAL AND IS MEASURED BETWEEN 0.20mm AND 0.25mm FROM TERMINAL TIP.
6. THE PIN #1 IDENTIFIER MUST BE LOCATED ON THE TOP SURFACE OF THE PACKAGE WITHIN HATCHED AREA AS SHOWN. EITHER AN INDENTATION MARK OR INK/LASER MARK IS ACCEPTABLE.
7. PACKAGE WARPAGE MAX 0.10mm.
8. APPLIES TO EXPOSED PAD AND TERMINALS. EXCLUDES INTERNAL DIMENSION OF EXPOSED PAD.
9. DRAWING CONFORMS TO JEDEC MO-220.
10. MARKING IS FOR PACKAGE ORIENTATION REFERENCE ONLY.
11. NUMBER OF LEADS SHOWN ARE FOR REFERENCE ONLY.
12. APPLICABLE ONLY FOR PACKAGES WITH TIGHT CORNER LEADS METAL TO METAL CLEARANCE AS DEFINED IN JEDEC.
13. MATERIAL MUST BE COMPLIANT WITH MAXIM SPECIFICATION 10-0131 FOR SUBSTANCE CONTENT, MUST BE EU ROHS COMPLIANT WITHOUT EXEMPTION AND PB-FREE.
14. ALL DIMENSIONS APPLY TO BOTH LEADED (-) AND PbFREE (+) PKG. CODES.

SYMBOL	56L 8x8			NOTE
	MIN.	NOM.	MAX.	
A	0.70	0.75	0.80	
A1	0.00	0.02	0.05	
A2	0.20 REF			
b	0.20	0.25	0.30	5
C	0.12 X 45° REF.			
D	7.90	8.00	8.10	
E	7.90	8.00	8.10	
Ⓜ	0.50 BSC			
N	56			3
ND	14			4
NE	14			4
L	0.30	0.40	0.50	
L4	0.31 REF.			
k	0.25	--	--	

VARIATION for T5688+6, T5688+6C			
A1	0.00	0.035	0.05

PKG. CODE	EXPOSED PAD VARIATION						JEDEC
	D2			E2			
	MIN.	NOM.	MAX.	MIN.	NOM.	MAX.	
T5688+2	6.50	6.65	6.70	6.50	6.65	6.70	WLLD-5
T5688+3	6.50	6.65	6.70	6.50	6.65	6.70	WLLD-5
T5688+2C	6.50	6.65	6.70	6.50	6.65	6.70	WLLD-5
T5688+4C	6.50	6.65	6.70	6.50	6.65	6.70	WLLD-5
T5688M+3	6.50	6.65	6.70	6.50	6.65	6.70	WLLD-5
T5688MN+3	6.50	6.65	6.70	6.50	6.65	6.70	WLLD-5
T5688MK+2	6.50	6.65	6.70	6.50	6.65	6.70	WLLD-5
T5688+5	6.50	6.65	6.70	6.50	6.65	6.70	WLLD-5
T5688+5C	6.50	6.65	6.70	6.50	6.65	6.70	WLLD-5
T5688+6	4.60	4.70	4.80	4.60	4.70	4.80	WLLD-5
T5688+6C	4.60	4.70	4.80	4.60	4.70	4.80	WLLD-5



TITLE:
PACKAGE OUTLINE, 56L THIN QFN,
8x8x0.75mm

APPROVAL CHUCK XIA	DOCUMENT CONTROL NO. 21-0135	REV. S	2/2
-----------------------	---------------------------------	-----------	-----

-DRAWING NOT TO SCALE-

REVISION HISTORY

REV	CHANGES MADE	DATE	INIT.
A	ECN #HQ-02-0012. NEW ISSUE. THIS DRAWING REPLACES 21-0129	01/07/02	GP
B	ECN #HQ-02-4718. VARIATIONS TABLE ADDED AND TITLE CHANGED	07/12/02	GP
C	ECN #HQ-03-3489. NOTE CHANGES. DALLAS LOGO ADDED. TITLE CHANGE	04/15/03	ND
D	ECN #HQ-04-3851. NEW PKG. CODES ADDED TO EXPOSED PAD VARIATIONS TABLE. DOWN BONDS COLUMN ADDED TO THS TABLE	03/26/01	JD
E	ECN #HQ-05-8562. UPDATAE PKG. CODES BASED ON CURRENT STATUS	09/06/05	RdeL
F	ECN #HQ-07-0135. T5688MN-3 PKG. DATA ADDED	07/13/07	GP
G	ECN #HQ-11-0996. NEW BORDER/TEMPLATE	05/31/11	MM
H	ECN #HQ-11-1311. T5688MK+2 PKG. CODE ADDED	07/18/11	GP
I	ECN #HQ-13-0036. ADD REFERENCE TO PACKAGE VARIATION ON CORNER PIN CHAMFER DIMENSIONS. -ADD TABLE LISTING PACKAGE CODE WITH APPLICABLE CORNER PIN CHAMFER VARIATION -ADD DETAIL 'B' SHOWING DIAGRAM OF CORNER CHAMFER LEAD OPTION. -PLACED UTL IN THE REFERENCE ONLY FIELD	01/15/13	MM
J	ECN # HQ-13-2243. Add new package code for copper wire bonding	09/30/13	AG
K	ECN HQ-14-0089. CUSTOM HYBRID PKG. FOR AI47 (MULTI-DIE DWG). DWG. IDENTICAL TO T5688-3	01/14/14	AG
L	ECN HQ-14-2766. T5688+5 PKG. CODE ADDED	10/20/14	GP
M	CN #1006650. PKG CODE T5688+6 ADDED	05/12/16	NB
N	CN 1007468. D2/E2 DIMS CHANGED FOR T5688+6.	10/18/16	GP/WZ
O	CN 1054645. ADDED POSITIONAL TOLERANCE FOR DIMENSION "b"	03/27/19	BG
P	CN 1055052 Removed T5688-3C (obsolete package code) and added T5688-4C. Update pkgcodes from "+" to "-".	04/05/19	BG
Q	CN 1068916 Update note 7 to indicate correct Package warpage at 0.10mm	09/30/19	BG
R	CN 1103256. Add Pkgcode T5688+6C	10/20/20	BG
S	CN 1166953. Added T5688+5C.	07/08/22	BG

TITLE: PACKAGE OUTLINE, 56L THIN QFN, 8X8X0.75MM

DOCUMENT I.D. 21-0135	REVISION S	PAGE 3
---------------------------------	--------------------------------------	------------------

