

DOCUMENT TYPE: POD

DOCUMENT ID #: 21-100600

REVISION: C-000

DOCUMENT TITLE: PACKAGE OUTLINE 9 BUMPS THIN WLP PKG. 0.

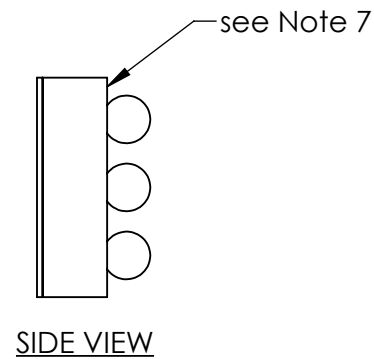
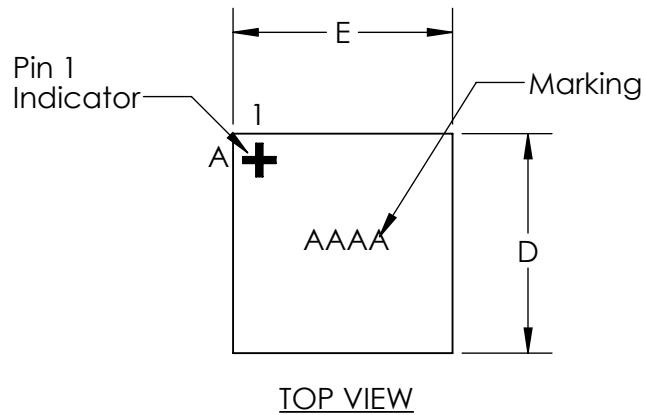
EFFECTIVE DATE: 09/26/2023

EXPIRATION DATE:

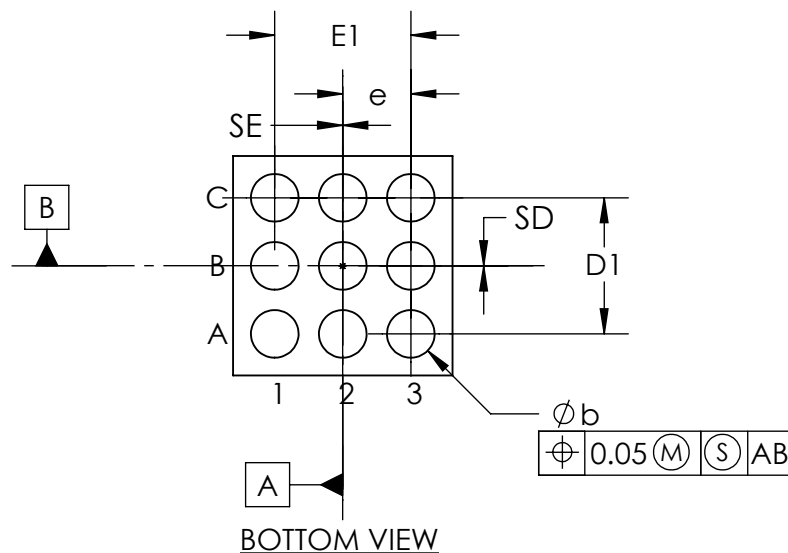
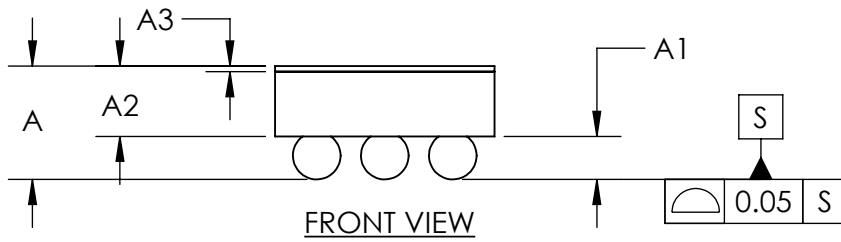
CHANGE NUMBER: 1196631

ORIGINATOR: Merla Avendano

REASON FOR CHANGE:
DEFINE "A" TOLERANCE



COMMON DIMENSIONS	
A	0.47 ±0.03
A1	0.16 ±0.03
A2	0.31 REF
A3	0.025 BASIC
b	∅0.21 ±0.03
D	0.968 ±0.025
E	0.968 ±0.025
D1	0.60 BASIC
E1	0.60 BASIC
e	0.30 BASIC
SD	0.00 BASIC
SE	0.00 BASIC
DEPOPULATED BUMPS: NONE	



NOTES:

1. Terminal pitch is defined by terminal center to center value.
2. Outer dimension is defined by center lines between scribe lines.
3. All dimensions in millimeter.
4. Marking shown is for package orientation reference only.
5. Tolerance is ± 0.02 unless specified otherwise.
6. All dimensions apply to PbFree (+) package codes only.
7. Front - side finish can be either Black or Clear.

- DRAWING NOT TO SCALE -

TITLE PACKAGE OUTLINE 9 BUMPS THIN WLP PKG. 0.3 mm PITCH, N90A0+1			
APPROVAL	DOCUMENT CONTROL NO.	REV.	1/1
	21-100600	C	

