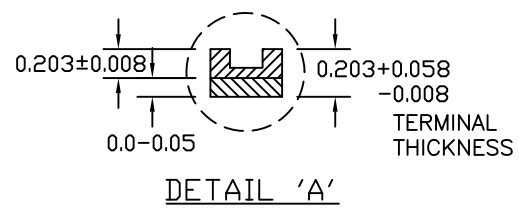
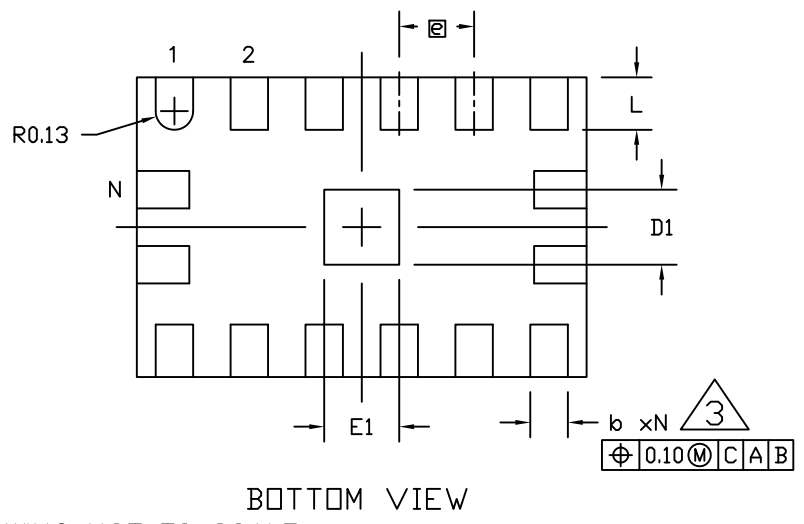
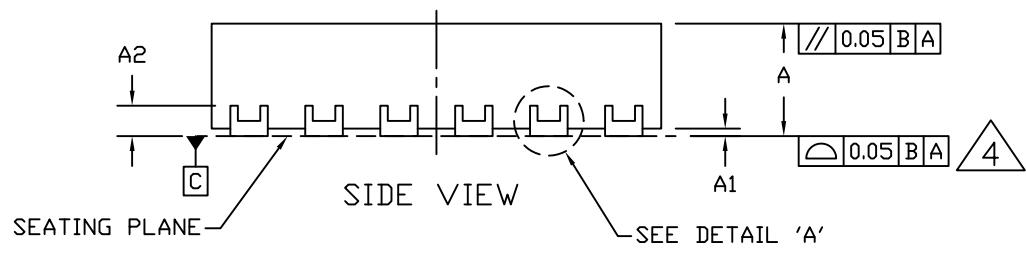


NOTES:

1. ALL DIMENSIONS ARE IN MILLIMETERS, ANGLES IN DEGREES UNLESS OTHERWISE SPECIFIED
2. DIMENSIONING & TOLERANCING CONFORM TO ASME Y14.5M-1994.
3. DIMENSION b APPLIES TO METALLIZED TERMINAL AND IS MEASURED BETWEEN 0.25mm AND 0.30mm FROM TERMINAL TIP.
4. COPLANARITY APPLIES TO THE EXPOSED HEAT SINK SLUG AS WELL AS THE TERMINALS AND SHALL NOT EXCEED 0.05mm.
5. DRAWING CONFORMS TO JEDEC MO-220,
6. N IS THE TOTAL NUMBER OF TERMINALS.
7. WARPAGE SHALL NOT EXCEED 0.05mm.
8. MARKING IS FOR PACKAGE ORIENTATION PURPOSE ONLY.
9. MATERIAL MUST BE COMPLIANT WITH MAXIM SPECIFICATION 10-0131 FOR SUBSTANCE CONTENT, MUST BE Eu ROHS COMPLIANT WITHOUT EXEMPTION AND PB-FREE.
10. ALL DIMENSIONS APPLY TO PbFREE (+) PKG. CODES ONLY.
11. PKG CODE: T1623CN+1



Symbol	MIN	NOM	MAX
A	0.70	0.75	0.80
A1	0.00	-	0.05
A2	0.20 REF.		
b	0.20	0.25	0.30
D	2.00 BSC		
E	3.00 BSC		
D1	0.40	0.50	0.60
E1	0.40	0.50	0.60
e	0.50 BSC		
L	0.30	0.40	0.50
N	16		

-DRAWING NOT TO SCALE-


**maxim integrated**

TITLE:  
PACKAGE OUTLINE, 16L TQFN COL,  
2x3x0.75mm

APPROVAL	DOCUMENT CONTROL NO. 21-100030	REV. A	1/1
----------	-----------------------------------	--------	-----