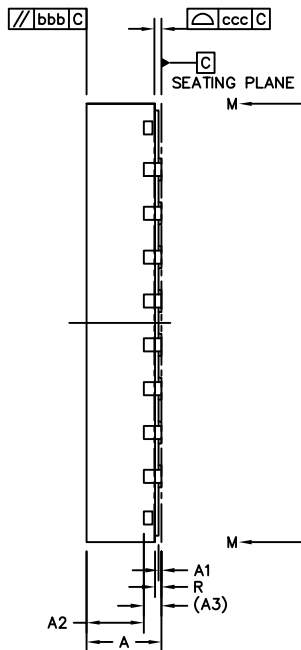
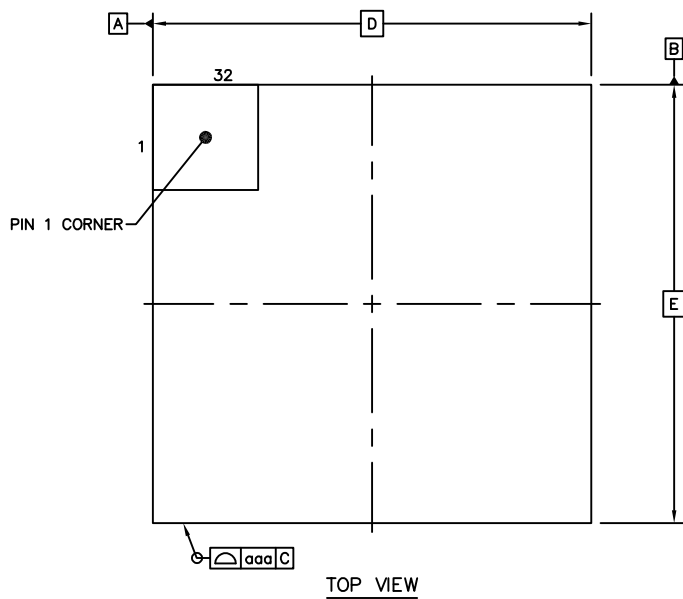


**DOCUMENT TYPE:** POD  
**DOCUMENT ID #:** 21-100589  
**REVISION:** A-000  
**DOCUMENT TITLE:** PACKAGE OUTLINE, 32L, SAWN QFN-CU 5X5X0.  
**EFFECTIVE DATE:** 05/21/2021  
**EXPIRATION DATE:**  
**CHANGE NUMBER:** 1121696  
**ORIGINATOR:** Aurelio Giron Jr.

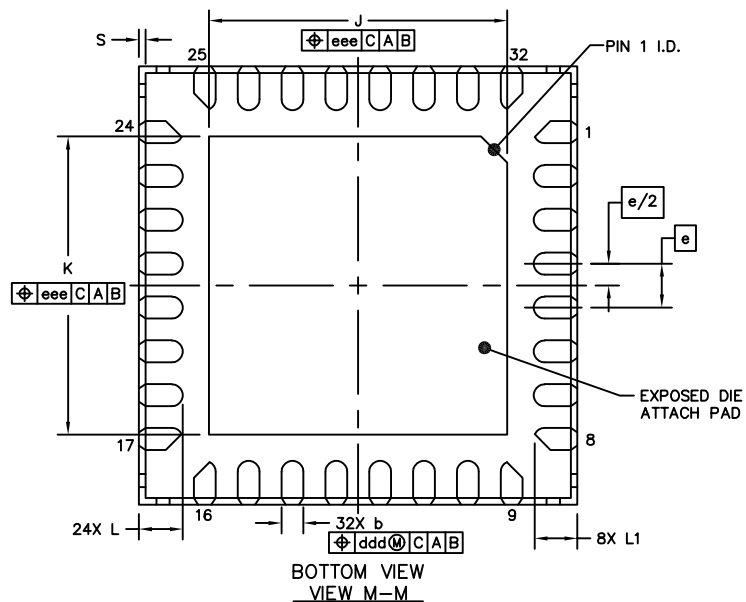
**REASON FOR CHANGE:**  
Trinamic pkg code K3255Y+3C



	SYMBOL	MIN	NOM	MAX	
TOTAL THICKNESS	A	0.8	0.85	0.9	
STAND OFF	A1	0	0.035	0.05	
MOLD THICKNESS	A2	---	0.65	---	
L/F THICKNESS	A3	0.203 REF			
LEAD WIDTH	b	0.2	0.25	0.3	
BODY SIZE	X	D 5 BSC			
	Y	E 5 BSC			
LEAD PITCH	e	0.5 BSC			
EP SIZE	X	J	3.3	3.4	3.5
	Y	K	3.3	3.4	3.5
LEAD LENGTH	L	0.45	0.5	0.55	
	L1	0.387	0.487	0.537	
PACKAGE EDGE TOLERANCE	aaa	0.1			
MOLD FLATNESS	bbb	0.1			
COPLANARITY	ccc	0.08			
LEAD OFFSET	ddd	0.1			
EXPOSED PAD OFFSET	eee	0.1			
HALF-CUT DEPTH	R	0.075	---	---	
HALF-CUT WIDTH	S	---	---	0.075	

NOTES

1. ALL DIMENSIONS ARE IN MILLIMETERS. ANGLES ARE IN DEGREES.
2. COPLANARITY APPLIES TO LEADS, CORNER LEADS AND DIE ATTACH PAD.
3. TOTAL THICKNESS NOT INCLUDE SAW BURR.
4. STEP CUT TYPE.
5. MATERIAL MUST BE COMPLIANT WITH MAXIM SPECIFICATION 10-0131 FOR SUBSTANCE CONTENT, MUST BE Eu ROHS COMPLIANT WITHOUT EXEMPTION AND PB-FREE.
6. ALL DIMENSIONS APPLY TO PbFREE (+) PARTS.
7. PACKAGE CODES:K325Y+3C



-DRAWING NOT TO SCALE-



TITLE:  
PACKAGE OUTLINE, 32L, SAWN QFN-CU  
5X5X0.9mm

APPROVAL

DOCUMENT CONTROL NO.  
21-100589

REV.  
A

1/1

### REVISION HISTORY

REV	CHANGES MADE	DATE	INIT.
A	CN 1121696. Trinamic pkg code K3255Y+3C	05/21/21	AG

<b>Maxim Integrated</b>	<b>TITLE:</b> PACKAGE OUTLINE, 32L, SAWN QFN-CU 5X5X0.9mm		
	<b>DOCUMENT I.D.</b> 21-100589	<b>REVISION</b> A	<b>PAGE</b> 3