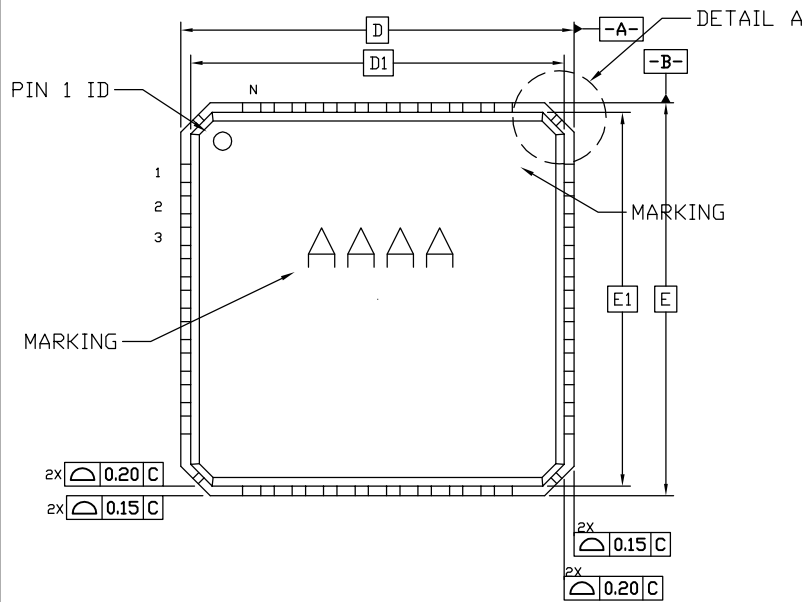
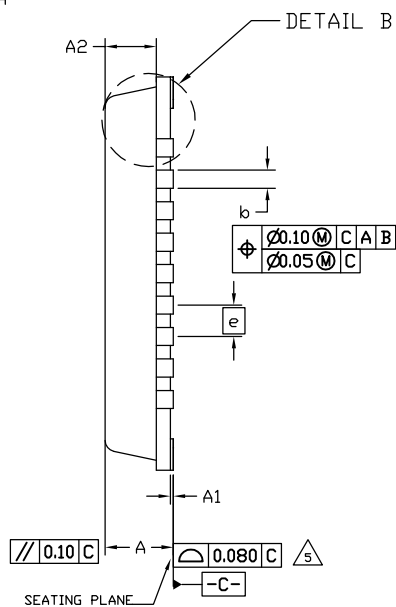


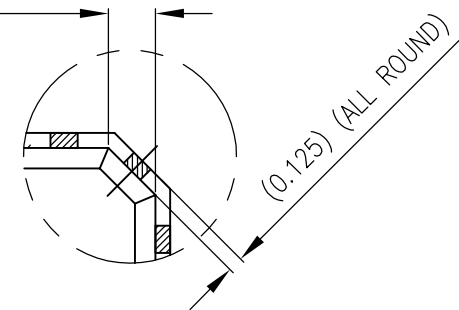
TOP VIEW



SIDE VIEW

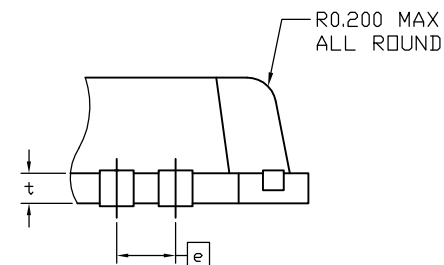
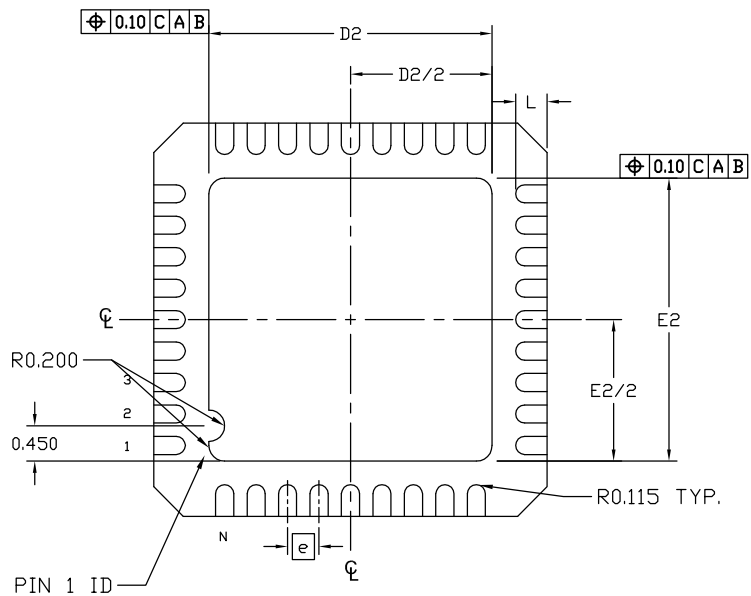


C0.400X45° (4X)



DETAIL "A"

BOTTOM VIEW



DETAIL "B"

-DRAWING NOT TO SCALE-



TITLE:
PACKAGE OUTLINE,
36L PUNCH QFN, 5x5x0.85MM

APPROVAL	DOCUMENT CONTROL NO. 21-1030	REV. A	1/2
----------	---------------------------------	-----------	-----

NOTES:

1. ALL DIMENSIONS ARE IN MILLIMETERS.
 2. DIMENSIONING & TOLERANCES CONFORM TO ASME Y14.5M, - 2009.
 3. PACKAGE IS JEDEC MO-220 COMPLIANT
 4. N IS THE TOTAL NUMBER OF TERMINALS, ND AND NE ARE THE NUMBER OF TERMINALS PER SIDE.
- △ COPLANARITY APPLIES TO BOTH TERMINALS AND HEAT SINK
6. THE PIN #1 IDENTIFIER MUST BE EXISTED ON THE TOP SURFACE OF THE PACKAGE BY USING INDENTATION MARK OR INK/LASER MARKED. DETAILS OF PIN #1 IDENTIFIER IS OPTIONAL, BUT MUST BE LOCATED WITHIN ZONE INDICATED.
 7. MATTE FINISH ON PACKAGE BODY SURFACE (Ra 0.3~1.2 μ m) EXCEPT EJECTION AND PIN 1 MARKING.
 8. FRAME BASE METAL THICKNESS (0.203 BASE)
 9. ALL MOLDED BODY SHARP CORNER RADII (MAX. R0.200) U.O.S.
 10. MARKING SHOWN IS FOR PACKAGE ORIENTATION REFERENCE ONLY.
 11. MATERIAL MUST COMPLY WITH BANNED AND RESTRICTED SUBSTANCES SPEC # 10-0131.
 12. ALL DIMENSIONS APPLY TO BOTH LEADED (-) AND PbfREE (+) PKG. CODES.
 13. PACKAGE CODE: G3655+1

DIM	MILLIMETERS			INCHES		
	MIN	NOM	MAX	MIN	NOM	MAX
A	0.800	0.850	0.900	.031	.033	.035
A1	0.010	0.030	0.050	.000	.001	.002
A2	0.600	0.650	0.700	.024	.026	.028
b	0.180	0.230	0.280	.007	.009	.011
D	4.900	5.000	5.100	.193	.197	.201
D1	4.650	4.750	4.850	.183	.187	.191
D2	3.580	3.600	3.630	.141	.142	.143
E	4.900	5.000	5.100	.193	.197	.201
E1	4.650	4.750	4.850	.183	.187	.191
E2	3.580	3.600	3.630	.141	.142	.143
e	0.390	0.400	0.410	.015	.016	.016
L	0.300	0.400	0.500	.012	.016	.020
t	0.190	-	0.245	.007	-	.010
N	36 LEADS					
ND	9 LEADS					
NE	9 LEADS					



TITLE:
PACKAGE OUTLINE,
36L PUNCH QFN, 5x5x0.85MM

APPROVAL	DOCUMENT CONTROL NO. 21-1030	REV. A	2/2
----------	---------------------------------	-----------	-----