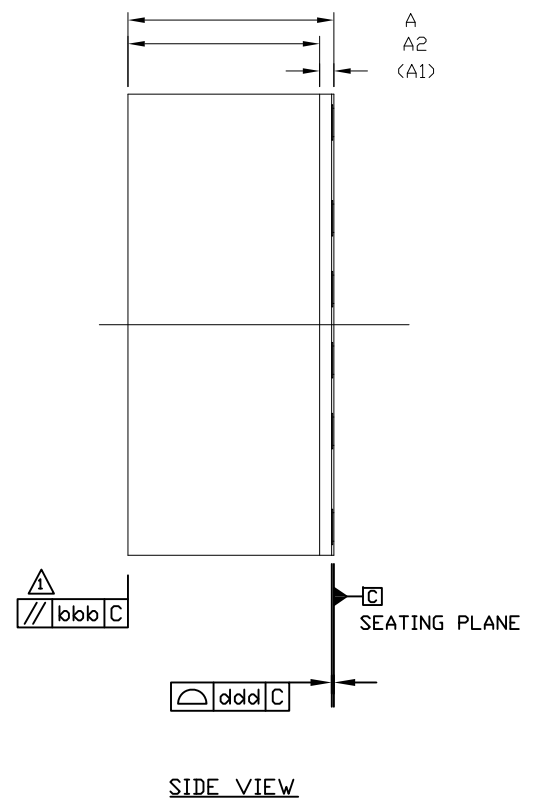
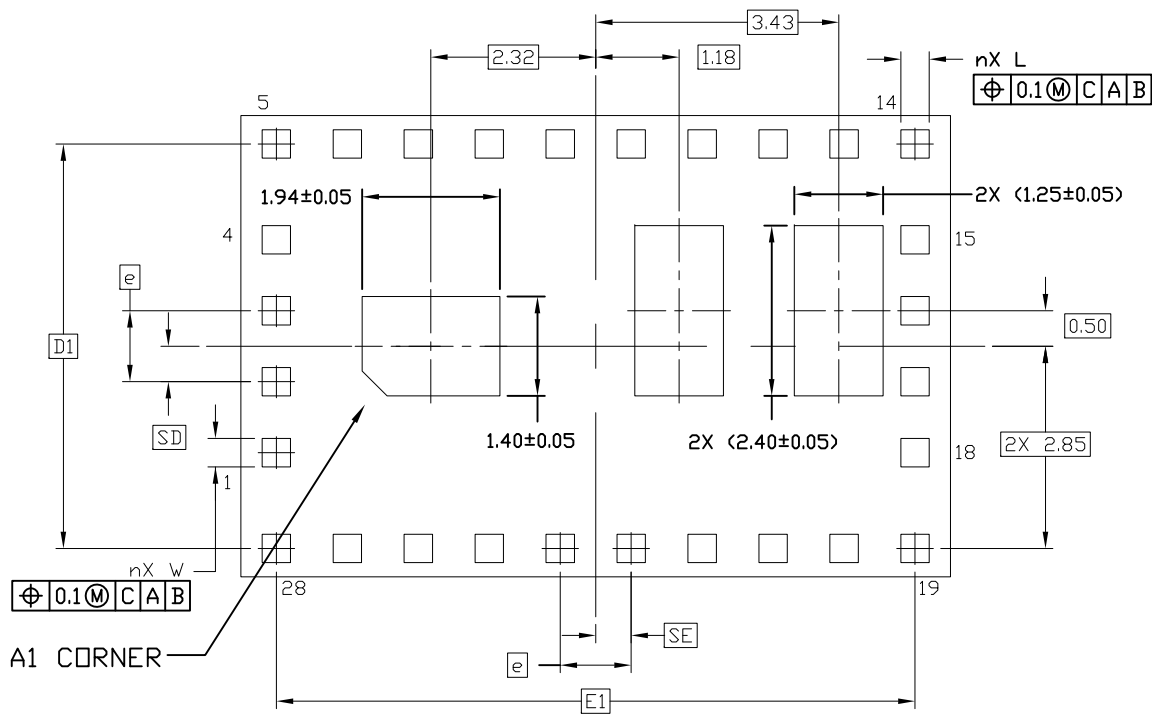



BOTTOM VIEW




**maxim integrated™**

TITLE:  
 PACKAGE OUTLINE, 28L  
 LGA PKG, 6.5x10 mm


APPROVAL	DOCUMENT CONTROL NO. 21-1073	REV. D	1/2
----------	---------------------------------	-----------	-----

-DRAWING NOT TO SCALE-

COMMON DIMENSIONS

	SYMBOL	MIN.	NOM.	MAX.
MOLD THICKNESS	A2	2.7 REF		
BODY SIZE	D	6.5 BSC		
	E	10 BSC		
LEAD WIDTH	W	0.35	0.4	0.45
LEAD LENGTH	L	0.35	0.4	0.45
LEAD PITCH	e	1 BSC		
LEAD COUNT	n	28		
EDGE BALL CENTER TO CENTER	D1	5.7 BSC		
	E1	9 BSC		
BODY CENTER TO CONTACT BALL	SD	0.5 BSC		
	SE	0.5 BSC		
PRE-SOLDER		---	---	---
PACKAGE EDGE TOLERANCE	aaa	0.10		
MOLD FLATNESS	bbb	0.10		
COPLANARITY	ddd	0.10		

NOTES:

1.  PARALLELISM MEASUREMENT SHALL EXCLUDE ANY EFFECT OF MARK ON TOP SURFACE OF PACKAGE
2. DIMENSIONING & TOLERANCING CONFORM TO ASME Y14.5M-1994
2. ALL DIMENSIONS ARE IN MILLIMETERS. ANGLES ARE IN DEGREES
3. n IS THE TOTAL NUMBER OF TERMINALS
4. MARKING SHOWN IS FOR PACKAGE ORIENTATION ONLY
5. ALL DIMENSIONS APPLY TO PBFREE (+) PKGCODE ONLY
6. PACKAGE CODES: L286510+2, L286510+3, L286510+4, L286510+5, L286510+6

DIMENSION VARIATIONS

	SYMBOL	L286510+2; L286510+3; L286510+4; L286510+6			L286510+5		
		MIN.	NOM.	MAX.	MIN.	NOM.	MAX.
TOTAL THICKNESS	A	--	--	2.92	--	--	2.95
SUBSTRATE THICKNESS	A1	0.14	0.18	0.22	0.17	0.21	0.25



TITLE:  
PACKAGE OUTLINE, 28L  
LGA PKG, 6.5x10 mm

APPROVAL	DOCUMENT CONTROL NO. 21-1073	REV. D	2/2
----------	---------------------------------	-----------	-----

-DRAWING NOT TO SCALE-