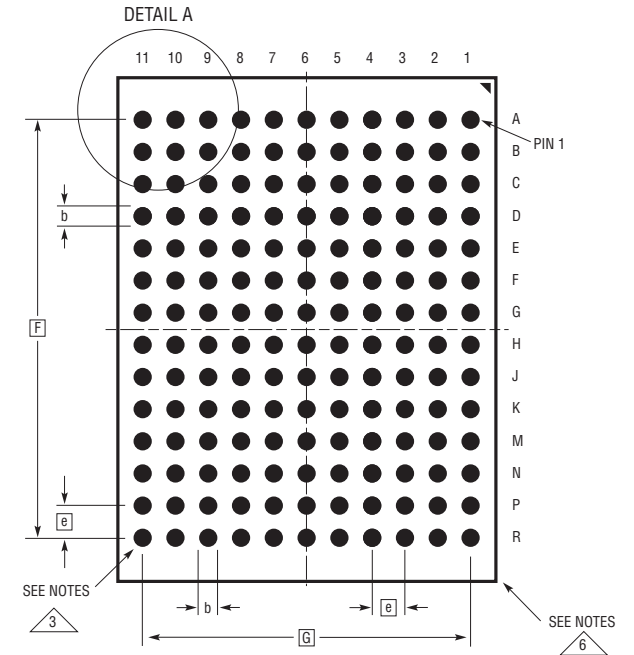
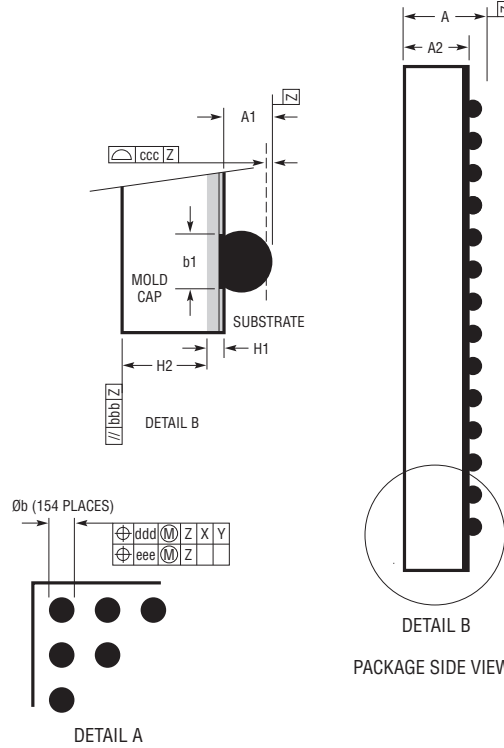
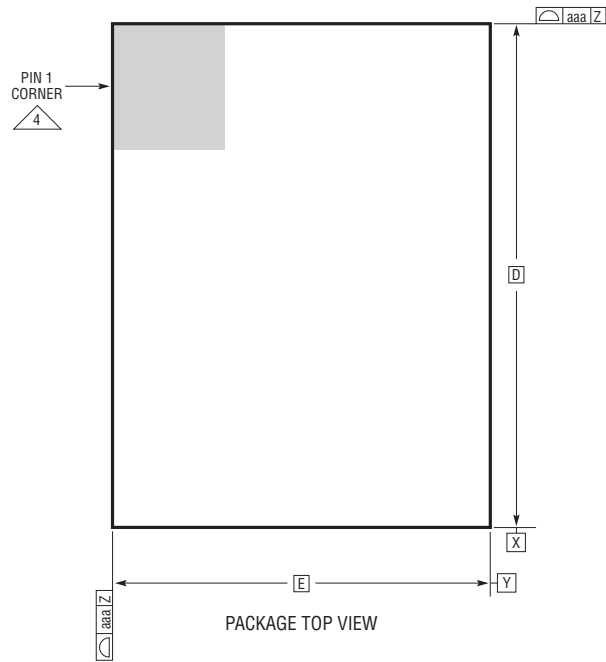
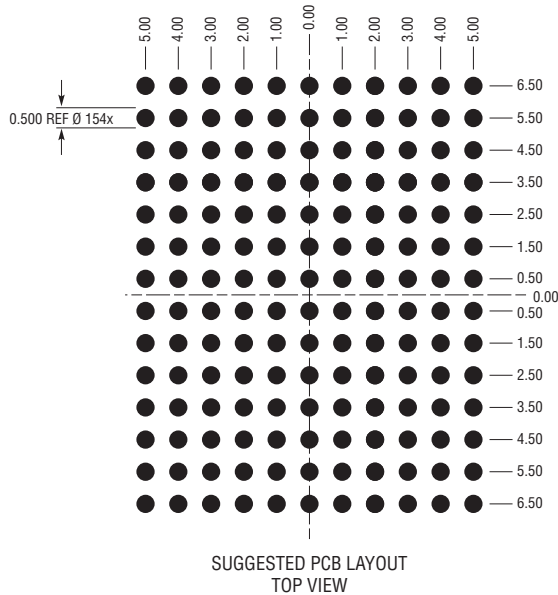


**BGA Package**  
**154-Lead (11.25mm × 15mm × 4.82mm)**  
 (Reference LTC DWG # 05-08-7060 Rev 0)



**NOTES:**

1. DIMENSIONING AND TOLERANCING PER ASME Y14.5M-1994
2. ALL DIMENSIONS ARE IN MILLIMETERS. DRAWING NOT TO SCALE
- 3 BALL DESIGNATION PER JEP95
- 4 DETAILS OF PIN 1 IDENTIFIER ARE OPTIONAL, BUT MUST BE LOCATED WITHIN THE ZONE INDICATED. THE PIN 1 IDENTIFIER MAY BE EITHER A MOLD OR MARKED FEATURE
5. PRIMARY DATUM -Z- IS SEATING PLANE
- 6 PACKAGE ROW AND COLUMN LABELING MAY VARY AMONG μModule PRODUCTS. REVIEW EACH PACKAGE LAYOUT CAREFULLY



| DIMENSIONS |      |          |      |                |
|------------|------|----------|------|----------------|
| SYMBOL     | MIN  | NOM      | MAX  | NOTES          |
| A          | 4.62 | 4.82     | 5.02 |                |
| A1         | 0.40 | 0.50     | 0.60 | BALL HT        |
| A2         | 4.22 | 4.32     | 4.42 |                |
| b          | 0.50 | 0.60     | 0.70 | BALL DIMENSION |
| b1         | 0.47 | 0.50     | 0.53 | PAD DIMENSION  |
| D          |      | 15.00    |      |                |
| E          |      | 11.25    |      |                |
| e          |      | 1.00     |      |                |
| F          |      | 13.00    |      |                |
| G          |      | 10.00    |      |                |
| H1         |      | 0.32 REF |      | SUBSTRATE THK  |
| H2         |      | 4.00 REF |      | MOLD CAP HT    |
| aaa        |      |          | 0.15 |                |
| bbb        |      |          | 0.10 |                |
| ccc        |      |          | 0.20 |                |
| ddd        |      |          | 0.25 |                |
| eee        |      |          | 0.10 |                |

TOTAL NUMBER OF BALLS: 154

