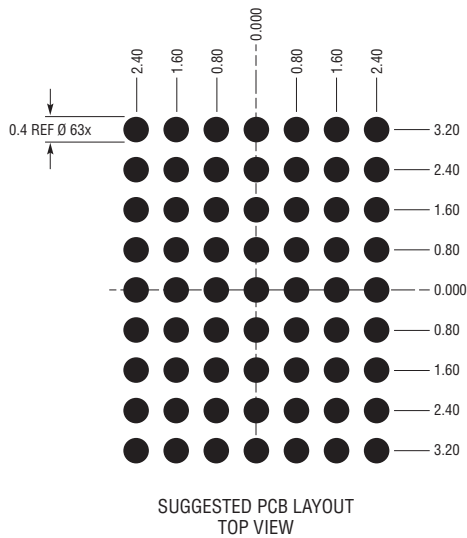
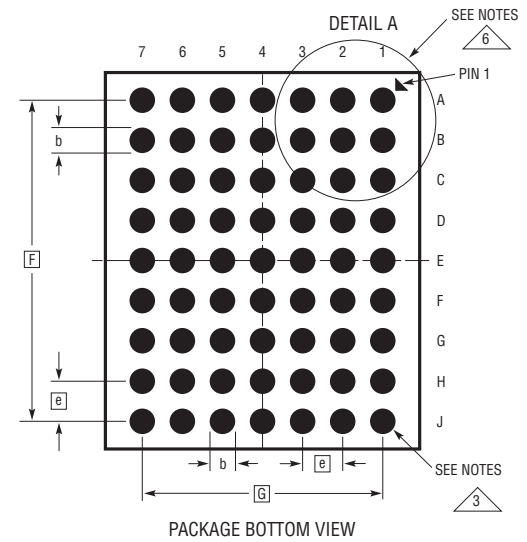
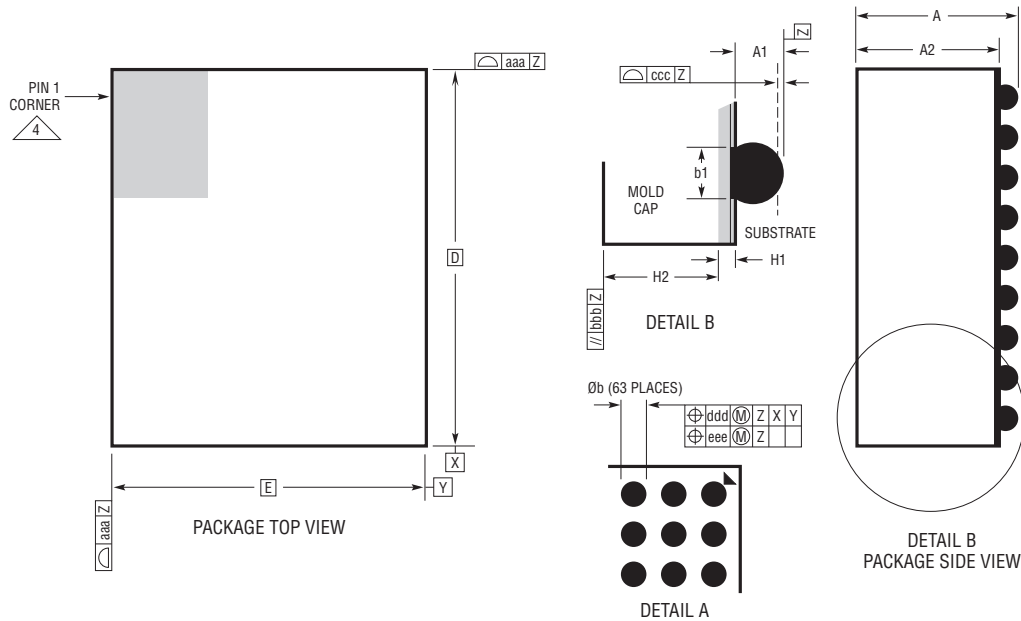


**BGA Package**  
**63-Lead (6.25mm × 7.50mm × 3.22mm)**  
 (Reference LTC DWG # 05-08-7023 Rev 0)



| DIMENSIONS |      |          |      |                |
|------------|------|----------|------|----------------|
| SYMBOL     | MIN  | NOM      | MAX  | NOTES          |
| A          | 3.03 | 3.22     | 3.41 |                |
| A1         | 0.30 | 0.40     | 0.50 | BALL HT        |
| A2         | 2.73 | 2.82     | 2.91 |                |
| b          | 0.45 | 0.50     | 0.55 | BALL DIMENSION |
| b1         | 0.37 | 0.40     | 0.43 | PAD DIMENSION  |
| D          |      | 7.50     |      |                |
| E          |      | 6.25     |      |                |
| e          |      | 0.80     |      |                |
| F          |      | 6.40     |      |                |
| G          |      | 4.80     |      |                |
| H1         |      | 0.32 REF |      | SUBSTRATE THK  |
| H2         |      | 2.50 REF |      | MOLD CAP HT    |
| aaa        |      |          | 0.15 |                |
| bbb        |      |          | 0.10 |                |
| ccc        |      |          | 0.20 |                |
| ddd        |      |          | 0.15 |                |
| eee        |      |          | 0.08 |                |

- NOTES:  
 1. DIMENSIONING AND TOLERANCING PER ASME Y14.5M-1994  
 2. ALL DIMENSIONS ARE IN MILLIMETERS

- 3 BALL DESIGNATION PER JEP95  
 4 DETAILS OF PIN 1 IDENTIFIER ARE OPTIONAL, BUT MUST BE LOCATED WITHIN THE ZONE INDICATED. THE PIN 1 IDENTIFIER MAY BE EITHER A MOLD OR MARKED FEATURE  
 5. PRIMARY DATUM -Z- IS SEATING PLANE  
 6 PACKAGE ROW AND COLUMN LABELING MAY VARY AMONG PRODUCTS. REVIEW EACH PACKAGE LAYOUT CAREFULLY

