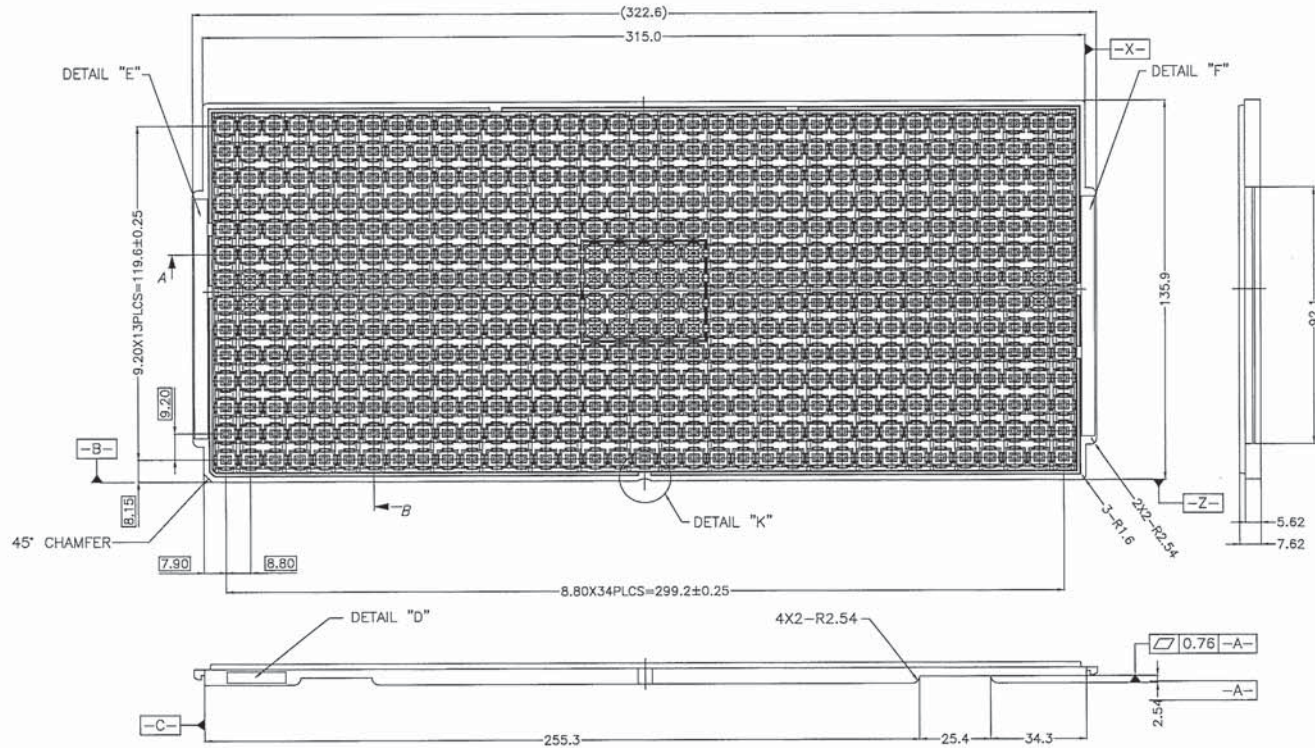


REV	DESCRIPTION	DATE	APPROVED
00	INITIAL COMPOSITE DRAWING		



LGA 5mm X 6mm
KS-870327 REV.00

DETAIL "D"
(SCALE:2/1)

⊗ ⊙
DATE DETAIL
(SCALE:2/1)
XX : Year
(09,10,11,.....)
X : Month
(1,2,3,4,5,6,7,8,9,X,Y,Z)



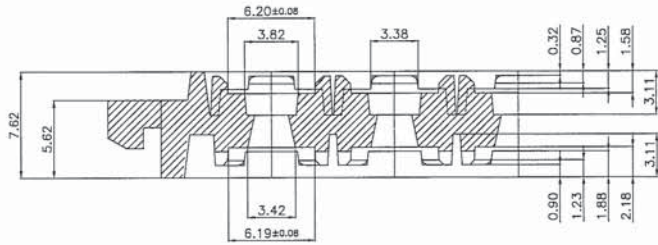
DETAIL "E"
(SCALE:2/1)



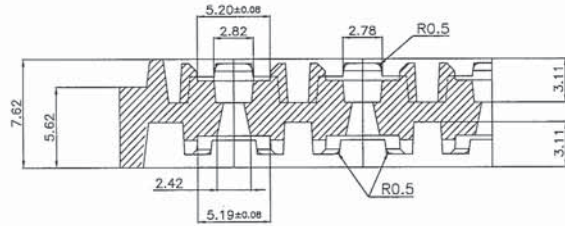
DETAIL "F"
(SCALE:2/1)

 1630 McCarthy Blvd. Milpitas, CA. 95035 Phone: 408-432-1900 LTC Confidential		PIECE PART DRAWING BGA 5.0MM X 6.0MM BLACK TRAY	
		DRAWING NO. 50-8016	
APPROVALS	DATE:	TOLERANCES UNLESS OTHERWISE SPECIFIED:	
DRAWN: MOTHIEND / D.PRUITT		FRACTIONS N/A	DECIMALS XXX ± 0.03 XX.XX ± 0.05
CHECKED: R.RANGANATHAN		SCALE N/A	ANGLES ± 1
		SIZE N/A	SHEET 1 OF 4

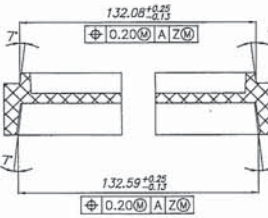
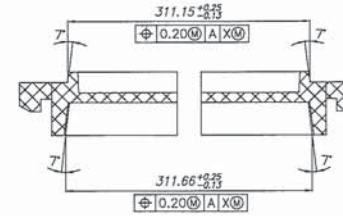
REV	DESCRIPTION	DATE	APPROVED
00	INITIAL COMPOSITE DRAWING		



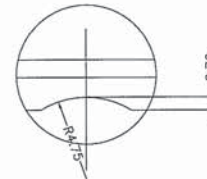
SECTION "A-A"
(SCALE:5/1)



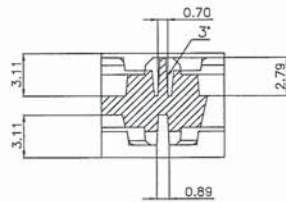
SECTION "B-B"
(SCALE:5/1)



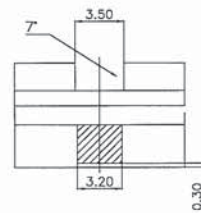
TRAY STACKING DETAIL
(SCALE:4/1)



DETAIL "K"
(SCALE:5/1)



VACUUM CELL
(SCALE:5/1)



SLIP LOCK
(SCALE:5/1)

LINEAR
TECHNOLOGY
1630 McCarthy Blvd.
Milpitas, CA. 95035
Phone: 408-432-1900
LTC Confidential

PIECE PART DRAWING
BGA 5.0MM X 6.0MM
BLACK TRAY

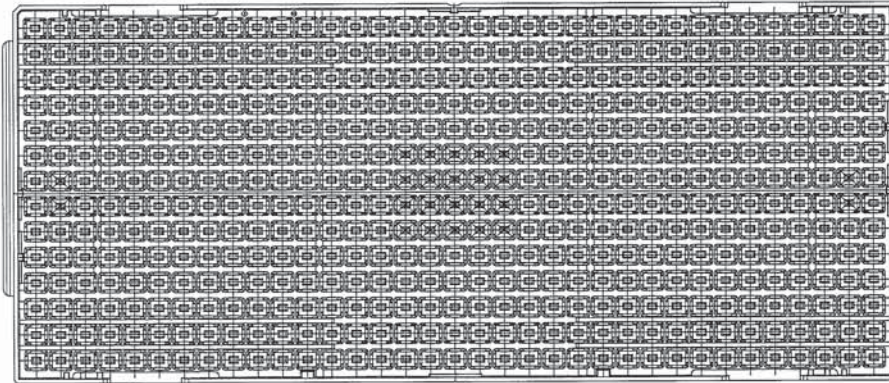
DRAWING NO.

50-8016

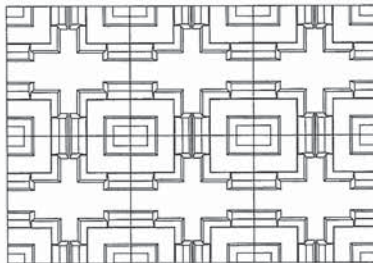
APPROVALS	DATE:
DRAWN: M.OTHENO / D.PRUITT	
CHECKED: R.RANGANATHAN	

TOLERANCES UNLESS OTHERWISE SPECIFIED:			
FRACTIONS N/A	DECIMALS XXX ± 0.25 XX ± 0.13	ANGLES ± 1	
SCALE N/A	SIZE N/A	SHEET 2 OF 4	

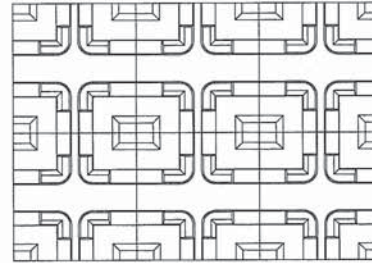
REV	DESCRIPTION	DATE	APPROVED
00	INITIAL COMPOSITE DRAWING		




BOTTOM VIEW



TOP VIEW
(SCALE:5/1)

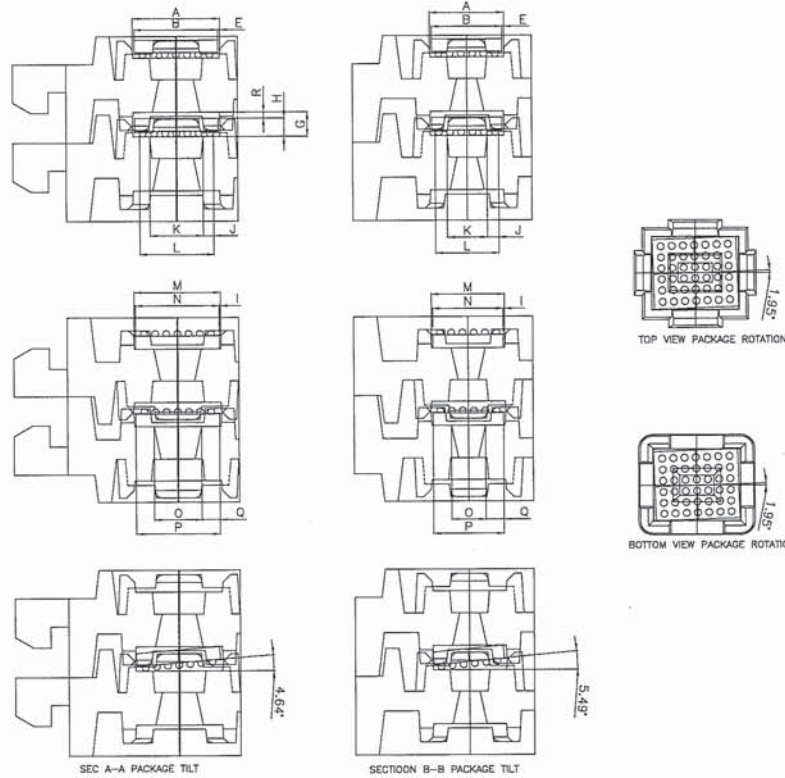


BOTTOM VIEW
(SCALE:5/1)

 1630 McCarthy Blvd. Milpitas, CA. 95035 Phone: 408-432-1900 LTC Confidential		PIECE PART DRAWING BGA 5.0MM X 6.0MM BLACK TRAY		
		DRAWING NO.		50-8016
APPROVALS	DATE:	TOLERANCES UNLESS OTHERWISE SPECIFIED:		
DRAWN: M.O'THIEND / D.PRUITT		FRACTIONS N/A	DECIMALS X.XXX = ± 0.05 X.XXXX = ± 0.13	ANGLES ± 1
CHECKED: R.RANGANATHAN		SCALE N/A	SIZE N/A	SHEET 3 OF 4

REV	DESCRIPTION	DATE	APPROVED
00	INITIAL COMPOSITE DRAWING		

Package Body Size	BGA 5X6X1.3
Linear Package Dwg. no.	05-08-1551 REV 0
Kostat Tray Dwg. no.	KS-870327(00)



SIMULATION CRITERIA						
1	A>B	PACKAGE SEATING				
2	E>D	PACKAGE LATERAL PLAY				
3	G>H	PACKAGE VERTICAL PLAY				
4	R>D	PACKAGE VERTICAL GAP				
5	R1<D	NO DOUBLE UNITS				
6	K>L	PACKAGE NESTING PLAY				
8	J>D	PACKAGE FELL OFF THE SHELF				
7	M>N	PACKAGE SEATING PLAY(FLIPPED)				
8	I>D	PACKAGE LATERAL PLAY(FLIPPED)				
9	O<P	PACKAGE NESTING(FLIPPED)				
10	Q>D	PACKAGE NESTING PLAY(FLIPPED)				

No.	Item	Section A-A Condition	Nominal			Result
			Nom Tray	WC1 Max Tray	WC2 Min Tray	
1	Tray	A	6.270	6.350	6.190	PASS
	Pkg	B	6.000	5.900	6.100	
2	Gap	$E=(A-B)/2$	0.135	0.225	0.045	PASS
	Tray	G	1.730	1.860	1.600	
3	Pkg	H	0.900	0.800	1.000	PASS
	Gap	$R=(G-H)$	0.830	1.060	0.600	
5	Gap	$R1=(G-2H)$	-0.070	0.260	-0.400	FAIL
	Tray	K	3.820	3.950	3.690	
6	Pkg	L	5.300	5.200	5.400	PASS
	Gap	$J=(L-K)/2$	1.480	1.250	1.710	
7	Tray	M	6.190	6.270	6.110	PASS
	Pkg	N	6.000	5.900	6.100	
8	Gap	$I=(M-N)/2$	0.095	0.185	0.005	PASS
	Tray	O	3.420	3.550	3.290	
9	Pkg	P	6.000	5.900	6.100	PASS
	Gap	$Q=(P-O)/2$	1.290	1.175	1.405	

No.	Item	Section B-B Condition	Nominal			Result
			Nom Tray	WC1 Max Tray	WC2 Min Tray	
1	Tray	A	5.270	5.350	5.190	PASS
	Pkg	B	5.000	4.900	5.100	
2	Gap	$E=(A-B)/2$	0.135	0.225	0.045	PASS
	Tray	C	1.730	1.860	1.600	
3	Pkg	H	0.900	0.800	1.000	PASS
	Gap	$R=(G-H)$	0.830	1.060	0.600	
5	Gap	$R1=(G-2H)$	-0.070	0.260	-0.400	FAIL
	Tray	K	2.820	2.950	2.690	
6	Pkg	L	4.500	4.400	4.600	PASS
	Gap	$J=(L-K)/2$	1.880	1.450	1.910	
7	Tray	M	5.190	5.270	5.110	PASS
	Pkg	N	5.000	4.900	5.100	
8	Gap	$I=(M-N)/2$	0.095	0.185	0.005	PASS
	Tray	O	2.420	2.550	2.290	
9	Pkg	P	5.000	4.900	5.100	PASS
	Gap	$Q=(P-Q)/2$	1.290	1.175	1.405	

LINEAR TECHNOLOGY
 1630 McCarthy Blvd.
 Milpitas, CA. 95035
 Phone: 408-432-1900
 LTC Confidential

PIECE PART DRAWING
 BGA 5.0MM X 6.0MM
 BLACK TRAY

DRAWING NO.

50-8016

APPROVALS: _____ DATE: _____
 DRAWN: M.DTHIEND / D.PRUITT
 CHECKED: R.RANGANATHAN

TOLERANCES UNLESS OTHERWISE SPECIFIED:

FRACTIONS: N/A
 DECIMALS: XXXX ± 0.025
 ANGLES: ± 1
 SCALE: N/A
 SIZE: N/A
 SHEET: 4 DF 4