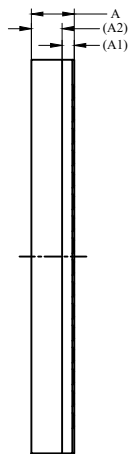
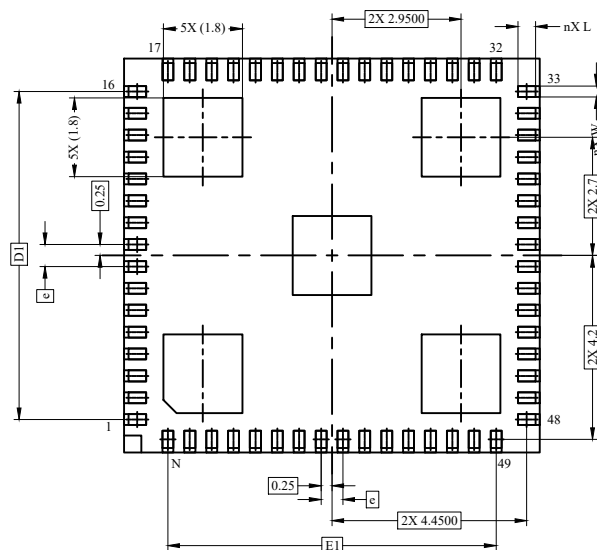


TOP VIEW



SIDE VIEW

COMMON DIMENSIONS			
DIM	MIN.	NOM.	MAX.
A	-	-	1.10
A1		0.28	REF
A2		0.70	REF
D		9.0	BSC
E		9.5	BSC
W	0.20	0.25	0.30
L	0.35	0.40	0.45
e		0.5	BSC
N		64	
D1		7.5	BSC
E1		7.5	BSC
aaa		0.1	
bbb		0.1	
ddd		0.08	




BOTTOM VIEW

NOTES:

1. ALL DIMENSIONS ARE IN MILLIMETERS. ANGLES ARE IN DEGREES.
2. DIMENSIONING AND TOLERANCING CONFORM TO ASME Y14.5-2009
3. N IS THE TOTAL NUMBER OF TERMINALS.
4. PIN #1 ID ON TOP WILL BE LASER MARKED.
5. MATERIAL MUST BE COMPLIANT WITH MAXIM SPECIFICATION 10-0131 FOR SUBSTANCE CONTENT, MUST BE Eu ROHS COMPLIANT WITHOUT EXEMPTION AND PB-FREE.
6. ALL DIMENSIONS APPLY TO PbFREE (+) PARTS.
7. PACKAGE CODES: L649A9M-1

-DRAWING NOT TO SCALE-

		
TITLE: PACKAGE OUTLINE 64L LGA 9.5 x 9.0 x 1.1mm		
APPROVAL	DOCUMENT CONTROL NO. 21-100274	REV. A 1/1