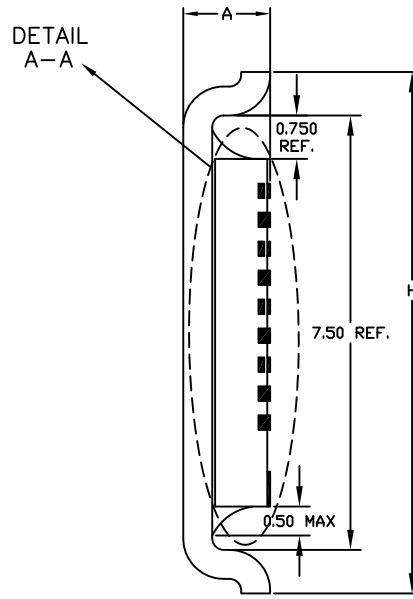
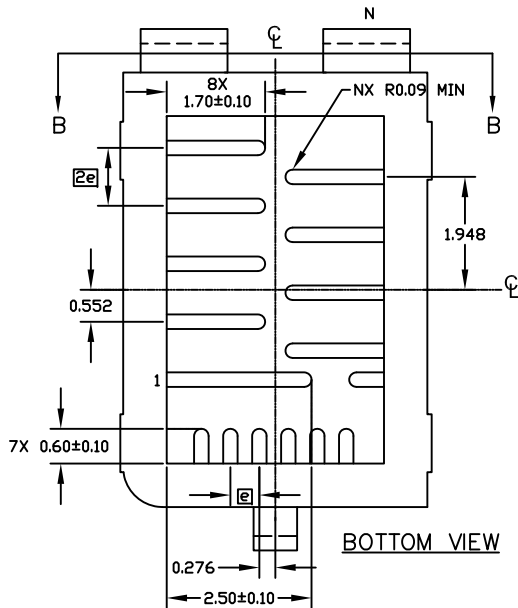


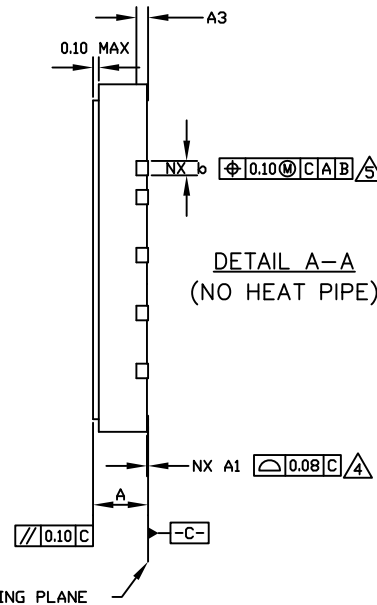
TOP VIEW



SIDE VIEW
(WITH HEAT PIPE)



BOTTOM VIEW

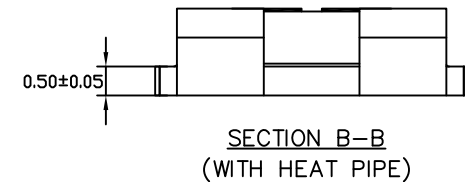


DETAIL A-A
(NO HEAT PIPE)

DIM	MILLIMETERS			INCHES		
	MIN	NOM	MAX	MIN	NOM	MAX
A(HP)	1.40	1.50	1.60	.055	.059	.063
A(ND HP)	0.90	0.95	1.00	.035	.037	.039
A1	0.00	0.02	0.05	.000	.001	.002
A3	0.20 REF			.008 REF		
b	0.20	0.25	0.30	.008	.010	.012
D(HP)	5.05	5.25	5.45	.199	.207	.215
D1	3.75 BSC			.148 BSC		
E(HP)	7.30	7.50	7.75	.287	.295	.305
E1	6.00 BSC			.236 BSC		
e	0.50 BSC			.020 BSC		
H(HP)	8.80	9.00	9.20	.346	.354	.362
N	19 PINS			19 PINS		

NOTES:

- ALL DIMENSIONS ARE IN MILLIMETERS UNLESS OTHERWISE SPECIFIED.
- N IS THE TOTAL NUMBER OF TERMINALS.
- DIMENSIONING & TOLERANCING CONFORM TO ASME Y14.5-2009.
- COPLANARITY APPLIES TO THE TERMINALS AND ALL OTHER BOTTOM SURFACE METALLIZATION.
- DIMENSION b APPLIES TO METALLIZED TERMINAL AND IS MEASURED BETWEEN 0.15MM AND 0.30MM FROM THE TERMINAL TIP. IF THE TERMINAL HAS THE OPTIONAL RADIUS ON THE OTHER END OF THE TERMINAL, THE DIMENSION b SHOULD NOT BE MEASURED IN THAT RADIUS AREA.
- MARKING SHOWN IS FOR PACKAGE ORIENTATION REFERENCE ONLY.
- MATERIAL MUST BE COMPLIANT WITH MAXIM SPECIFICATION 10-0131 FOR SUBSTANCE CONTENT, MUST BE Eu R0HS COMPLIANT WITHOUT EXEMPTION AND PB-FREE.
- ALL DIMENSIONS APPLY TO PbFREE (+) PKG. CODE ONLY.
- PACKAGE CODE: P197A5FP+1.



SECTION B-B
(WITH HEAT PIPE)

-DRAWING NOT TO SCALE-


maxim integrated™

TITLE:
PACKAGE OUTLINE, 19L HPFCQFN,
5.25x7.50x1.50mm

APPROVAL	DOCUMENT CONTROL NO. 21-100025	REV. A	1/1
----------	-----------------------------------	--------	-----