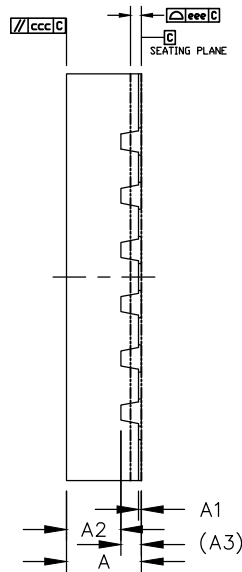
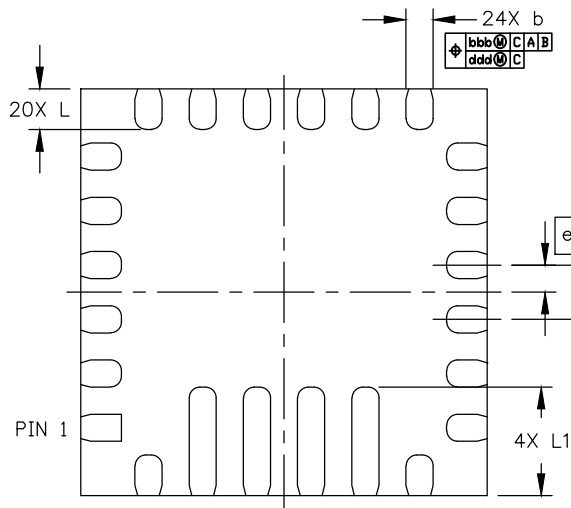


TOP VIEW



SIDE VIEW

	SYMBOL	MIN	NOM	MAX
TOTAL THICKNESS	A	0.5	0.55	0.6
STAND OFF	A1	0	0.02	0.05
MOLD THICKNESS	A2	---	0.4	---
L/F THICKNESS	A3	0.152 REF		
LEAD WIDTH	b	0.15	0.2	0.25
BODY SIZE	X	D 3 BSC		
	Y	E 3 BSC		
LEAD PITCH	e	0.4 BSC		
LEAD LENGTH	L	0.2	0.3	0.4
	L1	0.7	0.8	0.9
PACKAGE EDGE TOLERANCE	aaa	0.1		
MOLD FLATNESS	ccc	0.1		
COPLANARITY	eee	0.08		
LEAD OFFSET	bbb	0.07		
	ddd	0.05		



BOTTOM VIEW

NOTES:

1. ALL DIMENSIONS ARE IN MILLIMETERS UNLESS OTHERWISE SPECIFIED.
2. DIMENSIONING & TOLERANCING CONFORM TO ASME Y14.5-2009.
3. COPLANARITY APPLIES TO THE TERMINALS AND ALL OTHER BOTTOM SURFACE METALLIZATION.
4. MARKING SHOWN IS FOR PACKAGE ORIENTATION REFERENCE ONLY.
5. MATERIAL MUST BE COMPLIANT WITH MAXIM SPECIFICATION 10-0131 FOR SUBSTANCE CONTENT, MUST BE Eu ROHS COMPLIANT WITHOUT EXEMPTION AND PB-FREE.
6. ALL DIMENSIONS APPLY TO PbFREE (+) PKG. CODE ONLY.
7. REFER TO JEDEC MO-220;
8. FINISH: Cu/EP • Sn8~20s (for normal QFN DFN)
9. PACKAGE CODE: F243A3F+2

-DRAWING NOT TO SCALE-

 maxim integrated		
TITLE: PACKAGE OUTLINE, 24L FC2QFN 3x3x0.55mm		
APPROVAL TONY LIN	DOCUMENT CONTROL NO. 21-100580	REV. C 1/1