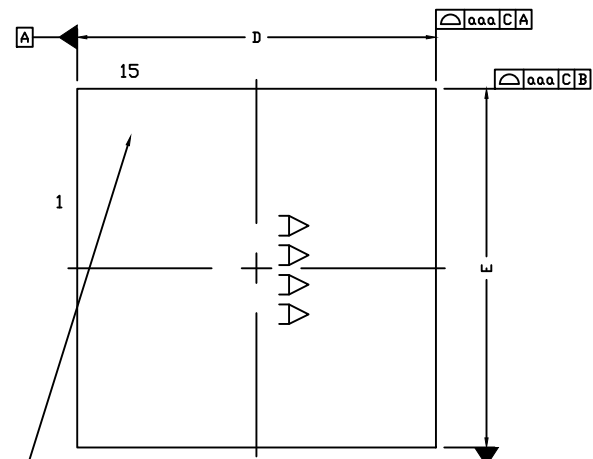


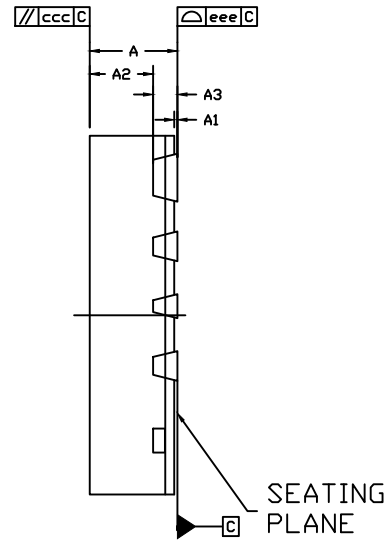
* CONTROLLING DIMENSION : MM

SYMBOL	MILLIMETER		
	MIN.	NDM.	MAX.
A	0.700	0.750	0.800
A1	0.000	—	0.050
A2	0.480	0.530	0.580
A3		0.203	REF.
b	0.150	0.200	0.250
b1	0.200	0.250	0.300
b2	0.350	0.400	0.450
b3	0.450	0.500	0.550
D	3	BSC	
E	3	BSC	
L	0.275	0.375	0.475
L1	0.300	0.400	0.500
L2	0.425	0.525	0.625
L3	0.450	0.550	0.650
L4	0.550	0.650	0.750
L5	0.985	1.085	1.185
e	0.475	BSC	
e1	0.500	BSC	
e2	0.575	BSC	
e3	1.100	BSC	
e4	0.563	BSC	
K1	0.075	BSC	
K2	0.250	BSC	
K3	0.275	BSC	
K4	0.350	BSC	
K5	0.400	BSC	
K6	0.188	BSC	
TOLERANCES OF FORM AND POSITION			
aaa	0.100		
bbb	0.100		
ccc	0.100		
ddd	0.050		
eee	0.080		

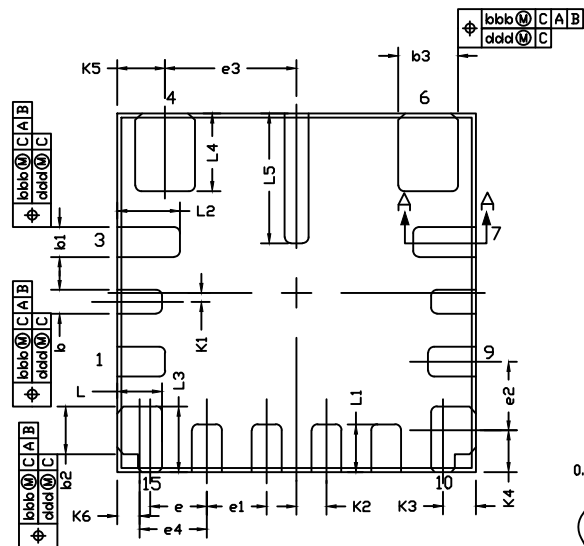


LASER MARK FOR PIN 1 IDENTIFICATION IN THIS AREA

TOP VIEW



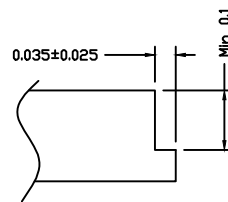
SIDE VIEW



BOTTOM VIEW

NOTES :

1. ALL DIMENSIONS ARE IN MILLIMETERS.
2. DIMENSIONING & TOLERANCES CONFORM TO ASME Y14.5M, -1994.
3. THE PIN #1 IDENTIFIER MUST BE PLACED ON THE TOP SURFACE OF THE PACKAGE BY USING INDENTATION MARK OR OTHER FEATURE OF PACKAGE BODY.
4. EXACT SHAPE AND SIZE OF THIS FEATURE IS OPTIONAL.
5. PACKAGE WARPAGE MAX 0.08 mm.
6. APPLIED FOR EXPOSED PAD AND TERMINALS. EXCLUDE EMBEDDING PART OF EXPOSED PAD FROM MEASURING.
7. APPLIED ONLY TO TERMINALS.
8. PACKAGE CODE IS F153B3FY+1



SECTION A-A (1/5)

-DRAWING NOT TO SCALE-



TITLE:
PACKAGE OUTLINE, 15L, FC2QFN PKG
3.0x3.0x0.75mm

APPROVAL
ANU SRIVASTAVA

DOCUMENT CONTROL NO.
21-100532

REV. B 1/1