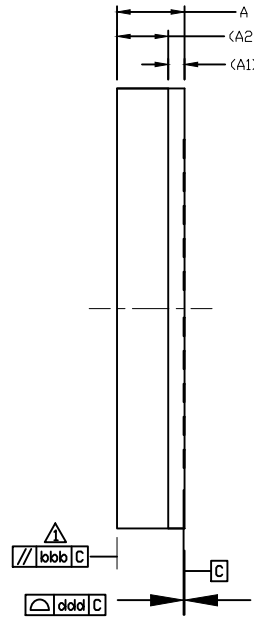
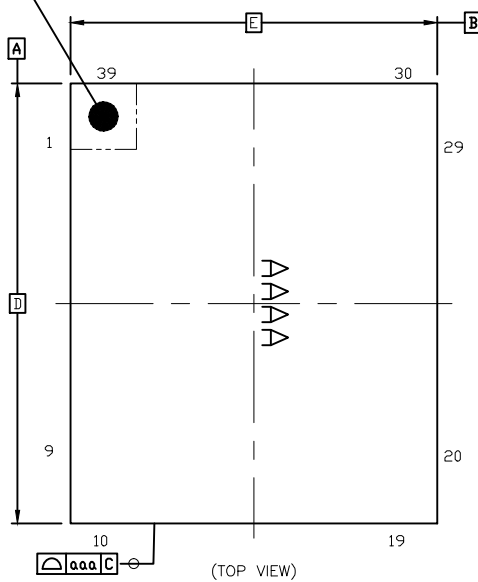
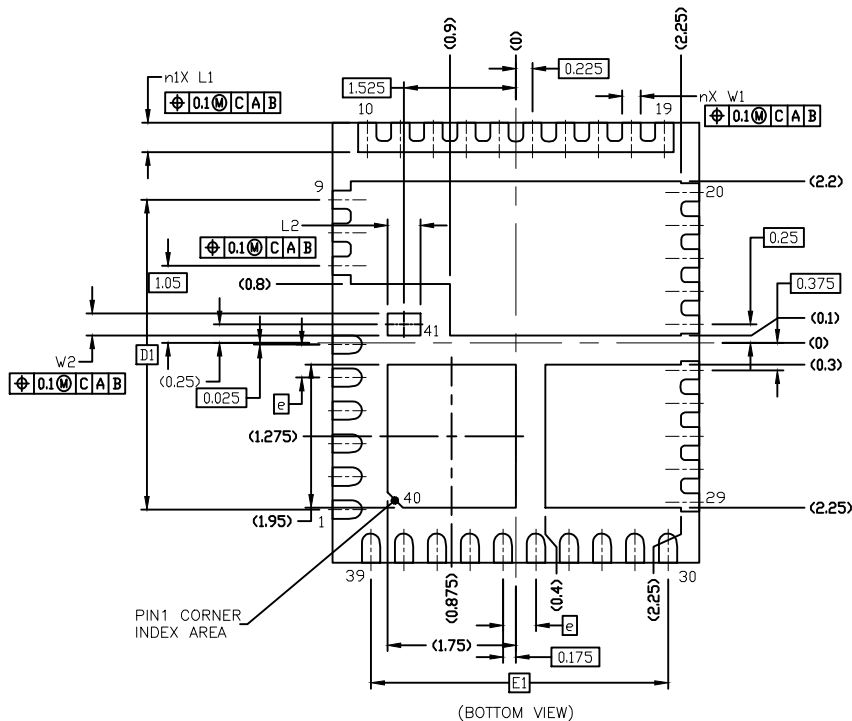


PIN1 CORNER INDEX AREA



	SYMBOL	COMMON DIMENSIONS		
		MIN.	NDR.	MAX.
OTAL THICKNESS	A	---	0.92	1
SUBSTRATE THICKNESS	A1		0.22	REF
MOLD THICKNESS	A2		0.7	REF
BODY SIZE	D		6	BSC
	E		5	BSC
LEAD WIDTH	W1	0.2	0.25	0.3
	W2	0.25	0.3	0.35
LEAD LENGTH	L1	0.35	0.4	0.45
	L2	0.4	0.45	0.5
LEAD PITCH	e		0.45	BSC
LEAD COUNT	n		39	
	n1		26	
EDGE LEAD CENTER TO CENTER	D1		4.225	BSC
	E1		4.05	BSC
BODY CENTER TO CONTACT LEAD	SD		---	BSC
	SE		---	BSC
PRE-SOLDER		---	---	---
PACKAGE EDGE TOLERANCE	aaa		0.1	
MOLD FLATNESS	bbb		0.2	
COPLANARITY	ddd		0.08	



NOTES:

1. ALL DIMENSIONS ARE IN MILLIMETERS UNLESS OTHERWISE SPECIFIED.
2. DIMENSIONING & TOLERANCING CONFORM TO ASME Y14.5M-1994.
3. THE TERMINAL #1 IDENTIFIER AND TERMINAL NUMBERING CONVENTION SHALL CONFORM TO JESD 95-1 SPP-012. DETAILS OF TERMINAL #1 IDENTIFIER ARE OPTIONAL, BUT MUST BE LOCATED WITHIN THE ZONE INDICATED. THE TERMINAL #1 IDENTIFIER MAY BE EITHER A MOLD OR MARKED FEATURE.
4. COPLANARITY APPLIES TO TERMINALS AND ALL OTHER BOTTOM SURFACE METALLIZATIONS.
5. MARKING IS FOR PACKAGE ORIENTATION REFERENCE ONLY.
6. MATERIAL MUST BE COMPLIANT WITH MAXIM SPECIFICATION 10-0131 FOR SUBSTANCE CONTENT, MUST BE EU ROHS COMPLIANT WITHOUT EXEMPTION AND PB-FREE.
7. ALL DIMENSIONS APPLY TO PbFREE (+) PKG. CODES.
8. PKG CODE: F415A6F+1



TITLE:
PACKAGE OUTLINE, 41L FC2QFN
5x6x0.92 mm FC

APPROVAL
JIE MAD

DOCUMENT CONTROL NO.
21-100508

REV. 1
A 1/1

-DRAWING NOT TO SCALE-