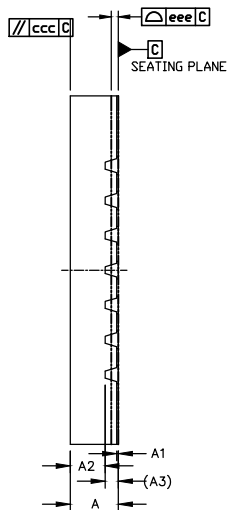
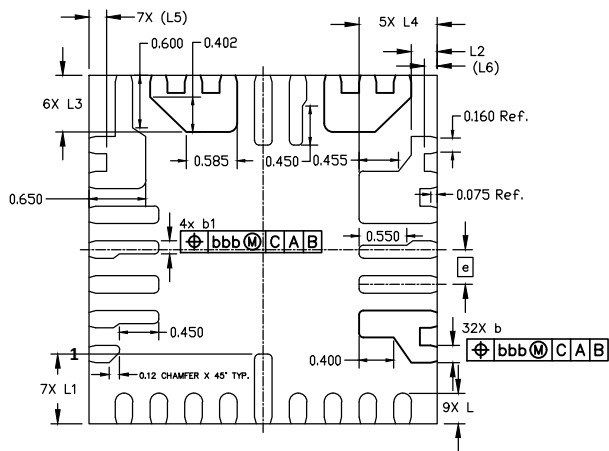


TOP VIEW



SIDE VIEW



BOTTOM VIEW

	SYMBOL	MIN	NOM	MAX
TOTAL THICKNESS	A	0.5	0.55	0.6
STAND OFF	A1	0	0.02	0.05
MOLD THICKNESS	A2	---	0.4	---
L/F THICKNESS	A3	0.152 REF		
LEAD WIDTH	b	0.15	0.2	0.25
	b1	0.1	0.15	0.2
BODY SIZE	X	D	4 BSC	
	Y	E	4 BSC	
LEAD PITCH	e	0.4 BSC		
LEAD LENGTH	L	0.25	0.35	0.45
	L1	0.7	0.8	0.9
	L2	0.2	0.3	0.4
	L3	0.55	0.65	0.75
	L4	0.8	0.9	1
LEAD EDGE TO PKG EDGE	L5	0.2 REF		
	L6	0.15 REF		
PACKAGE EDGE TOLERANCE	aaa	0.1		
MOLD FLATNESS	ccc	0.1		
COPLANARITY	eee	0.08		
LEAD OFFSET	bbb	0.07		

NOTES

1. REFER TO JEDEC MO-220;
2. COPLANARITY APPLIES TO LEADS, CORNER LEADS AND DIE ATTACH PAD;
3. BAN TO USE THE LEVEL 1 ENVIRONMENT-RELATED SUBSTANCES OF JCET SPECS;
4. FINISH: Cu/EP • Sn8~20s
5. MAXIM PKG CODE : F234A4F+1
6. MATERIAL MUST BE COMPLIANT WITH MAXIM SPECIFICATION 10-0131 FOR SUBSTANCE CONTENT, MUST BE Eu ROHS COMPLIANT WITHOUT EXEMPTION AND PB-FREE.



TITLE:  
PACKAGE OUTLINE, 23L FC2QFN  
4x4x0.55mm

APPROVAL  
TONY LIN

DOCUMENT CONTROL NO.  
21-100411

REV. 1  
E

-DRAWING NOT TO SCALE-