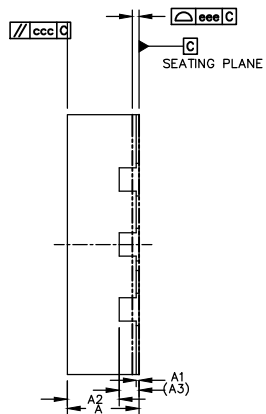
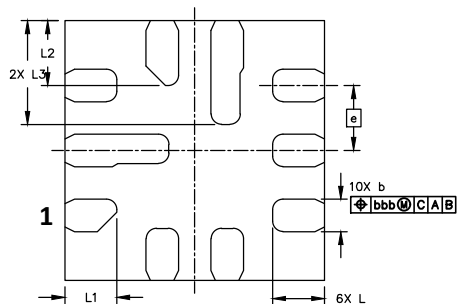


TOP VIEW



SIDE VIEW

	SYMBOL	MIN	NOM	MAX
TOTAL THICKNESS	A	0.5	0.55	0.6
STAND OFF	A1	0	0.02	0.05
MOLD THICKNESS	A2	---	0.4	---
L/F THICKNESS	A3	0.152 REF		
LEAD WIDTH	b1	0.2	0.25	0.3
BODY SIZE	X	D		
	Y	E		
LEAD PITCH	e	0.5 BSC		
LEAD LENGTH	L	0.35	0.4	0.45
	L1	0.3	0.4	0.5
	L2	0.4	0.5	0.6
	L3	0.75	0.8	0.85
PACKAGE EDGE TOLERANCE	aaa	0.1		
MOLD FLATNESS	ccc	0.1		
COPLANARITY	eee	0.05		
LEAD OFFSET	bbb	0.1		



BOTTOM VIEW

NOTES

- 1.REFER TO JEDEC MO-220;
- 2.COPLANARITY APPLIES TO LEADS, CORNER LEADS AND DIE ATTACH PAD;
- 3.BAN TO USE THE LEVEL 1 ENVIRONMENT-RELATED SUBSTANCES PER JCET SPECS.
- 4.FINISH: Cu/EP • Sn8~20s
- 5.MAXIM PKG CODE : F102A2F-1
- 6.MATERIAL MUST BE COMPLIANT WITH MAXIM SPECIFICATION 10-0131 FOR SUBSTANCE CONTENT, MUST BE Eu ROHS COMPLIANT WITHOUT EXEMPTION AND PB-FREE.

-DRAWING NOT TO SCALE-

TITLE: PACKAGE OUTLINE, 10L FC2QFN 2x2x0.55mm		
APPROVAL	DOCUMENT CONTROL NO. 21-100376	REV. B 1/1