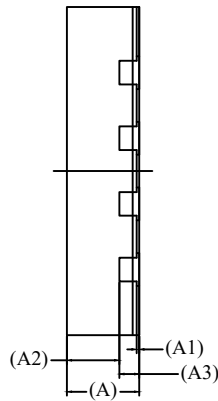
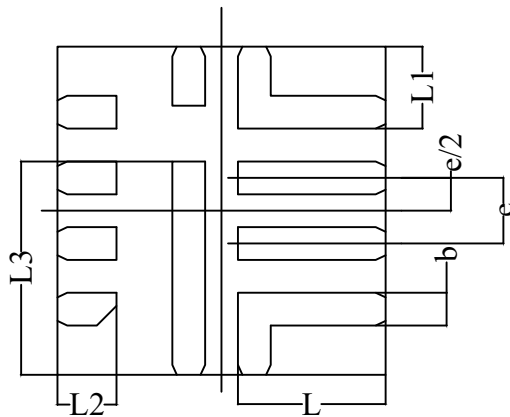


TOP VIEW



SIDE VIEW

	SYMBOL	MIN	NOM	MAX
TOTAL THICKNESS	A	0.5	0.55	0.6
STAND OFF	A1	0	0.02	0.05
MOLD THICKNESS	A2	---	0.4	---
L/F THICKNESS	A3	0.152 REF		
LEAD WIDTH	b	0.2	0.25	0.3
BODY SIZE	X	D		
	Y	E		
LEAD PITCH	e	0.5 BSC		
LEAD LENGTH	L	1.075	1.125	1.175
	L1	0.575	0.625	0.675
	L2	0.40	0.45	0.50
	L3	1.575	1.625	1.675
PACKAGE EDGE TOLERANCE	aaa	0.1		
MOLD FLATNESS	ccc	0.1		
COPLANARITY	eee	0.05		
LEAD OFFSET	bbb	0.1		



BOTTOM VIEW

NOTES:

1. ALL DIMENSIONS ARE IN MILLIMETERS. ANGLES ARE IN DEGREES.
2. DIMENSIONING AND TOLERANCING CONFORM TO ASME Y14.5-2009
3. N IS THE TOTAL NUMBER OF TERMINALS.
4. PIN #1 ID ON TOP WILL BE LASER MARKED.
5. MATERIAL MUST BE COMPLIANT WITH MAXIM SPECIFICATION 10-0131 FOR SUBSTANCE CONTENT, MUST BE Eu ROHS COMPLIANT WITHOUT EXEMPTION AND PB-FREE.
6. ALL DIMENSIONS APPLY TO PbFREE (+) PARTS.
7. MARKING SHOWN IS FOR PKG. ORIENTATION ONLY.
8. PACKAGE CODES: F122B2F-1

-DRAWING NOT TO SCALE-

		
TITLE: PACKAGE OUTLINE 12L FC2-QFN 2.50 x 2.50 x 0.55mm		
APPROVAL	DOCUMENT CONTROL NO. 21-100331	REV. A / 1/1