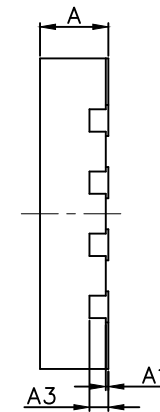
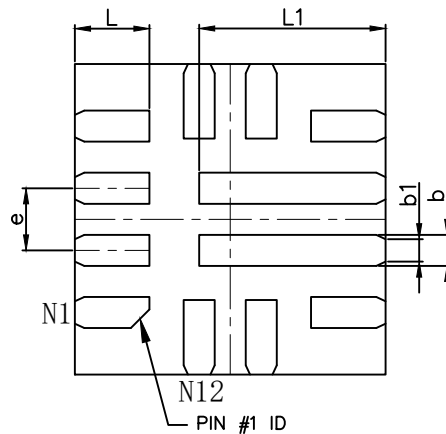


TOP VIEW



SIDE VIEW



BOTTOM VIEW

COMMON DIMENSIONS			
DIM	MIN	NOM	MAX
A	0.500	0.550	0.600
A1	0	-	0.050
A3	0.152 REF.		
b	0.200	0.250	0.300
b1	0.18 REF.		
D	2.400	2.500	2.600
E	2.400	2.500	2.600
e	0.500 BSC		
e1	NA		
L	0.500	0.600	0.700
L1	1.400	1.500	1.600
L2	NA		
N	12		
PKG CODE: F122A2F-1			

NOTES:

1. DIMENSIONING AND TOLERANCING CONFORME TO ASME Y14.5M - 2009.
2. ALL DIMENSIONS ARE IN MILLIMETERS.
3. N IS THE TOTAL NUMBER OF TERMINALS.
4. DIMENSION b APPLIES TO METALLIZED TERMINAL AND IS MEASURED BETWEEN 0.15 AND 0.30mm FROM TERMINAL TIP. IF THE TERMINAL HAS THE OPTIONAL RADIUS ON THE OTHER END OF THE TERMINAL, THE DIMENSION b SHOULD NOT BE MEASURED IN THAT RADIUS AREA.
5. PIN #1 ID ON TOP WILL BE LASER MARKED.
6. BILATERAL COPLANARITY ZONE APPLIES TO THE EXPOSED HEAT SINK SLUG AS WELL AS THE TERMINALS.
7. MARKING SHOWN IS FOR PACKAGE ORIENTATION REFERENCE ONLY.
8. MATERIAL MUST BE COMPLIANT WITH MAXIM SPECIFICATION 10-0131 FOR SUBSTANCE CONTENT, MUST BE Eu ROHS COMPLIANT WITHOUT EXEMPTION AND PB-FREE.
9. ALL DIMENSIONS APPLY TO PBFREE (+) PKGCODES ONLY.

-DRAWING NOT TO SCALE-



TITLE:  
PACKAGE OUTLINE, 12L  
FC2QFN PKG, FLIP CHIP

APPROVAL	DOCUMENT CONTROL NO. 21-100198	REV. B	1/1
----------	-----------------------------------	-----------	-----