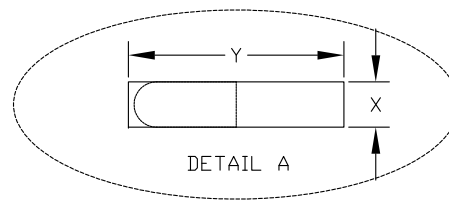
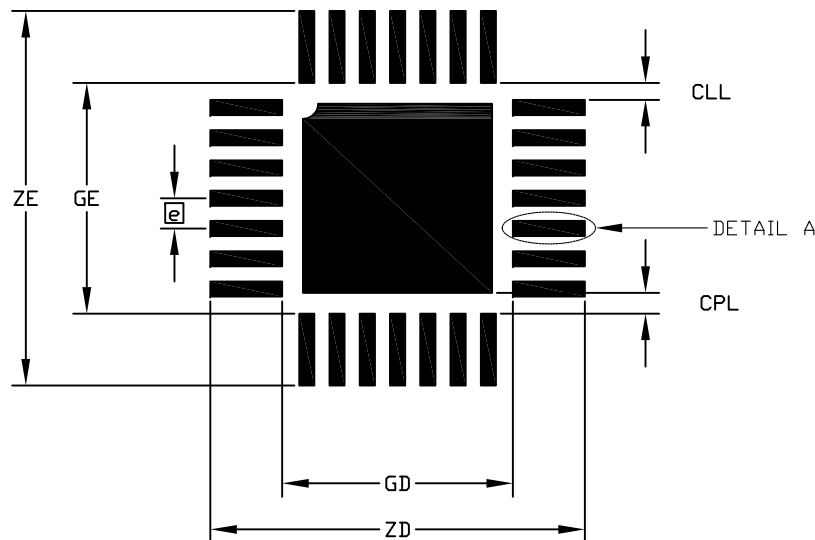


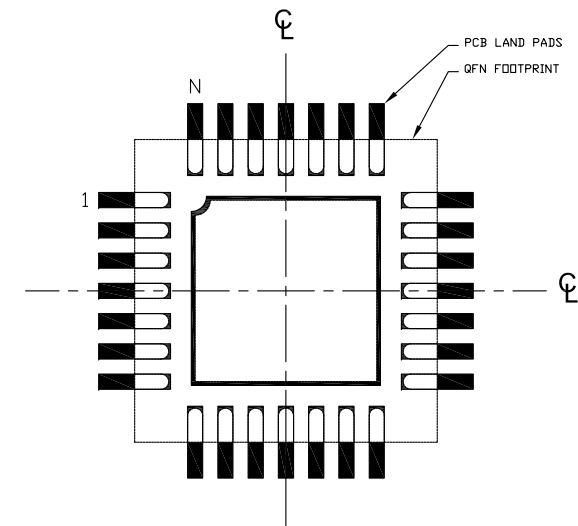
PACKAGE CODE

[K2844+1]
[K2844+1C]

RECOMMENDED LAND PATTERN



QFN OVERLAY



NOTES:

1. REFERENCE PKG. OUTLINE: 21-1013
2. LAND PATTERN COMPLIES TO: IPC7351A.
3. TOLERANCE: +/- 0.02 MM.
4. ALL DIMENSIONS APPLY TO PbFREE (+) PKG. CODE ONLY.
5. ALL DIMENSIONS IN MM.

-DRAWING NOT TO SCALE-

DIM	MILLIMETERS			INCHES		
	MIN	NOM	MAX	MIN	NOM	MAX
CLL		0.23 REF		0.009 REF		
CPL		0.28 REF		0.011 REF		
e		0.40 BSC		0.016 BSC		
GD		3.05 REF		0.120 REF		
GE		3.05 REF		0.120 REF		
N		28 PINS		28 PINS		
X		0.20 TYP		0.008 TYP		
Y		0.95 TYP		0.037 TYP		
ZD		4.95 REF		0.195 REF		
ZE		4.95 REF		0.195 REF		



This document (including dimensions, notes & specs) is a recommendation based on typical circuit board manufacturing parameters. Since land pattern design depends on many factors unknown to Maxim (eg. user's board manufacturing specs), user must determine suitability for use. This document is subject to change without notice. Contact technical support at <http://www.maximintegrated.com/support> for further questions.

TITLE:
PACKAGE LAND PATTERN,
[K2844] SAWN QFN 4x4x09.90mm

APPROVAL	DOCUMENT CONTROL NO. 90-0517	REV. A	1/1
----------	---------------------------------	-----------	-----