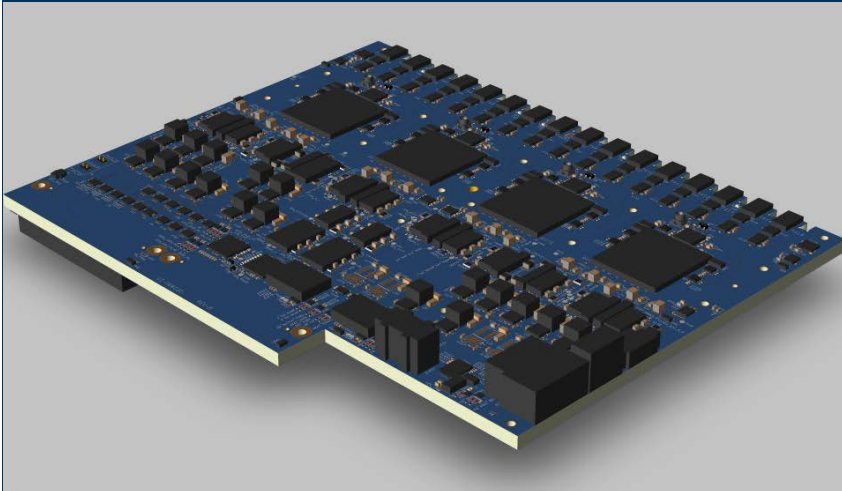


Quad Apollo MxFE™ (ADXBAND16EBZ)

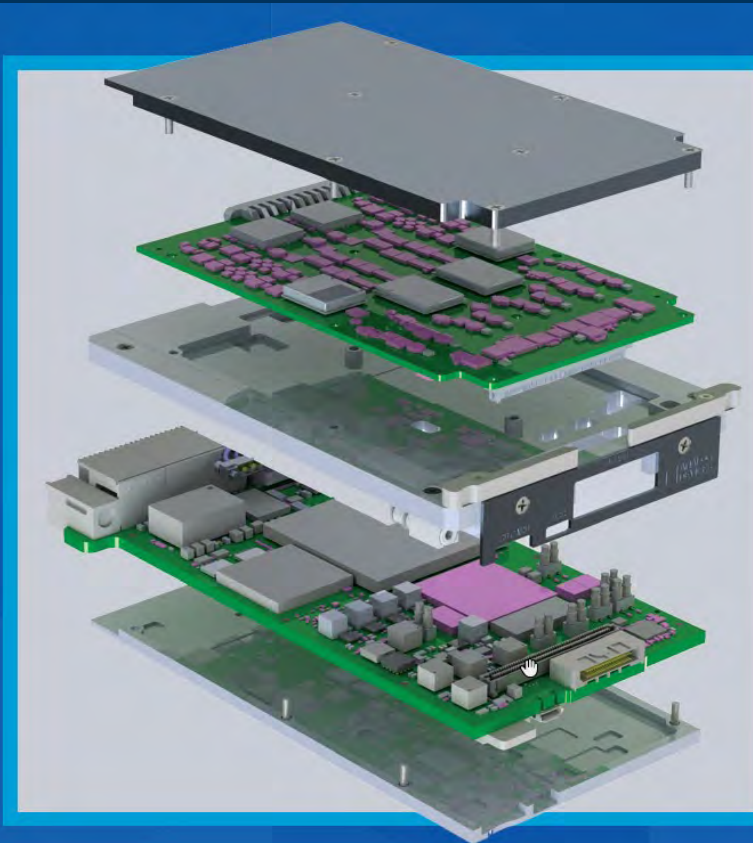
- 16 Transmit, 16 Receive
- Direct X-Band Sampling
- 12 GHz Lattice Spacing
- 7 Inch x 8.5 Inch Footprint
- Multi-Chip Synchronization
- Open-Source Software Stack

16T16R Prototyping Platform



ADSY1100 3UVPX COTS Module

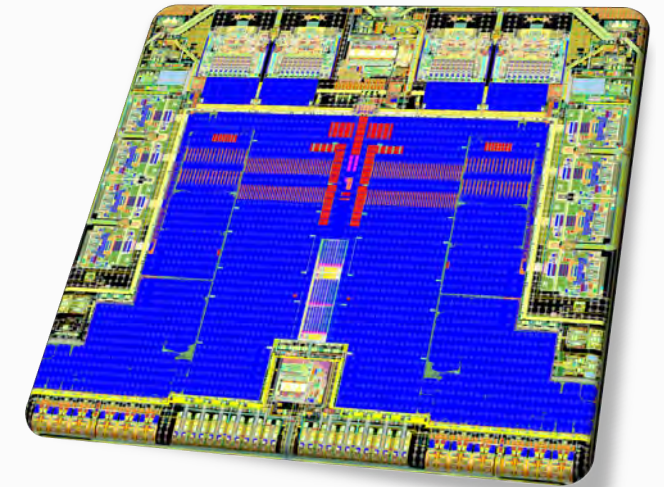
- Apollo MxFE™ + FPGA + RF
- 4x 20GSPS ADCs
- 4x 28GSPS DACs
- Hardened DSP FFT Sniffer
- Fast-Frequency Hopping
- Low-Latency Loopback



Apollo MxFE™



Wideband Direct RF Sampling
Software-Defined MxFE



20+ GSPS
ADCs & DACs

70+ dB
DYNAMIC RANGE

2.8B+
TRANSISTORS

Up to 18GHz
RF BANDWIDTH

Up to 10 GHz
INSTANTANEOUS BW

- COLOR LEGEND**
- Both variants
 - AD9088 only
 - AD9084 only
 - SW5 (AD9084 full SW option pkg only)
- SYMBOL LEGEND**
- Dig Diff Pin Intf
 - Bidirectional
 - Quadrature
 - GPIO option
 - Control Bit option
 - Broadcast / Split capability

