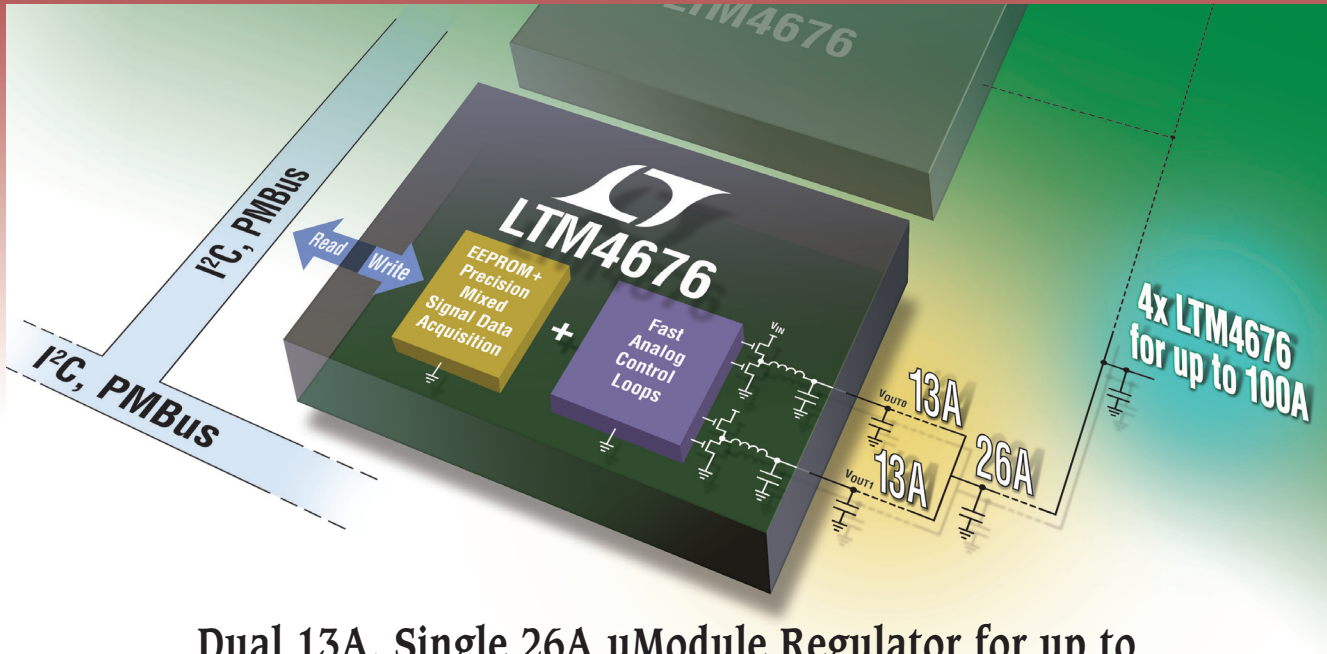


µModule Regulator with READ/WRITE Telemetry



Dual 13A, Single 26A µModule Regulator for up to 100A Output with Digital Power System Management

Take control of your power. Digital control and monitoring of system power with the LTM[®]4676 (16mm x 16mm x 5.01mm BGA) eliminates PCB layout and circuit changes. This accelerates system characterization, optimization and data mining during prototyping, deployment and field operation. With the LTM4676's serial digital interface, system designers and remote operators can command and supervise system power conditions and consumption.

▼ Features

- ±1% Maximum Total DC Output Error (over Temperature)
- ±2.5% Current Read Back Accuracy at 10A (over Temperature), without Sense Resistors
- Precision 16-bit $\Delta\Sigma$ ADC

Readable Data:

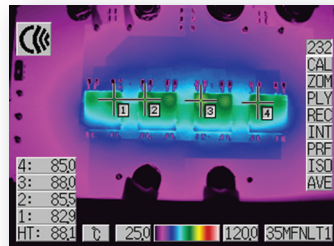
- Temperature, V_{OUT} , I_{IN} , I_{OUT}
- Peak Values, Faults and Warnings
- Fault Log Record

Writable Data:

- V_{OUT} , I_{OUT} , Sequencing and Margining
- Soft-Start/Stop Ramps

Excellent Current Sharing and Thermal Balance

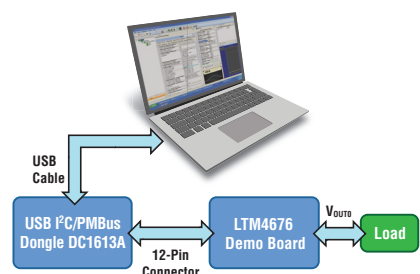
(12V_{IN}, 1.0V_{OUT}, 100A, 300 LFM)



▼ Info

www.linear.com/product/LTM4676

1-800-4-LINEAR



LT, LT, LTC, LTM, Linear Technology, the Linear logo and µModule are registered trademarks of Linear Technology Corporation. All other trademarks are the property of their respective owners.

