

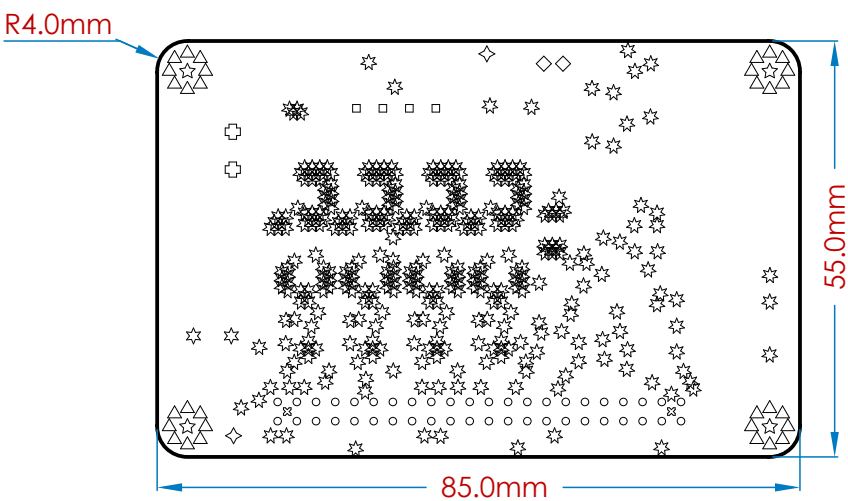
Layer Stack Legend

Material	Layer	Thickness	Gerber
	Top Paste		GTP
	Top Overlay		GTO
Surface Material	Top Soldermask	0.010mm	GTS
Copper	Top Layer	0.035mm	GTL
Prepreg		0.360mm	
Copper	Mid1	0.036mm	G1
Core		0.710mm	
Copper	Mid2	0.036mm	G2
Prepreg		0.360mm	
Copper	Bottom Layer	0.035mm	GBL
Surface Material	Bottom Soldermask	0.010mm	GBS
	Bottom Overlay		GBO
	Bottom Paste		GBP
Total thickness: 1.592mm			

Notes:

1. Use current revision of all standards.
2. Board is to be manufactured in accordance to IPC-6012 Class 2.
3. Laminate (core) and prepreg to be in accordance with IPC-4101/126
4. Board finish shall be ENIG
5. Soldermask colour shall be WHITE
6. Silkscreen colour shall be BLACK
7. All hole dimensions apply after plating
8. All copper dimensions apply after plating

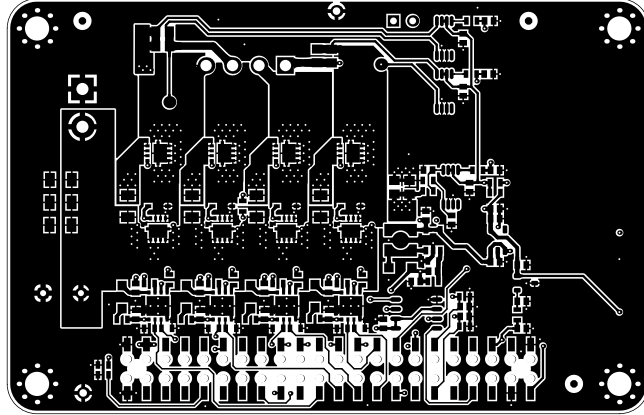
Drill Drawing View (Scale 1:1)



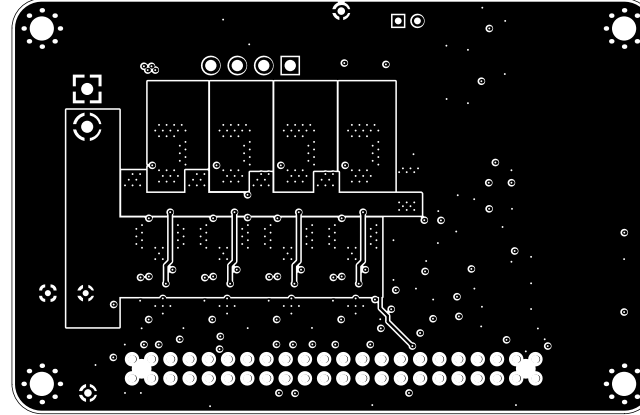
Drill Table

Symbol	Count	Hole Size	Plated	Via / Pad	Hole Tolerance
☆	379	0.25	Plated	Via	None
△	32	0.60	Plated	Via	None
☆	2	0.80	Plated	Pad	None
◇	2	0.90	Plated	Pad	None
◇	2	1.00	Plated	Pad	None
○	44	1.10	Non-Plated	Pad	None
□	4	1.50	Plated	Pad	None
⊕	2	1.60	Plated	Pad	None
⊗	2	1.80	Non-Plated	Pad	None
☆	4	3.20	Plated	Pad	None
473 Total					

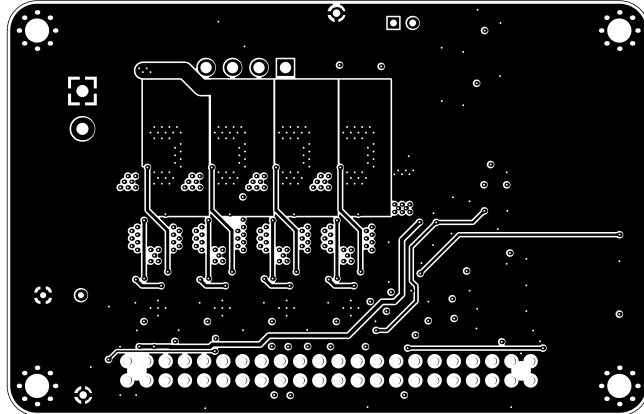
Top Layer (Scale 1:1)



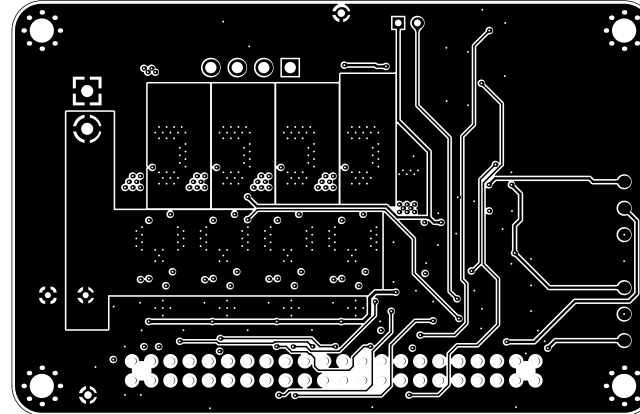
Mid1 (Scale 1:1)




Mid2 (Scale 1:1)



Bottom Layer (Scale 1:1)

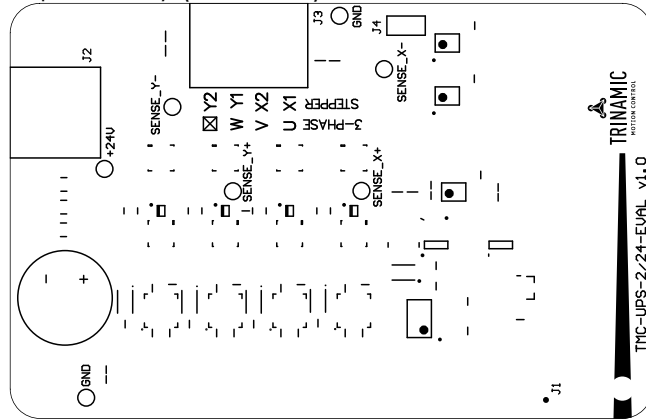


Title			Fabrication Drawing		 TRINAMIC MOTION CONTROL	Waterloohain 5 22769 Hamburg Germany tmc_info@trinamic.com
Size	Revision	Project				
A4	V1.1	UPS 2A/24V EVAL				
Date	19.10.2017 10:25		Sheet 2 of 4			
File	UPS 2A EVAL V11-F.PCBDwf					

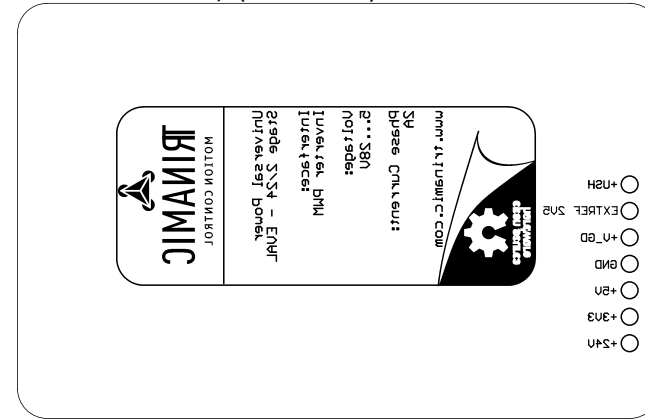


Waterloohain 5
22769 Hamburg
Germany
tmc_info@trinamic.com

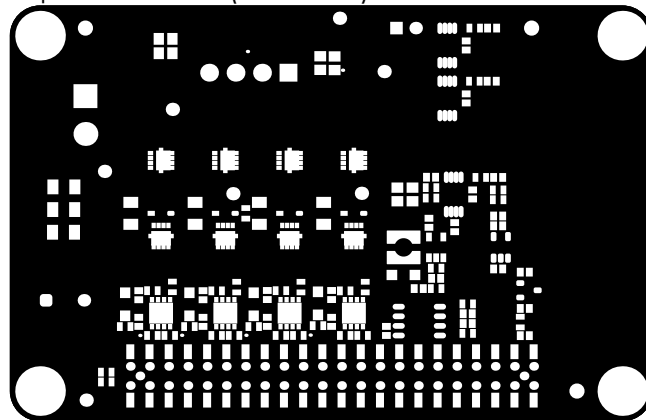
Top Overlay (Scale 1:1)



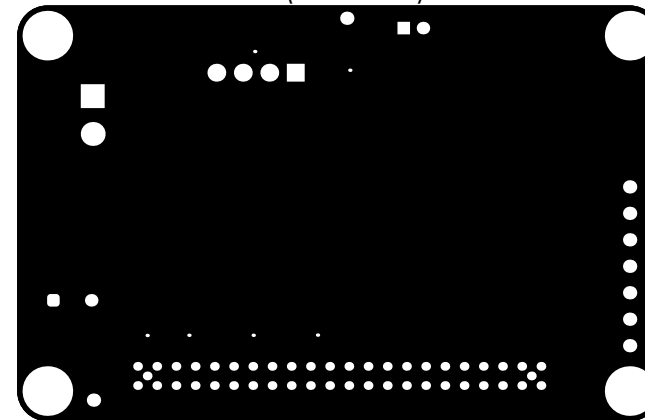
Bottom Overlay (Scale 1:1)



Top Soldermask (Scale 1:1)



Bottom Soldermask (Scale 1:1)



A

B

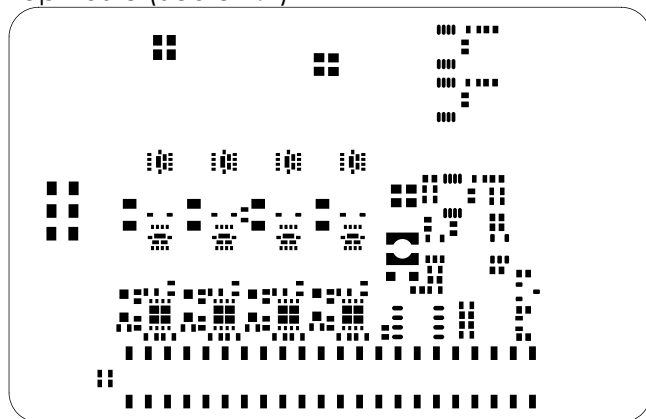
C

D

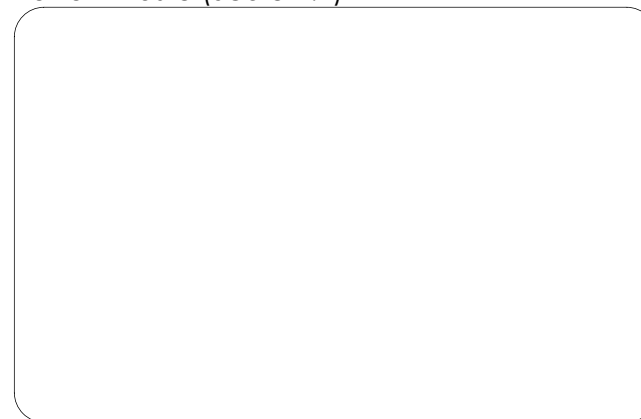
1

1

Top Paste (Scale 1:1)



Bottom Paste (Scale 1:1)



2


2

3

3

4

4

Title			Fabrication Drawing			 TRINAMIC MOTION CONTROL	Waterloohain 5 22769 Hamburg Germany tmc_info@trinamic.com	
Size	Revision	Project	UPS 2A/24V EVAL					
A4	V1.1							
Date	19.10.2017 10:25		Sheet 4 of 4					
File	UPS_2A_EVAL_V11-F.PCBDwf							

A

B

C

D