

REVISIONS			
REV	DESCRIPTION	APPROVED	DATE



This document contains information considered proprietary, and shall not be reproduced wholly or in part, nor disclosed to others without specific written permission.

HARDWARE NAME:MAX5869_EVKIT_A

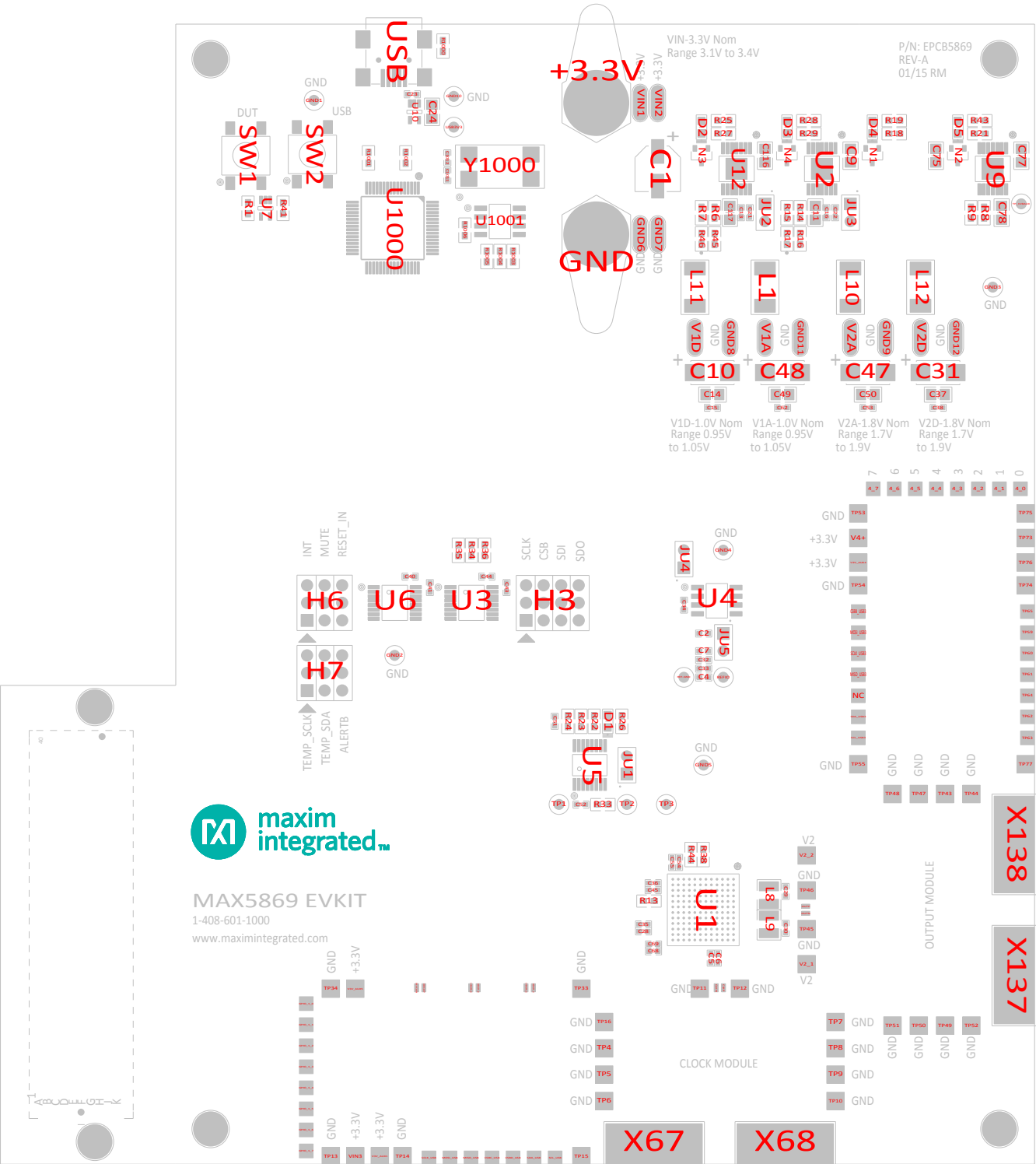
HARDWARE NUMBER:EPCB5869

ENGINEER:PAUL JONES

DESIGNER:ROLAND MISLANG

DATE: 1/05/2015

ODB++/GERBER:



JUMPER SETTINGS		
JUM_REF	SHUNT_REF	SHUNT_POSITION
H3	SU6	1:2
H3	SU7	4:5
H3	SU8	7:8
H3	SU9	10:11
H6	SU10	2:3
H6	SU11	5:6
H6	SU12	8:9
H7	SU13	2:3
H7	SU14	5:6
H7	SU15	8:9
JU1	SU1	PIN 1
JU2	SU2	1:2
JU3	SU3	1:2
JU4	SU4	1:2
JU5	SU5	1:2



MAX5869 EVKIT
1-408-601-1000
www.maximintegrated.com



THE INFORMATION CONTAINED IN THIS DOCUMENT IS PROPRIETARY TO MAXIM. THE INFORMATION IN THIS DOCUMENT IS NOT TO BE SHOWN, REPRODUCED, OR DISCLOSED TO ANYONE OUTSIDE OF MAXIM, WITHOUT PRIOR WRITTEN PERMISSION FROM MAXIM.

DRAWN BY:R MISLANG DATE:01/10/2015
CHECKED BY: DATE:
APPR. BY: DATE:
APPR. BY: DATE:

HARDWARE NAME: ASSEMBLY DWG. (TOP)
MAX5869_EVKIT_A
HARDWARE NUMBER:
EPCB5869

REV
A

NOT TO SCALE SHEET 1 OF 1

REVISIONS			
REV	DESCRIPTION	APPROVED	DATE



This document contains information considered proprietary, and shall not be reproduced wholly or in part, nor disclosed to others without specific written permission.

HARDWARE NAME:MAX5869_EVKIT_A

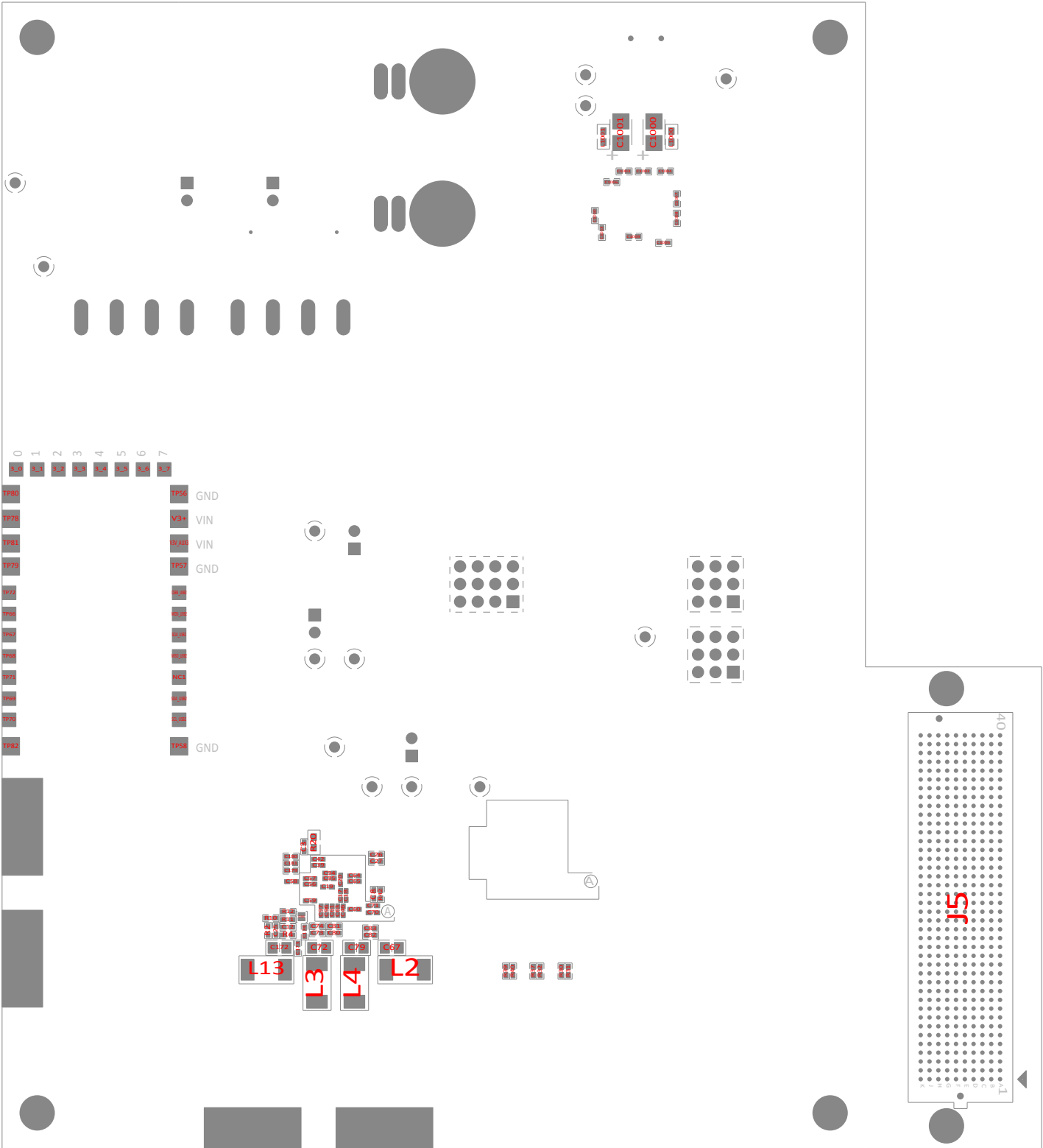
HARDWARE NUMBER:EPCB5869

ENGINEER:PAUL JONES

DESIGNER:ROLAND MISLANG

DATE: 1/05/2015

ODB++/GERBER:



<div><div></div><div>maxim integrated™</div></div>	THE INFORMATION CONTAINED IN THIS DOCUMENT IS PROPRIETARY TO MAXIM. THE INFORMATION IN THIS DOCUMENT IS NOT TO BE SHOWN, REPRODUCED, OR DISCLOSED TO ANYONE OUTSIDE OF MAXIM WITHOUT PRIOR WRITTEN PERMISSION FROM MAXIM.	
	HARDWARE NAME: ASSEMBLY DWG. (BOTTOM) MAX5869_EVKIT_A	
DRAWN BY:R MISLANG	DATE: 01/10/2015	REV A
CHECKED BY:	DATE:	
APPR. BY:	DATE:	
APPR. BY:	DATE:	
NOT TO SCALE		SHEET 1 OF 1