
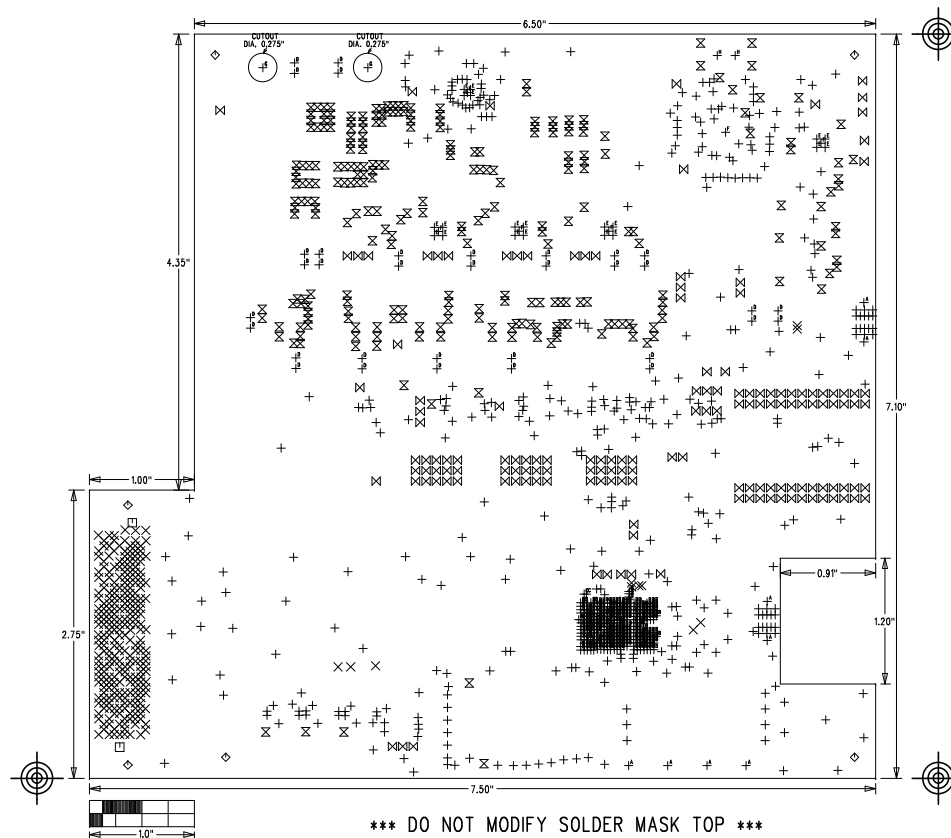


MAX5861 EVKIT	
P/N:	REV A
	
LAYER DRILL & MECHANICALS	
DATE:	ALL UNITS ARE IN 0.001"

SIZE	QTY	SYM	PLATED	TOL
15	406	+	YES	+/-3
8	273	X	YES	+/-3
50	2	□	NO	+/-3
125	6	◇	YES	+/-3
25	257	X	YES	+/-3
37	152	X	YES	+/-3
83	8	⊥ ^A	YES	+/-3
6	301	⊥ ^B	YES	+/-3
10	2	⊥ ^C	YES	+/-3
40	34	⊥ ^D	YES	+/-3
20	20	⊥ ^E	YES	+/-3
35	6	⊥ ^F	YES	+/-3
275	2	⊥ ^G	YES	+/-3
36	2	⊥ ^H	NO	+/-3



NOTES: UNLESS OTHERWISE SPECIFIED

- FABRICATE USING PROVIDED GERBER FILES PER LATEST REVISION OF IPC-A-600 UNLESS OTHERWISE NOTED.
- MATERIAL: RoHS COMPLIANT FR-408 WITH $T_g \geq 170$ AND COMPATIBLE WITH LEAD-FREE SOLDERING PROCESS AND ROGERS4350B
- BOARD DIMENSIONS: 7.10"x7.50" +/- 0.010". BOARD THICKNESS: 0.092"
- LAYERS: 10. SEE LAYER STACKUP CHART.
- MINIMUM TRACE/SPACING: 4MILS/4MILS
- COPPER CLAD FINISH: 1oz ON OUTER LAYERS
1/2oz ON GND LAYERS AND POWER LAYERS
- SURFACE MOUNT PADS: 1786.
- SOLDERMASK: GREEN LPI TAIYO PSR-4000, SMOBC. SOLDERMASK APERTURE TOLERANCE: +/-0.0005".
- LEGENDS: WHITE, DOUBLE-SIDED, NON-CONDUCTIVE EPOXY INK OR EQUIVALENT. CLIPPED ALL LEGENDS FROM EXPOSED METAL.
- PLATING: MUST BE LEAD FREE AND RoHS COMPLIANT.
- FINISH: 3-8u" IMMERSION Au OVER 100u" Ni.
- VENDOR LOGO & DATE CODE: REQUIRED IN INK ON BOTTOM SIDE ONLY. DATE CODE FORMAT MUST BE YYWW ONLY
- THRU HOLES: 0.001" MIN.
- TOLERANCES:
PLATED-THRU HOLES: +/-0.003"
PATTERN-TO-PATTERN: +/-0.005"
LEGEND TO LEGEND: +/-0.007"
- CLIP SILKSCREEN THAT TOUCHES THE PAD

	100 OHM DIFFERENTIAL TRACE SPACING			50 OHM SINGLE-ENDED TRACE WIDTH	25 OHM SINGLE-ENDED TRACE WIDTH	
LAYER 1 TOP	12	17	12	12.5		1.4MIL
LAYER 2 GND						ROGERS4350B Er=3.48 6.6MIL
LAYER 3 SIGNAL	4	4	4	5.5		PRE-PREG Er=3.8 6.5MIL
LAYER 4 GND						1.4MIL
LAYER 5 POWER						PRE-PREG Er=3.8 6.5MIL
LAYER 6 GND						1.4MIL
LAYER 7 SIGNAL	4	4	4	5.5		PRE-PREG Er=3.8 6.5MIL
LAYER 8 GND						1.4MIL
LAYER 9 SIGNAL	4	4	4	5.5		PRE-PREG Er=3.8 6.5MIL
LAYER 10 BOTTOM	12	17	12	12.5		ROGERS4350B Er=3.48 6.6MIL

ALL DIMENSION IN MIL (0.001 INCH) UNLESS OTHERWISE SPECIFIED.
N/A - NOT AVAILABLE. DO NOT ROUTE TRACES OF THIS TYPE ON THE INDICATE LAYERS.
IMPEDANCE CONTROL TOLERANCE +/- 5%