

	SILKSCREEN TOP
	SOLDER MASK TOP
LAYER 1 TOP	1 OZ. FINISHED COPPER
LAYER 2 GND PLANE	PREPREG 0.0039"
LAYER 3 GND PLANE	0.5 OZ. COPPER
LAYER 4 BOTTOM	CORE/PREPREG 0.047"
	0.5 OZ. COPPER
	PREPREG 0.0039"
	1 OZ. FINISHED COPPER
	SOLDER MASK BOTTOM
	SILKSCREEN BOTTOM

INTENTIONAL NET SHORTS		
LOCATION REF DES.	NETS SHORTED	
SH1	SENSE_KELVIN	N18113349
SH2	KGND	N18113422
SH3	KGND	N18113361
SH4	KGND	GND
SH5	AN_GND	N18113361

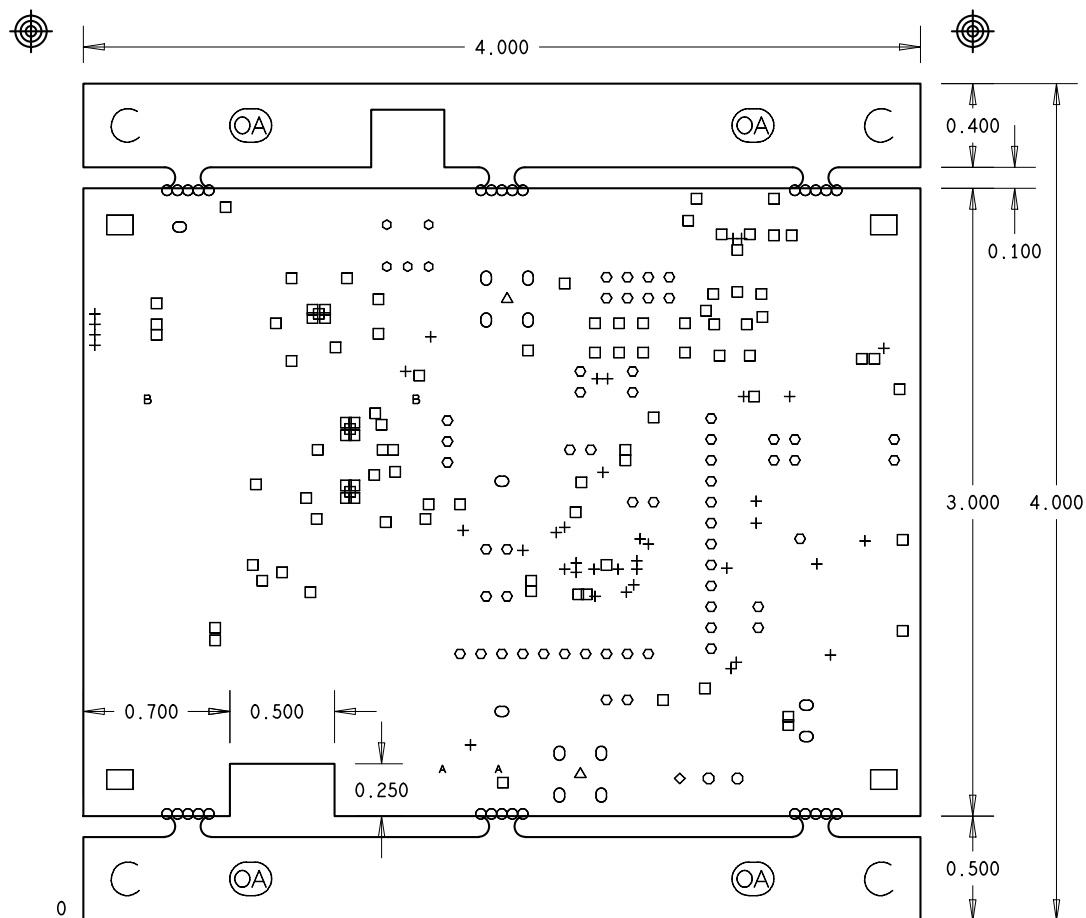
IMPEDANCE CONTROL MEASUREMENT REPORT AND COUPON REQUIRED		
LAYER NAME	COPPER WEIGHT OZ.	DIFF-PAIR CNTRL. IMP. OHM / WIDTH / GAP
LAYER 1 TOP	1 OZ.	90 / 5.9MIL / 9.1MIL
LAYER 2 GND PLANE	0.5 OZ.	---
LAYER 3 GND PLANE	0.5 OZ.	---
LAYER 4 BOTTOM	1 OZ.	90 / 5.9MIL / 9.1MIL

NOTES:

- ALL MEASUREMENTS ARE IN INCHES.
- THE PWB SHALL BE FABRICATED TO IPC-6012, CLASS 2 AND WORKMANSHIP SHALL CONFORM TO IPC-A-600, CLASS 2, CURRENT REV. DIMENSIONING AND TOLERANCE OF PRINTED WIRING BOARD SHALL BE PER IPC-D-300 (CURRENT REV).
- BOARD MATERIAL TO BE MULTI-FUNCTIONAL FR-4 EPOXY GLASS LAMINATE, AND SHALL MEET OR EXCEED MIL-P-13949, COLOR - NATURAL.
- BOARD MATERIAL AND CONSTRUCTION TO BE U.L. APPROVED AND MARKED ON THE FINISHED BOARD.
- MINIMUM COPPER WALL THICKNESS OF PLATED-THRU HOLES TO BE .001 INCHES
- OVERALL BOARD THICKNESS TO BE .062 +/- .01% AND APPLIES AFTER ALL LAMINATION AND PLATING PROCESSES, MEASURED FROM COPPER TO COPPER.
- MAX WARP AND TWIST TO BE .01 INCHES PER INCH.
- BOARD MUST BE ELECTRICALLY TESTED USING THE SUPPLIED IPC-D -356 NETLIST.
- PLATE ALL EXPOSED AREAS WITH ELECTROLESS IMMERSION GOLD NICKEL 100 MICROINCHES THK. GOLD 2-6 MICROINCHES THK MIN. SHOULD BE ROHS COMPLIANT.
- NO TOOLING HOLES ALLOWED WITHIN BOARD OUTLINE
- NO COPPER THIEVING ALLOWED WITHIN BOARD OUTLINE


PROCESS NOTES:

- APPLY LPI SOLDERMASK, BOTH SIDES, OVER BARE COPPER (SMOBC) COLOR: GREEN
SOLDERMASK SHALL CONFORM TO IPC-SM-840, CLASS H, AND CURRENT REVISION. VIAS SHALL BE TENTED OR CLEARED BY SOLDERMASK PER ARTWORK. FABRICATION VENDOR IS ALLOWED TO ADJUST SOLDERMASK FEATURES AS NEEDED AS LONG AS SOLDERMASK DAMS ARE MAINTAINED BETWEEN ALL SMD PADS.
- SILKSCREEN BOTH SIDES USING LPI SILKSCREEN, COLOR: WHITE.
PLACE ANY VENDOR MARKINGS ASSOCIATED TO PANEL ON BOTTM SIDE OF BOARD.



DRILL CHART: TOP to BOTTOM				
ALL UNITS ARE IN MILS				
FIGURE	SIZE	TOLERANCE	PLATED	QTY
+	8.0	+3.0/-3.0	PLATED	39
□	12.0	+3.0/-3.0	PLATED	95
○	42.0	+3.0/-3.0	PLATED	56
○	45.0	+3.0/-3.0	PLATED	5
○	50.0	+3.0/-3.0	PLATED	2
◇	50.0	+3.0/-3.0	PLATED	1
△	62.0	+3.0/-3.0	PLATED	2
○	65.0	+3.0/-3.0	PLATED	5
○	67.0	+3.0/-3.0	PLATED	8
□	125.0	+3.0/-3.0	PLATED	4
○	31.0	+3.0/-3.0	NON-PLATED	30
A	35.0	+3.0/-3.0	NON-PLATED	2
B	40.0	+3.0/-3.0	NON-PLATED	2
C	160.0	+3.0/-3.0	NON-PLATED	4
⊗	200.0x160.0	+3.0/-3.0	NON-PLATED	4

ALL HOLE SIZES ARE FINISHED HOLE SIZES

	
BOARD NAME: MAX32662 EV KIT	
P/N: PCB-00237-B-0	DATE: 07-21-2022
LAYER: DRILL TEMPLATE	