



This document contains information considered proprietary, and shall not be reproduced wholly or in part, nor disclosed to others without specific written permission.

HARDWARE NAME: MAX17643\_DUAL\_EVKIT\_A

HARDWARE NUMBER:

ENGINEER:

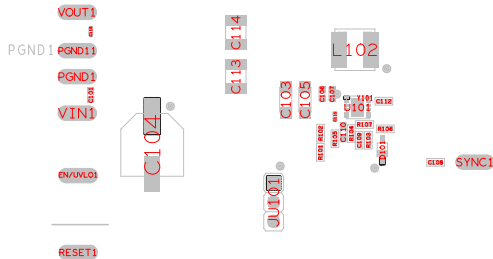
DESIGNER:

DATE: 12/3/2020

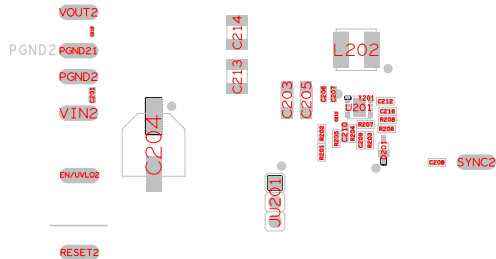
ODB++/GERBER: ASSEMBLY\_TOP

## MAX17643EVKIT

### 3.3V APPLICATION CIRCUIT



### 5V APPLICATION CIRCUIT



SCAN FOR INFO

### JUMPER SETTINGS

JUM_REF	SHUNT_REF	SHUNT_POSITION
JU101	SU101	1:2
JU201	SU201	1:2