
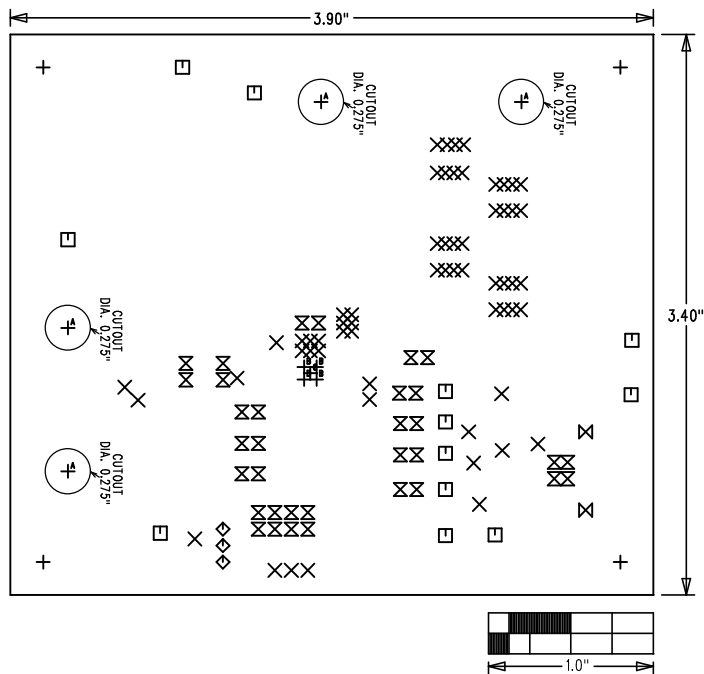


MAX17561 EVKIT	
	REV B
 maxim integrated™	
LAYER	DRILL & MECHANICALS
DATE:	ALL UNITS ARE IN 0.001"



SIZE	QTY	SYM	PLATED	TOL
125	4	⊕	YES	+/-3
25	60	⊗	YES	+/-3
67	12	□	YES	+/-3
27.56	3	◇	YES	+/-3
37	34	⊗	YES	+/-3
100	2	⊗	YES	+/-3
275	4	⊕ ^A	YES	+/-3
20	4	⊕ ^B	YES	+/-3
35	1	⊕ ^C	YES	+/-3

NOTES: UNLESS OTHERWISE SPECIFIED

- FABRICATE USING PROVIDED GERBER FILES PER LATEST REVISION OF IPC-A-600 UNLESS OTHERWISE NOTED.
- MATERIAL: RoHS COMPLIANT FR-408 OR SIMILAR LAMINATE MATERIAL WITH $T_g \geq 170$ AND COMPATIBLE WITH LEAD-FREE SOLDERING PROCESS.
- BOARD DIMENSIONS: 3.90"x3.40" +/- 0.010".
BOARD THICKNESS: 0.062"
- LAYERS: 2
- MINIMUM TRACE/SPACING: 12 MILS/8MILS.
- COPPER CLAD FINISH: 1oz MINIMUM ON ALL LAYERS.
- SURFACE MOUNT PADS: 77.
- SOLDERMASK: GREEN LPI SMOBC.
- LEGENDS: WHITE, SINGLE-SIDED, NON-CONDUCTIVE EPOXY INK OR EQUIVALENT.
CLIPPED ALL LEGENDS FROM EXPOSED METAL.
- PLATING: MUST BE LEAD FREE AND RoHS COMPLIANT.
- FINISH: VENDOR SHOULD USE THE MOST ECONOMICAL LEAD FREE AND RoHS COMPLIANT PROCESS AVAILABLE OR AS SPECIFIED IN PURCHASE ORDER.
APPROVED FINISH:
HASL LEAD-FREE
IMMERSION TIN
IMMERSION GOLD
- VENDOR LOGO & DATE CODE: ALLOWED IN INK ON BOTTOM SIDE ONLY.
- THRU HOLES: 0.001" MIN.
- TOLERANCES:
PLATED-THRU HOLES: +/-0.003"
PATTERN-TO-PATTERN: +/-0.005"
LEGEND TO LEGEND: +/-0.007"
SOLDERMASK TO PATTERN: +/-0.005"