


MAX17545- 5V OUTPUT EVKIT

P/N: EPCB17545B

REV  
A

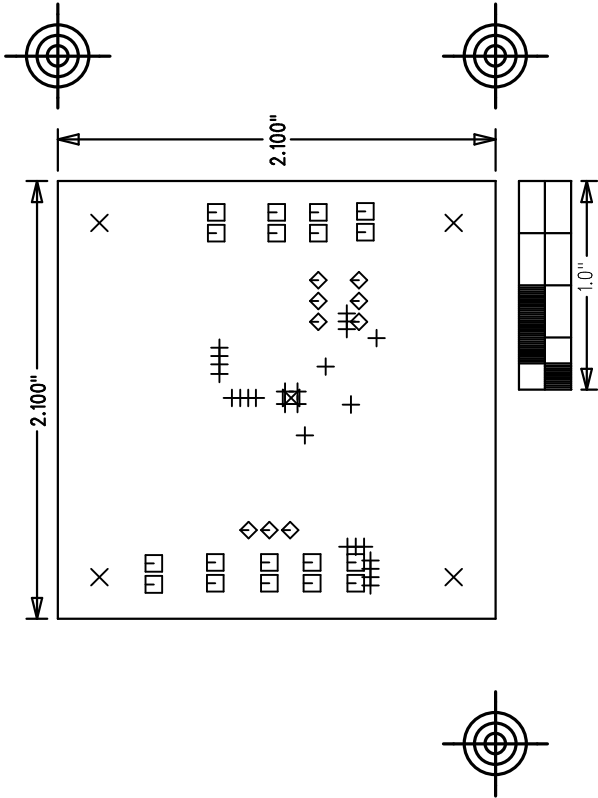
maxim  
integrated™

LAYER

DRILL & MECHANICALS

DATE:

ALL UNITS ARE IN 0.001"



SIZE	QTY	SYM	PLATED	TOL
0.015	26	+	YES	+/-0.003"
0.125	4	X	YES	+/-0.003"
0.04	18	□	YES	+/-0.003"
0.037	9	◇	YES	+/-0.003"
0.035	1	⊗	YES	+/-0.003"

NOTES: UNLESS OTHERWISE SPECIFIED

- FABRICATE USING PROVIDED GERBER FILES PER LATEST REVISION OF IPC-A-600 UNLESS OTHERWISE NOTED.
  - MATERIAL: RoHS COMPLIANT FR-408 OR SIMILAR LAMINATE MATERIAL WITH Tg>=170 AND COMPATIBLE WITH LEAD-FREE SOLDERING PROCESS.
  - BOARD DIMENSIONS: 2.10"x2.10" +/- 0.010".  
BOARD THICKNESS: 0.062"
  - LAYERS: 4, SEE LAYER STACK UP
  - MINIMUM TRACE/SPACING: 10MILS/8MILS.
  - COPPER CLAD FINISH: 1oz MINIMUM ON ALL LAYERS.
  - SURFACE MOUNT PADS: 50.
  - SOLDERMASK: GREEN LPI SMOBC.
  - LEGENDS: WHITE, SINGLE-SIDED, NON-CONDUCTIVE EPOXY INK OR EQUIVALENT. CLIPPED ALL LEGENDS FROM EXPOSED METAL.
  - PLATING: MUST BE LEAD FREE AND RoHS COMPLIANT.
  - FINISH: VENDOR SHOULD USE THE MOST ECONOMICAL LEAD FREE AND RoHS COMPLIANT PROCESS AVAILABLE OR AS SPECIFIED IN PURCHASE ORDER.
- APPROVED FINISH:  
HASL LEAD-FREE  
IMMERSION TIN  
IMMERSION GOLD
- VENDOR LOGO & DATE CODE REQUIRED IN INK ON BOTTOM SIDE ONLY. DATE CODE FORMAT MUST BE YYWW ONLY
  - THRU HOLES: 0.001" MIN.
  - TOLERANCES:  
PLATED-THRU HOLES: +/-0.003"  
PATTERN-TO-PATTERN: +/-0.005"  
LEGEND TO LEGEND: +/-0.007"  
SOLDERMASK TO PATTERN: +/-0.005"

LAYER 1	1.4MIL
LAYER 2 SGND	PRE-PREG Er=3.8 AS NEEDED
LAYER 3 SGND	CORE AS NEEDED Er=3.8
LAYER 4	PRE-PREG Er=3.8 AS NEEDED
	1.4MIL

ALL DIMENSION IN MIL (0.001 INCH) UNLESS OTHERWISE SPECIFIED.  
N/A - NOT AVAILABLE. DO NOT ROUTE TRACES OF THIS TYPE ON THE INDICATE LAYERS.