
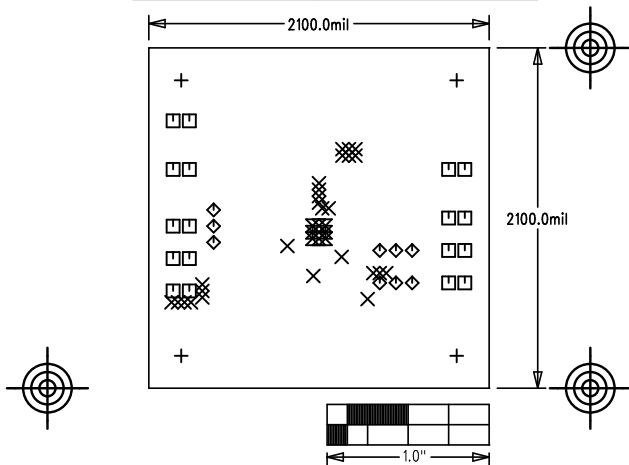


MAX17544 - 5V OUTPUT EVKIT	
P/N: EPCB17544B	REV A
 <b>maxim integrated™</b>	
LAYER DRILL & MECHANICALS	
DATE:	ALL UNITS ARE IN 0.001"



### NOTES: UNLESS OTHERWISE SPECIFIED

1. FABRICATE USING PROVIDED GERBER FILES PER LATEST REVISION OF IPC-A-600 UNLESS OTHERWISE NOTED.
2. MATERIAL: RoHS COMPLIANT FR-408 OR SIMILAR LAMINATE MATERIAL WITH  $T_g \geq 170$  AND COMPATIBLE WITH LEAD-FREE SOLDERING PROCESS.
3. BOARD DIMENSIONS: 2.10"X2.10"  $\pm 0.010$ ".  
BOARD THICKNESS: 0.062"
4. LAYERS: 4. SEE LAYER STACKUP CHART.
5. MINIMUM TRACE/SPACING: 10MILS/8MILS.
6. COPPER CLAD FINISH: 1oz MINIMUM ON ALL LAYERS.
7. SURFACE MOUNT PADS: 55.
8. SOLDERMASK: GREEN LPI SMOBC.
9. LEGENDS: WHITE. SINGLE-SIDED. NON-CONDUCTIVE EPOXY INK OR EQUIVALENT. CLIPPED ALL LEGENDS FROM EXPOSED METAL.
10. PLATING: MUST BE LEAD FREE AND RoHS COMPLIANT.
11. FINISH: VENDOR SHOULD USE THE MOST ECONOMICAL LEAD FREE AND RoHS COMPLIANT PROCESS AVAILABLE OR AS SPECIFIED IN PURCHASE ORDER.  
APPROVED FINISH:  
HASL LEAD-FREE  
IMMERSION TIN  
IMMERSION GOLD
12. VENDOR LOGO & DATE CODE REQUIRED IN INK ON BOTTOM SIDE ONLY. DATE CODE FORMAT MUST BE YYWW ONLY.
13. THRU HOLES: 0.001" MIN.
14. TOLERANCES:  
PLATED-THRU HOLES:  $\pm 0.003$ "  
PATTERN-TO-PATTERN:  $\pm 0.005$ "  
LEGEND TO LEGEND:  $\pm 0.007$ "  
SOLDERMASK TO PATTERN:  $\pm 0.005$ "

SIZE	QTY	SYM	PLATED	TOL
125	4	+	YES	$\pm 0.003$
15	26	X	YES	$\pm 0.003$
40	18	□	YES	$\pm 0.003$
37	9	◇	YES	$\pm 0.003$
20	8	⊗	YES	$\pm 0.003$
35	1	⊗	YES	$\pm 0.003$

LAYER 1 TOP	1.4MIL
PRE-PREG AS NEEDED $E_r=3.8$	
LAYER 2	1.4MIL
CORE AS NEEDED $E_r=3.8$	
LAYER 3	1.4MIL
PRE-PREG AS NEEDED $E_r=3.8$	
LAYER 4 BOTTOM	1.4MIL

ALL DIMENSION IN MIL (0.001 INCH) UNLESS OTHERWISE SPECIFIED.